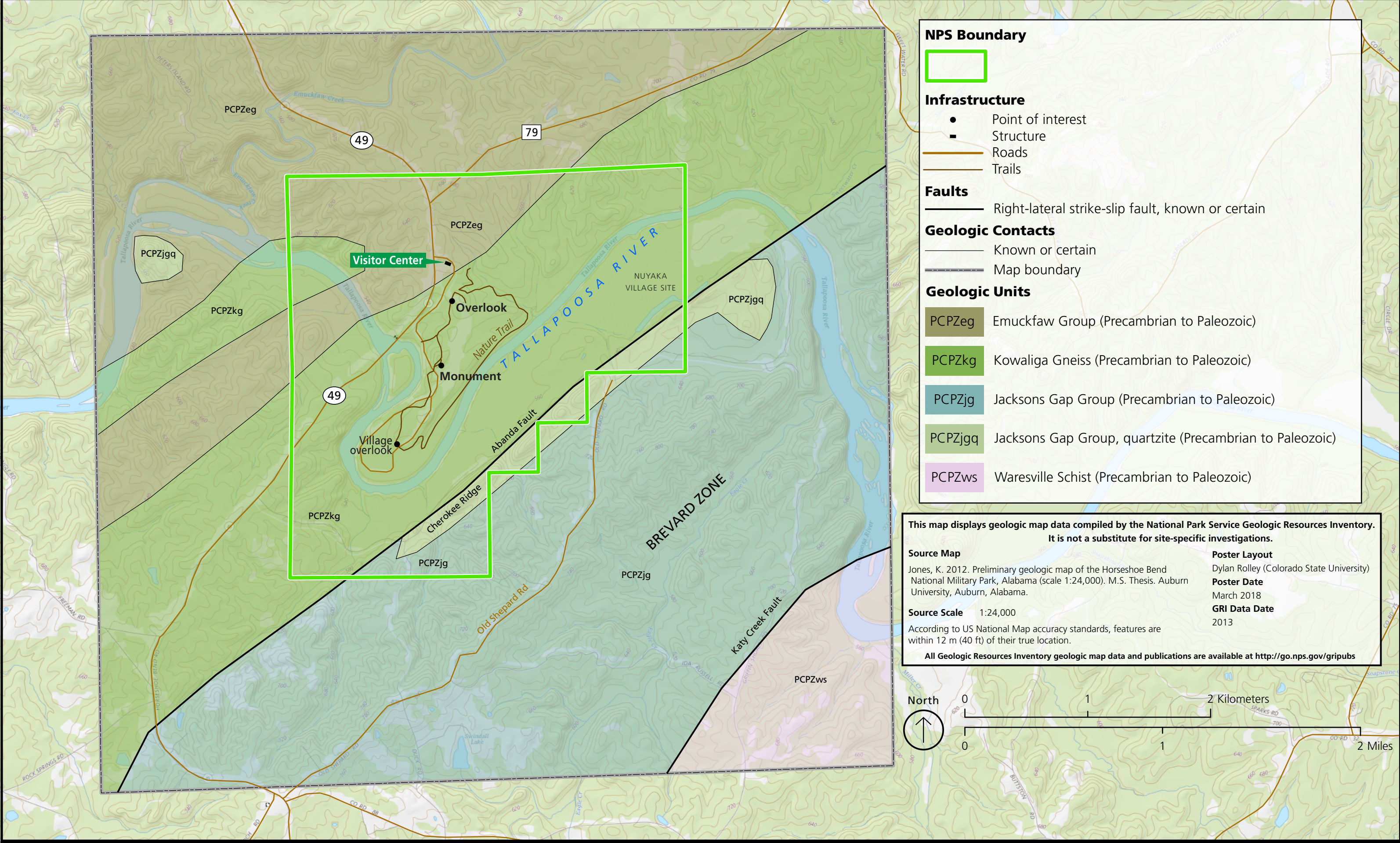


Geologic Map of Horseshoe Bend National Military Park

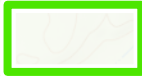
Alabama

National Park Service
U.S. Department of the Interior

Geologic Resources Inventory
Natural Resource Stewardship and Science



NPS Boundary



Infrastructure

- Point of interest
- Structure
- Roads
- Trails

Faults

- Right-lateral strike-slip fault, known or certain

Geologic Contacts

- Known or certain
- Map boundary

Geologic Units

- PCPZeg Emuckfaw Group (Precambrian to Paleozoic)
- PCPZkg Kowaliga Gneiss (Precambrian to Paleozoic)
- PCPZjg Jacksons Gap Group (Precambrian to Paleozoic)
- PCPZjgq Jacksons Gap Group, quartzite (Precambrian to Paleozoic)
- PCPZws Waresville Schist (Precambrian to Paleozoic)

This map displays geologic map data compiled by the National Park Service Geologic Resources Inventory. It is not a substitute for site-specific investigations.

Source Map

Jones, K. 2012. Preliminary geologic map of the Horseshoe Bend National Military Park, Alabama (scale 1:24,000). M.S. Thesis. Auburn University, Auburn, Alabama.

Source Scale

1:24,000

According to US National Map accuracy standards, features are within 12 m (40 ft) of their true location.

All Geologic Resources Inventory geologic map data and publications are available at <http://go.nps.gov/gripubs>

Poster Layout

Dylan Rolley (Colorado State University)

Poster Date

March 2018

GRI Data Date

2013

North

