

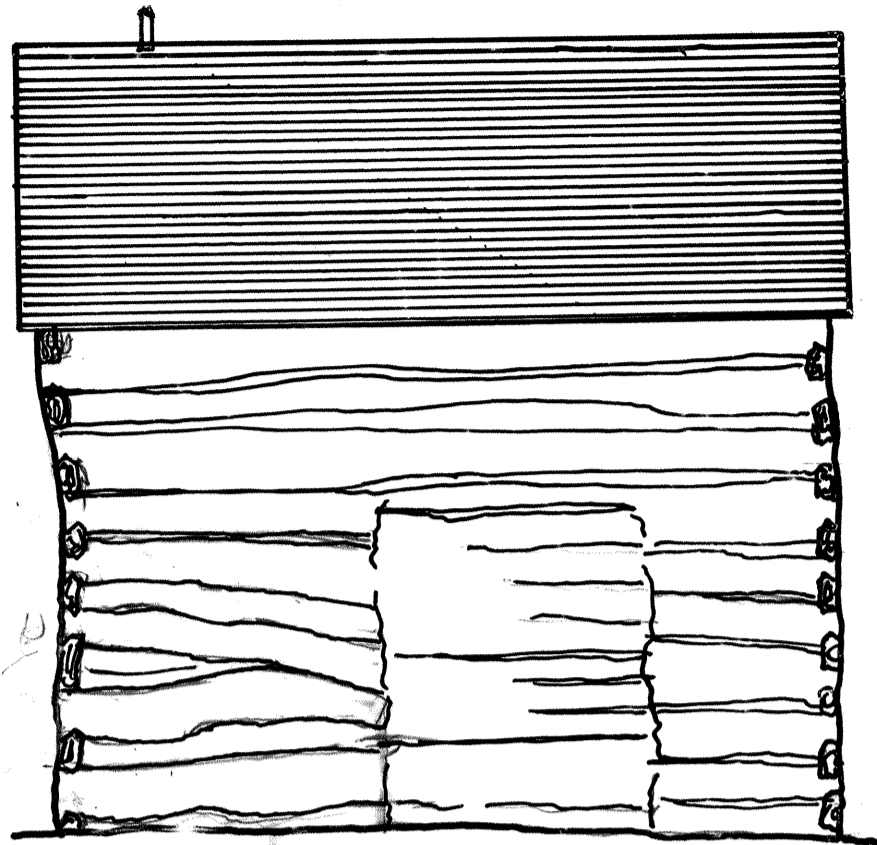
Palmer-Epard Cabin (Homestead National Monument of America)  
Homestead National Monument of America  
Beatrice  
Gage County  
Nebraska

HABS No. NE-21

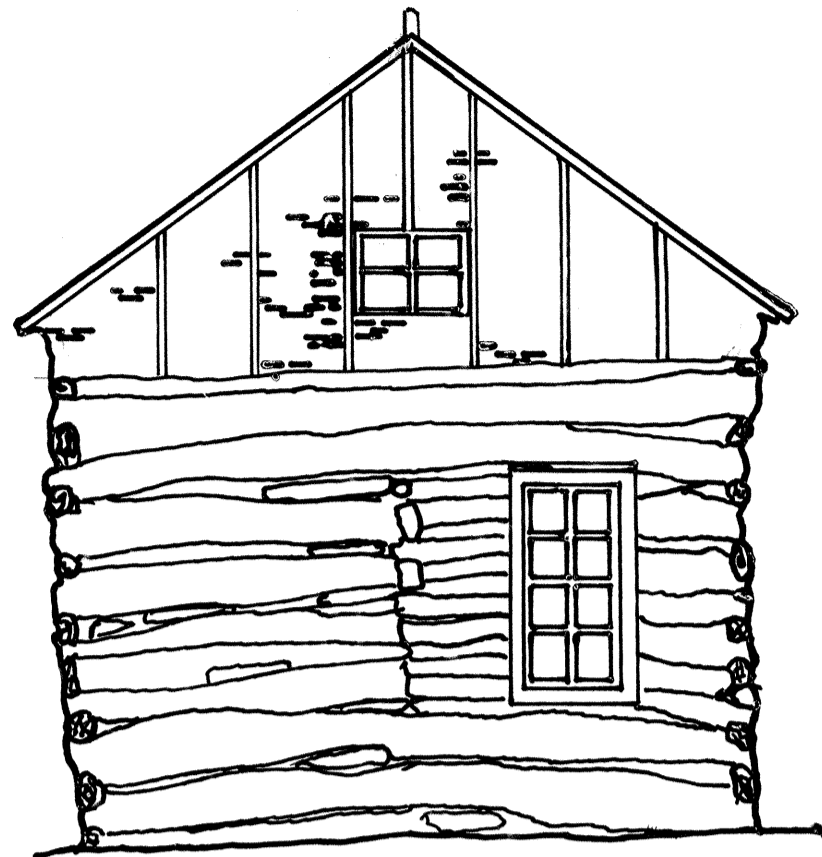
HABS  
NEB,  
34-BEATRICE,  
1B-

REDUCED COPIES OF MEASURED DRAWINGS

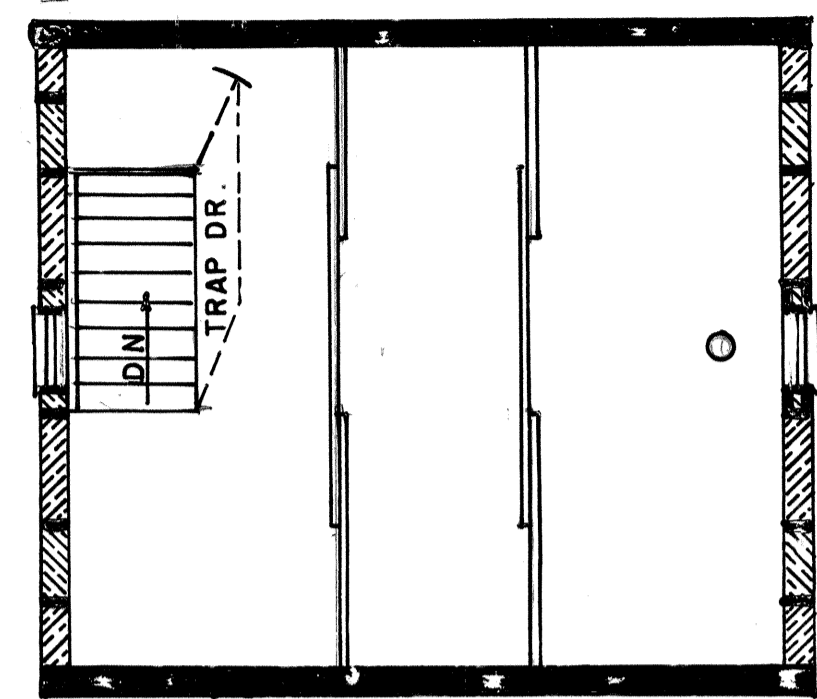
Historic American Buildings Survey  
National Park Service  
Department of the Interior  
Washington, D.C. 20240



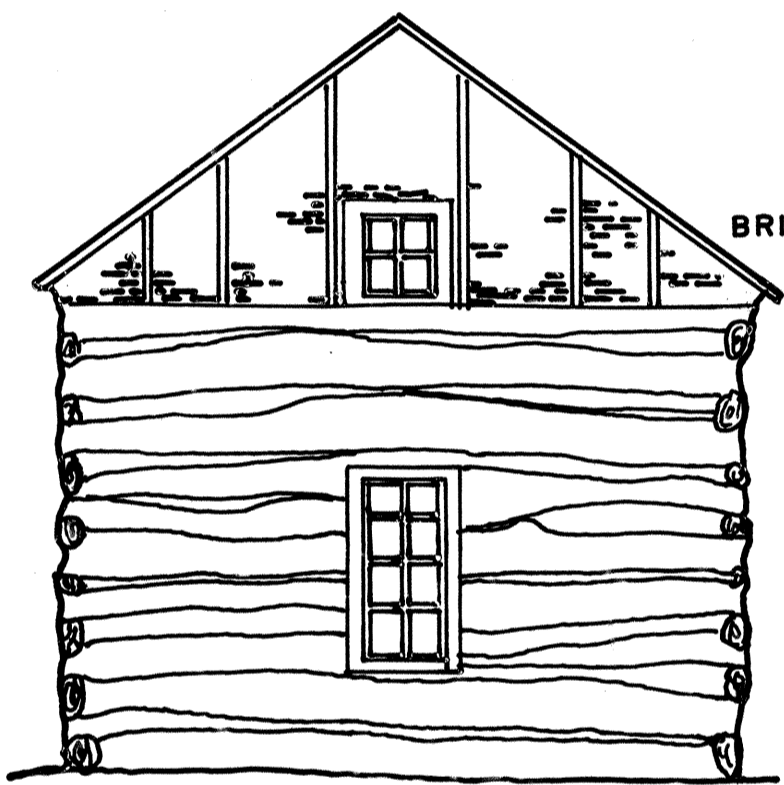
SOUTH ELEVATION



EAST ELEVATION

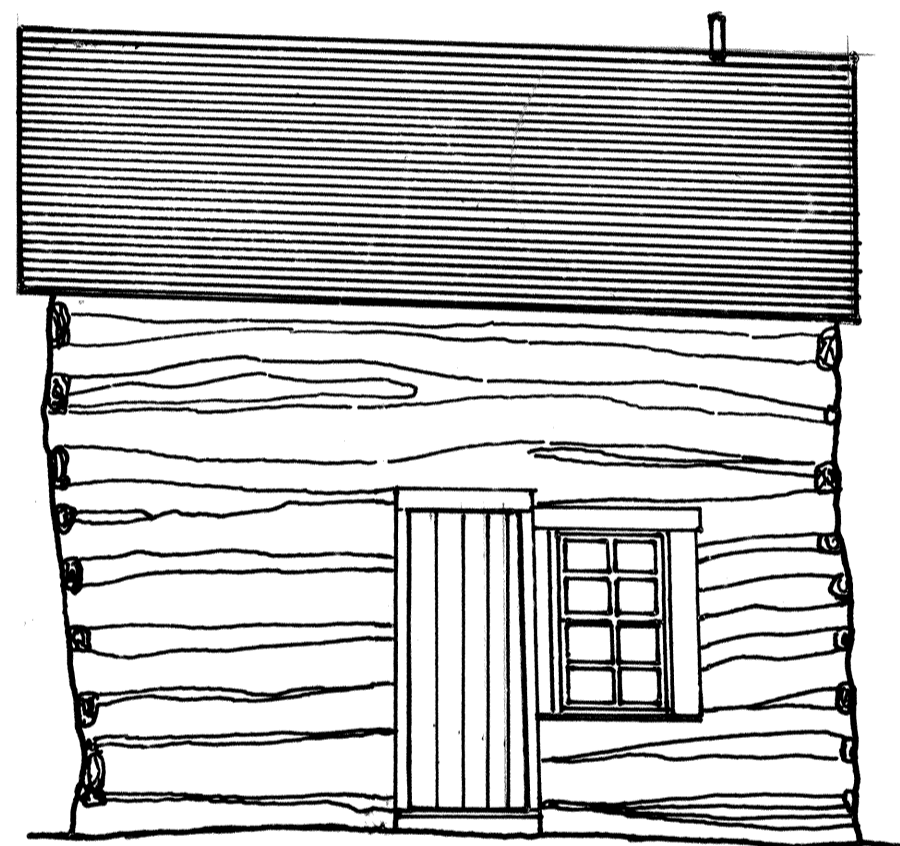


ATTIC PLAN

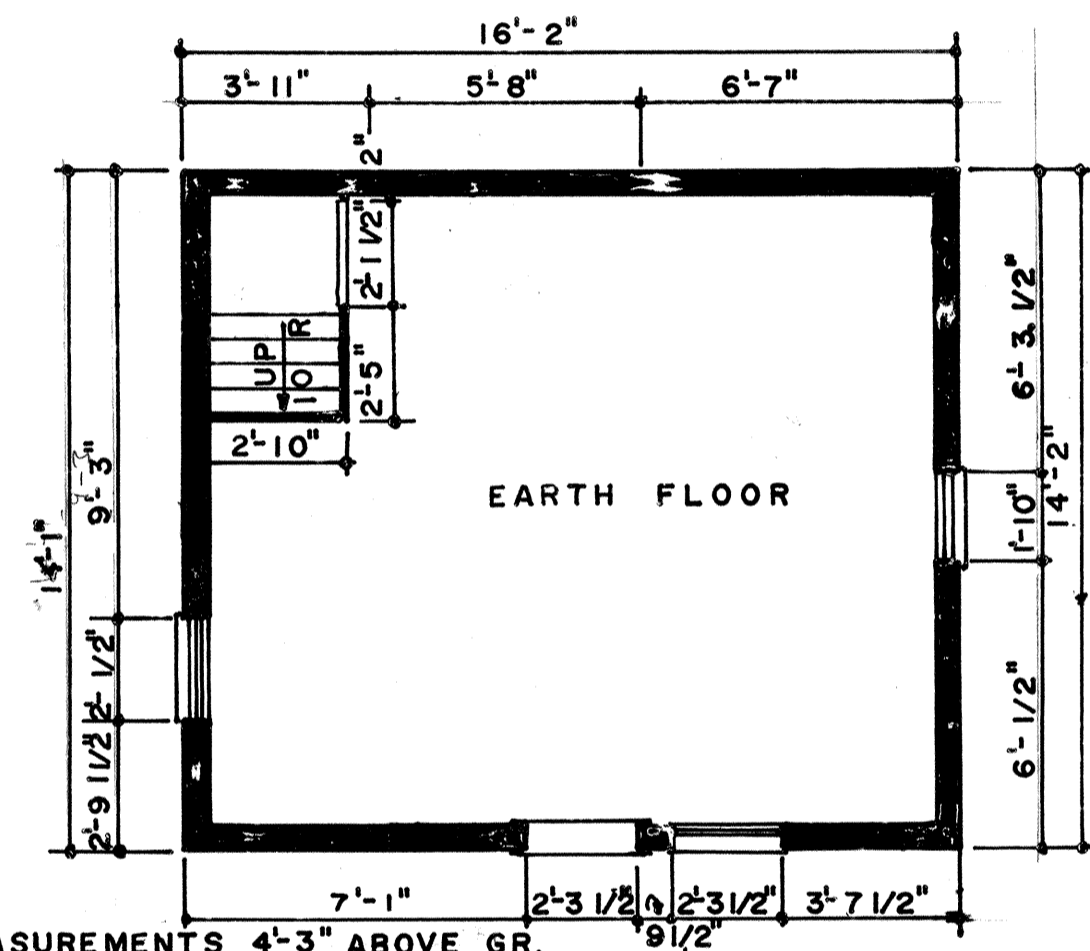


WEST ELEVATION

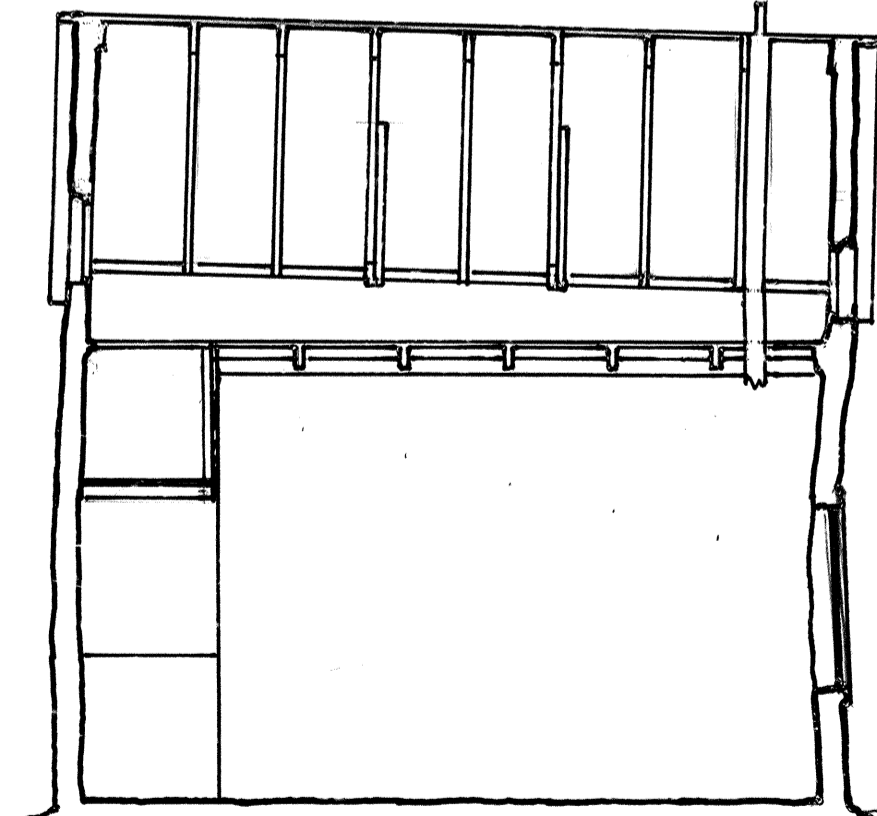
WOOD SHINGLE ROOF  
BRICK NOGGING  
OAK LOG WALLS



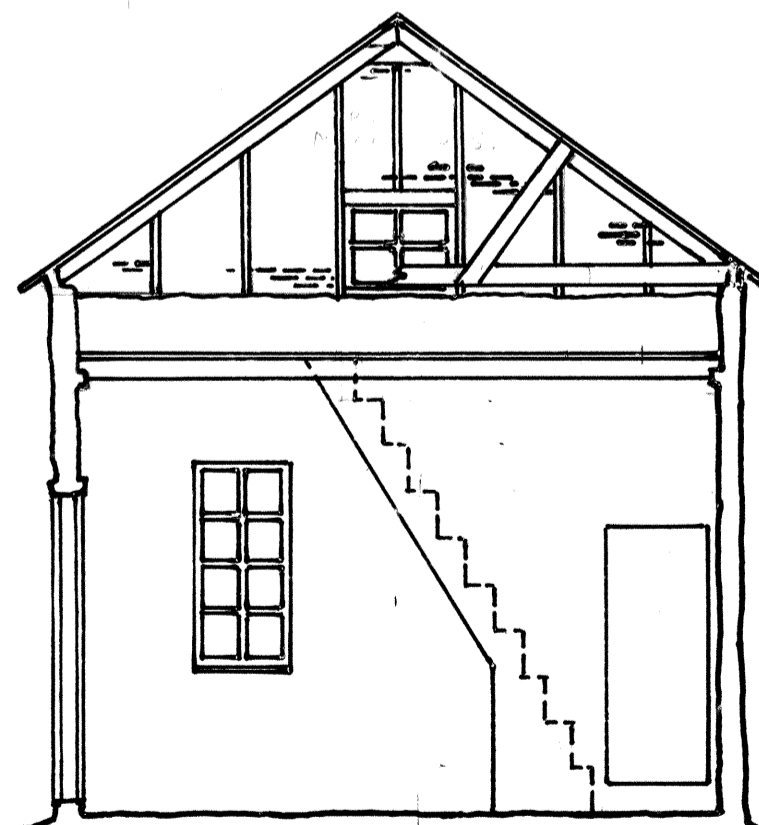
NORTH ELEVATION



FLOOR PLAN

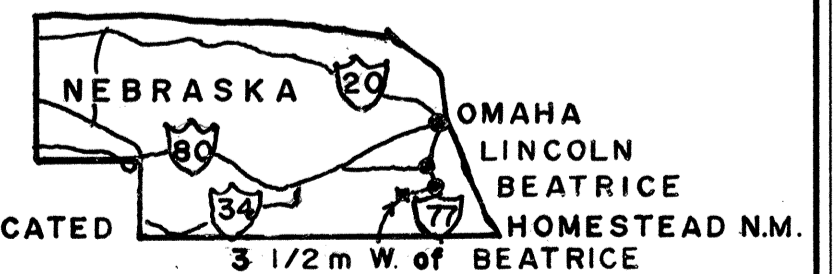
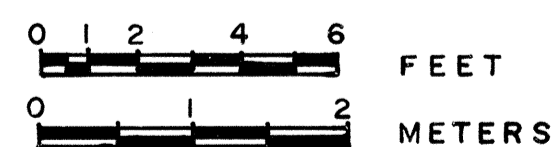


LONGITUDINAL SECTION



CROSS SECTION

THE PALMER-EPARD CABIN, BUILT IN 1867, WAS MOVED TO HOMESTEAD NATIONAL MONUMENT FROM A NEIGHBORING TOWNSHIP IN 1950. THE CONSTRUCTION AND FURNISHINGS SHOW THE PATTERN OF LIFE FOLLOWED BY HOMESTEADERS ON THE TALL-GRASS PRAIRIES, AND MAINTENANCE IS IN STRICT REGARD TO ORIGINAL APPEARANCE.  
DRAWN FROM MEASUREMENTS MADE IN OCTOBER 1967.



LOGS IN DRWGS. PHOTOGRAPHICALLY LOCATED

3 1/2 m W. of BEATRICE

DRAWN BY: POPE

DIV. OF HISTORIC ARCHITECTURE, BR. OF RESTORATIONS  
OFFICE OF ARCHEOLOGY AND HISTORIC PRESERVATION  
UNDER DIRECTION OF THE NATIONAL PARK SERVICE,  
UNITED STATES DEPARTMENT OF THE INTERIOR

NAME AND LOCATION OF STRUCTURE

**PALMER - EPARD CABIN**  
HOMESTEAD NATIONAL MONUMENT of AMERICA, BEATRICE, GAGE COUNTY, NEBRASKA

SURVEY NO.  
NEB  
21

HISTORIC AMERICAN  
BUILDINGS SURVEY  
SHEET 1 OF 1 SHEETS

LIBRARY OF CONGRESS  
INDEX NUMBER

DUE TO INSUFFICIENT INFORMATION AT THE TIME OF EDITING, THIS DRAWING MAY NOT CONFORM TO THE LATEST STANDARDS.