

Freeman School  
Homestead National Monument of America  
Beatrice  
Gage County  
Nebraska

HABS No. NE-22

HABS  
NEB,  
34-BEATV  
1A

REDUCED COPIES OF MEASURED DRAWINGS

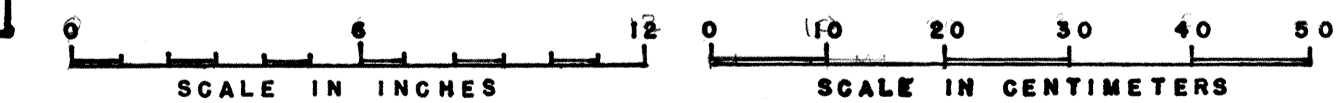
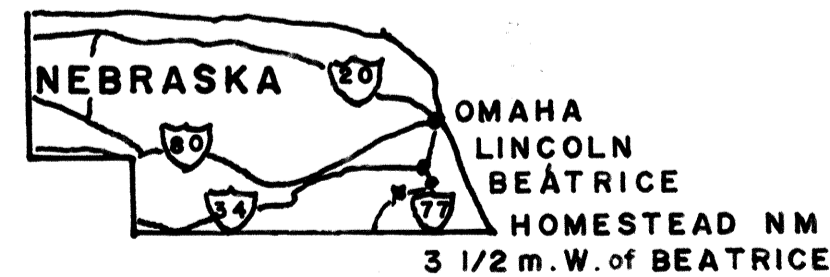
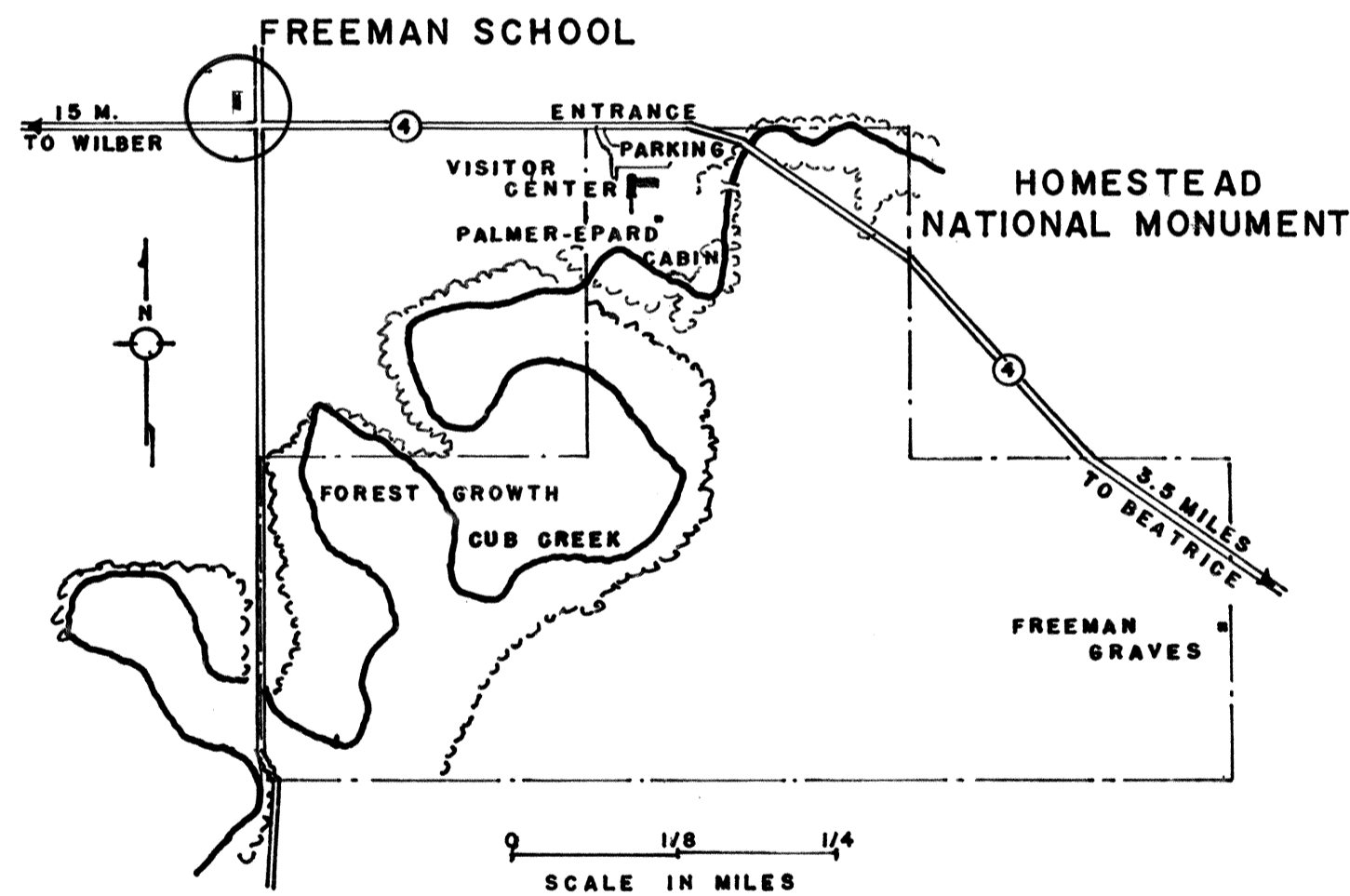
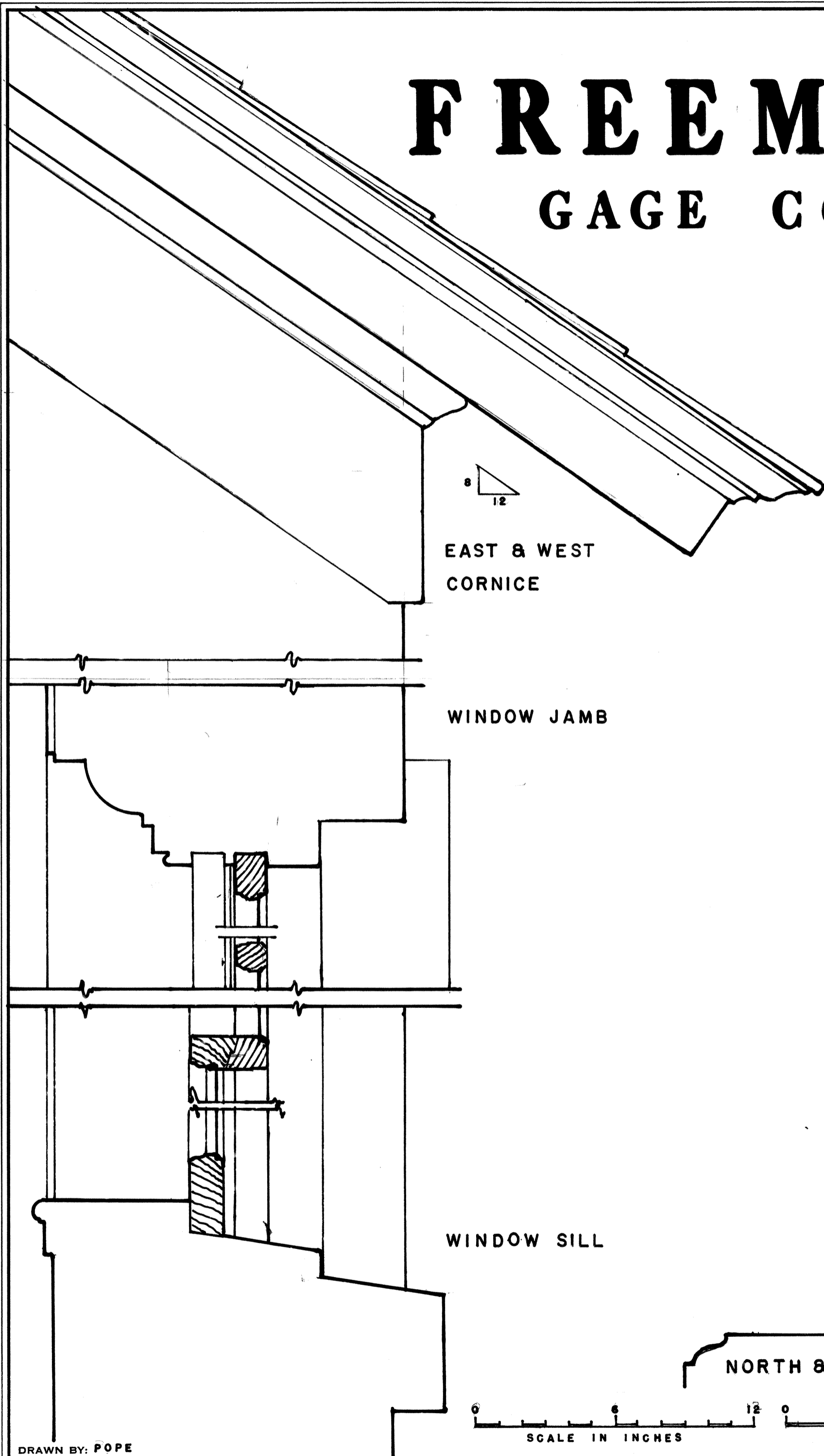
Historic American Buildings Survey  
National Park Service  
Department of the Interior  
Washington, D.C. 20240

# FREEMAN SCHOOL

## GAGE COUNTY NEBRASKA

THE FREEMAN SCHOOL WAS BUILT IN 1871 OF BRICK, SAID TO HAVE BEEN MADE ON AN ADJACENT FARM. IT IS REGARDED AS THE OLDEST CONTINUALLY OPERATED SCHOOL IN NEBRASKA (1872 - 1967), AND WAS USED OCCASIONALLY AS A COMMUNITY MEETING HALL AND AS A CHURCH. IN 1899 DANIEL FREEMAN OBJECTED TO RELIGIOUS EXERCISES IN THE SCHOOL, PURSUING HIS OBJECTION TO THE NEBRASKA SUPREME COURT, WHICH FOUND THE DISTRICT IN VIOLATION OF THE STATE CONSTITUTION.

THESE DRAWINGS WERE MADE FROM MEASUREMENTS MADE IN SEPTEMBER 1967 AND DRAWN BY THE BRANCH OF RESTORATIONS, DIV. OF HISTORIC ARCHITECTURE.



DUE TO INSUFFICIENT INFORMATION AT THE TIME OF EDITING, THIS MATERIAL MAY NOT CONFORM TO HABS OR HAER STANDARDS.

DRAWN BY: POPE

DIV. OF HISTORIC ARCHITECTURE BR. OF RESTORATIONS  
OFFICE OF ARCHEOLOGY AND HISTORIC PRESERVATION  
UNDER DIRECTION OF THE NATIONAL PARK SERVICE,  
UNITED STATES DEPARTMENT OF THE INTERIOR

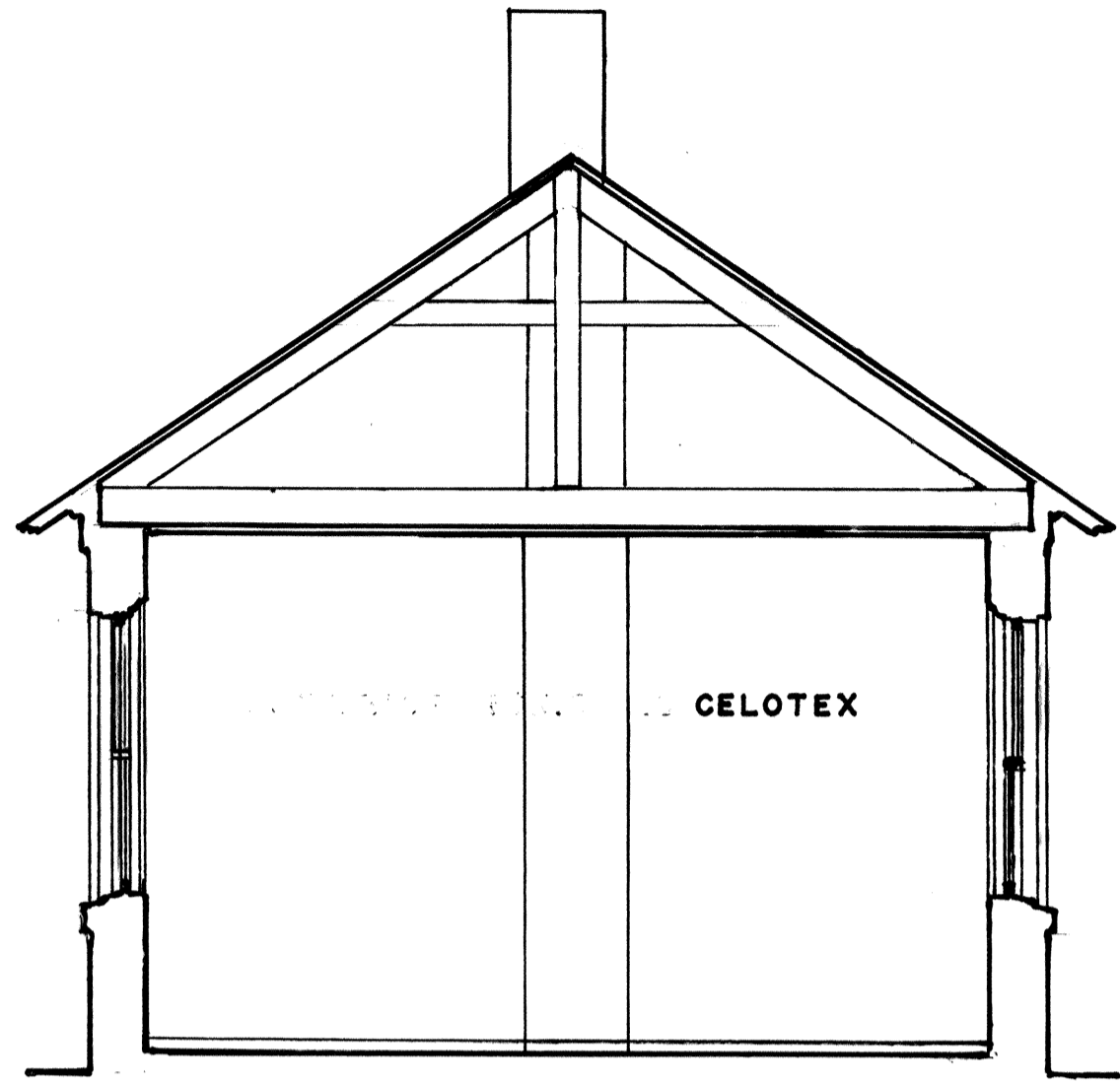
NAME AND LOCATION OF STRUCTURE

**FREEMAN SCHOOL**  
HOMESTEAD NATIONAL MONUMENT of AMERICA, BEATRICE, GAGE COUNTY, NEBRASKA

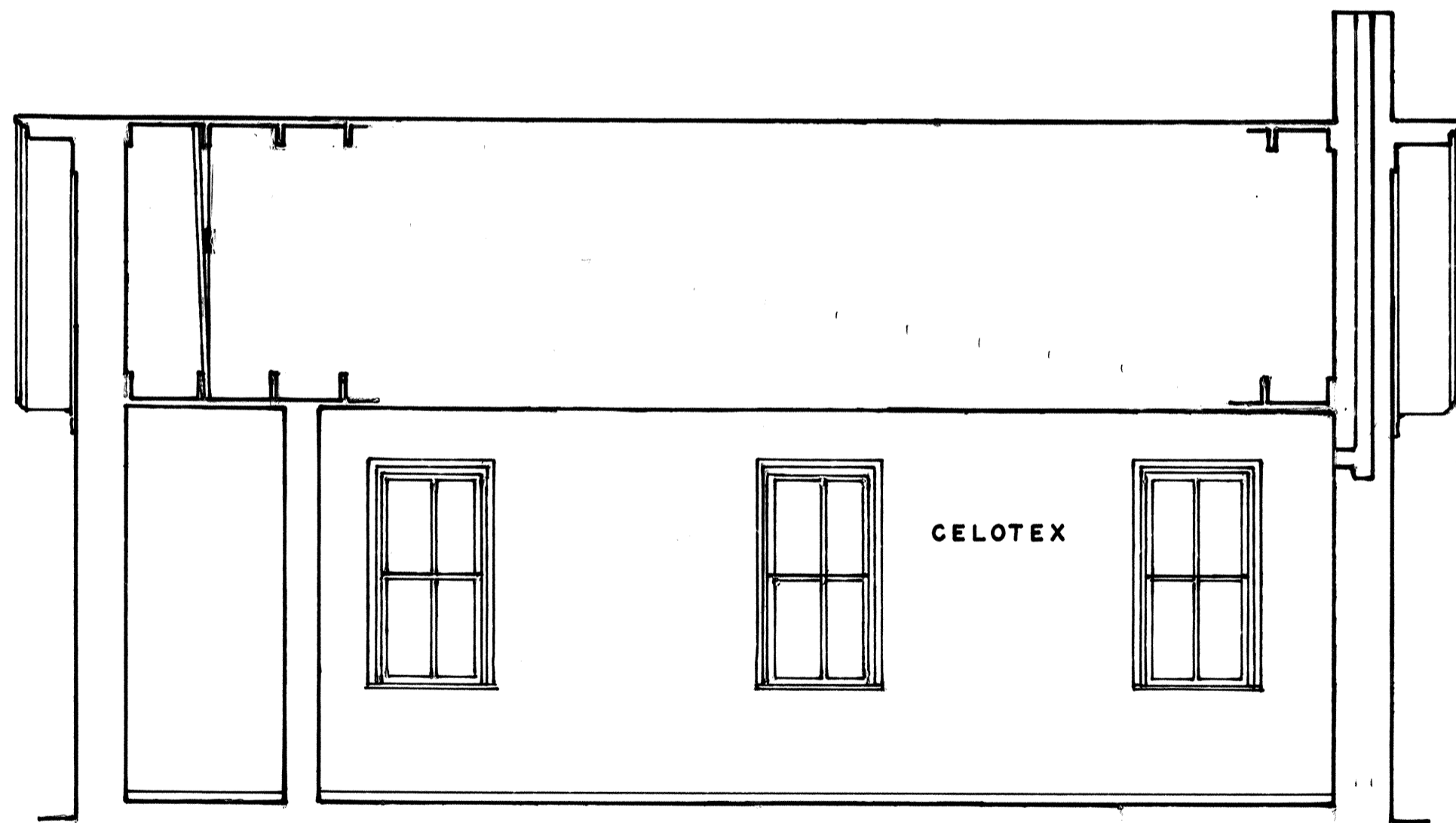
SURVEY NO.  
NEB  
22

HISTORIC AMERICAN  
BUILDINGS SURVEY  
SHEET 1 OF 3 SHEETS

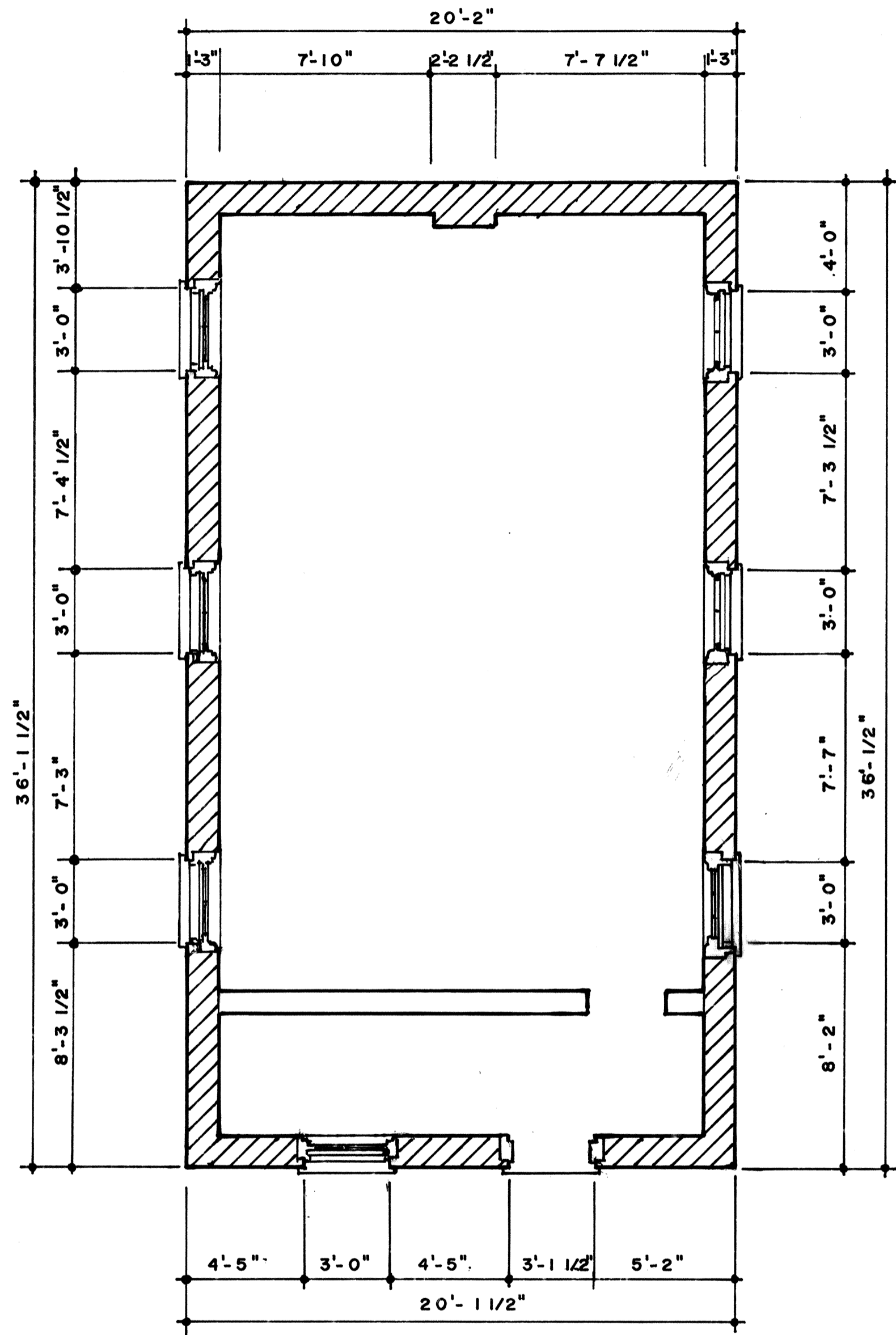
LIBRARY OF CONGRESS  
INDEX NUMBER



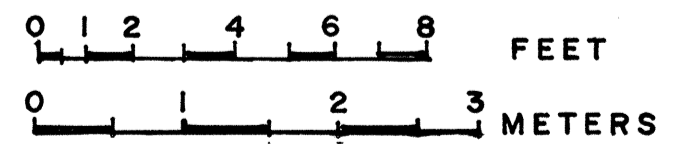
CROSS-SECTION



LONGITUDINAL SECTION



FLOOR PLAN



DUE TO INSUFFICIENT INFORMATION AT THE TIME OF EDITING, THIS MATERIAL MAY NOT CONFORM TO HABS OR HAER STANDARDS.

DRAWN BY: POPE

DIV. OF HISTORIC ARCHITECTURE, BR. OF RESTORATIONS  
OFFICE OF ARCHEOLOGY AND HISTORIC PRESERVATION  
UNDER DIRECTION OF THE NATIONAL PARK SERVICE,  
UNITED STATES DEPARTMENT OF THE INTERIOR

NAME AND LOCATION OF STRUCTURE

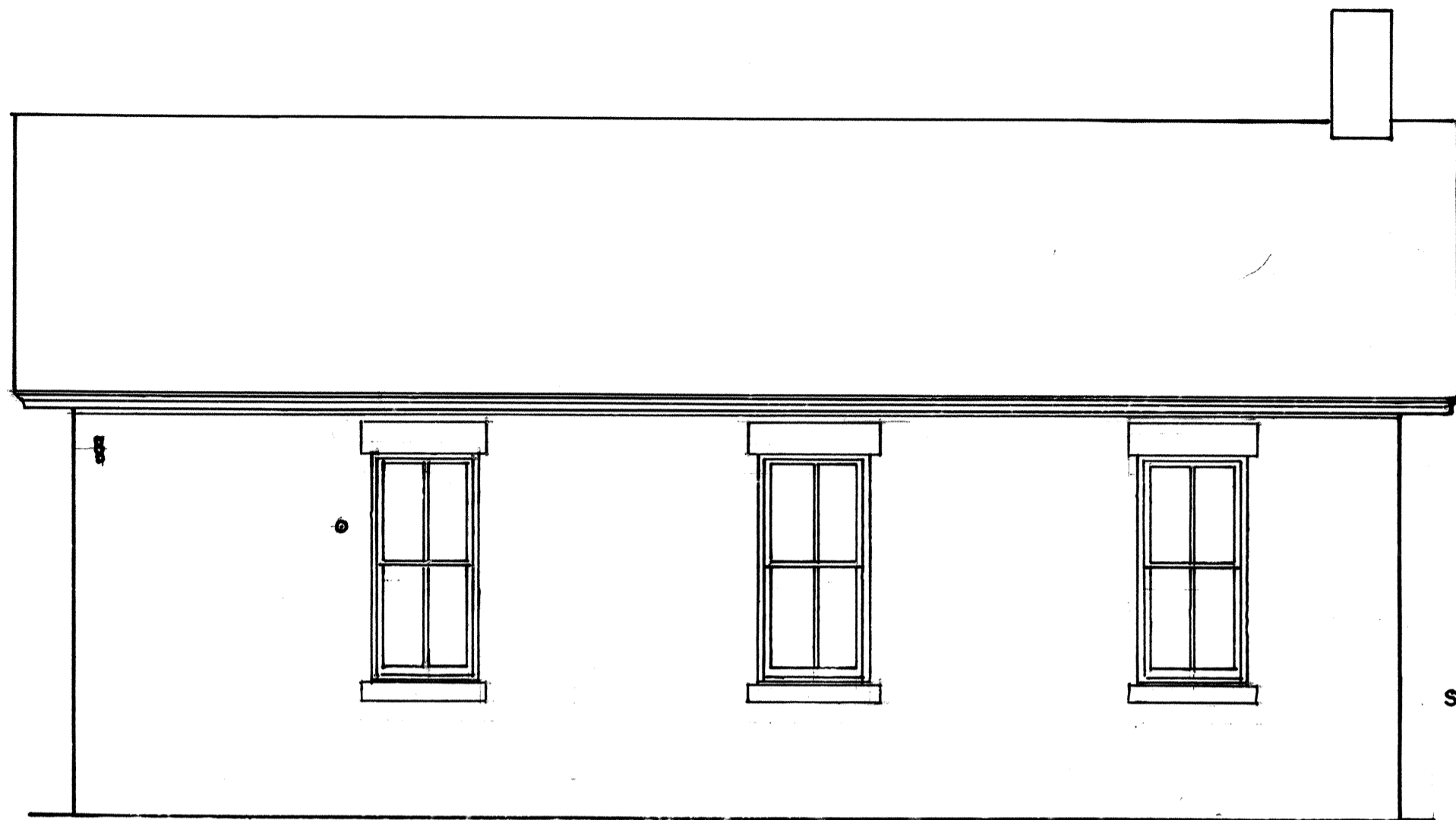
**FREEMAN SCHOOL**

HOMESTEAD NATIONAL MONUMENT of AMERICA, BEATRICE, GAGE COUNTY, NEBRASKA

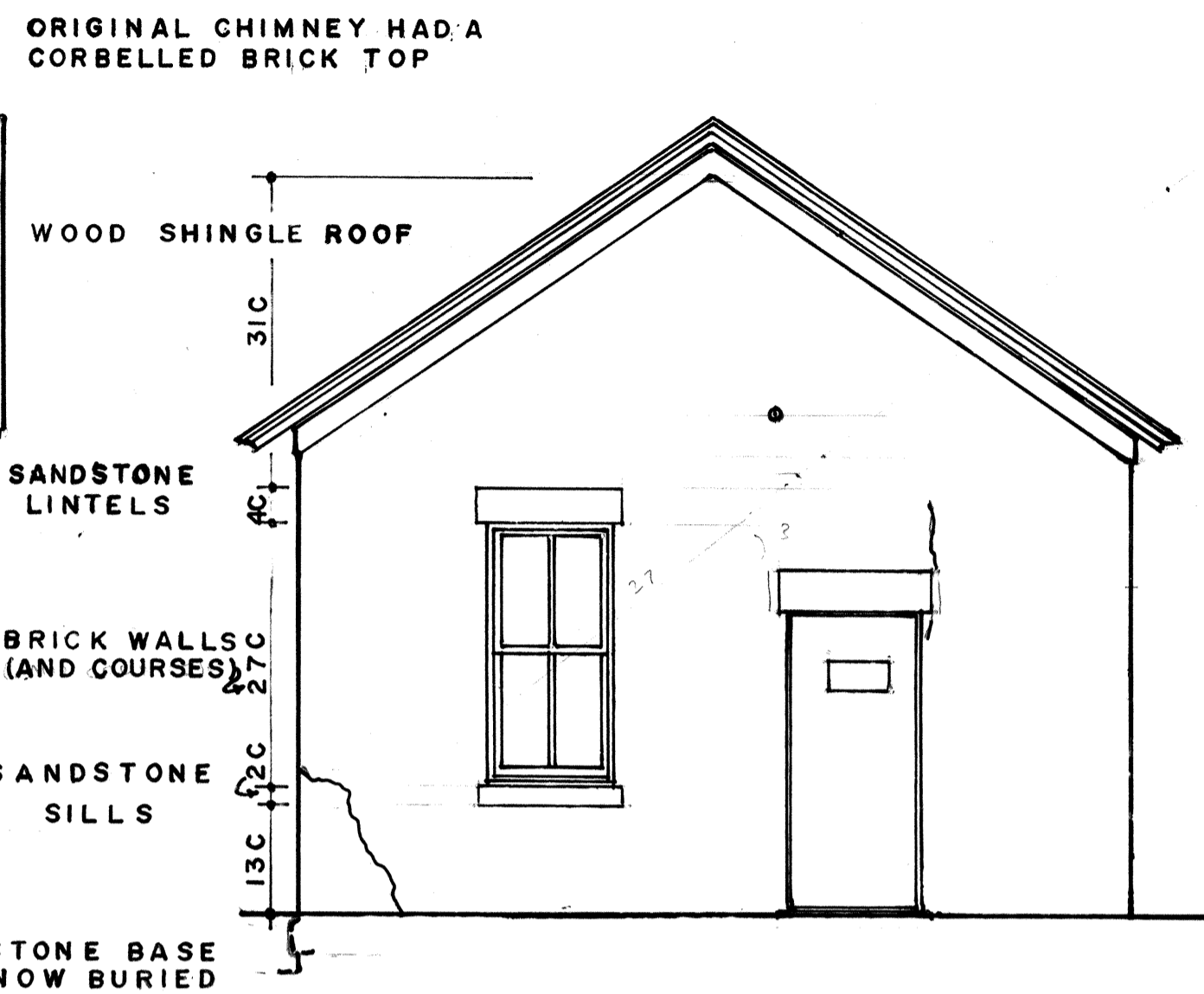
SURVEY NO.  
**NEB  
22**

HISTORIC AMERICAN  
BUILDINGS SURVEY  
SHEET 2 OF 3 SHEETS

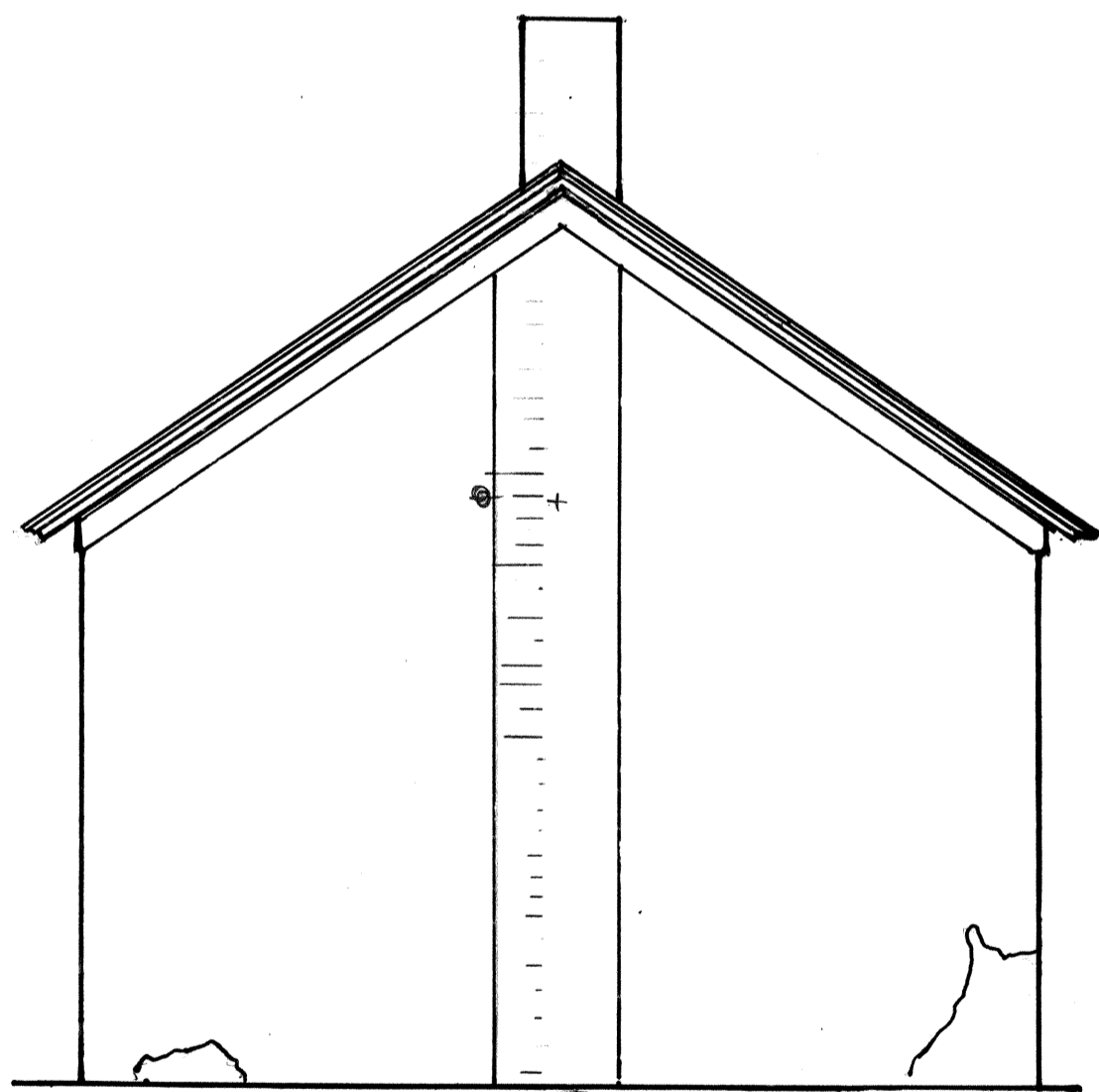
LIBRARY OF CONGRESS  
INDEX NUMBER



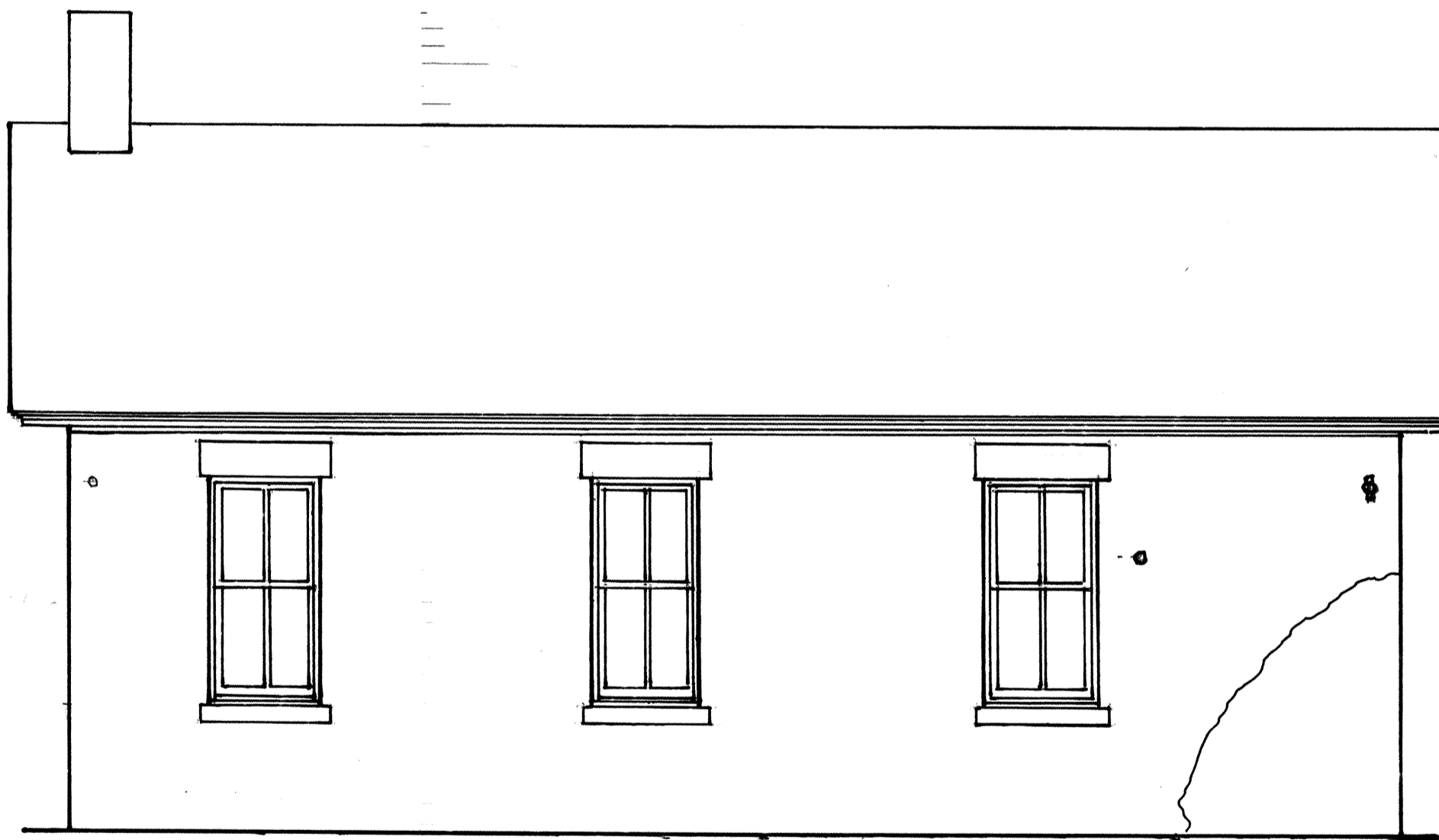
EAST ELEVATION



SOUTH ELEVATION

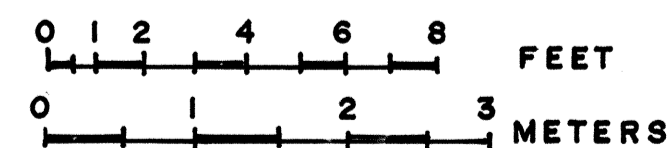


NORTH ELEVATION



WEST ELEVATION

ORIGINAL WINDOWS HAD 6X6 SASH AND EXTERIOR SHUTTERS



DUE TO INSUFFICIENT INFORMATION AT THE TIME OF EDITING, THIS MATERIAL MAY NOT CONFORM TO ANSI OR IAER STANDARDS.

DRAWN BY: POPE

DIV. OF HISTORIC ARCHITECTURE, BR. OF RESTORATIONS  
OFFICE OF ARCHEOLOGY AND HISTORIC PRESERVATION  
UNDER DIRECTION OF THE NATIONAL PARK SERVICE,  
UNITED STATES DEPARTMENT OF THE INTERIOR

NAME AND LOCATION OF STRUCTURE

**FREEMAN SCHOOL**

HOMESTEAD NATIONAL MONUMENT of AMERICA, BEATRICE, GAGE COUNTY, NEBRASKA

SURVEY NO.  
**NEB**  
**22**

HISTORIC AMERICAN  
BUILDINGS SURVEY  
SHEET **3** OF **3** SHEETS

LIBRARY OF CONGRESS  
INDEX NUMBER