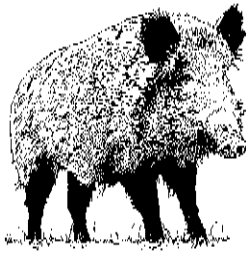




JUNIOR RANGER

We are glad you're here and are participating in the Junior Ranger program. This worksheet is designed to help you explore the visitor center and self-guided interpretive trail in the park and experience activities conducted by the park rangers and volunteers. Complete the booklet and you will earn your Junior Ranger Badge.

San Juan Island National Historical Park belongs to you. It was established to protect and preserve everything within its boundaries, as well as the idea that individuals and nations can settle their differences peacefully. As a Junior Ranger you can help others remember that this national park is for everyone to enjoy and protect.



What is important to you? What is worth preserving? What would life be like without wildlife, wildflowers, trees, clean lakes, oceans and streams? Why would anyone study a piece of broken pottery?

To search for answers, explore San Juan Island National Historical Park. You will find that nature is full of wonders worthy of your efforts.

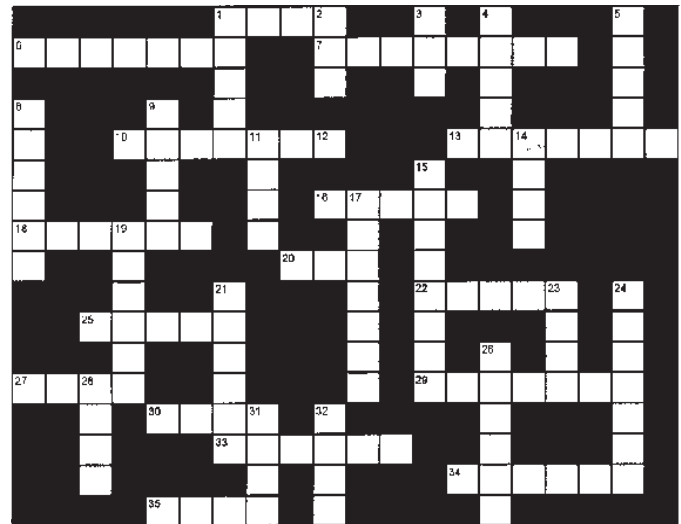
For example, at American Camp, you may spot an orca breaching offshore; or a baby seal stranded at South Beach. The tide flats at English Camp may reveal oysters, clams, mussel and cockle shells, while ospreys skim overhead.

Treasure Hunt

Find the following objects at American Camp and check them off. The visitor center is a great place to start.

- Piece of pottery or red brick
- Chamber pot
- Eagle's nest
- Officers' quarters
- Laundress' quarters
- Redoubt
- Stone honoring Henry M. Robert, author of *Robert's Rules of Order*.

Park Crossword



See Vocabulary on page 3 for clues.

Across

- 1 edible mollusk
- 6 to use again
- 7 object made or worked by humans
- 10 red barked tree
- 13 home to a plant or animal
- 16 a small, light boat
- 18 large bird of prey
- 20 female deer
- 22 to fit in
- 25 a small fruit
- 27 family group of whales
- 29 no longer exists
- 30 predator's victim
- 33 gnawing mammal
- 34 refuse heap from the past
- 35 plays role in natural plant cycles

Down

- 1 fragrant tree
- 2 guide
- 3 young fox or beaver
- 4 animal life
- 5 plant life
- 8 shallow pond
- 9 large bird of prey
- 11 killer whale
- 14 male deer
- 15 marine crustacean
- 17 flower-like sea creature
- 19 blackbirds
- 21 edible mollusk with irregular shell
- 23 small sea bird
- 24 fresh water supply
- 26 narrow waterway
- 28 largest wild mammal on San Juan Island
- 31 the past
- 32 plant with fronds

Matching

1. ____ Don't take them.
2. ____ Year Cutlar shot the Pig
3. ____ Birds that sweep around visitor's feet
4. ____ Date Pickett's company landed here
5. ____ Source of fresh water for soldiers
6. ____ Okay to pick these
7. ____ Site of "Robert's Rock"
8. ____ Bird nest at Visitor Center
9. ____ Year Army left San Juan Island
10. ____ Pickett's house

- A. Spring
- B. 1859
- C. Eagle
- D. Salmon berry
- E. Redoubt
- F. July 27, 1859
- G. Barn swallows
- H. Artifacts
- I. Officers quarters
- J. 1874

Use the San Juan Island NHP official map and guide to complete the activities on this page.

Questions:

1. How many historic buildings have been restored at American Camp?
2. What year was the photo taken of the tents at American Camp?
3. Who shot the pig?
4. To whom did the pig belong?
5. Which direction is the Redoubt from Pickett's Lane?
6. Where can I park my horse trailer?
7. How high is Mt. Finlayson?
8. From what point at American Camp can I see both Mt. Rainier and Mt. Baker (if the weather is clear)?
9. From what structure at American Camp can I see Orcas Island, Lopez Island, the Olympic Peninsula and Vancouver Island?
10. What body of water can I see when looking south of American Camp?
11. Where can I find Grandma's Cove?
12. Where did the British ships anchor during the Pig War crisis?
20. Who or what left the big rocks on the American Camp prairie?



Did you know?

There are more than 385 National Park Service units in the United States.

Eighty-three million acres are available for public use.

More than 260 million people visited the national parks in 2005.

Yellowstone was the first national park, established in 1872.

San Juan Island NHP was established in 1966.

The bigleaf maple at English Camp was a seedling about 1670.

Haro Strait is deeper, wider and provides an easier passage than Rosario Strait.

The Strait of Juan de Fuca was once thought to be the Northwest Passage.

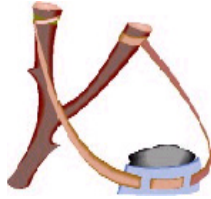
Active Pass, Satellite Bay and Mt. Constitution all are named for ships.



Vocabulary

Adapt: to fit in, change or evolve to survive in an environment.

Artifact: an object made or altered by human beings.



Bald eagle: our national bird is dark with a white-feathered head and tail. The Bald eagle experienced population decline due to habitat destruction and environmental contamination, but in recent years has begun to recover. They eat fish and other small animals. Paired eagles return to the same nest site each year.

Boundary: border; anything marking a limit.

Calcareous: composed of or containing calcium or limestone.

Carnivore: any animal that eats meat.

Cistern: an underground reservoir used to store fresh drinking water.

Clam: any of a large variety of hard-shelled bivalve mollusks, some of which live in the shallows of the sea; others live in fresh water.

Commissary: military storehouse

Conservation: controlled use and systematic protection of natural resources, such as forests, soil and water systems.

Extinct: a species that has vanished from existence.

Fauna: animal life

Fern: a plant characterized by fibrous roots and leaves called fronds. It usually thrives in the shade, does not flower and has spores instead of seeds.



Flora: plant life.

Food Chain: sequence of organisms starting with green plants in which each is food for higher and more complex organisms.

Habitat: the place where a plant or animal lives; an organism's home.

Lagoon: an area of shallow salt water separated from the sea by sand dunes. Also a shallow lake or pond, especially one connected with a larger body of water.

Limestone: rock consisting mainly of calcium carbonate: fossilized shells.

Madrona: The Pacific madrone or madrona is a broadleafed evergreen with reddish, papery bark and dark green, glossy leaves.

Midden: a refuse heap of people's garbage from the past. The shell midden at English Camp is made of clam shells.

Mollusk: large group of marine invertebrates including oysters, clams, mussels, snails, whelks, etc. Typically having a soft unsegmented body enclosed in a calcareous shell.

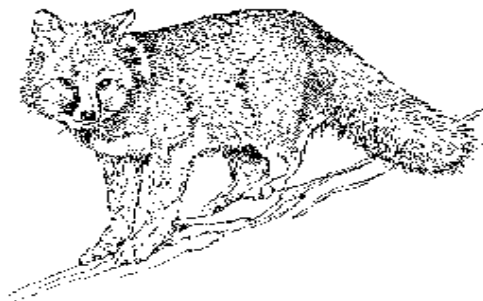
Organism: any living thing.



Osprey: a large bird of prey that plunges feet first into the water to catch its prey. Also called the "fish hawk." It is affected by chemical sprays just like eagles.

Pollution: contamination of soil, air or water.

Predator: Any animal that hunts live animals for food.



Preservation: A process of saving something in its natural state; to keep or maintain intact.

Prey: a predator's victim.

Recycle: to use over again.

Redoubt: an earthen fort.

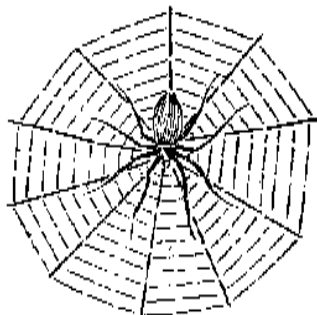
Strait: a narrow waterway connecting two large bodies of water.

Tern: graceful seabird.



Look and listen for surprises throughout the island.

Black-tailed deer
 Whale's blow
 Seals lying on rocks
 Black locust trees
 Red-breasted sapsucker holes in tree
 Slug
 Blue heron
 Ripe berry
 Red fox
 Goldfinch that says "potato chip"
 Clamshell
 Canada Goose
 View of Mt. Baker
 Sword fern
 Spiderweb



American Camp's redoubt, an earthen fort, still stands. It was built in 1859 by Lieutenant Robert and his squad of engineers (below) to discourage the British from landing. Check your park map for how to get there. How many gun platforms (raised earth surfaces) did you count inside the redoubt? _____.



Things to do in the Park

Hike
 Pick certain berries
 Observe flowers and trees
 Pick up shells
 Study artifacts in museums
 Go back in time, pretend you are there
 Notice texture and shapes of driftwood
 Boat and kayak
Picnic
 Observe eagles, osprey, gulls
 Observe deer, fox, snakes, rabbits
 Observe whales, seals, porpoises, otters
 Observe crabs, clams and barnacles
 Watch a sunset
 Look at the stars

Answers to Questions

1. Two 2. 1859 3. Lyman Cutlar, 4. Hudson's Bay Company, 5. West, 6. Fourth of July Beach trailer park or South Beach parking area, 7. 290 feet, 8. Officers' Quarters, 9. Robert's Redoubt, 10. Strait of Juan de Fuca, 11. At the base of the trail going past Belle Vue Farm site, 12. Griffin Bay, 13. A glacier.

Key to Matching

1-H, 2-B, 3-G, 4-F, 5-A, 6-D, 7-E, 8-C, 9-J, 10-I

Crossword Answer

