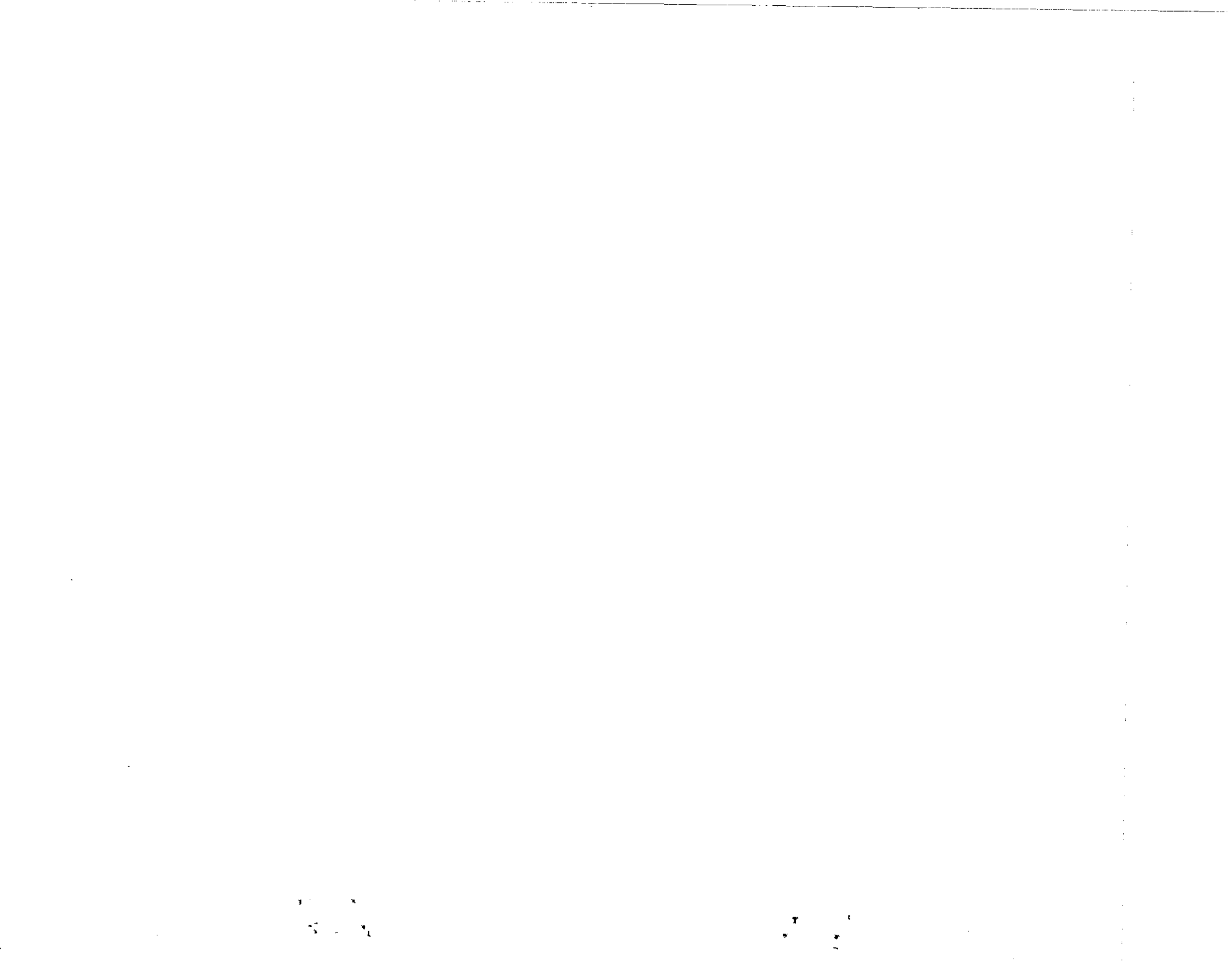


# GENERAL MANAGEMENT PLAN ENVIRONMENTAL ASSESSMENT

## KENNESAW MOUNTAIN NATIONAL BATTLEFIELD PARK



U.S. DEPARTMENT OF THE INTERIOR  
NATIONAL PARK SERVICE  
SOUTHEAST REGION



## SUMMARY

This General Management Plan/Environmental Assessment proposes and evaluates a preferred management strategy for long-term protection and visitor use of Kennesaw Mountain National Battlefield Park, located in metropolitan Atlanta, Georgia. The park, which memorializes the site of some of the heaviest fighting of the Atlanta campaign of the Civil War, has been under the protection of the National Park System since 1933.

### Major Issues

Because of its location in a rapidly growing urban area, the park in recent years has experienced problems with conflicting visitor uses. The park's open spaces and placid setting attract heavy local recreation use, especially on nice weekends during spring and fall. This has led to overcrowding of the visitor center area at certain times (mostly Sunday afternoons) and controversy between local visitors and those who come to the park to enjoy its historical features.

### Proposed Changes

In an effort to address those major issues, the National Park Service proposes the following changes at Kennesaw Mountain National Battlefield Park:

- \* Conflicting uses of the open field near the visitor center will be separated and dispersed to other locations in the 2,884-acre park. Local visitors seeking recreation space will be directed to other, non-historic fields in the park, reserving the visitor center area for those who come to experience the story of the Kennesaw Mountain battle.
- \* Living history demonstrations now conducted at the visitor center will be relocated to Cheatham Hill, providing a more accurate historical setting as well as an official presence that will help protect important Civil War earthworks. To discourage general recreation use of Cheatham Hill, the Park Service will remove existing pit toilets and picnic tables.
- \* In a further effort to protect the park's historic resources from non-appropriate uses, the Park Service will increase Ranger patrols and strictly enforce laws and regulations on intoxication, under-age drinking, drug use and disorderly conduct and destruction of property. The park staff will also work with news media to encourage local residents to use the nearby Chattahoochee River National Recreation Area and other local facilities as alternative recreation sites on spring and fall weekends.

- \* Civil War earthworks and other cultural resources in the park will be stabilized and protected from erosion by grass planting, vegetative screening and other measures to prevent visitors from trampling critical ground cover. A long-term goal will be to gradually restore the park's historic scene and vegetation.
- \* The park's interpretive program will be strengthened through new wayside exhibits throughout the park and improved parking at major interpretive areas such as Kolb Farmhouse, Pigeon Hill and the 24-Gun Battery.
- \* Further steps will be taken to safeguard the park's collection of Civil War artifacts and its archeological resources.

#### Other Alternatives Considered

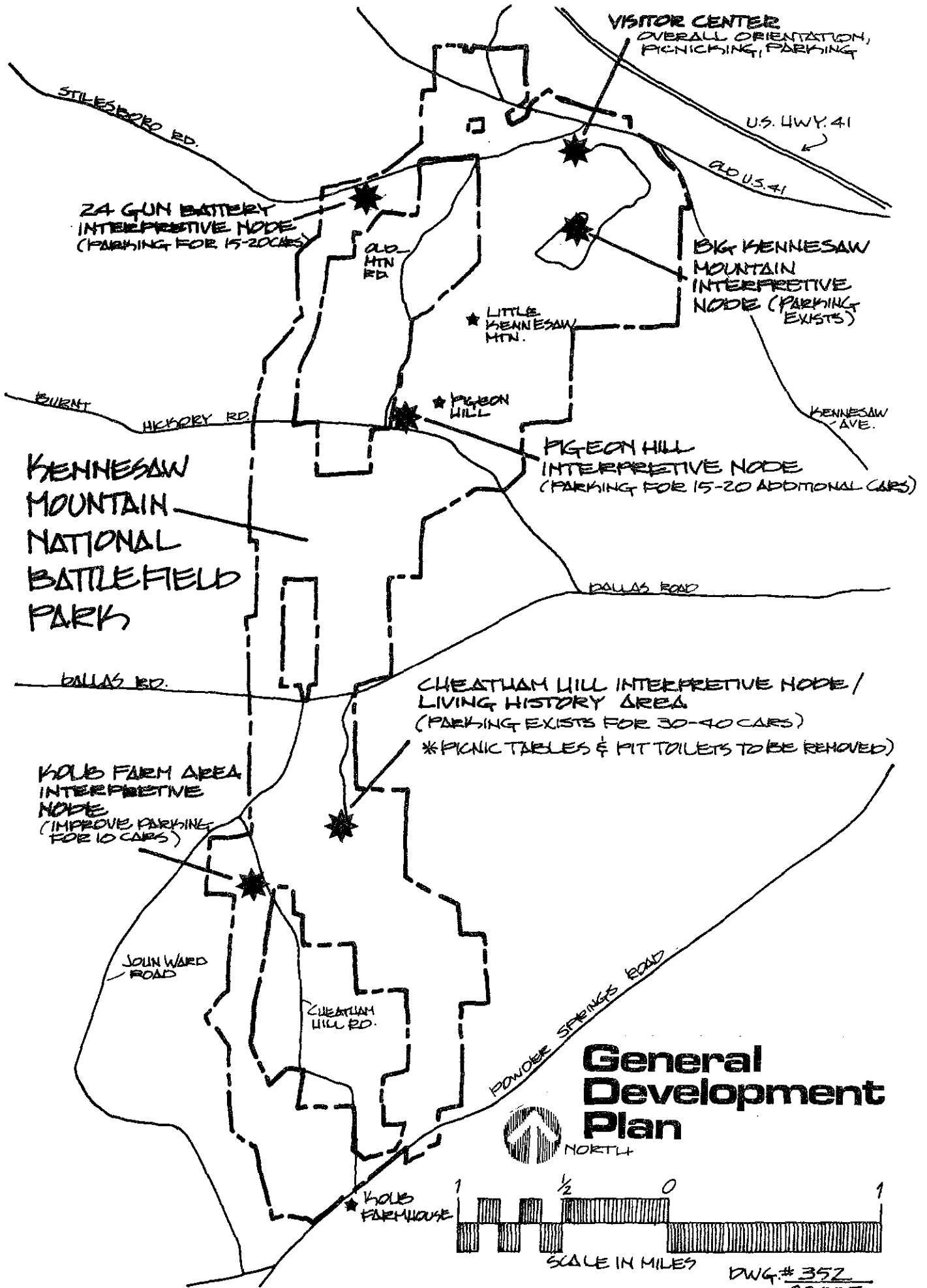
In addition to the preferred management strategy identified in this document as the Proposed General Management Plan, the National Park Service considered two other options:

- \* A "no action" alternative that would leave the park's resource protection and visitor use policies unchanged; and
- \* An alternative calling for management of the park strictly as a Civil War memorial, banning all recreational uses.

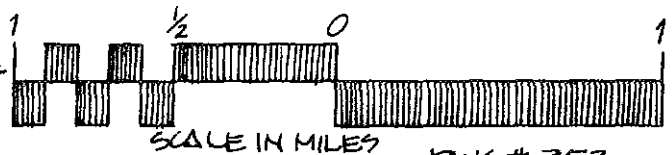
The three alternatives and the environmental impacts of each are discussed in detail elsewhere in this document. Environmental consequences would be relatively minor. However, the alternative calling for management of the park solely as a Civil War memorial also contemplates the removal of 200 acres of forest in an effort to restore the park to its appearance at the time of the Civil War.

#### Comments Invited

The National Park Service invites your comments on the Proposed General Management Plan and alternatives for Kennesaw Mountain National Battlefield Park. Comments may be sent to the Southeast Regional Director, National Park Service, 75 Spring Street, SW, Atlanta, Georgia 30303. Once comments have been evaluated, the National Park Service will announce its decision and begin implementing the plan.



# General Development Plan

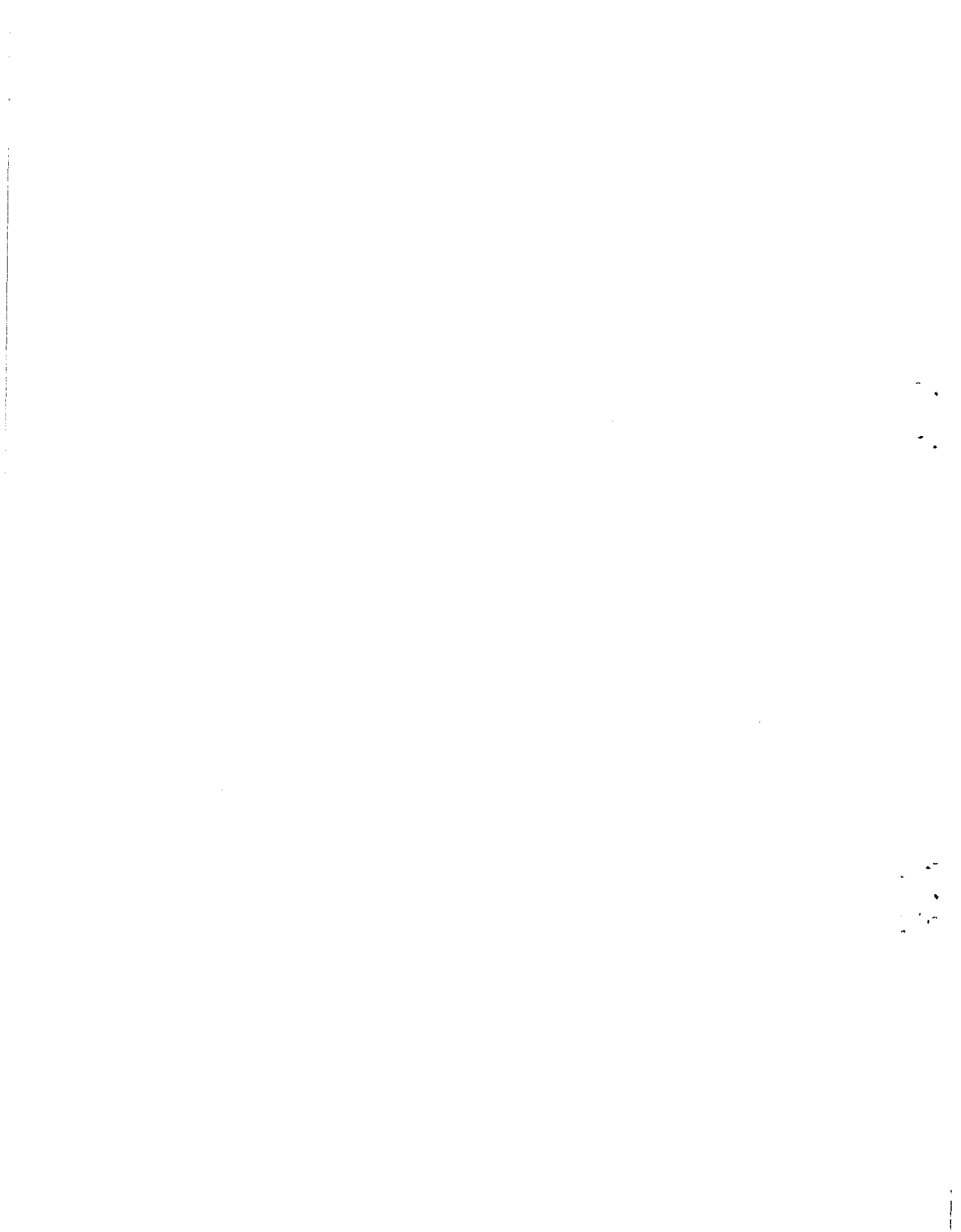


DWG.# 352  
80,005  
3-14-83



## TABLE OF CONTENTS

SUMMARY.....	i
TABLE OF CONTENTS.....	v
PURPOSE AND NEED FOR THE PLAN.....	1
DESCRIPTION OF THE PARK.....	3
PROPOSAL AND ALTERNATIVES.....	5
Proposed General Management Plan.....	5
Land Use and Management.....	5
Resources Management.....	7
Interpretation and Visitor Use.....	9
General Development.....	10
Boundary Adjustments and Land Protection.....	11
Plan Implementation.....	11
ENVIRONMENTAL CONSEQUENCES OF THE PROPOSED ACTION AND ALTERNATIVES.....	12
Impacts on Cultural Resources.....	12
Impacts on Natural Resources.....	13
Impacts on Visitors.....	14
Impacts on Park Management.....	14
Impacts on Socioeconomic Environment.....	15
LIST OF PERSONS AND AGENCIES CONSULTED.....	17
APPENDICES	
A. Legislation.....	19
B. Management Objectives.....	29
C. Visitation (bar graph).....	30
GRAPHICS	
General Development.....	iii
Vicinity Map.....	2
Regional Map.....	4
Management Zoning/Boundary Adjustment.....	6





## PURPOSE AND NEED FOR THE PLAN

Kennesaw Mountain National Battlefield Park originally was authorized for protection by the War Department in 1917 and was transferred to the Department of the Interior as a unit of the National Park System in 1933. The 2,884-acre park includes the site of some of the heaviest fighting of the Atlanta campaign of the Civil War. The park was set aside as an important cultural property dedicated to public inspiration and interpretation of the significant historic events that occurred here. The entire area is listed on the National Register of Historic Places.

Major cultural resources include approximately 11 miles of Civil War earthworks and an historic house. These are situated in hilly terrain that served as the focus of one of the last major Confederate defense against the Union assault on and investment of Atlanta in 1864.

The park is on the northern edge of metropolitan Atlanta in an area that has experienced significant urban development in recent years. This development has led to corresponding increases in recreational use of the park. Total visitation was approximately one million in 1982. In addition, several commuter roads that cross the park carry an estimated 6.7 million people through the park annually.

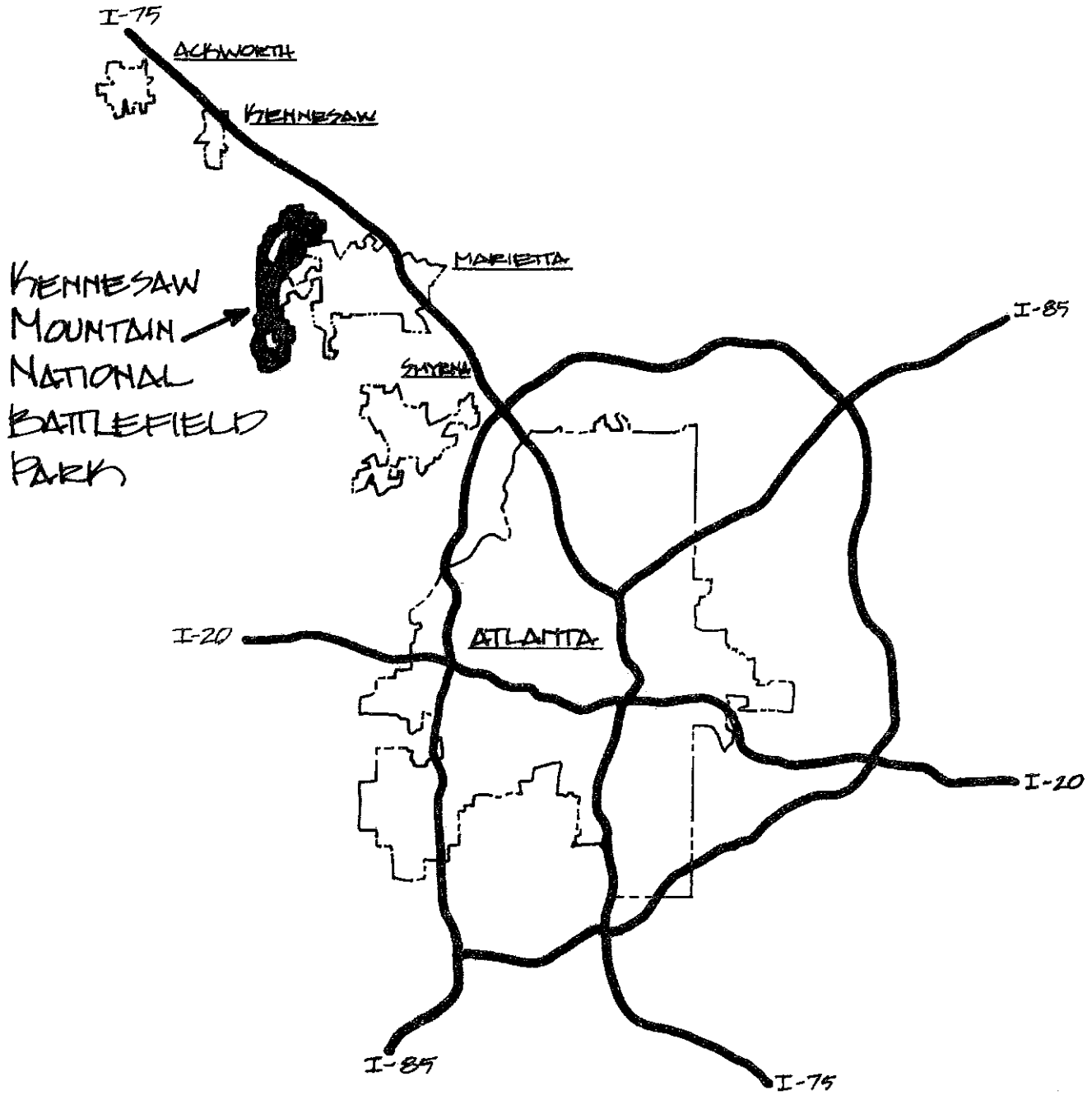
The principal issues at Kennesaw Mountain National Battlefield Park are overuse of the park at certain times, associated resource damage, and visitor congestion. For example, visitors have trampled the vegetative cover on some of the park's earthworks resulting in localized erosion. Moreover, visitor facilities such as parking areas and interpretive waysides periodically attract large numbers of recreationists in particular locations, resulting in some resource damage.

In addition to these use-related issues, this plan will address:

1. Protection of the park's historic earthworks and other cultural resources;
2. Interpretation of the park's historic themes/historic scene;
3. Park collections management; and
4. Land protection and boundary adjustments.

The purpose of this General Management Plan/Environmental Assessment is to provide public and agency scrutiny of the options reasonably available to resolve these issues, and to review the environmental consequences expected from adopting a given alternative.

The plan eventually chosen is intended to help achieve the conditions identified in the park's management objectives to preserve resources and provide for visitor use. These objectives are listed in Appendix B. The overall goal of managing Kennesaw Mountain National Battlefield Park is to provide an opportunity for public education and inspiration through resource protection and interpretation/appreciation of this Civil War battle site. The plan, when approved, is expected to help guide park management for the next 10 to 15 years.



**Vicinity**



NORTH  
 DWG. NO.  
 352  
 80,004  
 3-14-83

## DESCRIPTION OF THE PARK

Kennesaw Mountain National Battlefield Park represents a site that was integral to the Confederate attempt to defend Atlanta from the Union forces of General William T. Sherman in 1864. The defense consisted of a series of battles from June 19 through July 2, 1864. Approximately 5,500 troops were killed, wounded, or missing in action as a result of the Kennesaw Mountain battles.

Major highways in the park vicinity are Interstate 75 and U.S. Highway 41. Commuter arteries such as Dallas Road, Burnt Hickory Road, Powder Springs Road and Stilesboro Road cross or abut the park, providing access to residential areas and nearby commercial, industrial and government establishments.

Visitor facilities include a visitor center/administrative building housing a small museum and theater. There are two designated picnic areas within the park and three major interpretive sites--Big Kennesaw Mountain, Cheatham Hill, and Kolb Farmhouse. These are accessible by road and parking is provided. During weekends (February through September), a shuttle bus is provided to transport visitors to the top of Big Kennesaw Mountain. Living history programs including weapons firing and camping demonstrations also are conducted during summer months. More than 18 miles of trails (foot and horse) link the interpretive attractions of the park. In addition, the park has conducted camping and environmental education programs for organized groups.

Visitation to the park is spread fairly evenly throughout the year except for December and January, the months of lowest visitation. More than half of the park's annual visitation occurs during spring and fall weekends (mostly Sunday afternoons), resulting in traffic congestion and associated problems in the vicinity of the visitor center.

Administrative facilities at the park include offices in the visitor center, a maintenance area and two park houses. There are also several administrative roads. Present facilities are considered adequate.

# KENNESAW MOUNTAIN



## Region

KENNESAW MTN. NATIONAL BATTLEFIELD PARK

UNITED STATES DEPARTMENT OF THE INTERIOR / NATIONAL PARKS SERVICE

NO SCALE

DWG. NO. 352/80,003  
3-14-83

## PROPOSAL AND ALTERNATIVES

Several options have been considered in an effort to resolve the issues now existing at Kennesaw Mountain National Battlefield Park. These options include:

1. A "no action" alternative (continue status quo). Under this option steps would be taken to inventory and protect the park's resources as required by law. However, no long-term steps would be taken to resolve conflicting use issues or the park's minor interpretive deficiencies;
2. An alternative calling for modest changes to improve the park's interpretive program, to protect its resources and to accommodate visitor use. This is the preferred alternative of the National Park Service and constitutes the proposed General Management Plan for Kennesaw Mountain National Battlefield Park; and
3. An alternative that would ban recreational activities in the park and concentrate solely on use of the park as a memorial to the Civil War. This approach also could include total restoration of the historic scene of the Kennesaw Mountain battlefield.

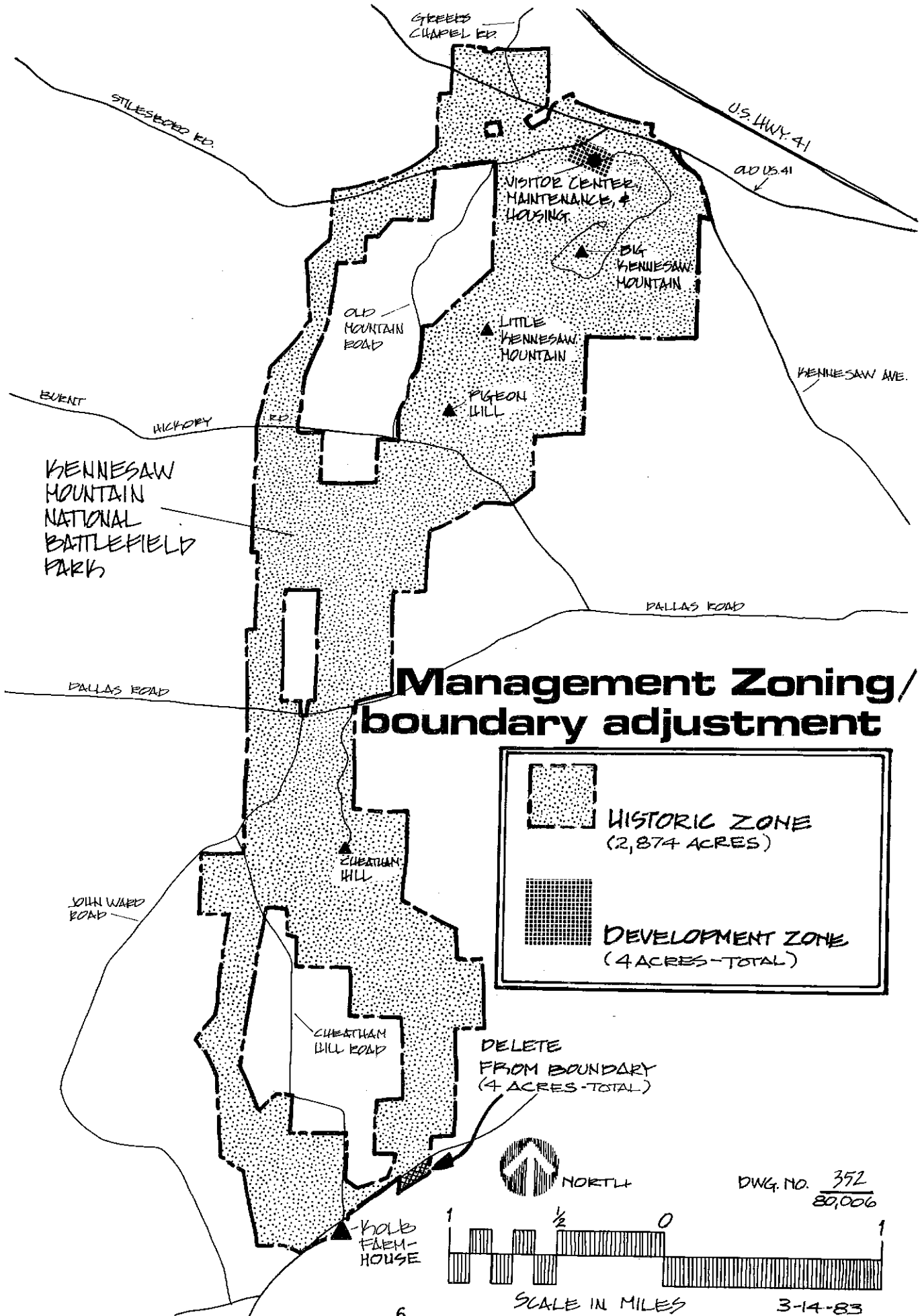
Details of the preferred alternative follow. Other alternatives will be more fully evaluated and compared with the preferred alternative in a later section.

### Proposed General Management Plan

Land Use and Management: All public lands within Kennesaw Mountain National Battlefield Park are listed on the National Register of Historic Places. Consequently, the entire area is to be managed with preservation and interpretation of cultural values as the central focus.

To prescribe management emphasis for given portions of Kennesaw Mountain National Battlefield Park, the park is divided into management zones. Two management zones will be contained in Kennesaw Mountain National Battlefield Park.

1. The largest zone will be an historic zone totaling approximately 2,878 acres. Preservation and interpretation of historic sites, structures and objects will be the management emphasis.
2. The second zone will be a park development zone consisting of the 4 to 5 acres that make up the existing visitor center/ administrative building and parking lot, maintenance facility and park housing.



## Resources Management

Park historic collections - Museum display objects, study collections, and field display objects are now adequately preserved and maintained. Weapons, implements, clothing, and accoutrements that are part of the museum display or study collection generally have been given professional treatment (restoration, cleaning, coating) by the National Park Service's Harpers Ferry Center. Present management of these collections includes appropriate storage and periodic inspection for deterioration. This will continue, and any necessary treatment of these collections in the future will be coordinated with the Park Service Regional Curator and Harpers Ferry Center.

The park's collection of books and manuscripts is kept in the visitor center building. Rare books are stored in locked cabinets. All park collections will be inspected and given appropriate preservative treatment. A great many books and other printed materials are on hand to provide information on the history of park resources but a compilation of all the varied sources of historical information is needed. This task will be performed by a local consultant under contract or by the National Park Service's Denver Service Center.

Carriage parts on many of the park's cannons need replacing; however, the cannon tubes are in acceptable condition. In consultation with the Regional Curator, the park will inventory the needed parts and replace them. Once the cannon carriages are repaired, a scheduled inspection and maintenance program will be initiated to preserve the cannons for visitor interest and interpretation. Cannons will be placed in historically accurate locations.

Structures and Archeological Resources - A List of Classified Structures has been prepared and includes Kolb Farmhouse, Illinois Monument, McCook Monument, Fellows Monument and the grave of an unknown U.S. soldier. All of these are documented and entered in the National Register of Historic Places as contributing elements to the significance of Kennesaw Mountain National Battlefield Park. The treatment that has been recommended for these classified structures is "preservation." The Park Service will maintain the existing form, integrity and materials, and avoid structural deterioration. The historical monuments and markers show some weathering and will be professionally evaluated and given needed preservation treatment, followed by scheduled inspection and maintenance.

Kolb Farmhouse is in good condition and needs only scheduled maintenance, which will be accomplished in accordance with an approved preservation guide. The park will explore the feasibility of providing additional interpretive activities at the Kolb Farmhouse.

Known archeological resources in the park include about 11 miles of Civil War earthworks, several house foundations and several Indian occupation sites. Recently, a number of rock mounds were discovered in the park, and there is reason to believe the mounds are associated with

prehistoric Indian occupation. These rock mounds will be further investigated through non-destructive archeology in an effort to discover their identity and significance. The rock mounds will be recorded and left in place with periodic patrolling to avoid destruction or vandalism. Other known Indian occupation sites also will be monitored and patrolled to avoid destruction and loss of cultural information.

To comply with Section 110 of the National Historic Preservation Act, as amended, and to assure that management has all the cultural information needed to interpret and protect park resources, a comprehensive archeological inventory will be carried out at Kennesaw Mountain National Battlefield Park. As provided in NPS-28, the National Park Service's Cultural Resources Management Guidelines, the inventory will "...document the location, description, significance, threats, and management requirements for archeological resources in the park." With completion of the archeological resources inventory, eligibility of known or newly discovered cultural resources can be reviewed and the park's National Register of Historic Places form can be updated accordingly.

Several segments of the Civil War earthworks have been damaged by visitor foot traffic destroying cover vegetation. Rainwater runoff has eroded the earthwork fabric in many places. To insure long-term protection of these resources, erosion scars and depressions will be filled in as necessary. Trees will be selectively cleared to open the areas to sunlight, and the areas will be planted in fast-germinating, hardy native grasses. The entire 11 miles of earthworks will be monitored by park management to identify any additional damage or threats. Tree removal, site rehabilitation, and planting will occur as needed. A long-term goal (20 to 30 years) will be to gradually restore much of the park's historic scene and vegetation. The proposed General Management Plan will begin to accomplish this goal, and future planning efforts will address further measures to restore the historic appearance.

A priority for earthworks protection will be Cheatham Hill--the most threatened area--and two artillery positions atop Big Kennesaw Mountain. As cyclic funds and manpower become available, other segments of the park's earthworks at or near interpretive nodes will be selectively cleared of trees and/or rehabilitated and stabilized with grass.

All areas of the park will be regularly patrolled to monitor cultural resources and prevent unauthorized excavation and collection of artifacts. All management of cultural resources at Kennesaw Mountain National Battlefield Park will be undertaken in accordance with the Management Policies of the National Park Service and NPS-28, "Cultural Resources Management Guidelines."



### Interpretation and Visitor Use

Visitor entrance fees will not be charged at the park due to the variety of entrances. User charges would not appear to be cost effective. However, the park will explore the possibility of a concession contract for weekend shuttle service to the top of Big Kennesaw Mountain.

The visitor center area provides visitors with their first impression of Kennesaw Mountain National Battlefield Park. Management's intent here is to promote a sense of arrival for visitors who come to experience the park's cultural history.

Active recreation currently taking place in the field in front of the visitor center will be relocated to other non-historic fields in the park. This change is intended to disperse use, reduce crowding of the visitor center area and provide park visitors with an unencumbered landscape highlighted by the attractive visitor center and grounds and Big Kennesaw Mountain rising in the background.

In addition, the park's living history program will be relocated from the visitor center area to Cheatham Hill. This move will provide an historically accurate location for park living history demonstrations and help to reduce crowding in the visitor center area. The presence of park personnel or volunteers participating in living history demonstrations at Cheatham Hill will also help protect the earthworks. The Cheatham Hill location can accommodate a number of programs depicting the Civil War battles and military life.

Park Rangers will strictly enforce laws and regulations relating to intoxication, drug abuse, under-age drinking, excessive noise and destruction of property. In a further effort to reduce congestion at the visitor center on spring and fall weekends, the park staff will work with local media to encourage use of the nearby Chattahoochee River National Recreation Area as an alternate recreation site.

Interpretation of the park's historic themes will take place at six nodes. Part of the park's interpretive program will stress the vulnerability of park resources to damage. Visitors will be cautioned to avoid walking directly on the park's historic earthworks.

Overall park orientation will occur at the visitor center. Selective modification of museum displays will be undertaken in consultation with the Regional Curator. In addition, information calling attention to the interpretive opportunities available on park trails will be inserted in the visitor center slide presentation. A guided interpretive brochure will also be developed.

At Big Kennesaw Mountain, Pigeon Hill, Cheatham Hill, the 24-Gun Battery and Kolb Farmhouse, historic information on the battles will be provided to the visitor. This interpretation will include a variety of printed and graphic presentations to depict the battles in an historically accurate manner.

A wayside exhibit plan to meet interpretive needs at the park will be done by the National Park Service's Harpers Ferry Center. In addition, park signs will be reviewed to assure appropriateness and accuracy.

At Cheatham Hill, an important part of the Kennesaw story, existing picnic tables and pit toilets will be removed. Visitor circulation at Cheatham Hill will be modified (possibly through vegetation screening) to keep visitors off the historic earthworks enroute to the prominent Illinois Monument 1/4-mile south of the Cheatham Hill parking lot.

Approximately 3 acres of open fields in the Cheatham Hill area will be allowed to return to forest to more accurately depict the historic landscape. Approximately 2-3 acres of woods in the Pigeon Hill area will be selectively thinned or cleared as an historic field.

Opportunities for jogging, hiking, leisure walking and nature study will continue in the park as long as cultural resources are not threatened.

Because of the number of roads through the park, numerous parking pulloffs and the fact that many people may walk from adjacent residential areas, it is difficult to assign a maximum use capacity for Kennesaw Mountain National Battlefield Park. On peak user days (spring and fall weekends) several thousand people might visit the park. On other days, use of the park probably will average less than 300 people.

General Development: No development is proposed except for minor improvements to accommodate parking at interpretive areas.

An existing parking area adjacent to Cheatham Hill Road will be improved to accommodate about 10 cars for visitors attending interpretive programs at Kolb Farmhouse area. Parking for an additional 15-20 cars will be provided on the shoulder of Burnt Hickory Road for historical interpretation of the Pigeon Hill area. Parking for 15-20 cars will be developed off Stilesboro Road for interpretation of the 24-Gun Battery.

Day labor or volunteers will be used to accomplish the majority of the proposed developments. Costs of development of parking are not expected to total more than \$10,000-\$15,000.

Boundary Adjustments and Land Protection: Park management will endeavor to be included in reviewing new development proposals adjacent to Kennesaw Mountain National Battlefield Park to help guide rational land use decisions in the area and avoid future significant adverse influences on the park.

In addition, the park will seek to delete from its boundary approximately 4.6 acres of property south of Powder Springs Road and east of Kolb Farmhouse. This sliver of land is isolated by the road and is not considered necessary for park purposes.

Approximately 2 acres of non-Federal public (county, state) property are located within the park. All of this property is devoted to road rights-of-way and there is no reason to provide additional protection. Continued use of these roads is essential to orderly traffic flow in the area.

Plan Implementation: High priority will be assigned to protection of deteriorating Civil War earthworks and facility removal at Cheatham Hill and protection of earthworks atop Big Kennesaw Mountain. An equally high priority will be placed on implementing the proposals to relocate non-conforming uses from the visitor center and environs and to move living history demonstrations from the Cheatham Hill area.

An interpretive wayside exhibit plan to portray the historic themes of the park will be programmed shortly after approval of the General Management Plan.

As time, manpower and money allow, the other proposals in the plan will be accomplished.

## ENVIRONMENTAL CONSEQUENCES OF THE PROPOSED ACTION AND ALTERNATIVES

### Impacts on Cultural Resources

Cultural resources would receive long-term protection under either the proposed plan or the alternative that contemplates management of the park only as a Civil War memorial. Any current deterioration or threats to historic earthworks in the park would be ameliorated through monitoring and appropriate stabilization. Cultural properties such as the Kolb Farmhouse, the many monuments located within the park, known or suspected Indian occupation sites, historic structure foundations and the park's collection of historical records and equipment would be rehabilitated and/or preserved to maintain integrity of these resources over the long-term. There is the possibility of loss of archeological informational resources from tree clearing considered in the alternative to totally restore the park's historic scene. To avoid such a possibility, the areas to be cleared would be surveyed for archeological resources before tree removal begins.

Under the proposed plan, there should be no adverse effects on the qualities that led to the listing of Kennesaw Mountain National Battlefield Park on the National Register of Historic Places. None of the minor development proposals are expected to endanger archeological resources. No major earthmoving is envisioned, and any that does occur will be preceded by an archeological survey undertaken by a qualified professional archeologist. Proposed visitor use management should be beneficial to the park's cultural resources since appreciation of the resources and themes will be encouraged. Direct foot traffic on such resources as the Civil War earthworks will be discouraged through a combination of interpretation and landscaping to guide pedestrians.

Under the "no action" alternative, an attempt would be made to preserve and maintain the park's Civil War earthworks, but the success of the program might be doubtful without other necessary measures to guide visitor use. Thus, there is a good possibility under the "no action" alternative that earthworks would continue to suffer from pedestrian traffic. Localized deterioration (erosion) of the historic fabric could be expected in a number of places without a coordinated effort to stabilize the earthworks and provide appropriate visitor circulation. With no action taken to monitor and preserve the park's other cultural resources, historic fabric and information might be lost. Records in the park's collections might also be misplaced under a "no action" alternative.

## Impacts on Natural Resources

Few natural resource impacts associated with the proposed General Management Plan or the "no action" alternative are anticipated. Selective tree removal called for in the proposed General Management Plan should not adversely affect wildlife species (birds, squirrels, opossums, etc.) present in the area. There will be no major long- or short-term animal habitat destruction. There should be no effects on any wildlife included in the Federal List of Endangered or Threatened Species such as the gray bat, Indiana bat, red-cockaded woodpecker, bald eagle and Arctic peregrine falcon. There is no record of the existence of any of these species in the park.

Under the alternative that contemplates total restoration of the park's historic scene, approximately 250 acres of forest (second and third growth mixed pine and hardwoods) would eventually be cleared and 55 acres reforested in an attempt to return the area to some semblance of its appearance in the summer of 1864. Cutover areas would be seeded in grasses and maintained as open fields to avoid soil erosion and associated sedimentation/siltation in nearby streams. Over the long-term, there would be a net reduction of 200 acres of wildlife nesting, feeding habitat and refugia. But the clearing and reforestation program would provide edge areas (borders between open fields and forests) that can benefit certain wildlife species.

Under the alternative that contemplates totally restoring the historic scene, federally-listed endangered or threatened species would not be affected. However, several plant species included in the Georgia Protected Species List and considered to be of special concern to the Fish and Wildlife Service might be affected. Some of these plants, such as bay star-vine and Tennessee mountain-mint, occur in the understory of mixed hardwoods and pines. If present at Kennesaw Mountain National Battlefield Park, they could be adversely affected by any program to clear large tracts of trees. This would probably not be a major consideration under the proposed General Management Plan or a "no action" alternative since extensive deforestation is not proposed under either of these alternatives.

No floodplain areas or wetlands would be involved in any of the alternatives.

Water and air quality levels in the park should not be appreciably affected in the short- or long-term regardless of the alternative. However, under the proposed General Management Plan and the alternative that would totally restore the historic scene, there may be some water quality benefits from vegetative planting to decrease erosion of bare soils.

### Impacts on Visitors

The proposed General Management Plan for Kennesaw Mountain National Battlefield Park is intended to protect park resources while accommodating visitor use. However, the main priority will be to provide opportunities for visitor appreciation of the historic importance of the park. The visitor use and interpretive programs called for in the plan are expected to accomplish this. In addition, crowding should occur only periodically (during peak use weekends in spring and fall) and should be only a minimal inconvenience even then. Conflicts between visitors should be minor.

As with the proposed General Management Plan, implementing an alternative calling for management of the park strictly as a memorial to the Civil War would help to assure visitor appreciation of the park's Civil War themes. High quality visitor programs would convey the historic importance of Kennesaw Mountain National Battlefield Park. Crowding of park facilities probably would not occur at anytime since this alternative would preclude some current non-historic uses in the park.

Under the "no action" alternative, a variety of historic and non-historic recreation uses would occur at the park. These uses would not always be separated, and conflicts between users probably would occur. Crowding would continue to be a problem during spring and fall weekends.

### Impacts on Park Management

Under both the proposed General Management Plan and the alternative that would manage the park strictly as a Civil War memorial, there would probably be at least a short-term requirement to enforce pertinent visitor use limitations proposed for the visitor center area. Several of the current positions at Kennesaw Mountain National Battlefield Park could satisfy the enforcement requirement probable under the proposed General Management Plan without an increase in the park's base funds. However, one or two additional temporary law enforcement personnel might also be appropriate in the short-term to implement the proposed General Management Plan. Even these temporary personnel can probably be accommodated within the approved operating base of the park. Funds required could be approximately \$5,600 per year for additional seasonal law enforcement personnel.

With the alternative calling for management of the park strictly as a Civil War memorial, law enforcement personnel requirements would probably be greater than under the proposed General Management Plan. This could be especially true in the short run where it may be

necessary to call up special National Park Service personnel to help Kennesaw Mountain National Battlefield Park contact park users and enforce park rules. If these special enforcement units were needed for five or six weekends in the spring, the cost could be approximately \$15,000 - \$20,000. Without such special units, the park might need to recruit three or four seasonal law enforcement personnel in the short-term. Costs for such personnel could be as much as \$12,000 per year.

The preceding is speculative, since it is not clear how well the visiting public and park neighbors would accept the restrictions contemplated in managing Kennesaw Mountain National Battlefield Park strictly as a Civil War memorial. If the public were to quickly accept such a management scheme, law enforcement costs may not be an appreciable requirement of the park's program. However, if the program is not readily accepted by any segment of the public, law enforcement requirements could be substantial.

In addition to law enforcement costs and personnel needed under an alternative that would manage the park as a Civil War memorial only, there would be additional maintenance costs. The park would be increasing its mowing area. Additional maintenance personnel and money might be required--up to \$10,000 per year--unless the park issued a "special use" permit for private sector haying in these open fields.

With a "no action" alternative, there would be no change in the present enforcement and maintenance requirements of the park. However, there may be more need in the future to mediate conflicts between users if use and crowding on selected weekends continues or grows. There may also be a need for more litter pick-ups in the future.

The minor boundary adjustment contemplated in the proposed General Management Plan will provide park management with an identifiable boundary (Powder Springs Road) along most of the park's southern edge. However, the park's ability to manage would not be compromised even if no boundary adjustment occurs (alternatives to the proposed General Management Plan).

#### Impacts on the Socioeconomic Environment

Regardless of which alternative or combination of alternatives eventually is adopted, there will be no appreciable economic impacts. Besides a concession operation to shuttle people to the top of Big Kennesaw Mountain, there are no major opportunities for private investment in the park. None of the park's present or proposed programs (minor parking development) would add measurably to regional employment or income.

Adopting a "no action" alternative at the park would be controversial to some interests. Different interests can be expected to object to loss of some recreation opportunities in the park. The proposed General Management Plan should accommodate the needs of all concerned publics.

The proposed General Management Plan would not adversely affect any specific social group. No minority interest groups would be affected. The plan would not affect the religious freedoms of any group of native Americans.

The plan probably would not adversely affect commuter traffic through the park or detract from sound land use decisions in the area. The plan is expected to provide a basis for close and appropriate cooperation with pertinent land use agencies and park neighbors to help protect and preserve park integrity and foster wise use of land resources in the area.



## LIST OF PERSONS AND AGENCIES CONSULTED

The following Federal, State, local and regional agencies, individuals and organizations are among those consulted in the preparation of this General Management Plan/Environmental Assessment or who will be given an opportunity to comment.

### Federal

Fish and Wildlife Service  
Geological Survey  
Bureau of Indian Affairs  
Region IV Secretarial Representative, U.S. Department of  
Transportation  
Environmental Protection Agency  
Advisory Council on Historic Preservation  
Soil Conservation Service

### State

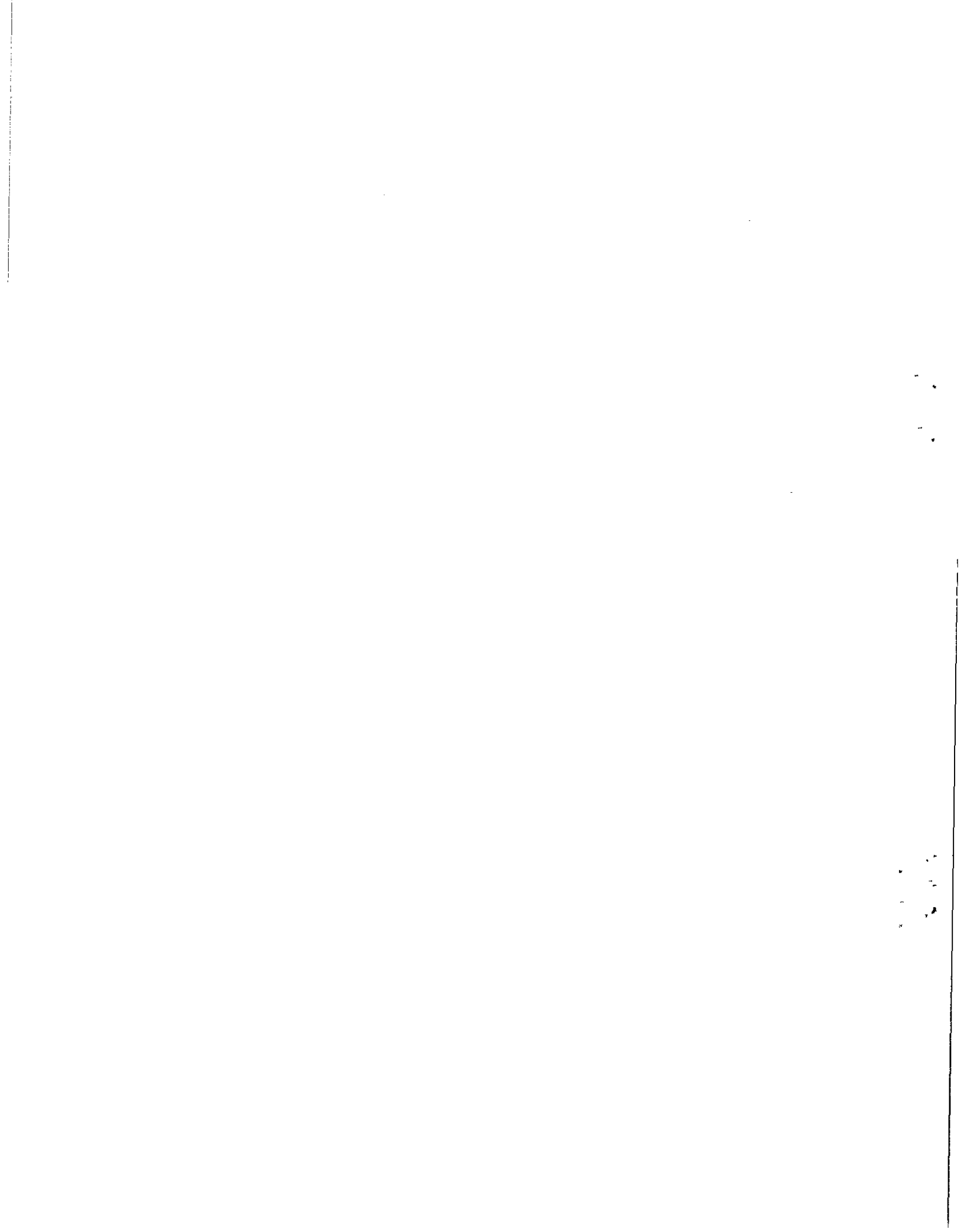
State Historic Preservation Officer  
State Clearinghouse, Office of Planning and Budget

### Local

Regional Clearinghouse, Atlanta Regional Commission  
Cobb County Department of Planning and Engineering  
City Clerk's Office, Kennesaw, Georgia  
Marietta City Hall, Marietta, Georgia

### Organizations

Civil War Round Table  
Kennesaw College  
Park Neighbors  
Georgia Conservancy



APPENDIX A

V. LEGISLATION RELATING TO NATIONAL BATTLEFIELD PARKS

1. Kennesaw Mountain National Battlefield Park

	Page
Authorization for United States Government to accept proposed gift of land on the Kenesaw battlefield from the Kenesaw Memorial Association of Illinois.....Act of February 8, 1917	299
Inspection of Kennesaw Mountain battlefield authorized.....Act of May 21, 1926	299

An Act Authorizing the acceptance by the United States Government from the Kenesaw Memorial Association of Illinois of a proposed gift of land on the Kenesaw battle field in the State of Georgia, approved February 8, 1917 (39 Stat. 901)

*Be it enacted by the Senate and House of Representatives of the United States of America in Congress assembled,* That the Secretary of War be, and he is hereby, authorized and directed to accept from the Kenesaw Memorial Association, a corporation organized under the laws of the State of Illinois, a gift of certain land, with all the improvements thereon, comprising a part of the Kenesaw battle field, said land being described as lot numbered one hundred and sixteen and the east half of lot numbered one hundred and seven in the nineteenth district and second section, in the county of Cobb and State of Georgia, and upon which a monument has been erected to certain organizations that participated in the fighting on Kenesaw Mountain: *Provided,* that no expense shall be incurred by the United States in carrying out the provisions of this Act.

Kenesaw battle field, Ga. Acceptance of land comprising.

*Provido.*  
No expense.

An Act Providing for an inspection of the Kennesaw Mountain and Lost Mountain and other battle fields in the State of Georgia, approved May 21, 1926 (44 Stat. 588)

*Be it enacted by the Senate and House of Representatives of the United States of America in Congress assembled,* That a commission is hereby created, to be composed of the following members, who shall be appointed by the Secretary of War, for the purpose of inspecting the Kennesaw Mountain, Lost Mountain, and other battle fields in the State of Georgia: A commissioned officer of the Corps of Engineers, United States Army; a veteran of the Civil War who served honorably in the military forces of the United States; and a veteran of the Civil War who served honorably in the military forces of the Confederate States of America. In appointing the members of the commission the Secretary of War shall, as far as possible, select persons familiar with the terrain of the said battle fields and the historical events associated therewith.

Kennesaw Mountain, etc., Georgia, battle fields. Commission created to inspect.

Composition.

Basis of selecting members.

300 V. NATIONAL BATTLEFIELD PARKS—KENNESAW MOUNTAIN

Duty of commission.

Report of findings.

Amount authorized for expenses.  
Post, p. 878.

SEC. 2. It shall be the duty of the commission, acting under the direction of the Secretary of War, to inspect the said battle fields in order to ascertain the feasibility of their acquisition for the purpose of a national military park and of preserving and marking them for historical and professional military study and to ascertain the value of lands necessary to acquire for this purpose. The commission shall submit a report of its findings to the Secretary of War not later than November 1, 1926.

SEC. 3. There is authorized to be appropriated, out of any money in the Treasury not otherwise appropriated, the sum of \$5,000 in order to carry out the provisions of this Act.

V. LEGISLATION RELATING TO THE NATIONAL BATTLEFIELD PARKS

1. Kennesaw Mountain National Battlefield Park project

	Page
Establishment of park authorized.....Act of June 26, 1935	123
Amend Act of June 26, 1935, acquisition of additional land authorized .....Act of August 9, 1939	124

An Act To create a national memorial military park at and in the vicinity of Kennesaw Mountain in the State of Georgia, and for other purposes, approved June 26, 1935 (49 Stat. 423)

*Be it enacted by the Senate and House of Representatives of the United States of America in Congress assembled,*

That when title to all the lands, structures, and other property within the military battlefield area and other areas of Civil War interest at and in the vicinity of Kennesaw Mountain in the State of Georgia, as shall be designated by the Secretary of the Interior, in the exercise of his discretion, as necessary or desirable for national battlefield park purposes, shall have been vested in the United States, such areas shall be, and they are hereby, established, dedicated, and set apart as a public park for the benefit and inspiration of the people and shall be known as the "Kennesaw Mountain National Battlefield Park." (16 U.S.C. sec. 430t.)

Kennesaw Mountain National Battlefield Park, Ga.  
Establishment: condition.

SEC. 2. That the Secretary of the Interior be, and he is hereby, authorized to accept donations of land, interests in land, buildings, structures, and other property within the boundaries of said national battlefield park as determined and fixed hereunder, the title and evidence of title to lands purchased to be satisfactory to the Secretary of the Interior: *Provided*, That under such funds available therefor he may acquire on behalf of the United States by purchase when purchasable at prices deemed by him reasonable, otherwise by condemnation under the provisions of the Act of August 1, 1888, such tracts of land within the said national battlefield park as may be necessary for the completion thereof. (16 U.S.C. sec. 430u.)

Acceptance of donations, etc.

SEC. 3. Upon creation of the national battlefield park the Secretary of the Interior shall—

(a) Allow monuments and memorials to be erected in the park by and to the various organizations and individuals of either the Union or Confederate Armies, subject to the written approval of said Secretary as to the location and character of such monuments and memorials.

Erection of monuments, etc.

(b) Make such regulations as are necessary from time to time for the care and protection of the park. Any person violating such regulations shall be guilty of an offense

Regulations.

Punishment for violations.

Marking battle lines, etc.

National Park Service to administer, etc.

111

Appropriation authorized.

Inconsistent Acts repealed.

Kennesaw Mountain National Battlefield Park, Ga.  
49 Stat. 424.

Proviso.

Acquisition of additional lands authorized.

Appropriation authorized.

New Salem School district, Dade County, Ga., conveyance of land.

punishable by a fine of not more than \$500, or imprisonment not exceeding six months, or both.

(c) Provide for the ascertainment and marking of the route of march of the Union and Confederate armies from Chattanooga, Tennessee, through Georgia, and of principal battle lines, breastworks, fortifications, and other historical features along such route, and for the maintenance of such markers to such extent as deemed advisable and practicable. (16 U.S.C. sec. 430v.)

SEC. 4. That the administration, protection, and development of the aforesaid national battlefield park shall be exercised under the direction of the Secretary of the Interior by the National Park Service subject to the provisions of the Act of August 25, 1916, entitled "An Act to establish a National Park Service, and for other purposes", as amended. (16 U.S.C. sec. 430w.)

SEC. 5. The sum of \$100,000 is hereby authorized to be appropriated out of any sums in the Treasury not otherwise appropriated for the purposes herein designated. (16 U.S.C. sec. 430x.)<sup>1</sup>

SEC. 6. All Acts of parts of Acts inconsistent with the provisions of this Act are hereby repealed to the extent of such inconsistency.

An Act To amend the Act approved June 26, 1935, entitled "An Act to create a national memorial military park at and in the vicinity of Kennesaw Mountain in the State of Georgia, and for other purposes," approved August 9, 1939 (53 Stat. 1274)

*Be it enacted by the Senate and House of Representatives of the United States of America in Congress assembled,* That section 5 of the Act approved June 26, 1935, entitled "An Act to create a national memorial military park at and in the vicinity of Kennesaw Mountain in the State of Georgia, and for other purposes", be, and the same is hereby, amended by striking the period at the end thereof and inserting a colon and the following proviso: "Provided, That if, after the expenditure of the funds herein authorized, the Secretary of the Interior shall determine that the acquisition of additional lands is necessary in order to perfect the symmetry of the park area or to acquire locations of historic interest adjacent to the park area already acquired upon which fortifications or entrenchments are located which are likely to deteriorate or be destroyed under private ownership, he is authorized to acquire additional lands for such purposes." (16 U.S.C. sec. 430x.)

SEC. 2. There is hereby authorized to be appropriated to carry out the purposes of this Act not to exceed the sum of \$55,000. (16 U.S.C. sec. 430x note.)

SEC. 3. That the Secretary of the Interior, in his discretion, is hereby authorized to convey without consideration, but under such terms and conditions as he may deem

<sup>1</sup> Section 5 amended by Act of August 9, 1939, immediately following.

advisable, to the New Salem School district of Dade County, Georgia, not to exceed ten acres of land located within lot numbered 114, eleventh district, fourth section, of Dade County, Georgia, now a part of the Chickamauga-Chattanooga National Military Park.

## APPENDIX

1. Reorganization of Government, excerpts from Executive Order No. 6166 of June 10, 1933 (5 U.S.C. secs. 124-132).

# Executive Order

## ORGANIZATION OF EXECUTIVE AGENCIES

WHEREAS section 16 of the act of March 3, 1933 (Public, No. 428, 47 Stat. 1517), provides for reorganizations within the executive branch of the Government; requires the President to investigate and determine what reorganizations are necessary to effectuate the purposes of the statute; and authorizes the President to make such reorganizations by Executive order; and

WHEREAS I have investigated the organization of all executive and administrative agencies of the Government and have determined that certain regroupings, consolidations, transfers, and abolitions of executive agencies and functions thereof are necessary to accomplish the purposes of section 16;

NOW, THEREFORE, by virtue of the aforesaid authority, I do hereby order that:

### SECTION 2.—*National Parks, Buildings, and Reservations*

All functions of administration of public buildings, reservations, national parks, national monuments, and national cemeteries are consolidated in an Office of National Parks, Buildings, and Reservations<sup>1</sup> in the Department of the Interior, at the head of which shall be a Director of National Parks, Buildings, and Reservations; except that where deemed desirable there may be excluded from this provision any public building or reservation which is chiefly employed as a facility in the work of a particular agency. This transfer and consolidation of functions shall include, among others, those of the National Park Service of the Department of the Interior and the National Cemeteries and Parks of the War Department which are located within the continental limits of the United States. National cemeteries located in foreign countries shall be transferred to the Department of State, and those located in insular possessions under the jurisdiction of the War Department shall be administered by the Bureau of Insular Affairs of the War Department.

The functions of the following agencies are transferred to the Office of National Parks, Buildings, and Reservations of the Department of the Interior, and the agencies are abolished:

Arlington Memorial Bridge Commission

Public Buildings Commission

Public Buildings and Public Parks of the National Capital

National Memorial Commission

Rock Creek and Potomac Parkway Commission

<sup>1</sup> "National Park Service" was substituted for "Office of National Parks, Buildings, and Reservations" by Act of March 2, 1934 (48 Stat. 389), see excerpt, page 13.



Expenditures by the Federal Government for the purposes of the Commission of Fine Arts, the George Rogers Clark Sesquicentennial Commission, and the Rushmore National Commission shall be administered by the Department of the Interior.

\* \* \* \* \*

SECTION 19.—*General Provisions*

Each agency, all the functions of which are transferred to or consolidated with another agency, is abolished.

The records pertaining to an abolished agency or a function disposed of, disposition of which is not elsewhere herein provided for, shall be transferred to the successor. If there be no successor agency, and such abolished agency be within a department, said records shall be disposed of as the head of such department may direct.

The property, facilities, equipment, and supplies employed in the work of an abolished agency or the exercise of a function disposed of, disposition of which is not elsewhere herein provided for, shall, to the extent required, be transferred to the successor agency. Other such property, facilities, equipment, and supplies shall be transferred to the Procurement Division.

All personnel employed in connection with the work of an abolished agency or function disposed of shall be separated from the service of the United States, except that the head of any successor agency, subject to my approval, may, within a period of four months after transfer or consolidation, reappoint any of such personnel required for the work of the successor agency without reexamination or loss of civil-service status.

SECTION 20.—*Appropriations*

Such portions of the unexpended balances of appropriations for any abolished agency or function disposed of shall be transferred to the successor agency as the Director of the Budget shall deem necessary.

Unexpended balances of appropriations for an abolished agency or function disposed of, not so transferred by the Director of the Budget, shall, in accordance with law, be impounded and returned to the Treasury.

SECTION 21.—*Definitions*

As used in this order—

“Agency” means any commission, independent establishment, board, bureau, division, service, or office in the executive branch of the Government.

“Abolished agency” means any agency which is abolished, transferred, or consolidated.

“Successor agency” means any agency to which is transferred some other agency or function, or which results from the consolidation of other agencies or functions.

“Function disposed of” means any function eliminated or transferred.

SECTION 22.—*Effective Date*

In accordance with law, this order shall become effective 61 days from its date; *Provided*, That in case it shall appear to the President that the interests of economy require that any transfer, consolidation, or elimination be delayed beyond the date this order becomes effective, he may, in

his discretion, fix a later date therefor, and he may for like cause further defer such date from time to time.

FRANKLIN D. ROOSEVELT.

THE WHITE HOUSE,  
June 10, 1933.

[No. 6166]

2. Reorganization of Government, Executive Order No. 6228 of July 28, 1933, to make more explicit and to interpret Section 2 of Executive Order No. 6166 of June 10, 1933 (5 U.S.C. secs. 124-132)

## Executive Order

### ORGANIZATION OF EXECUTIVE AGENCIES

WHEREAS executive order No. 6166 dated June 10, 1933, issued pursuant to the authority of Section 16 of the Act of March 3, 1933 (Public No. 428—47 Stat. 1517) provides in Section 2 as follows:

"All functions of administration of public buildings, reservations, national parks, national monuments, and national cemeteries are consolidated in an office of National Parks, Buildings, and Reservations in the Department of the Interior, at the head of which shall be a Director of National Parks, Buildings, and Reservations; except that where deemed desirable there may be excluded from this provision any public building or reservation which is chiefly employed as a facility in the work of a particular agency. This transfer and consolidation of functions shall include, among others, those of the National Park Service of the Department of the Interior and the National Cemeteries and Parks of the War Department which are located within the continental limits of the United States. National Cemeteries located in foreign countries shall be transferred to the Department of State, and those located in insular possessions under the jurisdiction of the War Department shall be administered by the Bureau of Insular Affairs of the War Department."

and;

WHEREAS to facilitate and expedite the transfer and consolidation of certain units and agencies contemplated thereby, it is desirable to make more explicit said Section 2 of the aforesaid executive order of June 10, 1933, insofar as the same relates to the transfer of agencies now administered by the War Department:

NOW, THEREFORE, said executive order No. 6166, dated June 10, 1933, is hereby interpreted as follows:

1. The cemeteries and parks of the War Department transferred to the Interior Department are as follows:

## NATIONAL MILITARY PARKS

Chickamauga and Chattanooga National Military Park, Georgia and Tennessee.  
 Fort Donelson National Military Park, Tennessee.  
 Fredericksburg and Spotsylvania County Battle Fields Memorial, Virginia.  
 Gettysburg National Military Park, Pennsylvania.  
 Guilford Courthouse National Military Park, North Carolina.  
 Kings Mountain National Military Park, South Carolina.  
 Moores Creek National Military Park, North Carolina.  
 Petersburg National Military Park, Virginia.  
 Shiloh National Military Park, Tennessee.  
 Stones River National Military Park, Tennessee.  
 Vicksburg National Military Park, Mississippi.

## NATIONAL PARKS

Abraham Lincoln National Park, Kentucky.  
 Fort McHenry National Park, Maryland.

## BATTLEFIELD SITES

Antietam Battlefield, Maryland.  
 Appomattox, Virginia.  
 Brices Cross Roads, Mississippi.  
 Chalmette Monument and Grounds, Louisiana.  
 Cowpens, South Carolina.  
 Fort Necessity, Wharton County,<sup>2</sup> Pennsylvania.  
 Kenesaw Mountain, Georgia.  
 Monocacy, Maryland.  
 Tupelo, Mississippi.  
 White Plains, New York.

## NATIONAL MONUMENTS

Big Hole Battlefield, Beaverhead County, Montana.  
 Cabrillo Monument, Ft. Rosecrans, California.  
 Castle Pinckney, Charleston, South Carolina.  
 Father Millet Cross, Fort Niagara, New York.  
 Fort Marion, St. Augustine, Florida.  
 Fort Matanzas, Florida.  
 Fort Pulaski, Georgia.  
 Meriwether Lewis, Hardin County, Tennessee.  
 Mound City Group, Chillicothe, Ohio.  
 Statue of Liberty, Fort Wood, New York.

## MISCELLANEOUS MEMORIALS

Camp Blount Tablets, Lincoln County, Tennessee.  
 Kill Devil Hill Monument, Kitty Hawk, North Carolina.  
 New Echota Marker, Georgia.  
 Lee Mansion, Arlington National Cemetery, Virginia.

<sup>2</sup> Wharton Township, Fayette County.

## NATIONAL CEMETERIES

Battleground, District of Columbia.  
Antietam, (Sharpsburg) Maryland.  
Vicksburg, Mississippi.  
Gettysburg, Pennsylvania.  
Chattanooga, Tennessee.  
Fort Donelson, (Dover) Tennessee.  
Shiloh, (Pittsburg Landing) Tennessee.  
Stones River, (Murfreesboro) Tennessee.  
Fredericksburg, Virginia.  
Poplar Grove, (Petersburg) Virginia.  
Yorktown, Virginia.

2. Pursuant to Section 22 of said executive order it is hereby ordered that the transfer from the War Department of national cemeteries other than those named above be, and the same is hereby postponed until further order.

3. Also pursuant to Section 22 of said executive order it is hereby ordered that the transfer of national cemeteries located in foreign countries from the War Department to the Department of State and the transfer of those located in insular possessions under the jurisdiction of the War Department to the Bureau of Insular Affairs of said Department be, and the same are hereby postponed until further order.

FRANKLIN D. ROOSEVELT.

THE WHITE HOUSE,  
July 28, 1933.

[No. 6228]

★ 890562-44

MANAGEMENT OBJECTIVES

To incorporate the Kennesaw battlefields within an appropriate park boundary that facilitates their long-term preservation and interpretation of their significance in Civil War history.

Monitor the condition of historic resources and other government facilities and to restrict public use, modify maintenance and management practices, and otherwise eliminate conditions having adverse effects on them.

To facilitate leisurely, uncongested circulation of visitors within the park in ways that ensure conservation of energy and presentation of the park's natural and cultural resources.

To ensure that all nonhistoric structures within the park are visually compatible with each other and with the historic scene.

To cooperate with outside agencies, organizations, and members of the public for the purpose of assuring, to the greatest extent possible, that adjacent lands are developed in ways that are compatible with preserving the park's earthworks, historic structures, and the integrity of the historic scene; heightening public awareness of the area's unique heritage and the need for historic preservation in and around the park.

To protect and preserve, and where appropriate and practicable to stabilize, restore or rehabilitate the historic resources in the park.

Coordinate research and management efforts to identify and apply actions necessary to restore and/or perpetuate desirable environmental conditions as contemplated in the policies for the management of historical zones.

To enable visitors to gain insight into the park's unique cultural and historical significance through a varied and balanced interpretive program that focuses on the Battle of Kennesaw Mountain and its significance to the Atlanta Campaign of the Civil War and the ultimate outcome of the War itself.

## KENNESAW MOUNTAIN ANNUAL VISITATION (1972 - 1982)

Recreational  
Visits in  
Thousands (000)

