



# Welcome to Lake Mead National Recreation Area

Lake Mead National Recreation Area (Lake Mead NRA) provides a wide variety of unique outdoor recreation opportunities ranging from warm- water recreation to exploration of rugged and isolated backcountry.

## Black Canyon

Below Hoover Dam, rugged rock walls rise 800 feet above the Colorado River. Millions of years ago the river sliced its way through the hard, dark volcanic rock to form what is now known as Black Canyon. The rock is so hard, in fact, that in the 1930s the engineers and surveyors decided it would be the best spot to build Hoover Dam. Today Black Canyon is a serene and beautiful natural setting that is home to desert wildlife such as the desert bighorn sheep.

The Colorado River below Hoover Dam actually forms the northern end of Lake Mohave, but the steep and narrow canyon and fast moving water still give it the feel of a river. Not only is Black Canyon an ideal area for fishing, it also is popular for paddling kayaks and canoes and taking river raft tours. There are several sandy beaches along the river that are perfect to stop and picnic, but please remember to pack out everything you pack in.

Swimming is not recommended in Black Canyon because the swift moving water averages 53 ° F. year- round, even when the air temperature is above 100 ° F. Kayak and canoe paddlers must wear a life jacket while on the water.

To allow for a wide variety of recreational opportunities in this unique spot, the following regulations are in effect for Black Canyon (from Willow Beach to Hoover Dam):



Black Canyon. For more detail of the park, please see map on pg. 8

All year on Sundays and Mondays, Black Canyon will be managed as a *primitive zone* meaning that personal watercraft (PWCs) and motorized vessels are not allowed in the canyon. This time gives kayakers, canoeists and other motor- less recreationists an opportunity to enjoy the canyon in a natural setting.

On Tuesdays through Saturdays during the busy summer season, between the Saturday of Memorial Day and Labor Day, Black Canyon will be managed as a *rural- natural zone*, which means

there will be no restrictions on PWCs and motorized vessels on those designated days of the week. Remember, Sundays and Mondays continue to be managed as a *primitive zone*. Houseboating, water- skiing, and wakeboarding remain prohibited for safety reasons because of the narrow canyon environment.

On Tuesdays through Saturdays, after Labor Day, Black Canyon will be managed as a *semi- primitive zone*, meaning that PWCs are not permitted and boating is restricted to vessels with 65- horsepower engines or less.

If you have any questions, please see a ranger at Willow Beach or call our visitor center at 702.293.8990.

**Starting Saturday, May 29, 2004, there will be no restrictions on PWCs and motorized vessels (Tuesday through Saturday) in Black Canyon until after Monday, September 6, 2004. Remember that Sundays and Mondays in Black Canyon will continue to be managed as a *primitive zone* and no PWCs or motorized vessels are allowed.**

**From Monday, September 6, 2004 until the following Memorial Day weekend in 2005, Black Canyon will be managed as a *semi- primitive zone* with PWC and vessel restrictions. Sundays and Mondays continue to be managed as a *primitive zone*, meaning no motorized vessels.**

## In this issue:





National Park Service  
U.S. Department of the Interior



Lake Mead National Recreation Area  
(Lake Mead NRA)

Established in 1964 as the nation’s first national recreation area, Lake Mead NRA encompasses over 1.4 million acres ranging in elevation from 517 feet to 6,990 feet above sea level. Lake Mead and Lake Mohave stretch 140 miles along the old Colorado River channel following the Nevada and Arizona borders. Lake Mead NRA receives approximately 8 to 10 million visitors annually.

Contact Information

Park Phone Number  
702.293.8907

Mailing Address  
601 Nevada Way  
Boulder City, NV 89005

E-mail  
LAME\_information@nps.gov

Fax Number  
702.293.8936

Website  
www.nps.gov/lame

*The National Park Service cares for the special places saved by the American people so that all may experience our heritage.*



# Fun at the Lake!

There are a wide range of recreational activities available to visitors on Lakes Mead and Mohave. All nine marinas in the park are open and have many services ranging from great places to have a meal to various boat rental options. You can also make reservations for a boat tour. Fishing and camping opportunities abound. Personal watercraft are allowed on 95 percent on Lakes Mead and Mohave. Additional information on

activities, services and facilities at Lake Mead can be found on our website: [www.nps.gov/lame](http://www.nps.gov/lame) or on the concessioners website: [www.funonthelake.com](http://www.funonthelake.com).

Due to lowering water levels, boaters need to be careful when launching their vessels and should watch for emerging reefs, sandbars, and other hazards.

# Thank You Volunteers

Each year, volunteers contribute thousands of hours to the National Park Service. Volunteers bring special skills, dedication, and a fresh approach to our park operations in areas such as interpretation, visitor protection, maintenance, administration and resource management.

Congratulations to the recipients of the *President's Volunteer Service Award* for 4000 hours or more of volunteer service to Lake Mead National Recreation Area.



- |                    |                     |
|--------------------|---------------------|
| Wanda Alexander    | Betty Heckethorn    |
| Christina Anderson | Earl Heckethorn     |
| Lillian Beach      | Bernard Knapp       |
| Melvin Beach       | Helen Lang          |
| Earnestine Bronson | J.R. Lang           |
| Robert Bronson     | Dona LeNoue         |
| Fred DeSilva       | Fineley Gene Waffle |
| Vernon Drake       |                     |

## Desert Lake View

Editor and Layout:  
Leslie Paige

Contributors to this issue:

Nancy Bernard, Roxanne Dey,  
Dr. Jennell Miller, Mark Robinson,  
and Ann Wisdom

Publication of the Desert Lake View was made possible by user fees collected through the National Park Service Fee Demonstration Program at Lake Mead NRA



**Do not feed wildlife.**  
**Your handouts can**  
**cause sickness**  
**and death to our**  
**native wildlife.**



**Leave 'em alone!**



Wanda Alexander has donated over 18,000 hours of her time landscaping the Boulder Campground!

We would also like to thank the following individuals who have recently donated 500 or more hours in volunteer service to Lake Mead National Recreation Area.

- |                    |                       |
|--------------------|-----------------------|
| Wanda Alexander    | Andi Kraft            |
| Fred Arellano      | James Kreimer         |
| Carol Ashby        | JR Lang               |
| Karin Bencala      | Dona LeNoue           |
| Leah Bonstead      | Josephine Leuci       |
| Earnestine Bronson | Charles McCown        |
| Robert Bronson     | Lauren Murphy         |
| Francine Byers     | Molly O'Sullivan      |
| Brian Colleran     | David Oles            |
| Phyllis Coumbs     | Kay Oles              |
| Richard Delude     | Leonard Oles          |
| Rosalyn Delude     | Gladys Oles           |
| Geraldine Domingo  | Elizabeth Powell      |
| Scott Egy          | Paul Schwartz         |
| Dawn Fletcher      | Adelino Souza         |
| William Forshey    | Paul Timperly         |
| Bernice Fuehrer    | Lee Vallette          |
| Stephen Gushue     | Stephanie Velasquez   |
| David Hall         | Cristina Velez        |
| Hope Herron        | Mary Louise Waltering |
| Josh Hoines        | Shannon Wohl          |
| Robert Houseman    |                       |
| Donald Huddleston  |                       |
| Joseph Hutcheson   |                       |
| Barbara Karger     |                       |

*Thanks!*





# Latest on Lake Mead Launch Ramps



A large- scale capital improvement project funded with park entrance fees to improve the launch ramps on Lake Mead began this summer and continues this winter. "We are taking full advantage of the opportunity that lowering water levels at Lake Mead are providing for the launch ramp reconstruction project," said Superintendent William K. Dickinson. "The sections of the launch ramps exposed were under water for almost 40 years. This caused crumbling and deterioration of the asphalt. Replacement of these launch ramps significantly improves conditions for boaters using these Lake Mead facilities," added Dickinson. Half of the funding came from park entrance fees. The other fifty percent of the funding came from three sources: the Southern Nevada Public Lands Management Act, the state of Nevada, and the state of Arizona.

The current launch ramps conditions at Lake Mead are:

**Hemenway Harbor**  
Hemenway Harbor is only open for shallow launching. Please be advised the National Park Service has a major rehabilitation project underway at this ramp. Superintendent Dickinson stressed, "I want to assure visitors to Hemenway Harbor that at least 1- 2 shallow launching lanes will remain open during construction. No construction work will be done on weekends or holidays."

The Hemenway Point fishing pier was relocated into Horsepower Cove south of the Las Vegas Boat Harbor Marina earlier this year.

**Boulder Harbor Launch Ramp**  
(next to Lake Mead Marina)  
An alternative launch ramp with four to five lanes.

**Las Vegas Bay Launch Ramp** was closed December 15, 2003. The campground, fish cleaner, and picnic area remain open and available to serve visitors. The area is also open for shoreline fishing. The closure was necessary due to lowering water levels and the rapid movement of an expansive delta front generated from erosion in the Las Vegas Wash. The courtesy dock was also removed. In October 2002, lowering water levels and the growing delta caused the Las Vegas Bay Marina to relocate to the Horsepower Cove area of Hemenway Harbor. The marina operation is now known as the Las Vegas Boat Harbor.

**Government Wash and Pearce Ferry launch ramps remain closed.**

**Callville Bay**  
Eight launch lanes are open and the ramp is suitable for deep water launching. There is a lengthy walk from the parking areas to the launch ramp. The concessioneer offers free shuttle service.

**Echo Bay**  
Four launch lanes on the south are open for all size boats. The parking areas are marked; please do not park on the launch ramp.

**Overton Beach**  
There are four lanes open for launching, two of them are for deep water launching.

**South Cove**  
Four launch lanes are open and the ramp is suitable for deep water launching.

**Temple Bar**  
Two launch lanes are open and suitable for deep water launching on the west side of the ramp. Three to four launch lanes are available for PWC and shallow boat launching. There is typically no waiting line for launching and there is abundant parking. The concessioner offers free shuttle service for those parking in more remote locations.

All launch ramps on Lake Mohave are open and operational.



Launchramp repairs on Lake Mead



## TIPS for boaters

Most boaters on Lakes Mead and Mohave take pride in their boats. Many boats glisten in the sunlight because the owner takes the time to wax the fiberglass, polish the teak, or buff out the chrome. But what about safety equipment? Did it get checked before going out for the day? Use these five easy safety checks to be sure your boat is ship- shape.

**Make sure lifejackets fit the intended user and are in good and serviceable condition.** Each person on board your boat must have a life jacket that fits properly! Straps and buckles should secure properly. Make sure there are no

rips in the material of your lifejacket. Also check your life ring or throwable cushion for rips and other signs of wear.

**Check the date on flares and other visual distress signals.** Have visual distress signals for both day and night use. Visual distress signals are intended to catch someone’s attention in an emergency situation. Remember, they are not toys and can be dangerous if misused.

**Check your fire extinguisher by inspecting the hose for powder residue.** Read the gage to determine if it is properly charged. Gently rock the extinguisher back and forth to feel if the powder is loose. If it is not, gently tap the extinguisher with a rubber mallet or take it in for servicing.

**Check your running lights.** Make sure they are in operating condition. You never know when you

might become stuck on the lake after dark. While checking your lights, don’t forget to check your flashlight. A dead flashlight can’t help you when you need it most.

**Inspect your lines.** Lines that are left out in the sun will rot and can be too stiff to use. You want to be prepared if you need a tow and the assisting boat has no tow lines. Also, check your anchor line. Anchors are rarely used, except in an emergency. It could be disastrous if the anchor sank because the anchor line was not securely tied or was in poor condition.

Take as much pride in your gear as you do with your boat. It only takes a few minutes to check your boat’s equipment and to make sure it is in proper working order.

Your equipment could save your life!





# Save the Nevada Smoketree

As one of the parks in the National Park System, Lake Mead National Recreation Area is in charge of preserving the pristine nature of the park's natural resources for future generations. Nevada Telephone Cove, west of Katherine's Landing, has seen an increase in visitation during the summer months and a decrease in one of our most rare and unusual plants, the Smoketree. The Smoketree population is limited to an area of approximately ten acres and is the only population of Smoketree in the state of Nevada.

The Smoketree goes dormant in late spring and summer, looking dead to those who are unfamiliar with its patterns. During 2002, we began to notice a number of trees with missing limbs or the tree was missing all together. There was evidence that people, either chopping down trees for firewood or removing them by pulling them from the ground using cars and ropes had removed the missing trees. What many may not know is that it is illegal to collect wood on National Park property and a \$500 fine could be issued. The Smoketree grows very slowly, does not appear to grow vigorously in this area, and the trees are being damaged faster than they can reproduce. Given the small number of individuals in this population, continued loss could cause local extinction in Nevada, unless the area is protected. **Please help us to protect the Smoketree of Nevada by respecting the newly constructed barriers. Each and every one of us can make a difference.**

We are excited about this most recent accomplishment, but would not have been able to complete the project without the hard work and organization of the Rare Plant Program, the National Park Service Restoration Crew, and the

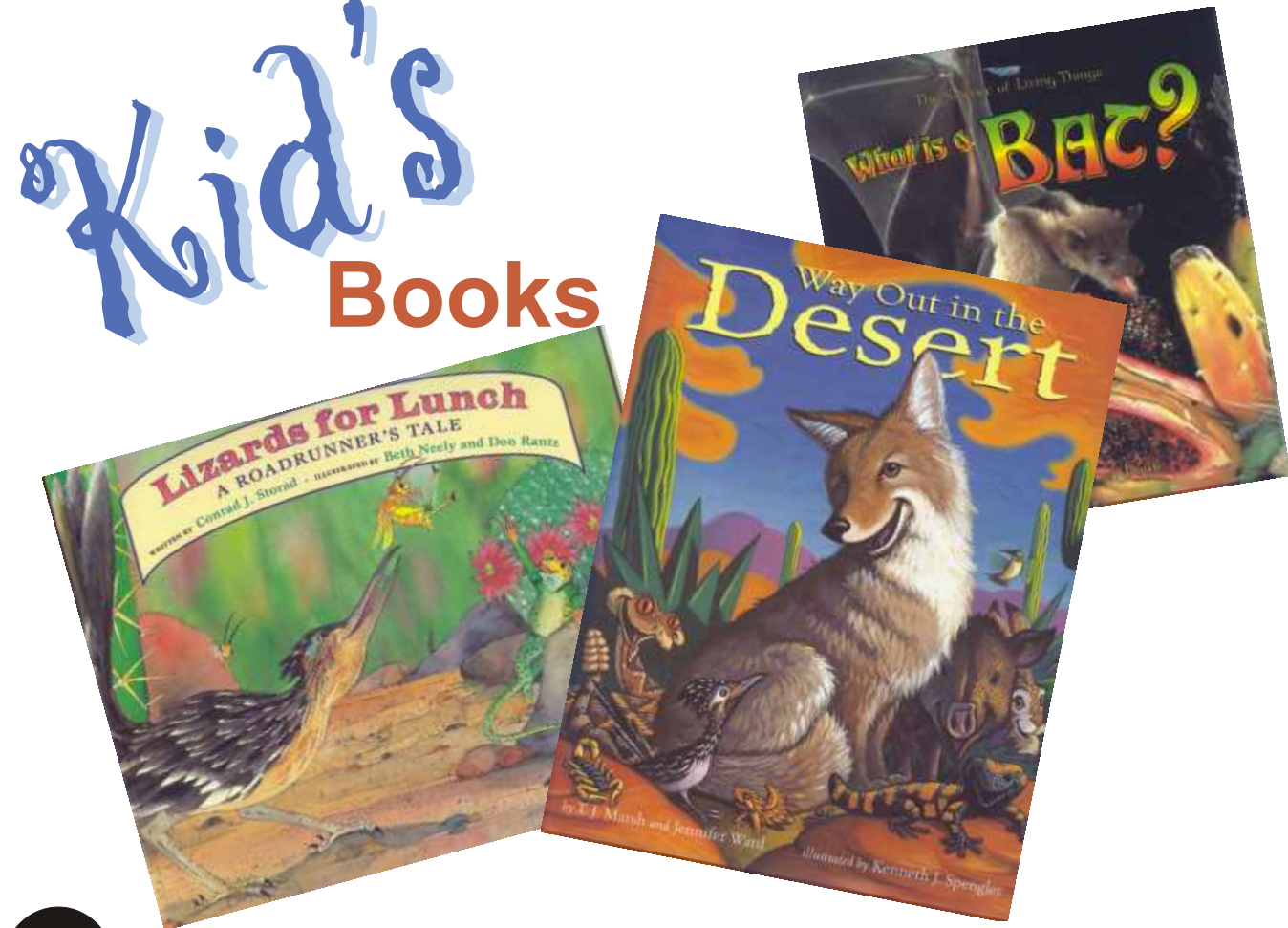


Smoketree at Nevada Telephone Cove on Lake Mohave

Nevada Conservation Corps. They worked for a week to set over 700 posts made from recycled telephone poles, string 8,200 feet of cable, and posted "Don't Bust the Crust" and "Restoration in Progress" signs to protect the rare Smoketree of Nevada.

Additional improvements have been proposed at Nevada Telephone Cove and with funding, projects such as the development of an informational kiosk and possibly a primitive campground can be completed. We have hope that the area will provide easy access to the lake for visitors and continue to stay beautiful for visitors who plan to come in the following years.

## Kid's Books



These are just a few of the great children's books available at the Lake Mead Visitor Center. The Lake Mead Visitor Center is located four miles northeast of Boulder City on U.S. Highway 93 and Lakeshore Scenic Drive.

*Lizards for Lunch - A Roadrunner's Tale*  
by Conrad J. Storad  
Told in rhythmic verse and containing wonderful water color illustrations of desert nature scenes, this book introduces many facts about roadrunners in a way that children will love and not soon forget.

*Way Out in the Desert*  
by Jennifer Ward  
A delightful take-off on "Over in the Meadow." The familiar pond animals are replaced with the horned toads, hummingbirds, javelinas, jackrabbits, and roadrunners of the Sonoran Desert. The joyous, humor-filled drawings at times border on cartoons. Even rattlers and Gila monsters look appealing.

*What is a Bat?*  
by Bobbie Kalman  
From blood-sucking vampire bats to mango-eating fruit bats, What is a Bat? tackles bat myths and teaches children about their hibernation, reproduction, migration, habitats, and bat communication.





# Camping Info

## Fees

Campground fees are \$10 per site (\$5 with Golden Age and Golden Access passes) and are payable immediately upon occupying a campsite. Sites are available on a first- come, first- served basis. There are no reservations. No hookups available. **Check- out time is noon.**

## Site Capacity

Maximum eight persons and two motorized vehicles (e.g., one camping unit and a towed vehicle) per site. Four motorcycles may occupy a site. Motor vehicles must be parked in designated parking areas only and may not be driven onto the dirt or across irrigation ditches.

## Maximum Stay

Maximum stay within the recreation area is limited to 90 days within any consecutive 12- month period.

## Quiet Hours

Quiet hours are **10 p.m. to 6 a.m.** Please do not create or sustain unreasonable noise, including generators, during those hours.

## Group Camping

Group campsites are located at the Boulder Beach campground. Fees are \$30 per night and up to 30 people per site. Please pay at the campground kiosk. Reservations are required. Please call (702) 293- 8505. Drinking water is available at the blue faucets.

## Water Use

Please wash dishes at your campsite and not at the water faucets. Do not drain contaminated water on the ground. Use the service sink at the comfort



station. **Do not wash any vehicles in the campground.** Dump holding tanks at sanitary stations located at each campground. Except for filling storage tanks, do not connect hoses to water faucets.

## RV Sites with Full Hookups

Park concessioners provide RV sites with full hookups (electric, water and sewage) at Lakeshore Trailer Village (Boulder Beach), Callville Bay, Echo Bay, Overton Beach, Cottonwood Cove, Temple Bar, and Katherine Landing. Reservations may be made by contacting the concessioners.

## Fires

Do not leave fires unattended. Driftwood may be collected from below the high water line only and used in campfires. Firewood may also be purchased at concession stores. Ground fires are permitted only in metal fire rings provided in some of the sites.

## Wildlife

Please do not feed the wildlife! Animals can become dependent on handouts of food and lose their fear of humans. This is dangerous for the wildlife and you. All plants, animals and natural features are protected in national parks.

## Pets

Pets must be kept at all times on a leash not to exceed six- feet in length and should not be left unattended. Barking dogs are considered a nuisance. Owners must remove them from the campground. Never leave your pet in a closed vehicle. Temperatures can soar to 130 degrees F (54 degrees C) in minutes. Your pet can quickly die of heat stroke in those conditions. Don’t forget to clean up after your pet.

## Property

Leaving property unattended for longer than 24 hours is prohibited unless authorized in writing by the Superintendent.

## General Rules

- Do not attach wires, ropes or nails to trees or shrubs.
- Digging, leveling, or other alterations of the ground is not permitted.
- Be aware of extreme summer heat when leaving children or pets in vehicles or trailers. Never leave them in a closed vehicle.
- Secure all valuables. Do not leave them in your campsite when you are not there, even



# Entrance and Lake Use Fees

Vehicle	annual pass	\$20 (covers all passengers)
Second Vehicle	annual pass	\$10 each additional vehicle
Vehicle	1-5 days	\$5 per vehicle (covers all passengers)
Individual	annual pass	\$20 per annual pass (motorcycle, bicycles etc.)
Individual	1-5 days	\$3 per person (motorcycle, bicycles, hikers)
Golden Age Passport	lifetime	\$10 US residents age 62 or older
Golden Access Passport	lifetime	Free - medically determined to be permanently disabled.
National Parks Pass		\$50 valid for one year from month purchased
Vessel	annual pass	\$20 first vessel
Vessel	annual pass	\$10 each additional vessel
Vessel	1-5 days	\$10 first vessel
Vessel	1-5 days	\$ 5 each additional vessel





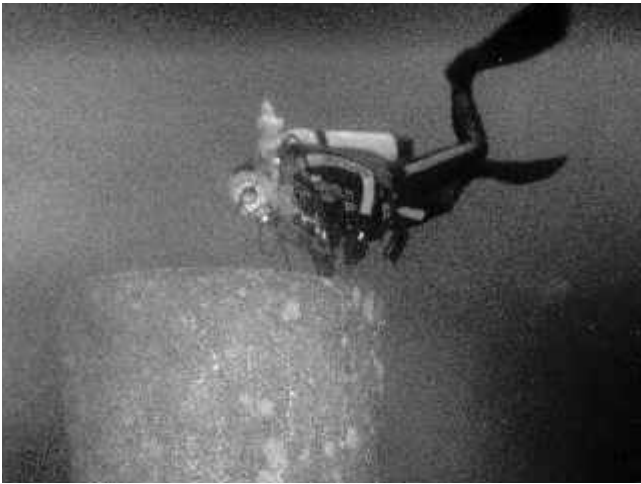


# Scuba Diving at Lake Mead



Scuba diving in Lakes Mead and Mohave has been a recreational activity enjoyed by many locals and visitors for over 40 years. Both lakes provide a variety of scuba diving environments for both the novice and the advanced diver. Great diving areas are accessible by car as well as by boat. Lake temperatures vary with the air temperature and can reach into the 80s (from surface level to 30 feet) during the summer. Clarity of the water also varies depending on the water temperature and winds.

Diving locations accessible by boat: Boulder Island, across from Hemenway Harbor, has been a long- time favorite diving spot. During the construction of Hoover Dam a large concrete tank was constructed for separating aggregate to use in the mixing of concrete. This tank was submerged when the lake was filled. Due to current low water elevations the tank is within reach of a scuba diver. Divers are not permitted to remove anything from the site, so take only pictures of this submerged historical site. There are also several intentionally sunken boats in the area waiting to be explored.



Scuba diving on the 'batch plant' near Boulder Island

Ringbolt Rapids is an exciting 100- yard drift dive suitable for advanced divers. Ringbolt Rapids is located approximately four miles below Hoover Dam in Black Canyon (northern Lake Mohave), which is accessible by boat from Willow Beach. Be aware that the water below the dam averages a cold 53° F year round and does not vary with air temperature.

Wishing Well Cove, located in Boulder Canyon on Lake Mead, is another popular dive spot known for its steep drop- offs and excellent visibility. Cathedral Cove and the Temple Bar area are noted for interesting underwater formations and great visibility.

Diving locations accessible by car: Fisherman's Point, on the north side of the Hemenway launch area at Lake Mead, is a nice non- muddy entrance area with a sunken boat off the point (please remember to be considerate of the fishermen in the area).

Scuba Park is south of the Lake Mead Marina. This area was made into a dive spot where boats for exploring were intentionally sunk. Buoys mark

the spot where the sunken boats lie.

Not only do scuba divers have a variety of diving environments at Lake Mead NRA but also a variety of animals to view. Swimming in the waters of the lakes are large mouth bass, striped bass, channel catfish, black crappie, rainbow trout, tilapia, razorback sucker, bluegill, green sunfish, threadfin shad, carp, crayfish, Asiatic freshwater clams, freshwater sponge, and spiny soft shelled turtles. Spear fishing is allowed, with a fishing license, for carp and striped bass only.

Please remember to follow all diving safety rules while enjoying your visit at Lake Mead NRA. Always dive within 100 feet of a "diver's down" flag (a solid red flag with a white diagonal strip going from the top left- hand corner to the bottom right- hand corner available at most dive shops). Navigational cove maps of Lake Mead and Lake Mohave are available at all ranger stations, marinas and the Lake Mead Visitor Center (Alan Bible). A guide to scuba diving at Lake Mead NRA is available at [www.nps.gov/lame/scuba.html#aquatic](http://www.nps.gov/lame/scuba.html#aquatic).

The second Saturday of every month the Nevada Scuba Retailers Association and the National Park Service are sponsoring eco-dives at Lakes Mead and Mohave. Scuba divers are invited to come and help clean up Lake Mead's and Lake Mohave's underwater resources. Check-in time is 9 a.m. All divers must hold a current scuba certification. The following is a list of scheduled dates and clean-up locations for 2004:

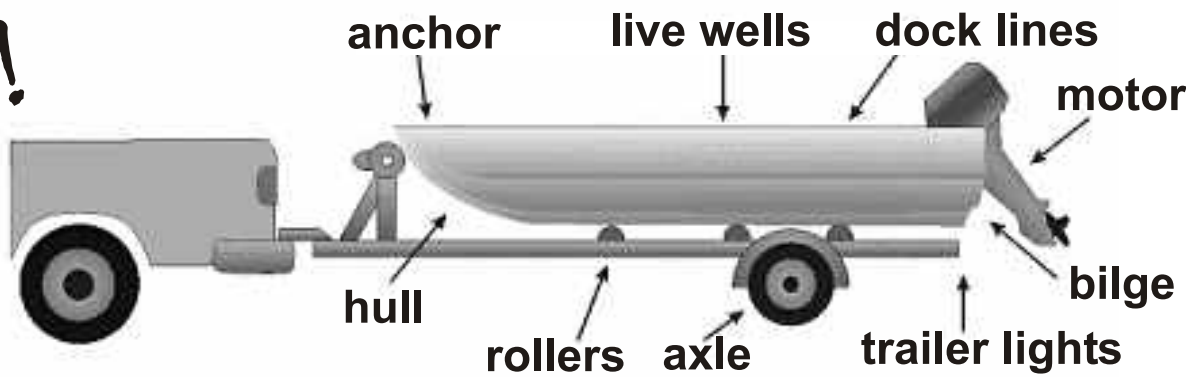
- Saturday, June 12 - Scuba Park
- Saturday, July 10 - Fisherman's Point
- Saturday, August 14 - Boulder Island
- Saturday, September 11 - Willow Beach
- Saturday, October 9 - Cottonwood Cove
- Saturday, November 13 - Callville Bay
- Saturday, December 11 - Scuba Park

## Invasion of the Zebra Mussel!



7

Stop Aquatic Hitchhikers!



**To prevent spreading zebra mussels inspect all parts of your boat and trailer**

Stop the spread of zebra mussels!

Plants and animals, such as the zebra mussel, may be lurking on your boat or trailer threatening to spread zebra mussels in our western lakes. Always clean and dry out your vessel before moving to another lake.

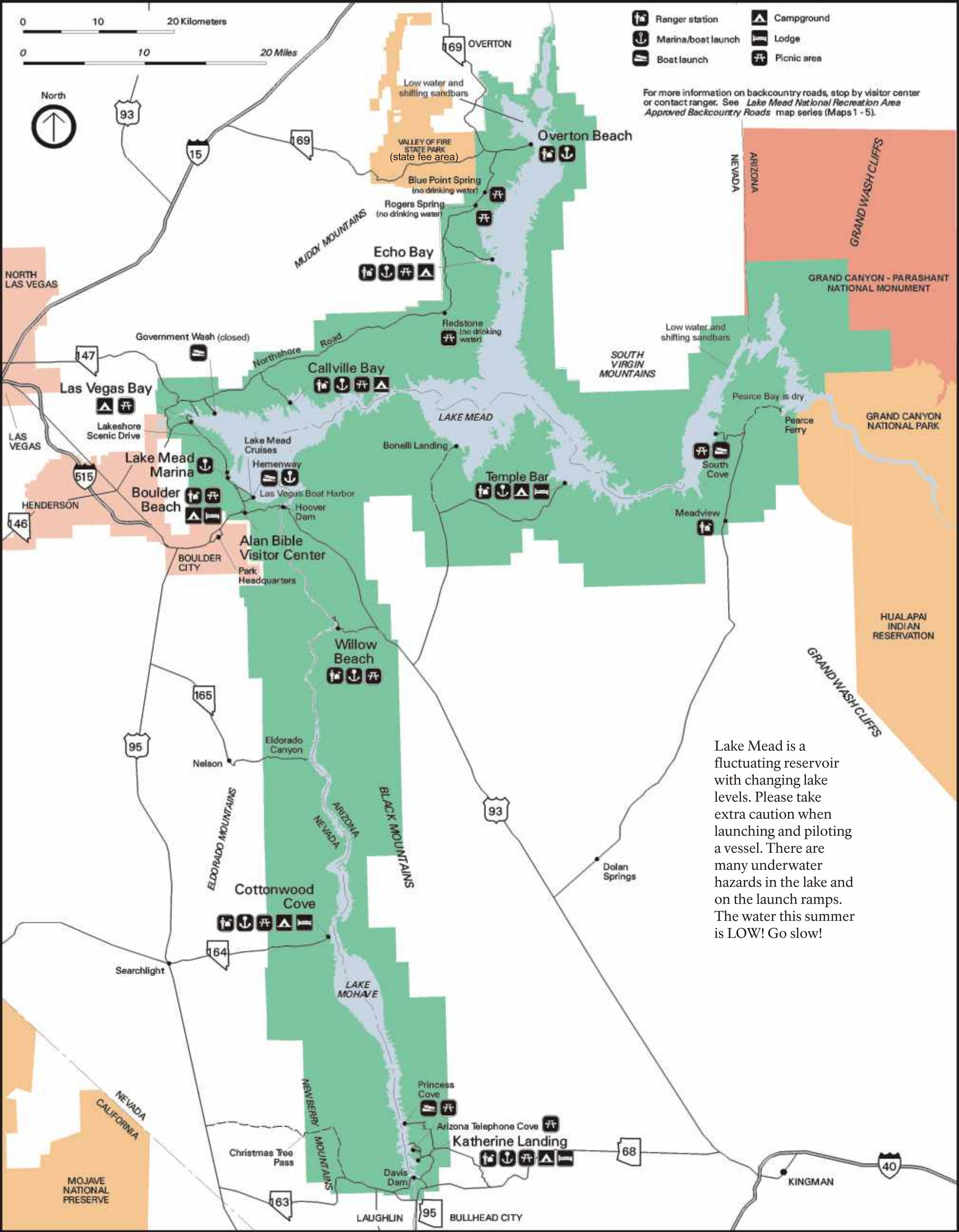
This invasive species from Eastern Europe is spreading at an alarming rate across the United States.

- Before launching your boat or personal watercraft at Lake Mead, remove all visible mud, plants, fish or animals from all of your recreation equipment
- Eliminate all water from your equipment before you move to another lake
- Never release plants, fish or animals into a body of water
- Clean and dry your boat, trailer, bilges and live wells and anything that comes into contact with the water

If you see a zebra mussel, please call 702.293.8546



# Lake Mead



Lake Mead is a fluctuating reservoir with changing lake levels. Please take extra caution when launching and piloting a vessel. There are many underwater hazards in the lake and on the launch ramps. The water this summer is LOW! Go slow!