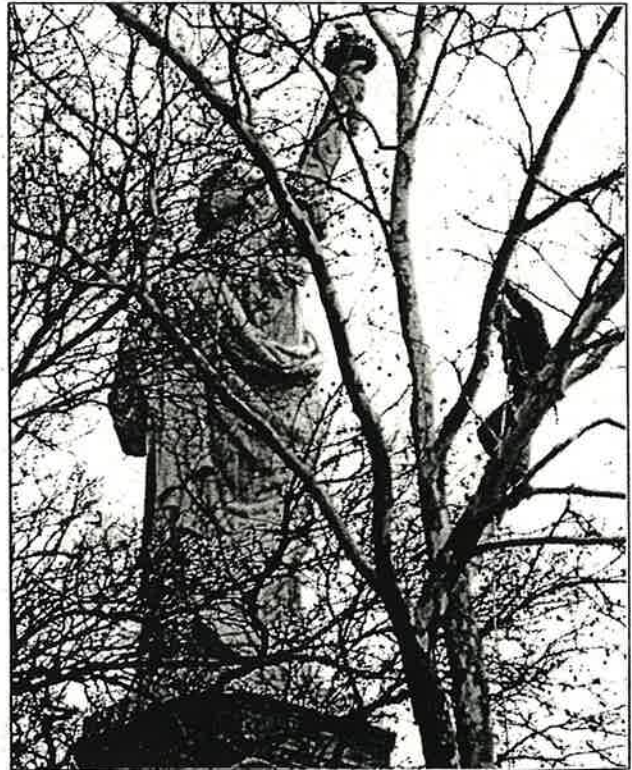


OLMSTED
CENTER
for
LANDSCAPE
PRESERVATION



1996-7
PROGRESS REPORT



Cover:
*Multi-park crew performing hazard reduction work on
trees at Statue of Liberty National Monument*

OLMSTED CENTER *for* LANDSCAPE PRESERVATION



MISSION

The Northeast has a rich legacy of nationally significant cultural landscapes - from carriage roads to battlefields, designed gardens to vernacular homesteads, industrial complexes to summer estates. The mission of the Olmsted Center for Landscape Preservation is to strengthen the capacity of national parks to preserve and manage their cultural landscapes.

STRATEGY

The Olmsted Center works to:

- ❑ Enhance landscape stewardship, improving the condition of resources and gradually expanding preservation skills and knowledge
- ❑ Identify, document and evaluate landscapes
- ❑ Plan for landscape preservation
- ❑ Provide training and professional development
- ❑ Enhance interpretation and public enjoyment of cultural landscapes.

Assistance from the Olmsted Center for Landscape Preservation is available to parks throughout the Northeast Field Area. Every project involves close collaboration with park staff, relying on their knowledge of the resources, and strengthens each park's capacity to preserve its cultural landscapes.

BENEFITS

As the National Park Service's only center for landscape preservation, training, and technology development, the Olmsted Center offers:

- ❑ Timely, cost-effective technical assistance
- ❑ A critical mass of specialized expertise not available in most parks. Over time, working in collaboration with parks, Center staff develop in-depth knowledge of park resources which is readily available to park managers in future projects.
- ❑ Professional development of park staff through collaboration on projects, the use of multi-park teams, on-the-job training, and workshops.
- ❑ A framework for cooperative relationships with other landscape preservation organizations and universities with specialized expertise.
- ❑ A clearinghouse for landscape preservation skills and information
- ❑ Opportunities to develop knowledge and public support for landscape preservation
- ❑ Testing of new methods and technologies such as computer applications for maintenance, mapping and inventory.

OLMSTED CENTER SERVICES



The work of the Olmsted Center is very innovative in its concept - carrying on the tradition of F.L. Olmsted in a hands-on way to help managers of federal areas and others preserve and manage significant landscapes.

Juror Comment, American Society of Landscape Architects, Public Landscapes of America
Historic Preservation Award, 1995

TECHNICAL ASSISTANCE

Preservation Maintenance

- Emergency stabilization field work* such as hazard tree reduction, emergency plant propagation, mitigation of storm damage
- Resource protection work* such as mitigation of compaction or erosion and replacement of missing or deteriorated plant material
- Cyclic preservation maintenance work* such as rejuvenative and orchard pruning, arboricultural services, hedge and vista management
- Development of *Landscape Preservation Maintenance Guides* including inventory, inspection/condition assessment, work calendar, and landscape feature data
- Identification, inventory, and mapping of historic plants

Preservation Planning

- Research, documentation, and planning including preparation of historic period plans
- Preparation of *Cultural Landscape Reports* including Treatment Plans
- Development and implementation of the Cultural Landscape Inventory (CLI)
- Analysis of significance, integrity, and National Register eligibility and assistance with Section 106 compliance
- Preparation of scopes of work, Cooperative Agreement and contract management

TRAINING

- Historic landscape maintenance workshops
- Specialized preservation maintenance skills training
- Gardener Intake Program
- Landscape preservation conferences

TECHNOLOGY DEVELOPMENT

- Adapting standard horticultural practices to the care of historic landscapes
- Developing systems for inventory and data management
- Post-treatment documentation
- Methodologies for inventorying plants on historic landscapes.

1996 ACCOMPLISHMENTS



TECHNICAL ASSISTANCE PROJECTS

Acadia National Park

Scope for a Preservation Plan, Historic Hiking Trail System (draft)

Historic Landscape Assessment and Duplication of Historic Documents (forthcoming)

Adams National Historic Site

Historic Plant Replanting, Old House

Hazard Tree Pruning, Old House

Tree Assistance, United First Parish Church

Boston National Historical Park

Develop Turf Management Plan

Edison National Historic Site

Hazard Tree Pruning

Fire Island National Seashore

Cultural Landscape Inventory Base Map and 1972 Period Plan (draft)

Martin Van Buren National Historic Site

Propagate Historic Trees

Minute Man National Historical Park

Apple Orchard Inventory/Rehabilitation

Cultural Landscape Reclamation

Tree Pruning

Morristown National Historical Park

Historic Landscape Assessment, Wick House

Specimen Tree Stabilization, Washington

Headquarters

Roosevelt-Vanderbilt National Historic Sites

Restoration of Redbud-Dogwood Grove

Bellfield Garden Hedge Replacement

Orchard Pruning

Sagamore Hill National Historic Site

Hazardous Tree Stabilization

Saint Gaudens National Historic Site

Hedge Maintenance and Restoration

Saratoga National Historical Park

Historic Landscape Assessment, DAR Memorial, Phase 2

Saugus Iron Works NHS

Stabilize and Preserve Sweet Cherry Tree (forthcoming)

Springfield Armory NHS

Prune Historic Trees

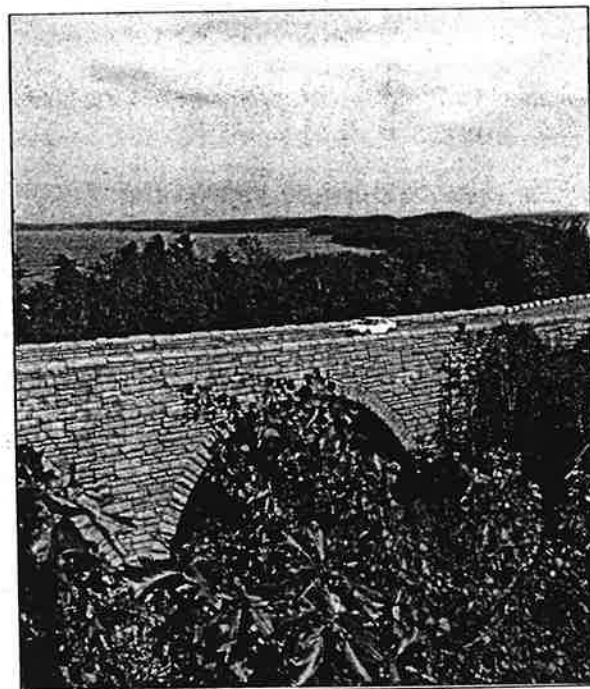
Statue of Liberty NM

Ellis Island Lawn Rehabilitation

Specimen Tree Planting

Weir Farm NHS

Alternatives for Pedestrian Walkway, Burlingham Complex



Paradise Hill Road Bridge, on the Historic Motor Road System, Acadia National Park.

CULTURAL LANDSCAPE INVENTORY

Acadia National Park

Wildwood Stable
Jordan Pond Area (draft)
Picnic Areas (forthcoming)

Minute Man National Historical Park

Battle Road Unit

Gettysburg National Military Park

CLI in cooperation with the Denver Service Center

Statue of Liberty National Monument

Liberty Island

Women's Rights National Historical Park

McClintock House (forthcoming)

HISTORIC PLANT PRESERVATION PROGRAM

Historic Plant Inventory

Edison National Historic Site
Roosevelt-Vanderbilt National Historic Site
Sagamore Hill National Historic Site

Historic Plant Nursery and Propagation Projects

Adams National Historic Site
Boston National Historical Park
Edison National Historic Site
F.L. Olmsted National Historic Site
Hampton National Historic Site
Longfellow National Historic Site
Martin Van Buren National Historic Site
Minute Man National Historical Park
Morristown National Historical Park
Roosevelt-Vanderbilt National Historic Site
Sagamore Hill National Historic Site
Salem Maritime National Historical Park
Saugus Iron Works National Historic Site
Saint-Gaudens National Historic Site
Weir Farm National Historic Site

CULTURAL LANDSCAPE REPORTS

Acadia National Park

Cultural Landscape Report for Blackwoods and Seawall Campgrounds: History, Existing Conditions, Analysis, and Treatment Recommendations

Adams National Historic Site

"Cultural Landscape Report: Illustrated Chronology" (draft)

Cod National Seashore

Cultural Landscape Report for Fort Hill

Edison National Historic Site

"Cultural Landscape Report for Edison Lab" (draft)

Frederick Law Olmsted National Historic Site

Cultural Landscape Report, Vol. 1: Site History (forthcoming)

Independence National Historical Park

"Cultural Landscape Report for Independence Square: Vegetation Inventory and Condition Assessment; Analysis and Period Plans" (forthcoming)

Martin Van Buren National Historic Site

"Cultural Landscape Report, Vol. 2: Treatment" (draft)

Saint Gaudens National Historic Site

"Cultural Landscape Report, Vol. 2: Analysis" (draft)

Weir Farm National Historic Site

Cultural Landscape Report, Vol. 1: Site History and Existing Conditions

"Cultural Landscape Report, Vol. 2: Character-Defining Features" (draft)

OTHER SPECIAL PROJECTS

Acadia National Park

*Historic Motor Road System: Compliance
Documentation and Rehabilitation
Guidelines*

Frederick Law Olmsted National Historic Site
Phase 2 Construction Documents
Phase 2 Construction (underway)

Gateway National Recreation Area
Vegetation Management, Fort Wadsworth

George Washington Birthplace National Monument

"Preservation Maintenance Plan for George
Washington Birthplace National
Monument" (draft)
Storm Damage Mitigation

Lyndhurst (National Trust)
Historic Orchard Inventory

Rock Creek Park

"Preservation Maintenance Plan" and Landscape
Stabilization Implementation for
Dumbarton Oaks Park (forthcoming)

Union College

"Woody Plan Inventory and Condition Assessment
for Isaac Jackson Garden"

Yosemite National Park

Historic Orchard Reconnaissance

TRAINING AND TECHNOLOGY DEVELOPMENT

Training

Gardener Intake Program, a two-year career
enhancement program for National Park
Service grounds staff

Servicewide Training Strategy: Development of
NPS Training Policies

Preservation Maintenance Training Work Group

Arborist Training Program, an 18-month skills
development program for NPS grounds
staff

"Maintaining an Historic Landscape" for the
Arnold Arboretum Adult Education
Series. January, 1996

"Cultural Landscape Workshop" at the Inter-
American Symposium on Authenticity
with US ICOMOS. March, 1996

"Developing International Training in Urban and
Landscape Conservation" at the
ICCROM/University of Montreal
Meeting. May, 1996

"Partners in Historic Landscape Preservation" at the
American Association of Botanic Gardens
and Arboreta Annual Meeting, May, 1996

"Historic Landscape Maintenance" at the New
York Chapter, American Society of
Landscape Architects Workshop, June
1996

"Beyond Pavement: The Rehabilitation of Acadia
National Park's Historic Motor Road
System" and "Site History and Grounds
Tour, Marsh-Billings National Historical
Park" at the Alliance for Historic
Landscape Preservation Annual Meeting.
June, 1996

"Inventorying Plants in Historic Landscapes" and
"Historic Landscape Inventories" at
Historic Massachusetts, Inc. Workshop on
Landscape Preservation. June, 1996

"Maintaining Historic Landscape" for the NPS
Cultural Resources for Managers Training,
Harpers Ferry, VA. August, 1996

Historic Landscape Maintenance Workshop at the
Golden Gate National Recreation Area,
Presidio District. September, 1996

"Reading History in the Landscape" at Breaking
New Ground, Interpreting the Social
History of Landscapes at Historic Site,
National Trust for Historic Preservation
Conference. October, 1996

"Restoring Historic Landscapes" for the Society for the Preservation of New England Antiquities. October, 1996

Publications

"Cultural Landscapes in the United States" in *Cultural Landscapes of Universal Value*

"Case Study, Historic Motor Roads, Acadia National Park" in *Saving Historic Roads: A Guidebook for Their Identification, Preservation and Management*

"Historic Plant Replacement Guide" in "Technical Appendix to Cultural Landscape Report Manual" (draft)

"Introduction," "Preserving Historic Woody Plants: Case Studies from the National Park Service," and "Restoring Fairsted's Woody Plants." in *Forum on Vegetation Management for Historic Sites* (forthcoming)

"Notes on Restoring the Woody Plants at Fairsted" in *Arnoldia*. Summer 1996

Technology

Evaluation of Hand-held, Pen-based Computer Technology for Inventory and Condition Assessment (ICAP) Program

Development, Beta-testing, and Implementation of the Cultural Landscape Inventory Database

SECTION 106 HISTORIC LANDSCAPE ASSISTANCE FOR:

Acadia National Park
Cape Cod National Seashore
Fort Stanwix National Monument (pending)
Frederick Law Olmsted National Historic Site
Longfellow National Historic Site
Minute Man National Historical Park
Roosevelt-Vanderbilt National Historic Sites
(pending)
Saint Gaudens National Historic Site
Salem Maritime National Historical Park
Weir Farm National Historic Site

1997 WORK PLAN



TECHNICAL SUPPORT

Ad hoc assistance and advice to parks throughout the Northeast Region, as well as Support Offices, the Regional Office, Denver Service Center, the Washington Office, and other historic property managers and partners:

- Fielding telephone requests for assistance
- Site visits and project scoping
- Assistance with developing RMP statements, project proposals, and scopes of work
- Technical review of contract documents, services, and products
- Distribution of technical information and Olmsted Center publications

Section 106 assistance - for 22 parks in the Northeast Region:

Acadia NP, Adams NHS, Blackstone/Roger Williams NM, Cape Cod NS, Fort Stanwix NM, FL Olmsted NHS, J.F. Kennedy NHS, Longfellow NHS, Lowell NHP, Marsh-Billings NHP, Martin Van Buren NHS, Minute Man NHP, Morristown NHP, Roosevelt-Vanderbilt NHS, Saint-Gaudens NHS, Saugus Iron Works NHS, Salem Maritime NHP, Saratoga NHP, Springfield Armory NHS, T. Roosevelt Inaugural NHS, Weir Farm NHS, Women's Rights NHS

Training and professional development:

Arborist Training Program
Gardener Intake Program
Professional development through project participation
Historic preservation workshops and presentations at conferences

Publications:

Vegetation Management for Historic Sites (with the Arnold Arboretum)
Guide to Inventorying Plants at Historic Properties (with the Arnold Arboretum)
Publications of project findings, such as Cultural Landscape Reports

PROJECTS

RESEARCH: Identification, Inventory, and Documentation

Cultural Landscape Reports for:

Historic Trail System, Acadia National Park
Edison National Historic Site
Frederick Law Olmsted National Historic Site
Home of F.D. Roosevelt, Roosevelt-Vanderbilt National Historic Sites
Independence Square, Independence National Historical Park
Longfellow National Historic Site
Carriage House, Marsh-Billings National Historical Park
Statue of Liberty National Monument

Cultural Landscape Inventories for:

Liberty Island, Statue of Liberty National Monument
Jordan Pond Area, Acadia National Park
Picnic Areas, Acadia National Park
McClintock House, Women's Rights National Historical Park
Gettysburg National Military Park (with Denver Service Center)
Valley Forge National Military Park (with Chesapeake/Allegheny Support Office)
Washington's Headquarters, Morristown National Historical Park

Historic Landscape Assessment for Fort Hancock, Gateway National Recreation Area
Historic Landscape Assessment for President's Park, National Capital Region
Woody Plant Inventory and Condition Assessment for Independence Square, Independence National Historical Park
Testing and implementation of the Cultural Landscape Inventory Database

PLANNING

Historic Trail Management Guidelines, Acadia
National Park
Historic Turf Management Plan, Boston National
Historical Park

Preservation Maintenance Plans for:
Dumbarton Oaks Park, Rock Creek Park
National Soldiers Cemetery, Gettysburg National
Military Park
Sagamore Hill National Historic Site
Valley Forge National Historical Park

Vegetation Management Plan, Fort Stanwix
National Monument

Cultural Landscape Report/Treatment Plans for:
Longfellow National Historic Site
Martin Van Buren National Historic Site
Sagamore Hill National Historic Site
National Soldiers Cemetery, Gettysburg National
Military Park
Weir Farm National Historic Site

Parking Study for the McClintock House,
Women's Rights National Historical Park
Historic Landscape Rehabilitation Plan, Wright
Brothers Memorial, Wright-Patterson Air
Force Base

Cultural Resources Assessment and
Recommendations for Grey Towers
National Historic Landmark, USDA
Forest Service

Planning Charrette for Fort Hill and Pamet
Cranberry Bog, Cape Cod National
Seashore

Planning for Battle Road Construction Project,
Minute Man National Historical Park

STEWARDSHIP: Sustainable Preservation Maintenance

Implementation of Historic Turf Management Plan,
Boston National Historical Park
Pedestrian walkway at Burlingham House, Weir
Farm National Historical Park
Hazardous tree work, Edison National Historic Site
Vegetation management, Fort Wadsworth,
Gateway National Recreation Area
Hazardous tree work, Minute Man National
Historical Park
Historic specimen tree pruning, Roosevelt-
Vanderbilt National Historic Sites

Landscape maintenance work, Roger Williams
National Memorial
Historic hedge work, Saint-Gaudens National
Historic Site
Historic orchard stabilization, Sagamore Hill
National Historic Site
Historic tree stabilization, Saugus Iron Works
National Historic Site
Historic tree work, Schuyler House, Saratoga
National Historical Park
Hazardous tree removal, Statue of Liberty National
Monument

Historic plant propagation for:
Roosevelt-Vanderbilt National Historic Sites
Saint-Gaudens National Historic Site
Edison National Historic Site
Sagamore Hill National Historic Site
Frederick Law Olmsted National Historic Site

Projects as of 2/18/97

OLMSTED CENTER STEERING COMMITTEE



A Steering Committee of park superintendents, facility managers and other professional park staff advises the Field Director and cluster leadership on program direction and accomplishments:

NEW ENGLAND CLUSTER

Granite Subcluster

Paul Haertel, Chair, Superintendent, Acadia NP
Blaise Davi, Facility Manager, Minute Man NHP
Rolf Diamant, Superintendent, Frederick Law
Olmsted NHS

Upstate New York Subcluster

Skip Cole, Superintendent, Roosevelt-Vanderbilt
NHS
Joe Finan, Facility Manager, Saratoga NHP

New York City Subcluster

Joe Avery, Superintendent, Manhattan Sites
Al Farrugio, Horticulturist, Statue of Liberty/Ellis
Island NM

New England SSO

Larry Gall, Team Leader, Stewardship and
Partnerships Team
Bob Holzheimer, Field Area Construction Program
Advisor and Project Manager, Urban
Projects, NY Project Office

CHESAPEAKE CLUSTER

Virginia Subcluster

Rebecca Harriett, Superintendent, Booker T.
Washington NM
Reed Engle, Cultural Resource Specialist,
Shenandoah NP

Eastern Pennsylvania Subcluster

Janet Wolf, Project Director, NJ Coastal Heritage
Trail
Beth Johnson, Chief of Research and Resource
Planning, Delaware Water Gap NRA

Mason-Dixon Subcluster

John Donahue, Superintendent, George
Washington Birthplace NM
Dave Drier, Chief of Maintenance, Gettysburg
NMP

ALLEGHENY CLUSTER

Ken Stephens, Supervisory Resource Specialists,
New River Gorge NR

Chesapeake/Allegheny SSO

Joe DiBello, Acting Team Leader, Stewardship and
Partnerships Team
Dorothy Geyer, Landscape Architect
Shaun Eyring, Historical Landscape Architect

NORTHEAST FDO

Bob McIntosh, Assistant Field Director, Research,
Planning, and Resource Stewardship
David Hollenberg, Assistant Field Director,
National Heritage Partnerships
Marc Koenings, Superintendent, Assateague Island
NS and Chair, Field Director's Task Force
on Cultural Centers

DENVER SERVICE CENTER

Joe Crystal, Technical Expert, Cultural Landscapes

PARKS HISTORIC STRUCTURES AND CULTURAL LANDSCAPE PROGRAM

Robert Page, Program Manager, Parks Cultural
Landscape Program

OLMSTED CENTER

Nora Mitchell, Director

OLMSTED CENTER PARTNERS AND STAFF



NATIONAL PARK SERVICE PARTNERS

The Frederick Law Olmsted National Historic Site serves as the base of operations for the Olmsted Center. As a park-based technical center, the staff have direct experience with park operations. The park also serves as a field laboratory for testing preservation techniques.

Rolf Diamant, Superintendent
Lee Farrow Cook, Deputy Superintendent
B.J. Dunn, Administrative Officer
Ed Bacigalupo, Facility Manager

Adams National Historic Site coordinates the Gardener Intake Program and the Orchard Management Team.

Gene Gabriel, Facility Manager

Fort McHenry National Monument/Hampton National Historic Site assists with plant inventories, condition assessments, and maintenance.

Paul Bitzel, Horticulturist

Minute Man National Historical Park provides facilities and maintenance support for the historic plant nursery.

Blaise Davi, Chief of Maintenance

Roosevelt-Vanderbilt National Historic Sites contributes expertise in specimen tree preservation.

Ron Galente, Supervisory Horticulturist
Steve Hanaburgh, Lead Arborist

Statue of Liberty National Monument provides specialized knowledge in urban soils and horticulture.

Al Farrugio, Horticulturist

Weir Farm National Historic Site helps develop and coordinate horticultural training programs.

Greg Waters, Horticulturist

New England System Support Office

Northeast Museum Services Center

Northeast Cultural Resource Center

Chesapeake System Support Office

Shaun Eyring, Historical Landscape Architect

Denver Service Center

Linda Moery, Functional Chief, Landscape Architecture

Joe Crystal, Technical Expert, Cultural Landscapes

Park Historic Structures and Cultural Landscape Program

Robert Page, Program Manager, Cultural Landscape Program

Williamsport Training Center (initiated)

COOPERATING ORGANIZATIONS

The Arnold Arboretum of Harvard University is a national leader in plant conservation, identification, research, and education programs. The Arboretum collaborates on plant identification and propagation, preservation training, and publications.

Robert Cook, Director
Phyllis Andersen, National Park Service Liaison

The State University of New York, Syracuse assists with cultural landscape reports and the cultural landscape inventory.

George Curry, Faculty of Landscape Architecture

Kristen Baker, Graduate Student

The Student Conservation Association assists with the recruitment of Olmsted Center interns.

The USDA Forest Service (initiated) provides training and technical assistance on forest and pest management issues.

The US/International Council on Monuments
and Sites facilitates international exchange on
cultural resource preservation

OLMSTED CENTER STAFF

Nora Mitchell, Director
Lauren Meier, Senior Technical Advisor
Charles Pepper, Program Manager, Preservation
Maintenance
Katharine Lacy, Program Manager, Preservation
Planning
Regina Bellavia, Historical Landscape Architect
Katherine Bennett, Landscape Architect Technician
Margaret Coffin, Historical Landscape Architect
Patrick Eleey, Landscape Architect Technician
H. Eliot Foulds, Historical Landscape Architect
Barbara Harty, Horticulturist
Duff McCully, Horticultural Technician
Kirsten Thornton, Preservation Horticulturist
David Uschold, Historical Landscape Architect

FOR MORE INFORMATION

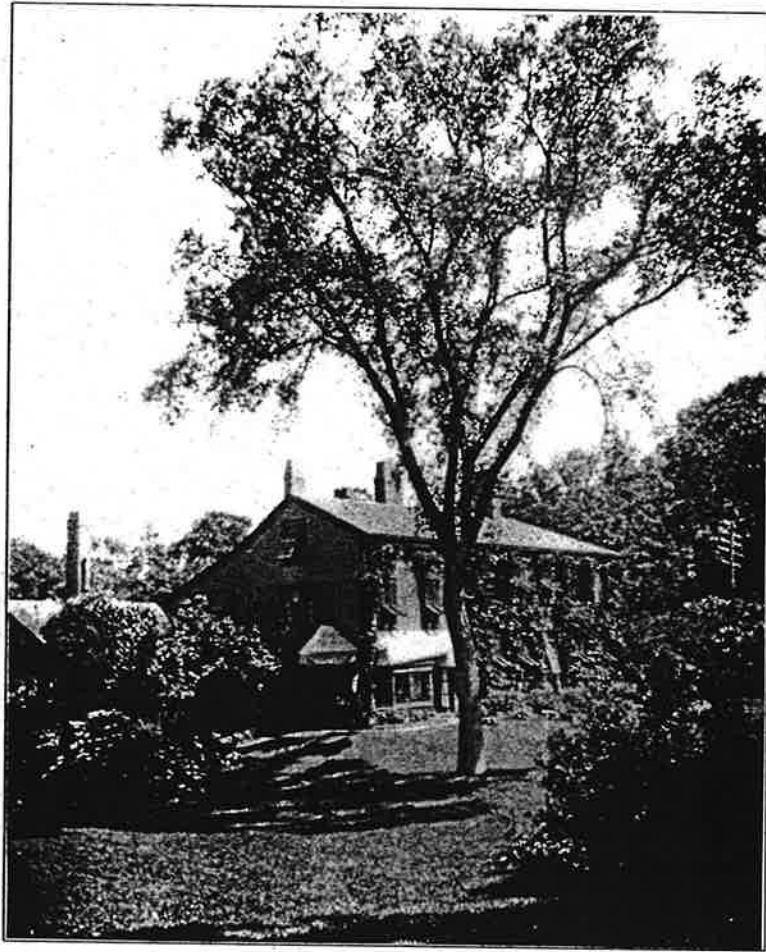
The Olmsted Center for Landscape Preservation



National Park Service
99 Warren Street
Brookline, Massachusetts 02146

Phone 617. 566.1689
FAX 617.232.3964

email nora_mitchell@nps.gov



Fairsted, nd - the home and office of Frederick Law Olmsted, his sons, and successors from 1883 until 1980, now the Frederick Law Olmsted National Historic Site where the Olmsted Center is located. Historic photo courtesy the National Park Service, Frederick Law Olmsted National Historic Site Archives.