

OLMSTED CENTER
for
LANDSCAPE
PRESERVATION



1996-98
PROGRESS REPORT



Cover:

Multi-park crew performing hazard reduction work on trees at Statue of Liberty National Monument

OLMSTED CENTER *for* LANDSCAPE PRESERVATION



MISSION

The Northeast has a rich legacy of nationally significant cultural landscapes - from carriage roads to battlefields, designed gardens to vernacular homesteads, industrial complexes to summer estates. The mission of the Olmsted Center for Landscape Preservation is to strengthen the capacity of national parks to preserve and manage their cultural landscapes.

STRATEGY

The Olmsted Center works to:

- ❑ Enhance landscape stewardship, improving the condition of resources and gradually expanding preservation skills and knowledge
- ❑ Identify, document and evaluate landscapes
- ❑ Plan for landscape preservation
- ❑ Provide training and professional development
- ❑ Enhance interpretation and public enjoyment of cultural landscapes.

Assistance from the Olmsted Center for Landscape Preservation is available to parks throughout the Northeast Field Area. Every project involves close collaboration with park staff, relying on their knowledge of the resources, and strengthens each park's capacity to preserve its cultural landscapes.

BENEFITS

As the National Park Service's only center for landscape preservation, training, and technology development, the Olmsted Center offers:

- ❑ Timely, cost-effective technical assistance
- ❑ A critical mass of specialized expertise not available in most parks. Over time, working in collaboration with parks, Center staff develop in-depth knowledge of park resources which is readily available to park managers in future projects.
- ❑ Professional development of park staff through collaboration on projects, the use of multi-park teams, on-the-job training, and workshops.
- ❑ A framework for cooperative relationships with other landscape preservation organizations and universities with specialized expertise.
- ❑ A clearinghouse for landscape preservation skills and information
- ❑ Opportunities to develop knowledge and public support for landscape preservation
- ❑ Testing of new methods and technologies such as computer applications for maintenance, mapping and inventory.

OLMSTED CENTER SERVICES



The work of the Olmsted Center is very innovative in its concept - carrying on the tradition of F.L. Olmsted in a hands-on way to help managers of federal areas and others preserve and manage significant landscapes.

Juror Comment, American Society of Landscape Architects, Public Landscapes of America
Historic Preservation Award, 1995

TECHNICAL ASSISTANCE

Preservation Maintenance

- Emergency stabilization field work* such as hazard tree reduction, emergency plant propagation, mitigation of storm damage
- Resource protection work* such as mitigation of compaction or erosion and replacement of missing or deteriorated plant material
- Cyclic preservation maintenance work* such as rejuvenative and orchard pruning, arboricultural services, hedge and vista management
- Development of *Landscape Preservation Maintenance Guides* including inventory, inspection/condition assessment, work calendar, and landscape feature data
- Identification, inventory, and mapping of historic plants

Preservation Planning

- Research, documentation, and planning including preparation of historic period plans
- Preparation of *Cultural Landscape Reports* including Treatment Plans
- Development and implementation of the Cultural Landscape Inventory (CLI)
- Analysis of significance, integrity, and National Register eligibility and assistance with Section 106 compliance
- Preparation of scopes of work, Cooperative Agreement and contract management

TRAINING

- Historic landscape maintenance workshops
- Specialized preservation maintenance skills training
- Gardener Intake Program
- Landscape preservation conferences

TECHNOLOGY DEVELOPMENT

- Adapting standard horticultural practices to the care of historic landscapes
- Developing systems for inventory and data management
- Post-treatment documentation
- Methodologies for inventorying plants on historic landscapes.

1996 ACCOMPLISHMENTS



TECHNICAL ASSISTANCE PROJECTS

Acadia National Park

Scope for a Preservation Plan, Historic Hiking Trail System (draft)

Historic Landscape Assessment and Duplication of Historic Documents (forthcoming)

Adams National Historic Site

Historic Plant Replanting, Old House

Hazard Tree Pruning, Old House

Tree Assistance, United First Parish Church

Boston National Historical Park

Develop Turf Management Plan

Edison National Historic Site

Hazard Tree Pruning

Fire Island National Seashore

Cultural Landscape Inventory Base Map and 1972 Period Plan (draft)

Martin Van Buren National Historic Site

Propagate Historic Trees

Minute Man National Historical Park

Apple Orchard Inventory/Rehabilitation

Cultural Landscape Reclamation

Tree Pruning

Morristown National Historical Park

Historic Landscape Assessment, Wick House

Specimen Tree Stabilization, Washington

Headquarters

Roosevelt-Vanderbilt National Historic Sites

Restoration of Redbud-Dogwood Grove

Bellfield Garden Hedge Replacement

Orchard Pruning

Sagamore Hill National Historic Site

Hazardous Tree Stabilization

Saint Gaudens National Historic Site

Hedge Maintenance and Restoration

Saratoga National Historical Park

Historic Landscape Assessment, DAR Memorial, Phase 2

Saugus Iron Works NHS

Stabilize and Preserve Sweet Cherry Tree (forthcoming)

Springfield Armory NHS

Prune Historic Trees

Statue of Liberty NM

Ellis Island Lawn Rehabilitation

Specimen Tree Planting

Weir Farm NHS

Alternatives for Pedestrian Walkway, Burlingham Complex



Paradise Hill Road Bridge, on the Historic Motor Road System, Acadia National Park.

CULTURAL LANDSCAPE INVENTORY

Acadia National Park

Wildwood Stable
Jordan Pond Area (draft)
Picnic Areas (forthcoming)

Minute Man National Historical Park

Battle Road Unit

Gettysburg National Military Park

CLI in cooperation with the Denver Service Center

Statue of Liberty National Monument

Liberty Island

Women's Rights National Historical Park

McClintock House (forthcoming)

HISTORIC PLANT PRESERVATION PROGRAM

Historic Plant Inventory

Edison National Historic Site
Roosevelt-Vanderbilt National Historic Site
Sagamore Hill National Historic Site

Historic Plant Nursery and Propagation Projects

Adams National Historic Site
Boston National Historical Park
Edison National Historic Site
F.L. Olmsted National Historic Site
Hampton National Historic Site
Longfellow National Historic Site
Martin Van Buren National Historic Site
Minute Man National Historical Park
Morristown National Historical Park
Roosevelt-Vanderbilt National Historic Site
Sagamore Hill National Historic Site
Salem Maritime National Historical Park
Saugus Iron Works National Historic Site
Saint-Gaudens National Historic Site
Weir Farm National Historic Site

CULTURAL LANDSCAPE REPORTS

Acadia National Park

Cultural Landscape Report for Blackwoods and Seawall Campgrounds: History, Existing Conditions, Analysis, and Treatment Recommendations

Adams National Historic Site

"Cultural Landscape Report: Illustrated Chronology" (draft)

Cod National Seashore

Cultural Landscape Report for Fort Hill

Edison National Historic Site

"Cultural Landscape Report for Edison Lab" (draft)

Frederick Law Olmsted National Historic Site

Cultural Landscape Report, Vol. 1: Site History (forthcoming)

Independence National Historical Park

"Cultural Landscape Report for Independence Square: Vegetation Inventory and Condition Assessment; Analysis and Period Plans" (forthcoming)

Martin Van Buren National Historic Site

"Cultural Landscape Report, Vol. 2: Treatment" (draft)

Saint Gaudens National Historic Site

"Cultural Landscape Report, Vol. 2: Analysis" (draft)

Weir Farm National Historic Site

Cultural Landscape Report, Vol. 1: Site History and Existing Conditions
"Cultural Landscape Report, Vol. 2: Character-Defining Features" (draft)

OTHER SPECIAL PROJECTS

Acadia National Park

*Historic Motor Road System: Compliance
Documentation and Rehabilitation
Guidelines*

Frederick Law Olmsted National Historic Site

Phase 2 Construction Documents
Phase 2 Construction (underway)

Gateway National Recreation Area

Vegetation Management, Fort Wadsworth

George Washington Birthplace National Monument

"Preservation Maintenance Plan for George
Washington Birthplace National
Monument" (draft)
Storm Damage Mitigation

Lyndhurst (National Trust)

Historic Orchard Inventory

Rock Creek Park

"Preservation Maintenance Plan" and Landscape
Stabilization Implementation for
Dumbarton Oaks Park (forthcoming)

Union College

"Woody Plan Inventory and Condition Assessment
for Isaac Jackson Garden"

Yosemite National Park

Historic Orchard Reconnaissance

TRAINING AND TECHNOLOGY

DEVELOPMENT

Training

Gardener Intake Program, a two-year career
enhancement program for National Park
Service grounds staff

Servicewide Training Strategy: Development of
NPS Training Policies

Preservation Maintenance Training Work Group

Arborist Training Program, an 18-month skills
development program for NPS grounds
staff

"Maintaining an Historic Landscape" for the
Arnold Arboretum Adult Education
Series. January, 1996

"Cultural Landscape Workshop" at the Inter-
American Symposium on Authenticity
with US ICOMOS. March, 1996

"Developing International Training in Urban and
Landscape Conservation" at the
ICCROM/University of Montreal
Meeting. May, 1996

"Partners in Historic Landscape Preservation" at the
American Association of Botanic Gardens
and Arboreta Annual Meeting, May, 1996

"Historic Landscape Maintenance" at the New
York Chapter, American Society of
Landscape Architects Workshop, June
1996

"Beyond Pavement: The Rehabilitation of Acadia
National Park's Historic Motor Road
System" and "Site History and Grounds
Tour, Marsh-Billings National Historical
Park" at the Alliance for Historic
Landscape Preservation Annual Meeting.
June, 1996

"Inventorying Plants in Historic Landscapes" and
"Historic Landscape Inventories" at
Historic Massachusetts, Inc. Workshop on
Landscape Preservation. June, 1996

"Maintaining Historic Landscape" for the NPS
Cultural Resources for Managers Training,
Harpers Ferry, VA. August, 1996

Historic Landscape Maintenance Workshop at the
Golden Gate National Recreation Area,
Presidio District. September, 1996

"Reading History in the Landscape" at Breaking
New Ground, Interpreting the Social
History of Landscapes at Historic Site,
National Trust for Historic Preservation
Conference. October, 1996

"Restoring Historic Landscapes" for the Society for the Preservation of New England Antiquities. October, 1996

Publications

"Cultural Landscapes in the United States" in *Cultural Landscapes of Universal Value*

"Case Study, Historic Motor Roads, Acadia National Park" in *Saving Historic Roads: A Guidebook for Their Identification, Preservation and Management*

"Historic Plant Replacement Guide" in "Technical Appendix to Cultural Landscape Report Manual" (draft)

"Introduction," "Preserving Historic Woody Plants: Case Studies from the National Park Service," and "Restoring Fairsted's Woody Plants." in *Forum on Vegetation Management for Historic Sites* (forthcoming)

"Notes on Restoring the Woody Plants at Fairsted" in *Arnoldia*. Summer 1996

Technology

Evaluation of Hand-held, Pen-based Computer Technology for Inventory and Condition Assessment (ICAP) Program

Development, Beta-testing, and Implementation of the Cultural Landscape Inventory Database

SECTION 106 HISTORIC LANDSCAPE ASSISTANCE FOR:

Acadia National Park
Cape Cod National Seashore
Fort Stanwix National Monument (pending)
Frederick Law Olmsted National Historic Site
Longfellow National Historic Site
Minute Man National Historical Park
Roosevelt-Vanderbilt National Historic Sites (pending)
Saint Gaudens National Historic Site
Salem Maritime National Historical Park
Weir Farm National Historic Site

1997 ACCOMPLISHMENTS



Park

Abraham Lincoln Birthplace NHS

Acadia National Park
Hiking Trails, Volume 1

Adams National Historic Site

Boston National Historical Park

Cape Cod National Seashore

Edison National Historic Site

Fort Stanwix National Monument

Frederick Law Olmsted National Historic Site
History

Gateway National Recreation Area

George Washington Birthplace NM

Gettysburg National Military Park
National

Projects

Assistance provided to Southeast Region
on existing conditions plans and
treatment recommendations

Cultural Landscape Report for the Historic

Trail management guidelines/case studies

Illustrated Site Chronology

Turfgrass Preservation Maintenance Plan
Implement turf management plan

DCP Charette for Fort Hill Bog

Cultural Landscape Report for Edison Lab
Hazardous tree pruning
Historic plant propagation

Tree transplanting specifications

Cultural Landscape Report Vol. 1: Site

Treatment Plan
Historic plant propagation

Historic Landscape Assessment for Fort
Hancock, Phase I
Vegetation alternatives and maintenance
guidelines, Fort Wadsworth

Preservation Maintenance Plan

Cultural Landscape Report for the
Soldiers' Cemetery (draft)
Tree Inventory and Condition Assessment,
Soldier's National Cemetery
Historic Orchard Assessment, Soldier's
National Cemetery
General Management Plan assistance

Grey Towers National Historic Landmark
(USDA Forest Service)

Cultural Resources Assessment and
Recommendations

Hopewell Furnace National Historic Site

Treatment Specifications and Preservation
Maintenance Guidelines, Phase I

Independence National Historical Park

Cultural Landscape Report for
Independence Square
Treatment Plan
Woody Plant Inventory and Condition
Assessment for Independence
Square

Longfellow National Historic Site

Cultural Landscape Report ,Vol. 2:
Analysis of Integrity and
Significance
Treatment Plan for the Carriage House
Cultural Landscape Report, Vol. 3:
Treatment

Marsh-Billings National Historical Park

Cultural Landscape Report for the
Carriage Barn and Setting

Martin Van Buren National Historic Site

Cultural Landscape Report, Vol. 2:
Treatment Plan

Minute Man National Historical Park

Pre-planning for Battle Road Construction
Project
Field reclamation and hazardous tree work

Morristown National Historical Park

Hazardous tree stabilization

National Capital Parks

Historic Landscape Assessment for First
Division
Monument and Sherman Plaza, President's
Park

Rock Creek Park

Preservation Maintenance Plan for
Dumbarton Oaks Park

Roger Williams National Memorial

Landscape maintenance assistance

Roosevelt-Vanderbilt National Historic Sites

Tree pruning
Historic plant propagation

Sagamore Hill National Historic Site

Preservation Maintenance Plan
Cultural Landscape Report, Vol. 2:
Treatment Recommendations and
Implementation Plan
Orchard stabilization
Historic plant propagation

Saint-Gaudens National Historic Site

Hedge restoration and maintenance
Historic plant propagation

Saratoga National Historical Park

Tree pruning, cabling, and stump grinding

Saugus Iron Works National Historic Site

Historic cherry tree stabilization

Statue of Liberty National Monument

Analysis of integrity, significance, and
character-defining features
Hazardous tree removal, Ellis Island

Weir Farm National Historic Site

Cultural Landscape Report, Vol. 2:
Analysis and Treatment
Alternatives for Pedestrian Walkway,
Burlingham Complex

Women's Rights National Historical Park

Parking Study for the McClintock House

Wright-Patterson Air Force Base

Landscape Rehabilitation Plan for Wright
Brothers Memorial

CULTURAL LANDSCAPE INVENTORY PROJECTS

Acadia National Park

Jordan Pond Area
Picnic Areas

Gettysburg National Military Park
(in collaboration with DSC)

Kalaupapa National Historic Site

Morristown National Historical Park

Washington's Headquarters

Statue of Liberty National Monument

Liberty Island

Valley Forge National Military Park
(in collaboration with CHSO)

Women's Rights National Historical Park

McClintock House

TRAINING

Beta-testing and implementation of the Cultural Landscape Inventory Database

Cultural Landscape Inventory Training

Gardener Intake Program, a two-year career enhancement program for National Park Service grounds staff

Arborist Training Program, an 18-month skills development program for NPS grounds staff

Internships, apprenticeships, and details that provide career enhance and professional development for NPS staff, students, and others.

INDIVIDUAL TRAINING SESSIONS

"Tree Care Safety and CPR/First Aid." Arborist Training Program. October 1996.

"Chain Saw Operation and Safety." Arborist Training Program. December 1996

"Preparing a Preservation Plan for a Historic Property." Arnold Arboretum of Harvard University. Jamaica Plain, MA. January 1997

"Tree Care Workshop." Arborist Training Program. F.L. Olmsted National Historic Site, Brookline, MA. January 1997

"Sustainability and Historic Preservation - Does the Shoe Fit?" Opportunities in Sustainable Development:: Strategies for the Chesapeake Basin. American Society of Landscape Architects and the Potomac, Maryland, Pennsylvania, and Virginia ASLA Chapter. College Park, MD. March 1997

"Landscape Preservation in the Northeast Region." NER Maintenance and Resource Management Conference, Sandy Hook, NJ. April 1997

"Historic Landscapes of the Hudson River Valley." Pre-conference Workshop, American Association of Botanic Gardens and Arboreta. May 1997

"Restoring Historic Landscapes: Reading History in the Landscape." Morris County Park Commission, Morristown, NJ. June, 1997.

"Tree Care Workshop." Arborist Training Program. University of Massachusetts and U. Mass Extension, Amherst, MA. July, 1997

"Tree and Shrub Pruning Techniques." Independence National Historical Park, Philadelphia, PA (with Hampton National Historic Site). August 1997

"Developing a Process for Long-term Preservation" at Managing Historic Designed Landscapes, Mount Rainier National Park. September 1997.

"Landscape Preservation Maintenance." Cultural Resources for Managers. Mather Training Center, Harpers Ferry, WV. September 1997

PUBLICATIONS

Articles by OCLP:

Diamant, Rolf; David A. Donath and Nora J. Mitchell. "Conservation with a Human Face: Re-Considering Stewardship." *History News*. American Association of State and Local History. Summer 1997, Vol. 52 #3: 22-24.

Mitchell, Nora J. and Katharine T. Lacy. "Reading Stories Written on the Land." *History News*. American Association of State and Local History. Summer 1997, Vol. 52, #3: 25-27.

Mitchell, Nora J. "Protecting Landscapes: Contributions from Landscape Preservation to Management of Parks and Reserves." *Making Protection Work, Proceedings of the Ninth Conference on Research and Resource Management in Parks and Public Lands*. David Harmon, editor. George Wright Society. March 1997: 285-289.

Meier, Lauren. "Alice Longfellow's Landscape in the 20th Century: the Contributions of Martha Brookes Hutcheson and Ellen Biddle Shipman." *Longfellow House Bulletin*. Friends of the Longfellow House. forthcoming

Meier, Lauren G. "Landscape Archeology." Book Review. *Journal of the New England Garden History Society*. Vol 5, 1997.

Articles about the OCLP

La Pierre, Yvette. "The Taming of the View." *National Parks*. National Parks and Conservation Association. September-October 1997: 30-33.

McCormick, Kathleen. "Close to Home, Reclaiming the original landscape design at Frederick Law Olmsted's private garden outside Boston" *Preservation*. National Trust for Historic Preservation. July/August 1997

Cultural Landscape Publication Series

Zaitzevsky, Cynthia. *Fairsted, a Cultural Landscape Report for the Frederick Law Olmsted National Historic Site, Vol. 1: Site History*. With an Afterword by Mac Griswold. Cultural Landscape Publication #12. Boston: Olmsted Center for Landscape Preservation and the Arnold Arboretum of Harvard University. (forthcoming)

Lacy, Katharine. *Cultural Landscape Report for Adams National Historic Site, Illustrated Site Chronology*. Cultural Landscape Publication #13. Boston: Olmsted Center for Landscape Preservation. (forthcoming)

Other publications:

Foulds, Eliot. "Maine: Resurfacing and Rehabilitating Acadia National Park's Historic Motor Road System." Case study in *Saving Historic Roads, Design and Policy Guidelines* by Paul Daniel Marriot. New York, NY: John Wiley & Sons, Inc. and the National Turst for Historic Preservation, Preservation Press. 1997

1998 WORK PLAN



NORTHEAST REGION

Park

Allegheny Cluster

Johnstown Flood National Memorial

New River Gorge National River

Chesapeake Cluster

Delaware Valley Sub-Cluster

Delaware Water Gap National Recreation Area

Hopewell Furnace National Historic Site

Upper Delaware Scenic and Recreational River

Maryland-Plus Sub-Cluster

Eisenhower National Historic Site

Gettysburg National Military Park

George Washington Birthplace NM

Hampton National Historic Site

Virginia Parks Sub-Cluster

Fredericksburg/Spotsylvania National Battlefield

Petersburg National Battlefield

Shenandoah National Park

Projects

Stabilize Historic Orchard

Cultural Landscape Project, Picnic
Area 1

Stabilize Historic Orchard

Historic Plant Propagation

Cultural Landscape Report: Treatment
Specifications Phase 2

Stabilize Historic Orchards

Historic Vegetation Preservation
Plan

Stabilize Historic Orchard

Historic Plant Propagation

Cultural Landscape Treatment Plan,
National Soldiers' Cemetery
Historic Specimen Tree Pruning,
National Soldiers' Cemetery
Historic Orchard Management Plan

Historic Specimen Tree Pruning

Stabilize Hazardous Trees

Historic Plant Propagation

Historic Plant Propagation

Cultural Landscape Report, City Point
Historic Plant Propagation

Preserve and Maintain Historic Judd
Garden

New England Cluster

Granite Sub-Cluster

Acadia National Park

Acadia Trails Cultural Landscape Report
Multi-Property National Register
Nomination
Remove Hazardous Trees

Adams National Historic Site

Historic Orchard Maintenance

Boston Harbor Islands National Recreation Area

Cultural Landscape Report

Cape Cod National Seashore

Preservation Maintenance Plan, Highland
Links

Frederick Law Olmsted National Historic Site

Landscape Preservation Maintenance
Guide

Longfellow National Historic Site

Site Rehabilitation

Marsh-Billings National Historical Park

Cultural Landscape Report/Forest
Management Plan
Stabilize Carriage Roads

Minuteman National Historical Park

Stabilize Hazardous Trees

New Bedford Whaling National Historical Park

Cultural Landscape Report

Roger Williams National Memorial

Integrated Pest Management Plan

Springfield Armory National Historic Site

Prevent Vegetation Damage to Historic
Structures

Weir Farm National Historic Site

Landscape Preservation Maintenance Plan
Historic Orchard Stabilization

New York City Sub-Cluster

Edison National Historic Site

Stabilize Hazardous Trees
Historic Plant Propagation

Gateway National Recreation Area

Fort Hancock Landscape Assessment
Phase II
Prevent Vegetation Damage to Historic
Fortifications

Morristown National Historical Park

Cultural Landscape Inventory
Historic Orchard Maintenance

Sagamore Hill National Historic Site

Historic Orchard Maintenance
Stabilize Hazardous Trees

Statue of Liberty National Monument

Prevent Vegetation Damage to
Historic Structures, Ellis Island
Cultural Landscape Report: Site
History
Cultural Landscape Inventory
Historic Specimen Tree Pruning

Up-State New York Sub-Cluster

Martin VanBuren National Historic Site

Historic Plant Propagation

Roosevelt-Vanderbilt National Historic Sites

Historic Resource Study, Vanderbilt
Mansion
Cultural Landscape Report, Home of
Franklin Roosevelt

Women's Rights National Historical Park

Cultural Landscape Inventory

Training

- Arborist Training Program
- Cultural Landscape Management Letter of Participation – Arnold Arboretum
- Gardener Skills Training
- Historic Cemetery Management
- Historic Landscape Maintenance Workshop
- Historic Roads Conference
- History of Conservation
- Landscape Training and Publication
- PAST

Publications

- Guide to Inventorying Plants at Historic Properties

Technical Assistance

- 106 Advisory

OTHER NPS REGIONS

Wright-Patterson Air Force Base

Landscape Preservation Construction
Supervision

Golden Gate National Recreation Area

Landscape Stabilization Plan, Alcatraz Island
Landscape Preservation Maintenance Plan,
Presidio

Abraham Lincoln Birthplace

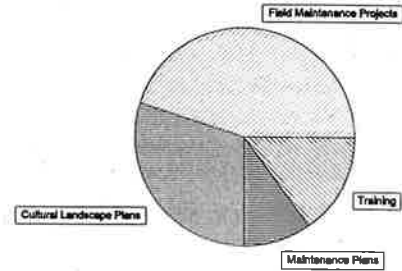
Cultural Landscape Report

1998 Northeast Region Summary

OVERVIEW

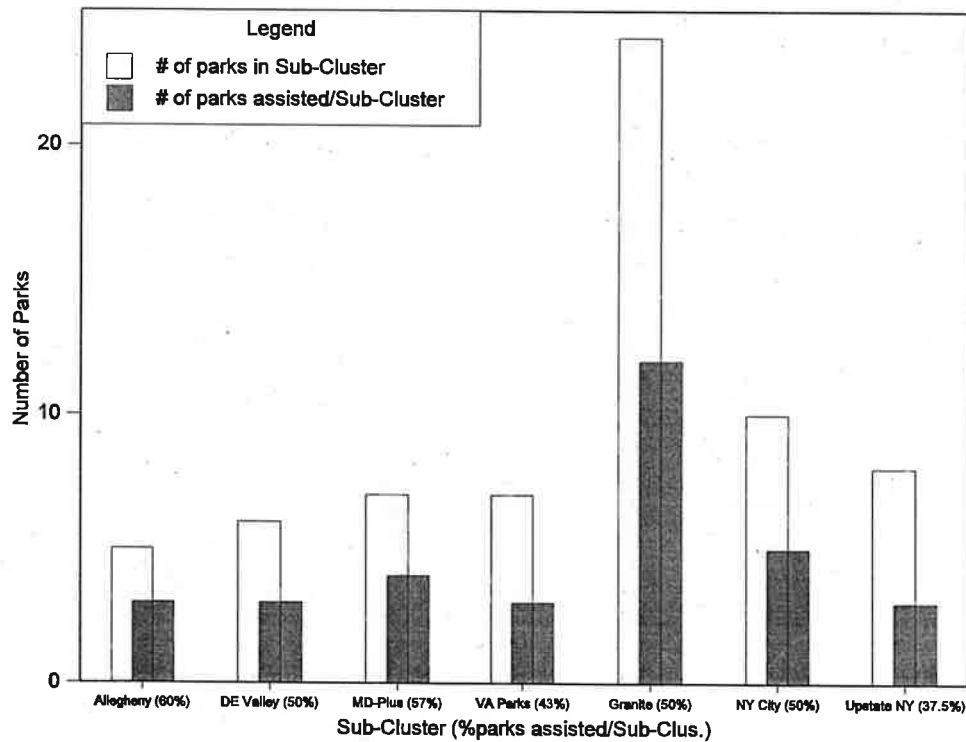
The Olmsted Center for Landscape Preservation will complete 51 projects for 32 parks in the Northeast Region in fiscal year 1998. The scope of project work ranges from preparation of cultural landscape reports and preservation maintenance plans, to coordinating multi-park landscape preservation maintenance teams to accomplish field work. More specifically, the Olmsted Center will produce 18 planning reports, 6 preservation maintenance plans, and complete 27 landscape preservation maintenance field projects. In addition, the Center will coordinate 9 landscape preservation programs to strengthen the capacity of parks to preserve their cultural landscapes.

Program Diversity



PERCENTAGE OF PARKS ASSISTED PER SUB-CLUSTER

The following chart graphically illustrates the ratio of parks in each cluster to the number of parks receiving assistance from Olmsted Center project work in FY98. Approximately 50% of all parks in each Sub-Cluster will directly benefit from this project work.



OLMSTED CENTER PARTNERS AND STAFF



NATIONAL PARK SERVICE PARTNERS

The **Frederick Law Olmsted National Historic Site** serves as the base of operations for the Olmsted Center. As a park-based technical center, the staff have direct experience with park operations. The park also serves as a field laboratory for testing preservation techniques.

Rolf Diamant, Superintendent
John Maounis, Acting Deputy Supt.
B.J. Dunn, Administrative Officer
Ed Bacigalupo, Facility Manager

Adams National Historic Site coordinates the Gardener Intake Program and the Orchard Management Team.

Gene Gabriel, Facility Manager

Boston National Historical Park assists with accomplishing planting projects, and historic tree and orchard maintenance.

Dave Rose, Chief of Maintenance
Tom O'Neill, Gardener Foreman

Fort McHenry National Monument/Hampton National Historic Site assists with plant inventories, condition assessments, and maintenance.

Paul Bitzel, Horticulturist

Minute Man National Historical Park provides facilities and maintenance support for the historic plant nursery.

Blaise Davi, Chief of Maintenance

Roosevelt-Vanderbilt National Historic Sites contributes expertise in specimen tree preservation.

Ron Galente, Supervisory Horticulturist
Steve Hanaburgh, Lead Arborist

Statue of Liberty National Monument provides specialized knowledge in urban soils and horticulture.

Al Farrugio, Horticulturist

Weir Farm National Historic Site helps develop and coordinate horticultural training programs.

Greg Waters, Horticulturist

**New England System Support Office
Northeast Museum Services Center
Northeast Cultural Resource Center**

Philadelphia Support Office

Shaun Eyring, Historical Landscape Architect

Denver Service Center

Linda Moery, Functional Chief, Landscape Architecture

Joe Crystal, Technical Expert, Cultural Landscapes

Park Historic Structures and Cultural Landscape Program

Randy Biallis, Program Manager
Robert Page, Program Leader, Cultural Landscape Program

Historic Preservation Training Center (initiated)

Tom McGrath, Superintendent
Dorothy Printup, Training Manager

COOPERATING ORGANIZATIONS

The **Arnold Arboretum of Harvard University** collaborates on plant identification and propagation, preservation training, and publications.

Robert Cook, Director
Phyllis Anderson, Landscape Historian

The **State University of New York, College of Environmental Science and Forestry** assists with cultural landscape reports and the cultural landscape inventory.

George W. Curry, Faculty of Landscape Architecture

Kristen Baker, Graduate Student
John Auwaetter, Graduate Student

The Society for the Preservation of New England Antiquities collaborates on historic plant preservation.

Elisabeth Igleheart, Director of Landscapes

The University of Virginia collaborates on the preparation of cultural landscape reports.

Daniel Bluestone, Director, Historic Preservation Program

Iowa State University of Science and Technology collaborates on the cultural landscape inventory.

Tim Keller, Faculty of Landscape Architecture

FOR MORE INFORMATION

The Olmsted Center for Landscape Preservation



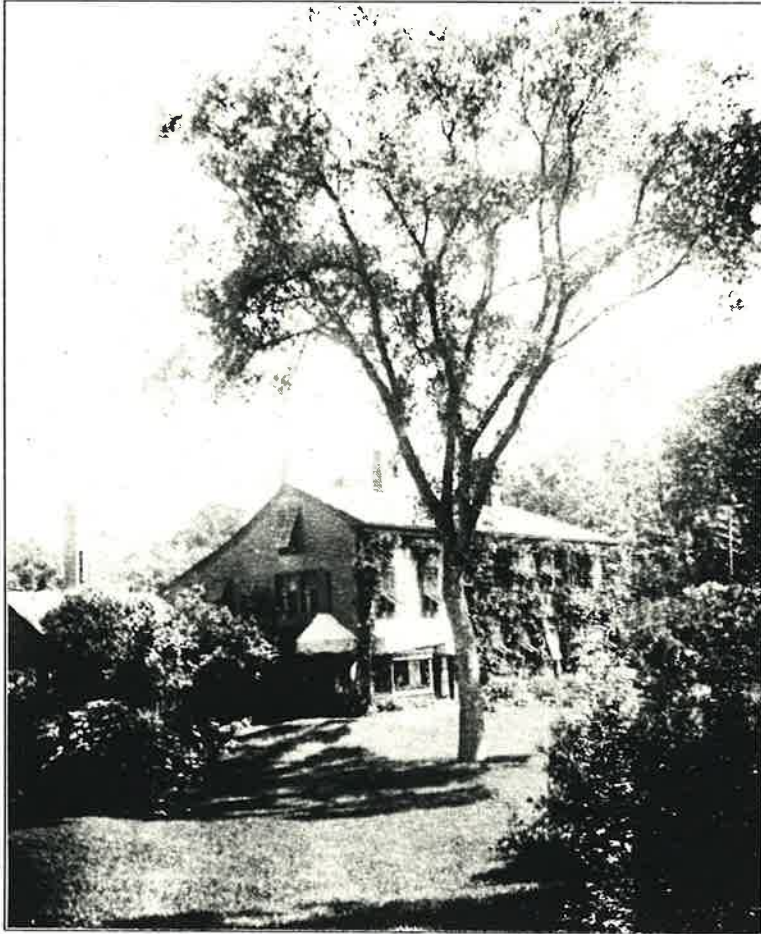
National Park Service
99 Warren Street
Brookline, MA 02445

Phone 617.566.1689
FAX 617.232.3964

email nora_mitchell@nps.gov

OLMSTED CENTER STAFF

Nora Mitchell, Director
Charles Pepper, Deputy Director
Lauren Meier, Senior Technical Advisor
Regina Bellavia, Historical Landscape Architect
Margaret Coffin, Historical Landscape Architect
Patrick Eleey, Historical Landscape Architect
Mat Gonshorowski, Landscape Architect
H. Eliot Foulds, Historical Landscape Architect
Barbara Harty, Horticulturist
Tracy Stakely, Historical Landscape Architect
Tom Woodward, Program Analyst
David Uschold, Historical Landscape Architect



Fairsted, nd - the home and office of Frederick Law Olmsted, his sons, and successors from 1883 until 1980, now the Frederick Law Olmsted National Historic Site where the Olmsted Center is located. Historic photo courtesy the National Park Service, Frederick Law Olmsted National Historic Site Archives.