

OLMSTED  
CENTER  
*for*  
LANDSCAPE  
PRESERVATION



1996  
PROGRESS REPORT



Cover:

*Multi-park crew performing hazard reduction work on trees at Statue of Liberty National Monument*

# OLMSTED CENTER *for* LANDSCAPE PRESERVATION



## MISSION

The Northeast has a rich legacy of nationally significant cultural landscapes - from carriage roads to battlefields, designed gardens to vernacular homesteads, industrial complexes to summer estates. The mission of the Olmsted Center for Landscape Preservation is to strengthen the capacity of national parks to preserve and manage their cultural landscapes.

## STRATEGY

The Olmsted Center works to:

- ❑ Enhance landscape stewardship, improving the condition of resources and gradually expanding preservation skills and knowledge
- ❑ Identify, document and evaluate landscapes
- ❑ Plan for landscape preservation
- ❑ Provide training and professional development
- ❑ Enhance interpretation and public enjoyment of cultural landscapes.

Assistance from the Olmsted Center for Landscape Preservation is available to parks throughout the Northeast Field Area. Every project involves close collaboration with park staff, relying on their knowledge of the resources, and strengthens each park's capacity to preserve its cultural landscapes.

## BENEFITS

As the National Park Service's only center for landscape preservation, training, and technology development, the Olmsted Center offers:

- ❑ Timely, cost-effective technical assistance
- ❑ A critical mass of specialized expertise not available in most parks. Over time, working in collaboration with parks, Center staff develop in-depth knowledge of park resources which is readily available to park managers in future projects.
- ❑ Professional development of park staff through collaboration on projects, the use of multi-park teams, on-the-job training, and workshops.
- ❑ A framework for cooperative relationships with other landscape preservation organizations and universities with specialized expertise.
- ❑ A clearinghouse for landscape preservation skills and information
- ❑ Opportunities to develop knowledge and public support for landscape preservation
- ❑ Testing of new methods and technologies such as computer applications for maintenance, mapping and inventory.

## OLMSTED CENTER SERVICES



*The work of the Olmsted Center is very innovative in its concept - carrying on the tradition of F.L. Olmsted in a hands-on way to help managers of federal areas and others preserve and manage significant landscapes.*

Juror Comment, American Society of Landscape Architects, Public Landscapes of America  
Historic Preservation Award, 1995

### TECHNICAL ASSISTANCE

#### Preservation Maintenance

- Emergency stabilization field work* such as hazard tree reduction, emergency plant propagation, mitigation of storm damage
- Resource protection work* such as mitigation of compaction or erosion and replacement of missing or deteriorated plant material
- Cyclic preservation maintenance work* such as rejuvenative and orchard pruning, arboricultural services, hedge and vista management
- Development of *Landscape Preservation Maintenance Guides* including inventory, inspection/condition assessment, work calendar, and landscape feature data
- Identification, inventory, and mapping of historic plants

#### Preservation Planning

- Research, documentation, and planning including preparation of historic period plans
- Preparation of *Cultural Landscape Reports* including Treatment Plans
- Development and implementation of the Cultural Landscape Inventory (CLI)
- Analysis of significance, integrity, and National Register eligibility and assistance with Section 106 compliance
- Preparation of scopes of work, Cooperative Agreement and contract management

### TRAINING

- Historic landscape maintenance workshops
- Specialized preservation maintenance skills training
- Gardener Intake Program
- Landscape preservation conferences

### TECHNOLOGY DEVELOPMENT

- Adapting standard horticultural practices to the care of historic landscapes
- Developing systems for inventory and data management
- Post-treatment documentation
- Methodologies for inventorying plants on historic landscapes.

## 1996 ACCOMPLISHMENTS



### TECHNICAL ASSISTANCE PROJECTS

**Acadia National Park**  
Scope for a Preservation Plan, Historic Hiking Trail System (draft)  
Historic Landscape Assessment and Duplication of Historic Documents (forthcoming)

**Adams National Historic Site**  
Historic Plant Replanting, Old House  
Hazard Tree Pruning, Old House  
Tree Assistance, United First Parish Church

**Boston National Historical Park**  
Develop Turf Management Plan

**Edison National Historic Site**  
Hazard Tree Pruning

**Fire Island National Seashore**  
Cultural Landscape Inventory Base Map and 1972 Period Plan (draft)

**Martin Van Buren National Historic Site**  
Propagate Historic Trees

**Minute Man National Historical Park**  
Apple Orchard Inventory/Rehabilitation  
Cultural Landscape Reclamation  
Tree Pruning

**Morristown National Historical Park**  
Historic Landscape Assessment, Wick House  
Specimen Tree Stabilization, Washington Headquarters

**Roosevelt-Vanderbilt National Historic Sites**  
Restoration of Redbud-Dogwood Grove  
Bellfield Garden Hedge Replacement  
Orchard Pruning

**Sagamore Hill National Historic Site**  
Hazardous Tree Stabilization

**Saint Gaudens National Historic Site**  
Hedge Maintenance and Restoration

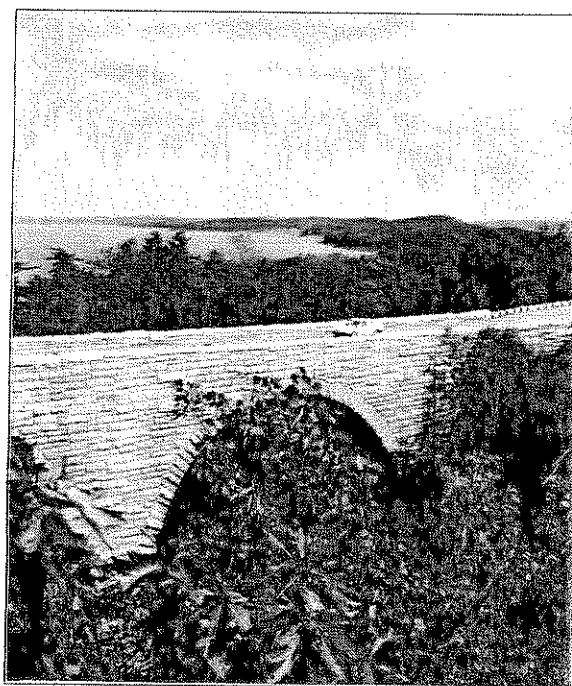
**Saratoga National Historical Park**  
Historic Landscape Assessment, DAR Memorial, Phase 2

**Saugus Iron Works NHS**  
Stabilize and Preserve Sweet Cherry Tree (forthcoming)

**Springfield Armory NHS**  
Prune Historic Trees

**Statue of Liberty NM**  
Ellis Island Lawn Rehabilitation  
Specimen Tree Planting

**Weir Farm NHS**  
Alternatives for Pedestrian Walkway, Burlingham Complex



*Paradise Hill Road Bridge, on the Historic Motor Road System, Acadia National Park.*

## CULTURAL LANDSCAPE INVENTORY

Acadia National Park  
Wildwood Stable  
Jordan Pond Area (draft)  
Picnic Areas (forthcoming)

Minute Man National Historical Park  
Battle Road Unit

Gettysburg National Military Park  
CLI in cooperation with the Denver Service Center

Statue of Liberty National Monument  
Liberty Island

Women's Rights National Historical Park  
McClintock House (forthcoming)

## HISTORIC PLANT PRESERVATION PROGRAM

Historic Plant Inventory  
Edison National Historic Site  
Roosevelt-Vanderbilt National Historic Site  
Sagamore Hill National Historic Site

### Historic Plant Nursery and Propagation Projects

Adams National Historic Site  
Boston National Historical Park  
Edison National Historic Site  
F.L. Olmsted National Historic Site  
Hampton National Historic Site  
Longfellow National Historic Site  
Martin Van Buren National Historic Site  
Minute Man National Historical Park  
Morristown National Historical Park  
Roosevelt-Vanderbilt National Historic Site  
Sagamore Hill National Historic Site  
Salem Maritime National Historical Park  
Saugus Iron Works National Historic Site  
Saint-Gaudens National Historic Site  
Weir Farm National Historic Site

## CULTURAL LANDSCAPE REPORTS

Acadia National Park  
*Cultural Landscape Report for Blackwoods and Seawall Campgrounds: History, Existing Conditions, Analysis, and Treatment Recommendations*

Adams National Historic Site  
"Cultural Landscape Report: Illustrated Chronology" (draft)

Cod National Seashore  
*Cultural Landscape Report for Fort Hill*

Edison National Historic Site  
"Cultural Landscape Report for Edison Lab" (draft)

Frederick Law Olmsted National Historic Site  
*Cultural Landscape Report, Vol. 1: Site History*  
(forthcoming)

Independence National Historical Park  
"Cultural Landscape Report for Independence Square: Vegetation Inventory and Condition Assessment; Analysis and Period Plans" (forthcoming)

Martin Van Buren National Historic Site  
"Cultural Landscape Report, Vol. 2: Treatment" (draft)

Saint Gaudens National Historic Site  
"Cultural Landscape Report, Vol. 2: Analysis" (draft)

Weir Farm National Historic Site  
*Cultural Landscape Report, Vol. 1: Site History and Existing Conditions*  
"Cultural Landscape Report, Vol. 2: Character-Defining Features" (draft)

## OTHER SPECIAL PROJECTS

### Acadia National Park

*Historic Motor Road System: Compliance  
Documentation and Rehabilitation  
Guidelines*

Frederick Law Olmsted National Historic Site  
Phase 2 Construction Documents  
Phase 2 Construction (underway)

Gateway National Recreation Area  
Vegetation Management, Fort Wadsworth

### George Washington Birthplace National Monument

"Preservation Maintenance Plan for George Washington Birthplace National Monument" (draft)  
Storm Damage Mitigation

Lyndhurst (National Trust)  
Historic Orchard Inventory

### Rock Creek Park

"Preservation Maintenance Plan" and Landscape Stabilization Implementation for Dumbarton Oaks Park (forthcoming)

### Union College

"Woody Plan Inventory and Condition Assessment for Isaac Jackson Garden"

### Yosemite National Park

Historic Orchard Reconnaissance

## TRAINING AND TECHNOLOGY DEVELOPMENT

### Training

Gardener Intake Program, a two-year career enhancement program for National Park Service grounds staff

Servicewide Training Strategy: Development of NPS Training Policies

Preservation Maintenance Training Work Group

Arborist Training Program, an 18-month skills development program for NPS grounds staff

"Maintaining an Historic Landscape" for the Arnold Arboretum Adult Education Series. January, 1996

"Cultural Landscape Workshop" at the Inter-American Symposium on Authenticity with US ICOMOS. March, 1996

"Developing International Training in Urban and Landscape Conservation" at the ICCROM/University of Montreal Meeting. May, 1996

"Partners in Historic Landscape Preservation" at the American Association of Botanic Gardens and Arboreta Annual Meeting, May, 1996

"Historic Landscape Maintenance" at the New York Chapter, American Society of Landscape Architects Workshop, June 1996

"Beyond Pavement: The Rehabilitation of Acadia National Park's Historic Motor Road System" and "Site History and Grounds Tour, Marsh-Billings National Historical Park" at the Alliance for Historic Landscape Preservation Annual Meeting. June, 1996

"Inventorying Plants in Historic Landscapes" and "Historic Landscape Inventories" at Historic Massachusetts, Inc. Workshop on Landscape Preservation. June, 1996

"Maintaining Historic Landscape" for the NPS Cultural Resources for Managers Training, Harpers Ferry, VA. August, 1996

Historic Landscape Maintenance Workshop at the Golden Gate National Recreation Area, Presidio District. September, 1996

"Reading History in the Landscape" at Breaking New Ground, Interpreting the Social History of Landscapes at Historic Site, National Trust for Historic Preservation Conference. October, 1996

"Restoring Historic Landscapes" for the Society for the Preservation of New England Antiquities. October, 1996

#### Publications

"Cultural Landscapes in the United States" in *Cultural Landscapes of Universal Value*

"Case Study, Historic Motor Roads, Acadia National Park" in *Saving Historic Roads: A Guidebook for Their Identification, Preservation and Management*

"Historic Plant Replacement Guide" in "Technical Appendix to Cultural Landscape Report Manual" (draft)

"Introduction," "Preserving Historic Woody Plants: Case Studies from the National Park Service," and "Restoring Fairsted's Woody Plants." in *Forum on Vegetation Management for Historic Sites* (forthcoming)

"Notes on Restoring the Woody Plants at Fairsted" in *Arnoldia*. Summer 1996

#### Technology

Evaluation of Hand-held, Pen-based Computer Technology for Inventory and Condition Assessment (ICAP) Program

Development, Beta-testing, and Implementation of the Cultural Landscape Inventory Database

#### SECTION 106 HISTORIC LANDSCAPE ASSISTANCE FOR:

Acadia National Park  
Cape Cod National Seashore  
Fort Stanwix National Monument (pending)  
Frederick Law Olmsted National Historic Site  
Longfellow National Historic Site  
Minute Man National Historical Park  
Roosevelt-Vanderbilt National Historic Sites (pending)  
Saint Gaudens National Historic Site  
Salem Maritime National Historical Park  
Weir Farm National Historic Site



## OLMSTED CENTER STEERING COMMITTEE



A Steering Committee of park superintendents, facility managers and other professional park staff advises the Field Director and cluster leadership on program direction and accomplishments:

### NEW ENGLAND CLUSTER

#### Granite Subcluster

Paul Haertel, Chair, Superintendent, Acadia NP  
Blaise Davi, Facility Manager, Minute Man NHP  
Rolf Diamant, Superintendent, Frederick Law  
Olmsted NHS

#### Upstate New York Subcluster

Skip Cole, Superintendent, Roosevelt-Vanderbilt  
NHS  
Joe Finan, Facility Manager, Saratoga NHP

#### New York City Subcluster

Joe Avery, Superintendent, Manhattan Sites  
Al Farrugio, Horticulturist, Statue of Liberty/Ellis  
Island NM

#### New England SSO

Larry Gall, Team Leader, Stewardship and  
Partnerships Team  
Bob Holzheimer, Field Area Construction Program  
Advisor and Project Manager, Urban  
Projects, NY Project Office

### CHESAPEAKE CLUSTER

#### Virginia Subcluster

Rebecca Harriet, Superintendent, Booker T.  
Washington NM  
Reed Engle, Cultural Resource Specialist,  
Shenandoah NP

#### Eastern Pennsylvania Subcluster

Janet Wolf, Project Director, NJ Coastal Heritage  
Trail  
Beth Johnson, Chief of Research and Resource  
Planning, Delaware Water Gap NRA

#### Mason-Dixon Subcluster

John Donahue, Superintendent, George  
Washington Birthplace NM  
Dave Drier, Chief of Maintenance, Gettysburg  
NMP

### ALLEGHENY CLUSTER

Ken Stephens, Supervisory Resource Specialists,  
New River Gorge NR

#### Chesapeake/Allegheny SSO

Joe DiBello, Acting Team Leader, Stewardship and  
Partnerships Team  
Dorothy Geyer, Landscape Architect  
Shaun Eyring, Historical Landscape Architect

### NORTHEAST FDO

Bob McIntosh, Assistant Field Director, Research,  
Planning, and Resource Stewardship  
David Hollenberg, Assistant Field Director,  
National Heritage Partnerships  
Marc Koenings, Superintendent, Assateague Island  
NS and Chair, Field Director's Task Force  
on Cultural Centers

### DENVER SERVICE CENTER

Joe Crystal, Technical Expert, Cultural Landscapes

### PARKS HISTORIC STRUCTURES AND CULTURAL LANDSCAPE PROGRAM

Robert Page, Program Manager, Parks Cultural  
Landscape Program

### OLMSTED CENTER

Nora Mitchell, Director

## OLMSTED CENTER PARTNERS AND STAFF



### NATIONAL PARK SERVICE PARTNERS

The Frederick Law Olmsted National Historic Site serves as the base of operations for the Olmsted Center. As a park-based technical center, the staff have direct experience with park operations. The park also serves as a field laboratory for testing preservation techniques.

Rolf Diamant, Superintendent  
Lee Farrow Cook, Deputy Superintendent  
B.J. Dunn, Administrative Officer  
Ed Bacigalupo, Facility Manager

Adams National Historic Site coordinates the Gardener Intake Program and the Orchard Management Team.

Gene Gabriel, Facility Manager

Fort McHenry National Monument/Hampton National Historic Site assists with plant inventories, condition assessments, and maintenance.

Paul Bitzel, Horticulturist

Minute Man National Historical Park provides facilities and maintenance support for the historic plant nursery.

Blaise Davi, Chief of Maintenance

Roosevelt-Vanderbilt National Historic Sites contributes expertise in specimen tree preservation.

Ron Galente, Supervisory Horticulturist  
Steve Hanaburgh, Lead Arborist

Statue of Liberty National Monument provides specialized knowledge in urban soils and horticulture.

Al Farrugio, Horticulturist

Weir Farm National Historic Site helps develop and coordinate horticultural training programs.

Greg Waters, Horticulturist

New England System Support Office

Northeast Museum Services Center

### Northeast Cultural Resource Center

#### Chesapeake System Support Office

Shaun Eyring, Historical Landscape Architect

#### Denver Service Center

Linda Moery, Functional Chief, Landscape Architecture

Joe Crystal, Technical Expert, Cultural Landscapes

#### Park Historic Structures and Cultural Landscape Program

Robert Page, Program Manager, Cultural Landscape Program

#### Williamsport Training Center (initiated)

### COOPERATING ORGANIZATIONS

The Arnold Arboretum of Harvard University is a national leader in plant conservation, identification, research, and education programs. The Arboretum collaborates on plant identification and propagation, preservation training, and publications.

Robert Cook, Director  
Phyllis Andersen, National Park Service Liaison

The State University of New York, Syracuse assists with cultural landscape reports and the cultural landscape inventory.

George Curry, Faculty of Landscape Architecture  
Kristen Baker, Graduate Student

The Student Conservation Association assists with the recruitment of Olmsted Center interns.

The USDA Forest Service (initiated) provides training and technical assistance on forest and pest management issues.

The US/International Council on Monuments  
and Sites facilitates international exchange on  
cultural resource preservation

#### OLMSTED CENTER STAFF

Nora Mitchell, Director  
Lauren Meier, Senior Technical Advisor  
Charles Pepper, Program Manager, Preservation  
Maintenance  
Katharine Lacy, Program Manager, Preservation  
Planning  
Regina Bellavia, Historical Landscape Architect  
Katherine Bennett, Landscape Architect Technician  
Margaret Coffin, Historical Landscape Architect  
Patrick Eleey, Landscape Architect Technician  
H. Eliot Foulds, Historical Landscape Architect  
Barbara Harty, Horticulturist  
Duff McCully, Horticultural Technician  
Kirsten Thornton, Preservation Horticulturist.  
David Uschold, Historical Landscape Architect

#### FOR MORE INFORMATION

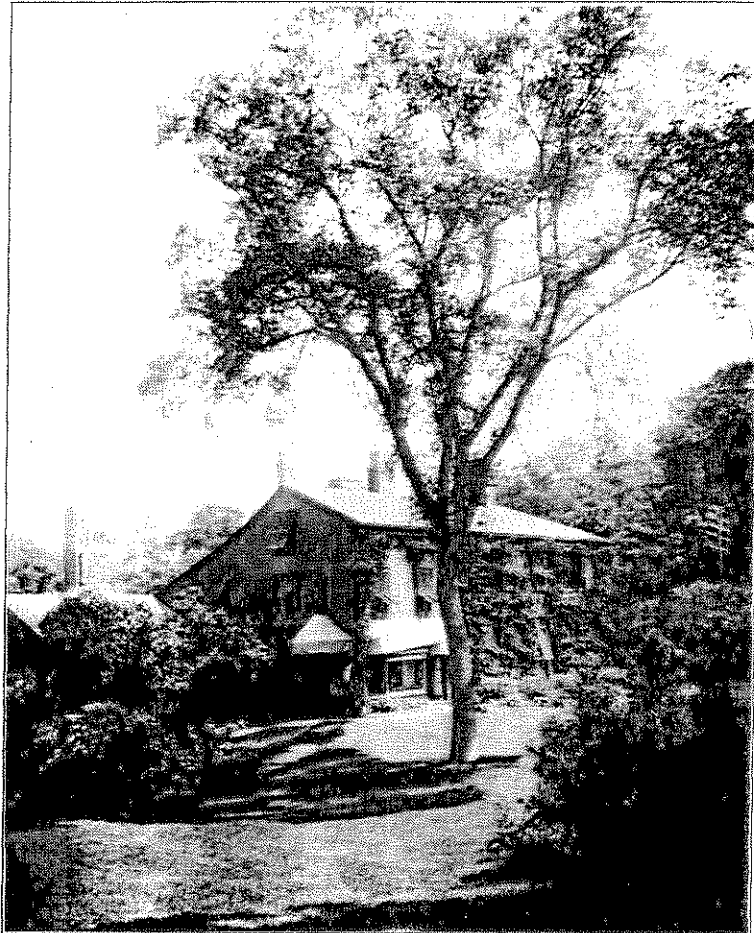
The Olmsted Center for Landscape Preservation



National Park Service  
99 Warren Street  
Brookline, Massachusetts 02146

Phone 617. 566.1689  
FAX 617.232.3964

email [nora\\_mitchell@nps.gov](mailto:nora_mitchell@nps.gov)



*Fairsted, nd - the home and office of Frederick Law Olmsted, his sons, and successors from 1883 until 1980, now the Frederick Law Olmsted National Historic Site where the Olmsted Center is located. Historic photo courtesy the National Park Service, Frederick Law Olmsted National Historic Site Archives.*