



1998
PROGRESS REPORT

1999
WORK PLAN

On the cover: Participants in the Northeast Region's Arborist Training Program learning about tree preservation. The Arborist Training Program, unique within the National Park Service, is one of several landscape preservation educational opportunities developed and coordinated by the Olmsted Center for Landscape Preservation.



FOR MORE INFORMATION, PLEASE CONTACT:

The Olmsted Center for Landscape Preservation

National Park Service

99 Warren Street

Brookline, Massachusetts 02445

Tel: 617.566.1689

Fax: 617.232.4073

Email: olmsted_center@nps.gov



Please visit our website at:

www.nps.gov/frla/oclp.htm

1999 Work Plan

Research

- Acadia National Park
National Register of Historic Places
Multiple Property Documentation,
Phase Two and Nominations for Sieur
de Monts and Schoodic Peninsula
- Cultural Landscape Inventory
Saint Croix Island International
Historic Site

Roosevelt-Vanderbilt National Historic
Site, Bellefield

Fort Stanwix National Monument

Marsh-Billings-Rockefeller
National Historical Park

Morristown National Historical Park
- Eisenhower National Historic Site
Cultural Landscape Report and
Treatment Plan
- Edison National Historic Site
Hazard Reduction, Historic Tree
Management
- Gettysburg National Battlefield
Critical Orchard Maintenance
- Hopewell Furnace National Historic Site
Critical Orchard Maintenance
- Marsh-Billings-Rockefeller
National Historical Park
Replace Hemlock Hedge
- Roosevelt -Vanderbilt National Historic
Site
Critical Orchard Maintenance
- William Howard Taft National Historic
Site
Plant Selection and Cultural Landscape
Technical Assistance (in collaboration
with Midwest Regional Office)
- Martin Van Buren National Historic Site
Historic Orchard Rehabilitation

Planning

- Cape Cod National Seashore
Guidelines for Salt Pond Visitor Center
Planning (in collaboration with North-
east Cultural Resource Center and
Denver Service Center)
- Longfellow National Historic Site
Carriage House Rehabilitation
- Petersburg National Battlefield
Prepare Cultural Landscape Report for
the Fish-Hook Fortifications, Phase
Two
- Vanderbilt Mansion National Historic Site
Historic Resource Study

Stewardship

- Acadia National Park
Cultural Landscape Report, Historic
Trails System, Vol. Three, Treatment
Plan
- Carl Sandburg National Historic Site
Hazardous Tree Assessment (in collabo-
ration with Southeast Regional Office)
- Cultural Landscape Publication Series
Inventorying and Preserving
Historic Orchards
Technical Information Series
Cultural Landscape Reports
Longfellow National Historic Site
New Bedford Whaling National
Historical Park

Introduction

Mission

Our nation has a rich legacy of cultural landscapes - from carriage roads to battlefields, designed gardens to vernacular homesteads, and industrial complexes to river valley settlements. The Olmsted Center for Landscape Preservation promotes the preservation of significant landscapes through research, planning, stewardship, and education. The Center accomplishes its mission in collaboration with a network of partners including national parks, universities, government agencies and private nonprofit organizations.

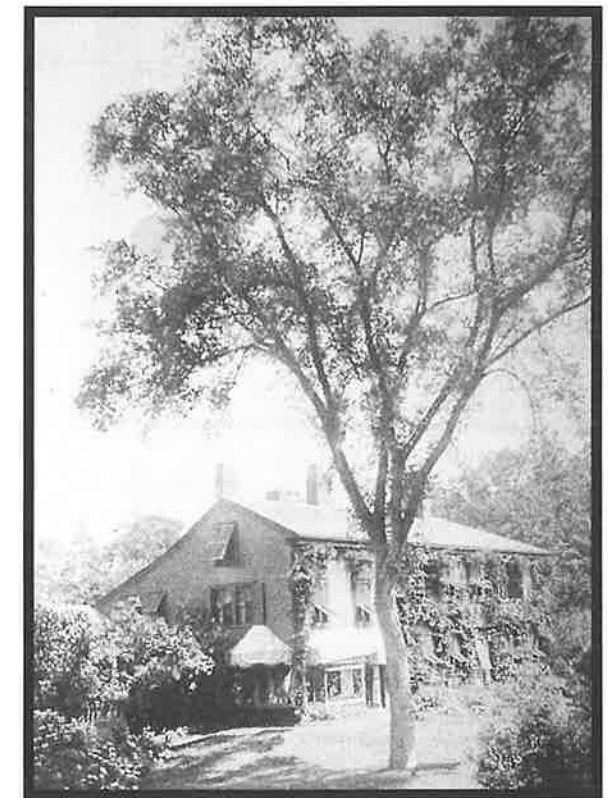
Based at the Frederick Law Olmsted National Historic Site, the Olmsted Center is uniquely positioned to make use of the extensive collection of original design records in the Olmsted archives. This partnership strengthens the interface between historic landscape architecture and contemporary preservation practice, perpetuating the traditions of the Olmsted offices and Frederick Law Olmsted's lifelong commitment to people, parks, and public spaces.

Strategy

The Olmsted Center works to:

- Enhance landscape stewardship, improving the condition of resources and expanding preservation skills and knowledge
- Plan for landscape preservation
- Identify, document and evaluate landscapes
- Provide landscape preservation training and professional development
- Enhance interpretation and public enjoyment of cultural landscapes.

Through an integrated approach to research, planning, stewardship, and education, the Olmsted Center strives to improve the condition of landscape resources and expand the preservation skills and knowledge of landscape managers. The Olmsted Center provides a critical mass of expertise in the areas of landscape history, historic landscape architecture, horticulture, and preservation maintenance, and assists historic properties with preserving and managing their cultural landscapes. Every project involves close collaboration with site staff, relying on their knowledge of the resources and strengthening each site's capacity to preserve its cultural landscapes.



Historic view of the south lawn at Fairsted, the Frederick Law Olmsted National Historic Site, current location of the Olmsted Center for Landscape Preservation. Photo courtesy of the Frederick Law Olmsted National Historic Site Archives.

Partners and Staff

National Park Service Partners

Frederick Law Olmsted National Historic Site is the principal partner of the Olmsted Center. The Olmsted Center works in collaboration with the park Administration, Archives, Interpretation - Education and Maintenance programs to effectively implement pertinent landscape preservation projects.

- Rolf Diamant, Superintendent
- John Maounis, Acting Deputy Superintendent

Northeast Regional Office

- Marie Rust, Regional Director
- Sandra Walters, Deputy Regional Director
- Robert McIntosh, Assistant Regional Director for Research, Planning and Resources Stewardship

Boston Support Office

- Terry Savage, Superintendent
- Larry Gall, Team Manager, Stewardship and Partnerships
- Paul Weinbaum, Lead Historian
- Rebecca Joseph, Ethnographer

Philadelphia Support Office

- Keith Everett, Superintendent
- Joe DiBello, Team Leader, Stewardship and Partnerships
- Bonnie Halda, Group Manager, Cultural Resources
- Shaun Eyring, Cultural Landscape Program Leader
- Nancy Brown, Historical Landscape Architect

Adams National Historic Site coordinates the Gardener Intake Program and the Orchard Management Team.

- Gene Gabriel, Facility Manager

Boston National Historical Park assists with preservation maintenance field projects.

- Dave Rose, Chief of Maintenance
- Marcy Beitel, Facility Manager
- Tom O'Neill, Gardener Foreman

Fort McHenry National Monument and Historical Shrine/Hampton National Historic Site assists with plant inventories, condition assessments, and preservation maintenance projects.

- Greg McGuire, Chief of Maintenance
- Paul Bitzel, Horticulturist

Minute Man National Historical Park provides facilities and maintenance support for the historic plant nursery.

- Blaise Davi, Chief of Maintenance

Roosevelt-Vanderbilt National Historic Sites contribute expertise in specimen tree preservation.

- Henry Van Brookhoven, Chief of Maintenance
- Ron Galente, Supervisory Horticulturist

Statue of Liberty National Monument provides specialized knowledge in urban soils and horticulture.

- Peter O'Dougherty, Chief of Maintenance
- Al Farrugio, Horticulturist

Weir Farm National Historic Site helps develop and coordinate horticultural training programs.

- Bob Fox, Chief of Maintenance
- Greg Waters, Horticulturist

Northeast Museum Services Center

- Duncan Hay, Acting Director

Northeast Cultural Resource Center

- Myra Harrison, Director
- Stephen Spaulding, Manager, Building Conservation Branch
- Steven Pendery, Manager, Archeology Branch

Denver Service Center

- Linda Moery, Functional Chief, Landscape Architecture
- Joe Crystal, Technical Expert, Cultural Landscapes

Southeast Support Office

- Lucy Lawliss, Historical Landscape Architect

EDUCATION: TRAINING PROGRAMS, WORKSHOPS AND PUBLICATIONS

The Olmsted Center promotes the stewardship of cultural landscapes by providing educational opportunities in preservation principles and practices. The Center disseminates information on the techniques and the principles of preservation practice through training programs and publications.

- **Career Development Programs**
Career development programs provided by the Olmsted Center include upward mobility and internship opportunities.
- **Publications**
Publications include the Cultural Landscape Publication Series, technical reports, articles by Olmsted Center staff and articles about the work of the Olmsted Center.
- **Workshops**
Workshops provided by the Olmsted Center include both conferences and individual training sessions.

- **Career Development Programs:**
Gardener Intake Program, a two-year career enhancement program for National Park Service grounds staff.

Arborist Training Program, an eighteen-month skills development program for National Park Service grounds staff.

Internships, apprenticeships and work details that provide career enhancement and professional development for National Park Service staff, students and others.

- **Publications:**
Cultural Landscape Publication Series:
Guide to Developing a Preservation Maintenance Plan for a Historic Landscape (revised). Gina Bellavia and Margie Coffin.

Technical Reports:

Cultural Landscape Report for New Bedford Whaling National Historical Park. Chrisitne Arato and Patrick Eleey.

Integrated Pest Management Plan for Roger Williams National Memorial. Marybeth Hanley and Barbara Harty.

Landscape Stabilization and Maintenance Guidelines for Alcatraz Island, Golden Gate National Recreation Area. Patrick Eleey.

Preservation Maintenance Plan for Sagamore Hill National Historic Site. Barbara Harty.

Preservation Maintenance Plan for Highland Golf Links, Cape Cod National Seashore. Tracy Stakely.

Preservation Maintenance Plan for Weir Farm National Historic Site. Gina Bellavia.

- **Workshops:**
"Planning for Preservation: Researching and Documenting Historic Landscapes," April 1998.
"Historic Landscape Preservation: Developing a Preservation Maintenance Plan," September 1998.
Letter of Participation in Historic Landscape Preservation (with the Arnold Arboretum of Harvard University, Jamaica Plain, MA)
"Identifying and Reading History in the Landscape," September 1998. Massachusetts State Historic Preservation Conference, Boston.

"Celebrating Olmsted Landscapes: Past, Present and Future," September 1998. North Easton Colloquium, North Easton, MA.

"Historic Landscape Preservation: Making Maintenance a Priority," August 1998. Presidio, San Francisco, CA.

"The Treatment of Historic Landscapes," December 1998. Radcliffe Seminars, Cambridge, MA (with Shary Page Berg)

Rural Retreats and Country Gardens: "Landscape Preservation in the National Park Service. Reclaiming the Historic Gardens at Weir Farm." June 1998
Weir Farm NHS

1998 Technical Assistance Projects



FOCUS ON EDUCATION: **HISTORIC LANDSCAPE PRESERVATION:** **MAKING MAINTENANCE A PRIORITY**

A national workshop addressing a wide variety of historic landscape preservation maintenance issues was held at the Presidio, Golden Gate National Recreation Area, in San Francisco, California from August 17-20, 1998. The workshop was developed and co-sponsored by the National Park Service including the Olmsted Center for Landscape Preservation, the Historic Preservation Training Center, Cultural Resource Stewardship and Partnerships Park Historic Structures and Cultural Landscapes, and the Golden Gate National Recreation Area in collaboration with the Golden Gate National Parks Association and The Garden Conservancy, Inc.

Participants included 125 field practitioners, representing over 25 federal, state and local agencies and private organizations from 15 states. Attendees received specialized training in the principles and practices of maintaining cultural landscapes. Lectures, problem solving sessions and site visits provided practical solutions to complex landscape preservation challenges such as managing historic vegetation, maintaining and protecting historic landscape features, protecting archeological features, and sustainable pest management practices.

This workshop built on previous training programs coordinated by the Olmsted Center for Northeast Region parks over the past several years. It was the first national program, since 1993, to provide preservation training to landscape maintenance staff in the National Park Service.

Park Historic Structures and Cultural Landscapes Program, Washington Support Office

- Randy Biallas, Program Manager
- Robert Page, Program Leader, Cultural Landscapes Program

Heritage Preservation Services, Washington Support Office

- Sharon Park, Chief, Technical Preservation Services
- Charles Birnbaum, Historic Landscape Initiative Coordinator

National Training Program

- Ed Carlin, Chief, Training and Development
- John Tyler, Deputy Chief, Training and Development

Historic Preservation Training Center

- Tom McGrath, Superintendent
- Dorothy Printup, Training Manager

Cooperating Organizations

The Society for the Preservation of New England Antiquities

- Jane Nylander, President
- Elizabeth Igleheart, Director of Landscapes

The Arnold Arboretum of Harvard University

- Robert Cook, Director
- Phyllis Andersen, Director, Cultural Landscape Institute

Iowa State University

- Tim Keller, Chair, Department of Landscape Architecture

State University of New York (SUNY), Syracuse

- George Curry, Distinguished Professor, Faculty of Landscape Architecture

University of Virginia

- Daniel Bluestone, Chair, Historic Preservation Department

The **Student Conservation Association** assists with the recruitment of Olmsted Center interns.

Olmsted Center Staff

- Nora Mitchell, Director
- Charles Pepper, Deputy Director
- Regina Bellavia, Historical Landscape Architect
- Margaret Coffin, Historical Landscape Architect
- Patrick Eeley, Historical Landscape Architect
- H. Eliot Foulds, Historical Landscape Architect
- Mat Gonshorowski, Landscape Architect
- Barbara Harty, Horticulturist
- Lauren Meier, Historical Landscape Architect
- Scott Roe, Landscape Architect Technician
- Tracy Stakely, Historical Landscape Architect
- David Uschold, Historical Landscape Architect
- Tom Woodward, Program Analyst

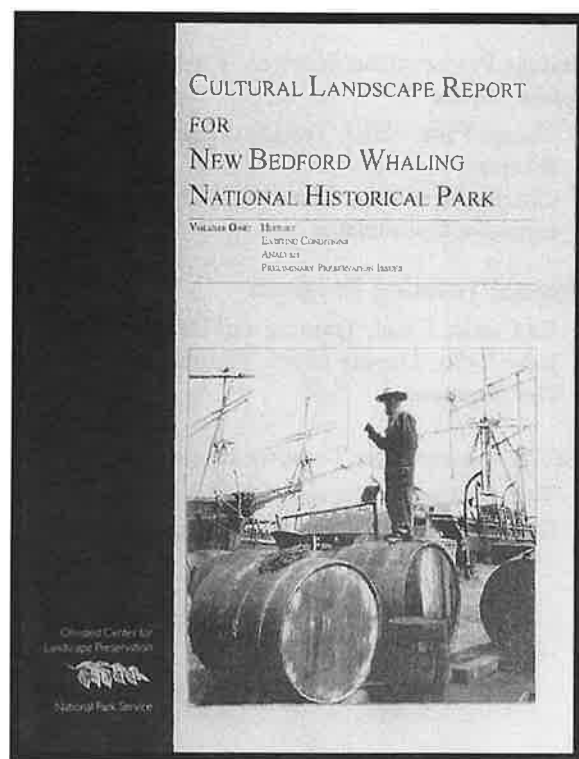
- Bridget Allen, Intern
- Christine Arato, Intern
- Marybeth Hanley, Intern
- Lee Terzis, Intern
- Heidi Werner, Intern

In June 1998, Regional Director Marie Rust asked Nora Mitchell to work on establishing a Conservation Study Institute in partnership with Marsh-Billings-Rockefeller NHP. The Institute was established to further the park's educational and outreach initiatives on conservation stewardship and, as a national program, to enhance leadership in the field of conservation. In collaboration with academic and nonprofit partners, the Institute provides a forum for the National Park Service, the conservation community, and the public to discuss conservation history, contemporary issues and practice, and future directions for the field.

Since that time, Charles Pepper has been Acting Director of the Olmsted Center.

We would like to recognize Al Farrugio, Horticulturist, Statue of Liberty, who worked with the Olmsted Center as Acting Deputy Director from August 1998 until January 1999. Al provided tremendous support to the organization in this capacity and his daily contributions to the Center's work will be missed.

1998 Technical Assistance Projects



FOCUS ON RESEARCH:

CULTURAL LANDSCAPE REPORT FOR NEW BEDFORD WHALING NATIONAL HISTORICAL PARK

New Bedford, a maritime city located on Buzzard's Bay in southeastern Massachusetts, served as homeport to the largest American whaling fleet and the center of the nation's whaling industry during the nineteenth century. Despite the collapse of the whaling industry during the decades following the Civil War, New Bedford continues to symbolize the whaling heritage of this country.

New Bedford Whaling National Historical Park was established in 1996 to illustrate and interpret the important contributions of the whaling industry to the economic, social, and environmental history of the United States. The park, which includes the New Bedford National Historic Landmark District, encompasses the commercial core of the historic whaling community.

In conjunction with the development of the park's General Management Plan, this Cultural Landscape Report (CLR) documents the history and evaluates the significance and integrity of the site. The CLR consists of three sections: a rigorously researched site history and documentation of existing conditions; a careful analysis of the site's historic significance and integrity; and a summary of preservation issues. The CLR is being used in park planning and development and to guide the stewardship and interpretation of the park's cultural landscape.

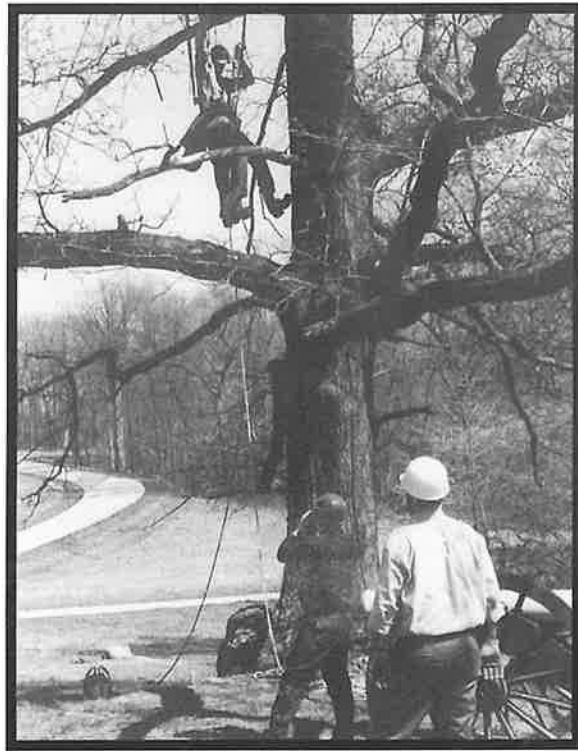
STEWARDSHIP: SUSTAINABLE PRESERVATION MAINTENANCE

Preservation maintenance projects involve a wide range of on-site stabilization and resource protection projects. These projects are often urgently needed to address immediate health and safety issues or serious deterioration problem. Preservation maintenance projects may include pruning of hazardous trees, orchard stabilization, hedge rejuvenation, tree planting, emergency propagation, trail rehabilitation, or other physical work needed to address urgent preservation maintenance needs.

- **Emergency Stabilization Field Work**
Emergency stabilization work addresses immediate health and safety or critical resource deterioration issues.
- **Cyclic Preservation Maintenance**
Cyclic preservation maintenance work addresses minor landscape maintenance projects that are needed on a cyclic basis rather than a routine basis.
- **Resource Protection Work**
Resource protection work improves the condition of deteriorated landscape features, often resulting from deferred maintenance.
- **Treatment Implementation**
Treatment implementation includes landscape construction projects that have been planned and designed through a CLR Treatment Plan.

- Acadia National Park
Hazardous Tree Stabilization
- Adams National Historic Site
Critical Orchard Maintenance
Hazardous Tree Stabilization
- Edison National Historic Site
Hazardous Tree Stabilization
- Eisenhower National Historic Site
Historic Orchard Stabilization
- Gateway National Recreation Area, Fort Wadsworth
Prevent Vegetation Damage to Historic Fortifications
- Gettysburg National Military Park
Specimen Tree Pruning
- Hampton National Historic Site
Hazardous Tree Stabilization
- Hopewell Furnace National Historic Site
Historic Orchard Stabilization
- Morristown National Historic Site
Critical Orchard Maintenance
- New River Gorge National River
Cultural Landscape Rehabilitation
Historic Orchard Stabilization
- Sagamore Hill National Historic Site
Hazardous Tree Stabilization
- Shenandoah National Park, Judd Garden
Historic Garden Stabilization
- Statue of Liberty National Monument
Specimen Tree Pruning
- Statue of Liberty National Monument, Ellis Island
Prevent Vegetation Damage to Historic Structures
- Weir Farm National Historic Site
Historic Orchard Restoration
- Wright Brother's Memorial, Wright-Patterson Air Force Base (with Denver Service Center)
Landscape Rehabilitation
- Historic Plant Preservation
Propagation and Nursery Cultivation of Historic Plants for Northeast Region Parks

1998 Technical Assistance Projects



FOCUS ON STEWARDSHIP:

GETTYSBURG NATIONAL MILITARY PARK: PROTECTING AND MAINTAINING HISTORIC SPECIMEN TREES

A Northeast Region multi-park crew of arborists and landscape maintenance staff was mobilized by the Olmsted Center to stabilize deterioration and improve the condition of historic trees in the Soldiers' National Cemetery at Gettysburg National Military Park. Work focussed on removing dead and damaged limbs, reinforcing structural stability, improving health and reducing hazardous conditions of the trees.

As with all of the work coordinated by the Olmsted Center, training was provided to participants. Training during this project included field demonstrations and hands-on practice in tree work safety and aerial rescue procedures. In addition, participants in the Northeast Region Arborist Training Program worked alongside professional arborists to gain field experience in hazardous tree stabilization and pruning.

RESEARCH: IDENTIFICATION, INVENTORY AND DOCUMENTATION

Historical research is used to evaluate the significance and integrity of cultural landscapes and to further knowledge regarding the importance of individual landscape features.

• Cultural Landscapes Inventory

The Cultural Landscapes Inventory (CLI) is a baseline survey and database that identifies and evaluates the location, historical development, existing conditions and management of cultural landscapes in the National Park Service. It is also used to determine National Register eligibility for previously undocumented cultural landscapes.

• Cultural Landscape Report

A Cultural Landscape Report (CLR) is the primary research document for a landscape. The research section of a CLR includes narrative chronological history, analysis of integrity and significance based on National Register criteria and documentation of existing conditions.

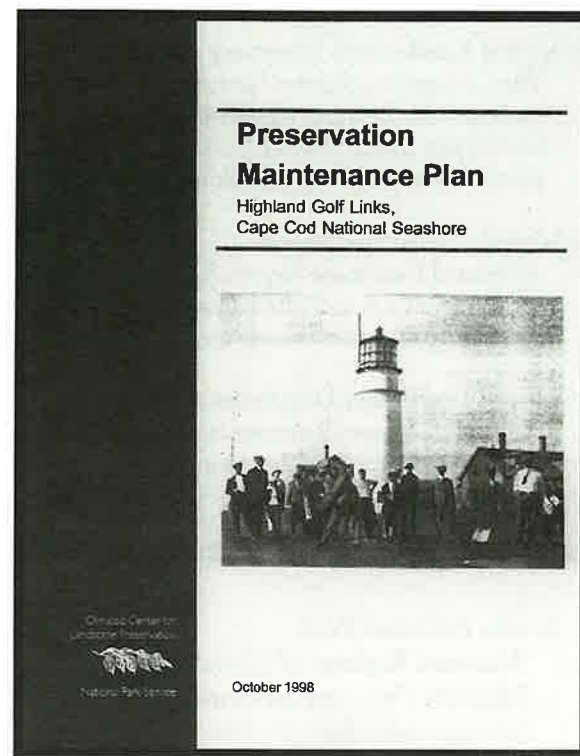
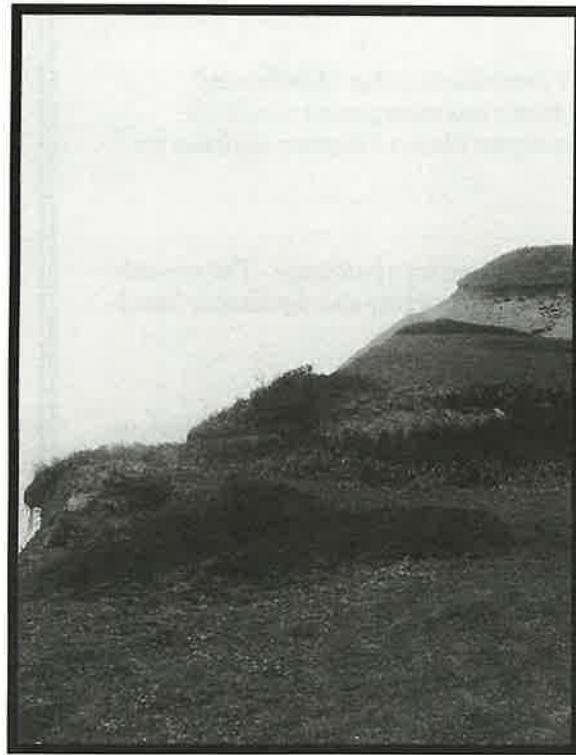
• Cultural Landscape Documentation

Cultural landscape documentation includes a broad range of information needed to answer questions about a landscape's history to inform planning or management decisions and includes National Register evaluations.

- Acadia National Park
National Register of Historic Places
Multiple Property Documentation and
Nominations for:
Historic Hiking Trails System
Historic Motor Road System
Blackwoods Campground (with
Public Archeology Lab)
Seawall Campground (with Public
Archeology Lab)
- Boston Harbor Islands National Recreation Area
Cultural Landscape Report, Phase
One: Resource List
- Fort Stanwix National Monument
Cultural Landscape Inventory
- Gateway National Recreation Area,
Sandy Hook Unit
Cultural Landscape Report for Proving
Ground and Wartime Expansion
Areas: Fort Hancock (with Norma
Williams)
- Longfellow National Historic Site
Vol. Two: Analysis of Integrity and
Significance, final draft (with Shary Page
Berg).
- New Bedford Whaling National Historical
Park
Cultural Landscape Report Vol. One:
History, Existing Conditions, Analysis,
and Preliminary Preservation Issues
- Petersburg National Battlefield
Cultural Landscape Report for the Crater
Battlefield
Cultural Landscape Report for
Appomattox Manor: City Point Unit
- Women's Rights National Historical Park,
Stanton House
Cultural Landscape Inventory
- Vanderbilt Mansion National Historic Site
Historic Structures Report

This year, the American Society for Landscape Architects presented the Olmsted Center and the Arnold Arboretum with a Merit Award in Research for *Fairsted, A Cultural Landscape Report for the Frederick Law Olmsted NHS, Vol One: Site History* by Cynthia Zaitzevsky. This joint publication is a success due to the outstanding contributions from many collaborators.

1998 Technical Assistance Projects



FOCUS ON PLANNING:

PRESERVATION MAINTENANCE PLAN: HIGHLAND GOLF LINKS, CAPE COD NATIONAL SEASHORE

The Highland Historic District at Cape Cod National Seashore is a significant surviving example of the late 19th-early 20th century era of tourism on Cape Cod and is eligible for listing on the National Register of Historic Places. The Highland Links, a 9-hole golf course laid out in 1898, was originally part of a larger recreation complex that complemented the Highland House Hotel. The hotel was one of a series of large resorts on Cape Cod, built to accommodate railroad travelers. The historic resort furnished sleeping and dining accommodations along with recreational facilities such as a baseball diamond, skating rink, pool rooms, a bowling alley, and a golf course. Of these recreational amenities, only the Highland Golf Links remains.

This Preservation Maintenance Plan was prepared to provide guidance on current and future care of the historic landscape. Recommendations are provided to protect the character and integrity of this surviving historic resource. The plan also includes research and documentation of extant historic landscape features and the historic character of the golf links; condition assessment of important character-defining features; recommendations for the stabilization and/or preservation of historic landscape resources; and detailed maintenance procedures designed to guide ongoing landscape preservation activities.

PLANNING: ALTERNATIVES, EVALUATION AND PLAN DEVELOPMENT

The Olmsted Center encourages responsible stewardship that is based upon thoroughly researched, detailed and documented preservation planning efforts. Guidelines and treatment options provided through this work ensure that implementation of future treatment and maintenance projects proceed in an informed manner, complementing the management and preservation goals of the resource.

- **Cultural Landscape Report**
The treatment planning section of a Cultural Landscape Report (CLR) includes treatment alternatives, recommendations, plans, schematic design, or construction documents for the preservation, rehabilitation or restoration of an historic landscape.
- **Project Planning and Impact Assessment**
Project planning includes a wide range of projects that incorporate cultural landscape information into design and management decisions, including pre-construction planning.
- **Rehabilitation Guidelines**
Rehabilitation guidelines are general recommendations that establish parameters for decision-making rather than providing individual design solutions.
- **Preservation Maintenance Plan**
Preservation Maintenance Plans include inventory and mapping, field inspections, record keeping and work procedures for an entire landscape or collection of specific features.

- Cape Cod National Seashore
Preservation Maintenance Plan for Highland Golf Links
- Golden Gate National Recreation Area
Landscape Stabilization and Maintenance Guidelines for Alcatraz Island
- Longfellow National Historic Site
Cultural Landscape Report, Vol Three: Treatment Plan, Draft
Pre-planning for Longfellow Carriage House Line-Item Construction Project (with Cultural Resources Center)
- Petersburg National Battlefield
Cultural Landscape Report for the Fish-Hook Fortifications, Phase One, Draft
- Wright - Patterson Air Force Base, Wright Brothers Memorial
Vol. Two: Treatment Plan and Construction Drawings
- Roger Williams National Monument
Integrated Pest Management Plan
- Sagamore Hill National Historic Site
Preservation Maintenance Plan
- Weir Farm National Historic Site
Preservation Maintenance Plan