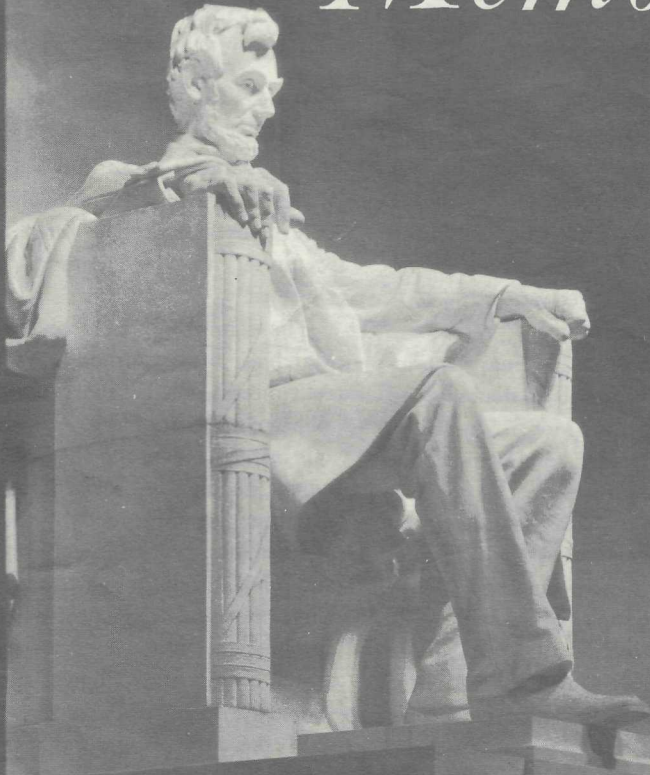
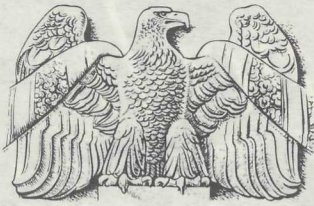


# *Lincoln Memorial*



WASHINGTON, D. C.



# Lincoln

## MEMORIAL

*In this temple as in the hearts of the people for whom he saved the Union, the memory of Abraham Lincoln is enshrined forever.*

This memorial honors the virtues of tolerance, honesty, and constancy in the human spirit. The man whose likeness presides over this marbled hall used these virtues in the practice of statecraft. And from it flowed everlasting benefit to his nation and an enduring inspiration to his countrymen.

Had Lincoln been an ordinary president—even an ordinary hero—an ordinary monument would have sufficed and no doubt would have been quickly built. More than half a century elapsed, however, before an appropriate memorial to the man arose in the Nation's Capital. It seemed as if time stood aside until coming generations could fashion the perfect tribute to their benefactor. The memorial is neither temple, palace, nor tomb, but partakes something of all. It seems to gather within its marble walls the spirit of the man's character, his belief that all people should be free, free to think and express themselves, and free to apply their natural talents and ambitions in lawful enterprise.

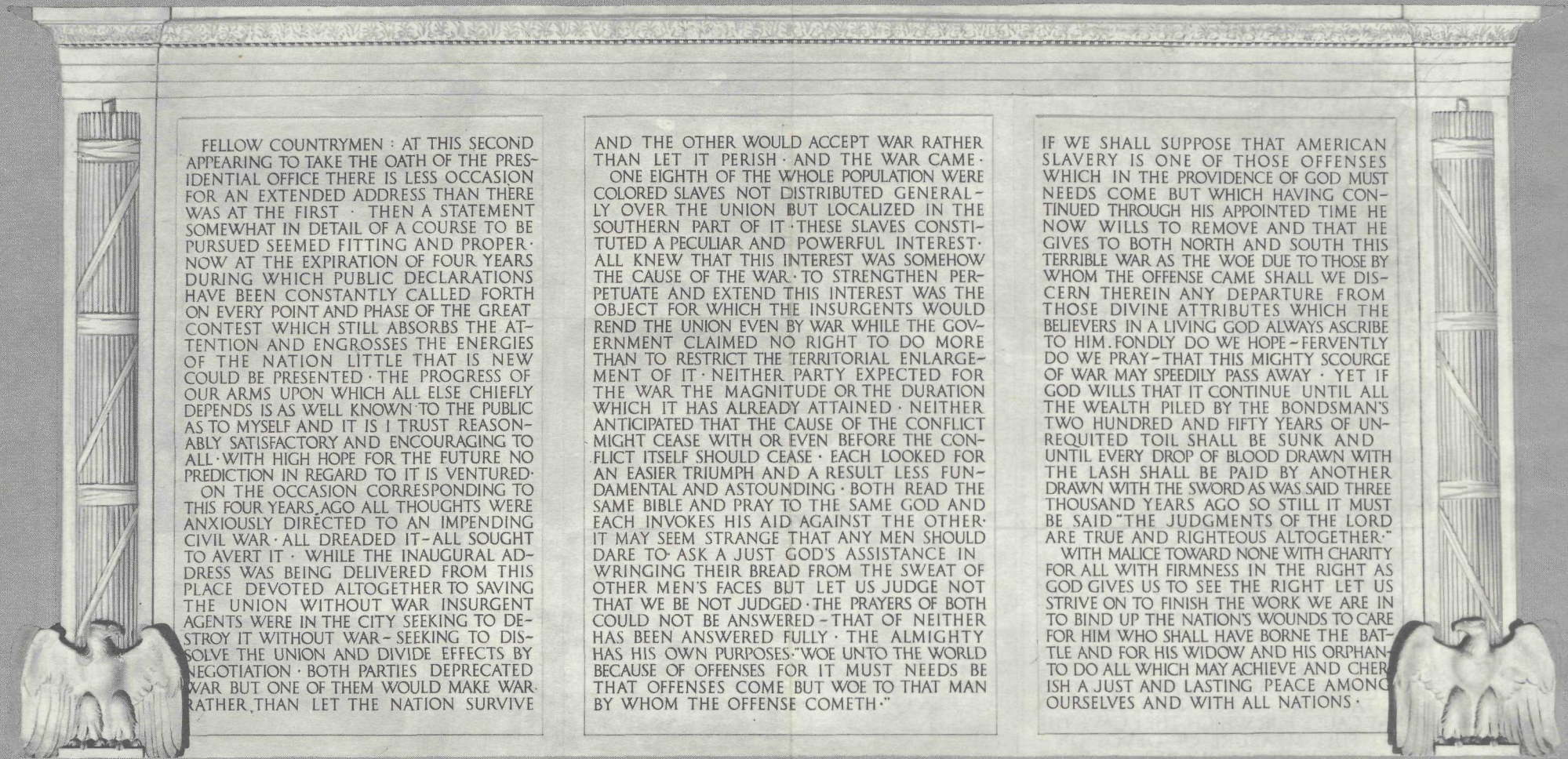
### *Building the Memorial*

The first organized effort to erect a monument to Lincoln in Washington occurred 2 years after his death. An act of Congress approved March 29, 1867, incorporated the Lincoln Monument Association. The association appealed for subscriptions and prepared plans for a monument. But there was no practical accomplishment from this effort. The years passed. Although numerous subsequent ef-

forts were made to secure a memorial, it was not until February 1911 that Congress passed the legislation that procured it. In that act, Congress provided for a "Commission to secure plans and designs for a Monument or Memorial to the memory of Abraham Lincoln."

The commission held its first meeting on March 4, 1911. Almost a year later, at its 10th meeting on February 3, 1912, it decided to locate the memorial in Potomac Park on the axis of the Capitol and the Washington Monument, facing east toward them. This site had been recommended by the Commission of Fine Arts. Upon invitation, Henry Bacon and John Russell Pope, architects of New York City, prepared designs for a structure. The commission selected Henry Bacon to prepare a final design, and Congress approved this on January 29, 1913.

Workmen broke ground at the site selected for the memorial on February 12, 1914. The cornerstone was laid a year later. As work progressed on the structure, the commission selected Daniel Chester French to sculpture the Lincoln statue and Jules Guerin to design and execute murals for the end walls and the ornamentation on the bronze ceiling beams. After more than 6 years of work at the site, the completed memorial was dedicated in a ceremony on Memorial Day, May 30, 1922. Chief Justice William Howard Taft, as chairman of the commission, presented the memorial to President Harding who accepted it for the United States.



*Lincoln's Second Inaugural Address—North Wall of the Memorial.*

### *Architecture of the Memorial*

The memorial is of white Colorado-Yule marble. Its architectural lines are classical. The plan is similar to that of the Parthenon, the temple to the Goddess Athena on the Acropolis in Athens. The outer columns are Doric; the columns inside the great hall are Ionic. Together they represent Greek art at its perfection. The memorial building would not be out of place if set down among the great antiquities of Greece and Rome. Its

beauty and purity of design equal the best of the ancient world.

Within the broad framework of classical design, the structure has a motif that symbolizes the Union of the States. Thirty-six columns, representing the 36 States in the Union at the time of Lincoln's death, surround the walls of the Memorial Building. A frieze above the colonnade names these States. On the attic walls above the frieze are the names of the 48 States comprising the Union at the

time the memorial was built. Ernest C. Bairstow of Washington carved the frieze and the decorations of the attic wall.

Within the memorial chamber are three commemorative features, a colossal seated statue of Lincoln and two huge inscribed stone tablets. The marble statue of Lincoln occupies the place of honor. It is centrally located near the back of the chamber and faces the Washington Monument and the Capitol. A row of columns separates this

central area from either end of the huge chamber. On the north wall inscribed in stone is Lincoln's Second Inaugural Address; on the south wall, similarly inscribed, is the Gettysburg Address.

The decorations of the Gettysburg and Second Inaugural Addresses were done under the direction of Daniel Chester French by Miss Evelyn Beatrice Longman, his assistant.

There are some structural features of the memorial not common in modern buildings.

The columns are not vertical but are tilted slightly inward. The four corner columns have the greatest incline. The outer facade of the building above the columns also is tilted inward, but less so than the columns. The walls of the building similarly incline inward, but less than either the colonnade and facade. This structural characteristic eliminates the optical illusion of a building bulging at the top.

### *Facts and Figures about the Building*

#### *Retaining Wall of Terrace Approach:*

Height, 14 feet.

Length, 257 feet, east and west sides; width, 187 feet, 4 inches, north and south sides.

#### *Foundation:*

44 to 65 feet to bedrock below original grade.

#### *Height:*

80 feet above top of foundation.

99 feet above grade at foot of terrace walls.

#### *Colonnade:*

Length, 189 feet.

Width, 118 feet, 8 inches.

Number of columns, 36.

Height of columns to cap, 44 feet.

Diameter of column at base, 7 feet, 4 inches.

Number of stone drums in column, 11.

#### *Ionic Columns Inside Memorial:*

Height, 50 feet.

Diameter at base, 5 feet, 6 inches.

#### *Central Chamber with Seated Lincoln:*

Width, 58 feet.

Depth, 74 feet.

#### *Two End Chambers:*

Width, 63 feet.

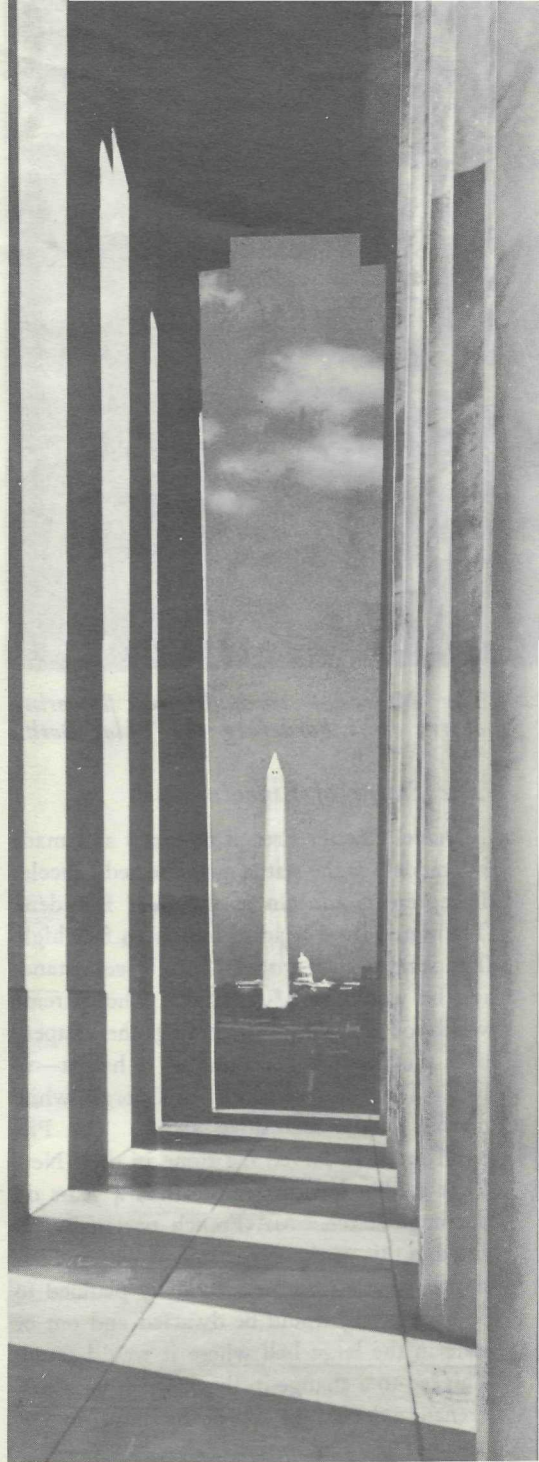
Depth, 36 feet, 8 inches.

Cost of Memorial Building, \$2,957,000.

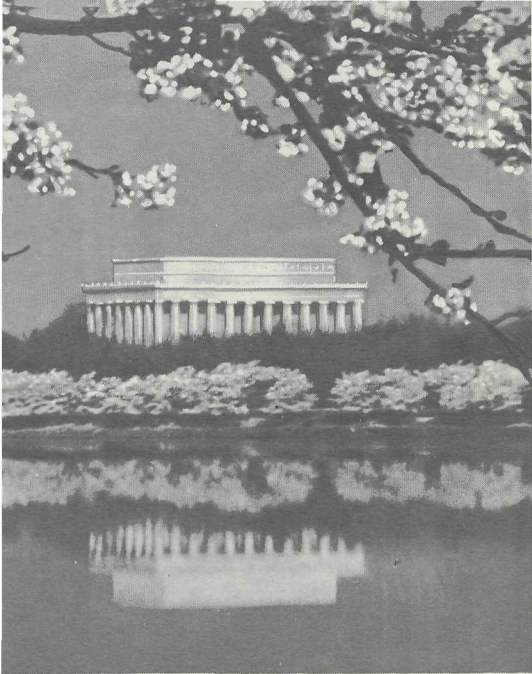
Cost of Lincoln Statue, \$88,400.

The interior walls are Indiana limestone. The ceiling, 60 feet above the floor, includes bronze girders ornamented with laurel and oak leaves. The panels between the girders are Alabama marble saturated with paraffin to produce translucency. The floor and the wall base are pink Tennessee marble.

The 2 tripods, 1 on either side of the steps to the entrance of the memorial, are 9 feet high, each cut from a single block of pink Tennessee marble. The Piccirilli brothers of New York carved the tripods.



*Washington Monument and Capitol from south colonnade of Lincoln Memorial.*



*The Memorial through the flowering cherry trees bordering the Tidal Basin.*

### *The Statue of Lincoln*

Daniel Chester French designed and made the model for the statue of the seated Lincoln. It represents Lincoln as the War President. The statue from head to foot is 19 feet high. The scale is such that if Lincoln were standing he would be 28 feet tall. The extreme width of the statue, including the drapery over the chair, is the same as its height—19 feet. There are 28 blocks of Georgia white marble in the sculptured statue. The Piccirilli brothers carved the stone in their New York studio, spending more than 4 years on the huge statue. Mr. French personally assisted in this work. Experiments with models showed that the statue, originally planned to be 10 feet tall, would be dwarfed and out of scale in the large hall where it would stand. This led to a change in the contract with Mr. French to double the size of the statue, so that it would be 19 or 20 feet tall.

The statue rests on an oblong pedestal of Tennessee marble 10 feet, 3 inches high, 18 feet, 1 inch wide, and 19 feet, 2 inches deep at the base. This in turn rests on a platform of Tennessee marble.

### *The Murals*

The two murals on the north and south walls represent allegorically principles of conduct and thought evident in the life of Abraham Lincoln. These murals, painted by Jules Guerin, are each 60 feet long and 12 feet high. Each piece of canvas weighed about 600 pounds; approximately 150 pounds of paint were used on each. The mural above the Gettysburg Address on the south wall features an Angel of Truth freeing a slave. On the left and right, groups represent Justice and Immortality. The mural above the Second Inaugural Address on the north wall features the unity of the North and South. On the left and right, groups represent Fraternity and Charity.

### *Administration*

The memorial is open daily from 8 a.m. to midnight, closing only on Christmas Day. It is administered by the National Park Service, U.S. Department of the Interior. Address all inquiries to the Superintendent, Central National Capital Parks, 900 Ohio Dr. SW., Washington, D.C. 20242.

The National Park System, of which this area is a unit, is dedicated to conserving the great natural, historical, and recreational places of the United States for the benefit and enjoyment of all the people.

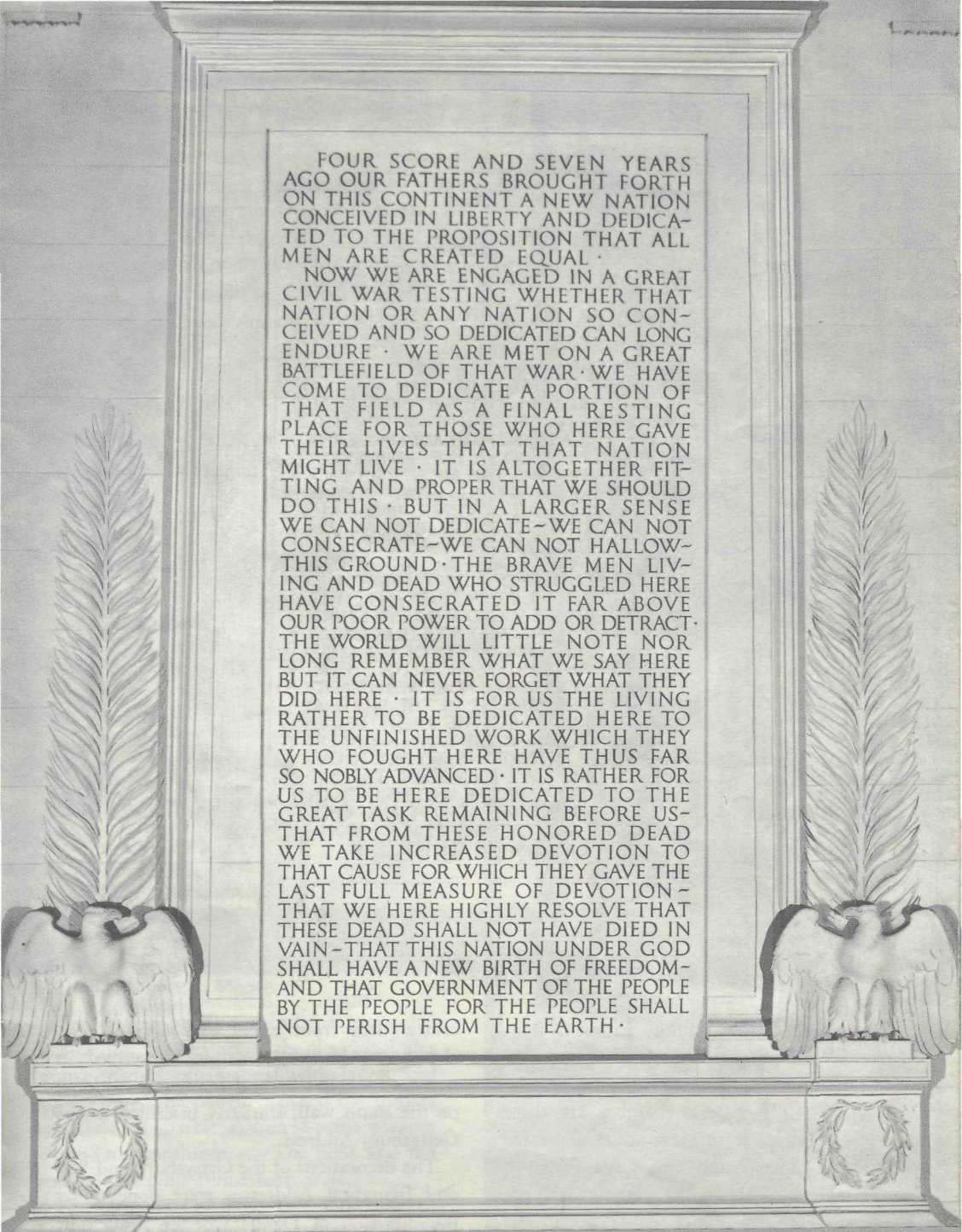
THE DEPARTMENT OF THE INTERIOR—The Nation's principal natural resource agency—has a special obligation to assure that our expendable resources are conserved, that our renewable resources are managed to produce optimum benefits, and that all resources contribute to the progress and prosperity of the United States, now and in the future.



## U.S. DEPARTMENT OF THE INTERIOR

### NATIONAL PARK SERVICE





FOUR SCORE AND SEVEN YEARS  
AGO OUR FATHERS BROUGHT FORTH  
ON THIS CONTINENT A NEW NATION  
CONCEIVED IN LIBERTY AND DEDICA-  
TED TO THE PROPOSITION THAT ALL  
MEN ARE CREATED EQUAL ·

NOW WE ARE ENGAGED IN A GREAT  
CIVIL WAR TESTING WHETHER THAT  
NATION OR ANY NATION SO CON-  
CEIVED AND SO DEDICATED CAN LONG  
ENDURE · WE ARE MET ON A GREAT  
BATTLEFIELD OF THAT WAR · WE HAVE  
COME TO DEDICATE A PORTION OF  
THAT FIELD AS A FINAL RESTING  
PLACE FOR THOSE WHO HERE GAVE  
THEIR LIVES THAT THAT NATION  
MIGHT LIVE · IT IS ALTOGETHER FIT-  
TING AND PROPER THAT WE SHOULD  
DO THIS · BUT IN A LARGER SENSE  
WE CAN NOT DEDICATE—WE CAN NOT  
CONSECRATE—WE CAN NOT HALLOW—  
THIS GROUND · THE BRAVE MEN LIV-  
ING AND DEAD WHO STRUGGLED HERE  
HAVE CONSECRATED IT FAR ABOVE  
OUR POOR POWER TO ADD OR DETRACT ·  
THE WORLD WILL LITTLE NOTE NOR  
LONG REMEMBER WHAT WE SAY HERE  
BUT IT CAN NEVER FORGET WHAT THEY  
DID HERE · IT IS FOR US THE LIVING  
RATHER TO BE DEDICATED HERE TO  
THE UNFINISHED WORK WHICH THEY  
WHO FOUGHT HERE HAVE THUS FAR  
SO NOBLY ADVANCED · IT IS RATHER FOR  
US TO BE HERE DEDICATED TO THE  
GREAT TASK REMAINING BEFORE US—  
THAT FROM THESE HONORED DEAD  
WE TAKE INCREASED DEVOTION TO  
THAT CAUSE FOR WHICH THEY GAVE  
THE LAST FULL MEASURE OF DEVOTION—  
THAT WE HERE HIGHLY RESOLVE THAT  
THESE DEAD SHALL NOT HAVE DIED IN  
VAIN—THAT THIS NATION UNDER GOD  
SHALL HAVE A NEW BIRTH OF FREEDOM—  
AND THAT GOVERNMENT OF THE PEOPLE  
BY THE PEOPLE FOR THE PEOPLE SHALL  
NOT PERISH FROM THE EARTH ·

*Lincoln's Gettysburg Address—South Wall of the Memorial*

