



# Exploring the Trail

## More Information

**National Park Service**  
National Trails System  
Salt Lake City  
P.O. Box 45155  
324 South State Street  
Salt Lake City, UT 84145  
www.nps.gov/poex

**Bureau of Land Management**  
National Historic Trails  
1501 North Poplar  
Casper, WY 82601  
www.blm.gov

**USDA Forest Service**  
Intermountain Region  
Federal Building  
324 25th Street  
Ogden, UT 84401  
www.fs.fed.us

**USDA Forest Service**  
Pacific Southwest Region  
1323 Club Drive  
Vallejo, CA 94592  
www.fs.fed.us

**Pony Express Trail Association**  
139 San Antonio Way  
Sacramento, CA 95819

**National Pony Express Association**  
P.O. Box 236  
Pollock Pines, CA 95726  
www.xphomestation.com/hpea.html

**Internet Information**  
www.nps.gov/poex  
www.nps.gov/poex/hrs/hrs.htm  
www.xphomestation.com  
www.americanwest.com/trails  
www.ci.st-joseph.mo.us/pony.html  
www.usps.com/history  
www.sfmuseum.org  
www.ponyexpress.org

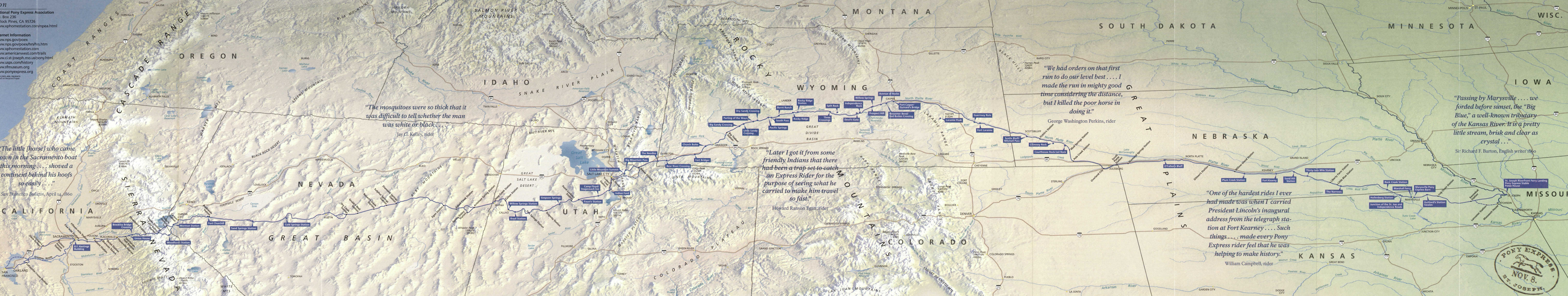
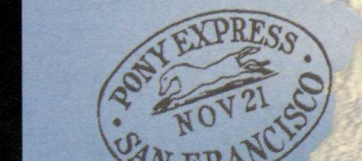
**USDA Forest Service**  
Intermountain Region  
Federal Building  
324 25th Street  
Ogden, UT 84401  
www.fs.fed.us

**USDA Forest Service**  
Pacific Southwest Region  
1323 Club Drive  
Vallejo, CA 94592  
www.fs.fed.us

**Pony Express Trail Association**  
139 San Antonio Way  
Sacramento, CA 95819

Pacific Ocean

**Pony Express Trail**  
Designated routes of the Pony Express National Historic Trail  
Additional routes  
Major sites  
Additional sites  
Route of Pony Express Trail based on information provided by Joe Nardone.



*"The little [horse] who came down in the Sacramento boat this morning . . . shoved a continent behind his hoofs so easily . . ."*  
San Francisco Bulletin, April 14, 1860

*"The mosquitoes were so thick that it was difficult to tell whether the man was white or black . . ."*  
Jay G. Kelley, rider

*"Later I got it from some friendly Indians that there had been a trap set to catch an Express Rider for the purpose of seeing what he carried to make him travel so fast."*  
Howard Ranson Egan, rider

*"We had orders on that first run to do our level best . . . I made the run in mighty good time considering the distance, but I killed the poor horse in doing it."*  
George Washington Perkins, rider

*"One of the hardest rides I ever had made was when I carried President Lincoln's inaugural address from the telegraph station at Fort Kearney . . . Such things . . . made every Pony Express rider feel that he was helping to make history."*  
William Campbell, rider

*"Passing by Marysville . . . we forded before sunset, the "Big Blue," a well-known tributary of the Kansas River. It is a pretty little stream, brisk and clear as crystal . . ."*  
Sir Richard F. Burton, English writer 1860

