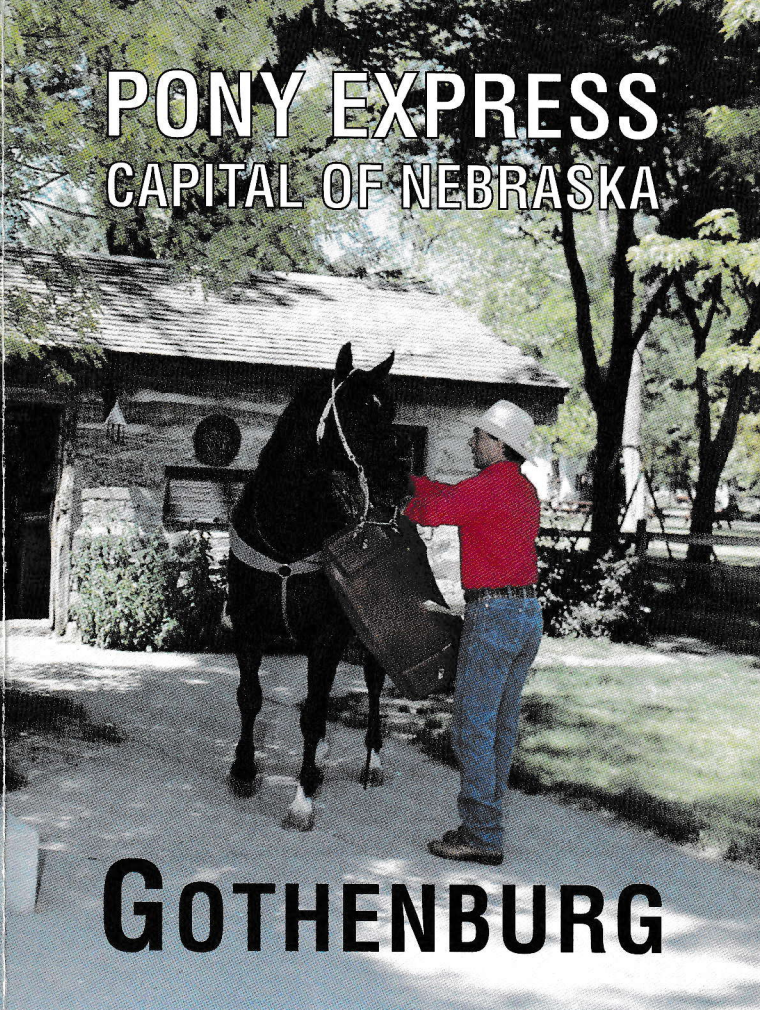
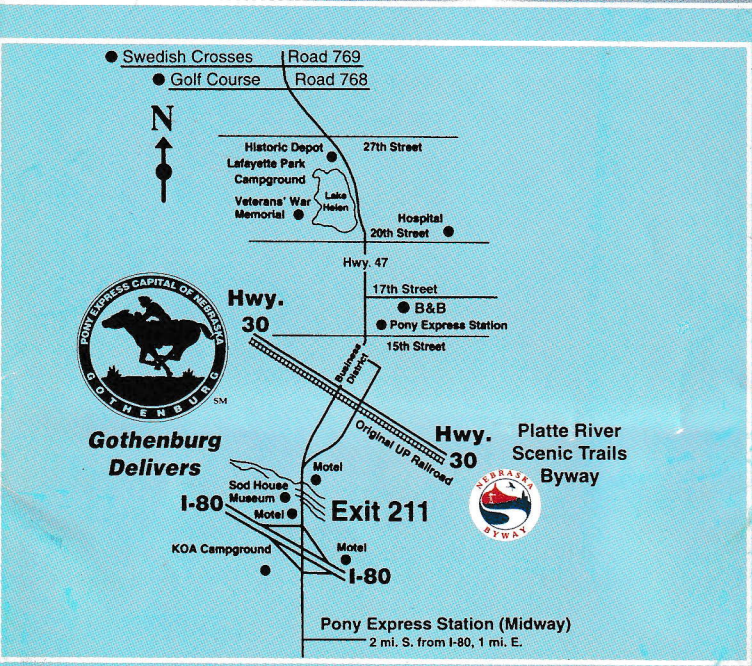


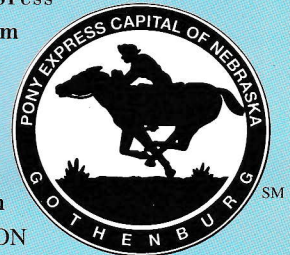
PONY EXPRESS CAPITAL OF NEBRASKA



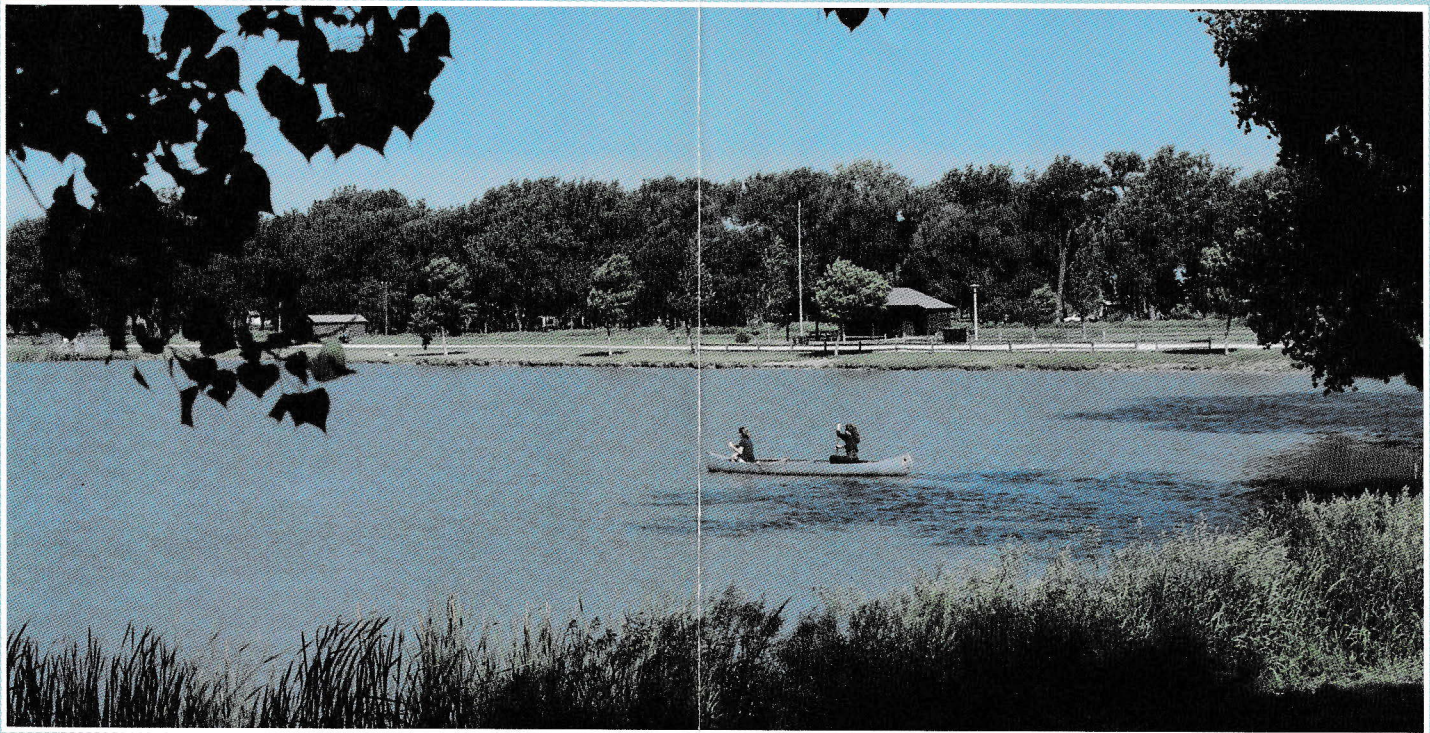
GOTHENBURG



Home to two Pony Express stations – the Midway on its original ranch site south of Gothenburg and the Sam Macchette station, located in Ehmen Park, just 2 miles north of I-80. The station in the park was used as a fur trading post / ranch house along the Oregon Trail southwest of Gothenburg before it was used as a Pony Express station in 1860-61. It was moved from its original site and rebuilt in Ehmen Park in 1931. The museum has been open to the public since the early 1950s. Hours are 8 am to 8 pm in summer months and 9 am to 6 pm in May and September. FREE ADMISSION



Gothenburg Area Chamber of Commerce
 Box 263 -- 11th & Lake Avenue
 Gothenburg, Nebraska 69138
 (308)537-3505 --- 1-800-482-5520
 www.ci.gothenburg.ne.us e-mail: gothenburg@alltel.net

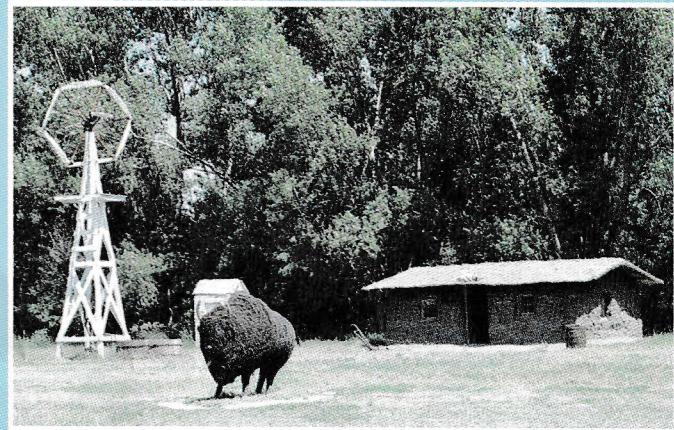


LAKE HELEN RECREATION AREA

GOTHENBURG, an All-America City, is a friendly, charming community. Comfortable overnight accommodations are available right off I-80 at Exit 211. Tree-shaded parks feature picnic areas and playgrounds. Fish, swim or barbecue at scenic Lake Helen. Campsites and showers are located at Lafayette Park, adjacent to the lake. Enjoy the paved walking path that intersects the Lake Helen area.



SOD HOUSE MUSEUM: This memorial to the first settlers in the area features a barn, sod house, windmills and life-sized barbed wire sculptures. The barn-shaped museum houses memorabilia and photographs taken during the pioneer era. A huge plow graces the front yard of the museum area, representing one of the few tools settlers brought west.



Located behind the museum, this sod house is a replica of pioneer homes. The sparse interior reflects the hard times faced by pioneer families. A barbed wire buffalo and horse and Indian lend a realistic flavor to the site. Take Exit 211 off I-80 and drive one block north to relive scenes from our pioneer heritage. **FREE ADMISSION.**



WILD HORSE GOLF CLUB: Enjoy golf on this new, nationally rated 18-hole links course located 2 miles northwest of Gothenburg. It features huge greens, wide fairways bordered by native grass and about sixty bunkers. A driving range and practice greens are available on this public access course.



SWEDISH MARKERS OF THE PAST: Three unusual and artistic crosses wrought from Swedish steel by a Swedish blacksmith to mark the graves of his grandchildren. A short drive (two miles north and two miles west) from Gothenburg will take you to a little corner of Dawson County that is forever Sweden.



ORIGINAL LINCOLN HIGHWAY: Construction of the 3,385 mile coast-to-coast Lincoln Highway, from New York to San Francisco, began in 1914. It followed the section lines north of the Platte River, crossed over the river bridge at Gothenburg and proceeded west on the south side. In 1930 traffic was rerouted onto the new Highway 30, now the Platte River Scenic Trails Byway.



VETERANS' WAR MEMORIAL: Located on the west shore of Lake Helen, this memorial is a reminder of sacrifices made by veterans and their families of all wars. The names listed commemorate local residents who gave their lives.



Historic Home by James Heaver

WALKING TOUR OF HISTORIC GOTHENBURG: Take your own personal tour down beautiful tree-lined streets, graced with lovely older homes and buildings. Homes on this tour include one built in 1905 as a wedding present. Take the tour and find out the long forgotten history. A detailed brochure is available.

**100 Motel Rooms, Bed & Breakfast and
96 Campground Sites Available**