



San Francisco Maritime National Historical Park

National Park Service

U.S. Department of the Interior



The San Francisco Maritime National Historical Park

preserves and interprets the saga of the people and ships that helped shape the development of the Pacific Coast. The Park offers several attractions, including artifacts and photographs in the museum building, as well as historic vessels along the San Francisco waterfront. All of these areas are managed by the National Park Service.

Museum Exhibits

The exhibits in the museum building — located just across from Ghirardelli Square — span more than a century of West Coast seafaring history, from the 1840s to the modern era. Parts of original San Francisco Bay vessels and numerous ship models are displayed on the main floor. The Steamship Gallery, also on the main floor, offers a comprehensive display of the technology and history of steamships on this coast. Upstairs, exhibits of artifacts and photographs recall the days of the California Gold Rush, Cape Horners, whaling, and classic yachts. Here visitors experience first-hand the lives of the men and women who built, supplied, and sailed these ships when waterways were still the major means of transportation. Also on the second floor is the Albert Harmon Gallery, which features thematic displays on a rotating basis.

San Francisco's Historic Ships

A major highlight of the Park is the historic ship collection. Five historic merchant ships berthed at Hyde Street Pier vividly recall the early era of West Coast maritime commerce. Another highlight of the Hyde Street Pier is the working small-boat shop.

The museum's steam schooner *Wapama* can be viewed in Sausalito at the Bay Model Visitor Center. Docked along the San Francisco waterfront are two World War II vessels. The submarine *Pampanito* is operated by the National Maritime Museum Association and is berthed at Pier 45. The National Liberty Ship Memorial operates the Liberty Ship *Jeremiah O'Brien*, docked at Pier 3, Fort Mason. Seven of San Francisco's historic ships are National Historic Landmarks.

Aquatic Park

While visiting the Park, take time to join the four million people per year who enjoy the bayside scenery in Aquatic Park. Picnic here, sunbathe, swim or fish, board the cable car. Or stroll the Golden Gate Promenade, a 3 1/2 mile scenic walk, which begins here and follows the shoreline through Fort Mason to Fort Point National Historic Site underneath the Golden Gate Bridge.

Museum Collections

The Park's three research collections are maintained at Fort Mason Center (see map). Located on the third floor of Building E, the J. Porter Shaw Library houses over 12,000 volumes as well as extensive holdings of oral history interviews, periodicals, and ephemeral material. The Historic Documents Department manages collections of archives, manuscripts, logbooks, 120,000 sheets of ship plans, and over 250,000 historic photographs. These research collections are accessible to the public through the library's reference staff. On the ground floor of Building E, the Collections Management Department houses maritime artifacts and fine arts. Researchers may view portions of this collection by appointment only.

The Maritime Store

Located at the entrance of Hyde Street Pier, The Maritime Store offers a comprehensive selection of books, posters, cards, and gifts of the sea covering many subjects including maritime history and fiction, boat building, sailing, navigation, and marine wildlife. Proceeds help support educational programs and conservation projects in all areas of the Park.

Public transit is the most convenient way to get to San Francisco Maritime National Historical Park, Aquatic Park, and San Francisco's historic ships. Parking is scarce.

Any of these convenient bus routes currently service the Museum Building, Aquatic Park and Hyde Street Pier:
19—Polk
30—Stockton
32—Embarcadero
42—Downtown Loop
47—Van Ness/Potrero
49—Van Ness/Mission
60—Powell and Hyde cable car

To reach *Pampanito*:
15—Third Street
19—Polk
32—Embarcadero
39—Coit Tower
42—Downtown Loop
59—Powell and Mason cable car

To reach *Jeremiah O'Brien* and the J. Porter Shaw Library (Fort Mason):
Laguna Street Entrance: 28—19th Avenue
Franklin Street Entrance: 19—Polk
30—Stockton
42—Downtown Loop
47—Van Ness/Potrero
49—Van Ness/Mission

Museum Building
Foot of Polk Street
Wednesday-Sunday
May-October:
10 a.m.-6 p.m.
November-April:
10 a.m.-5 p.m.
Ranger-guided tours and self-guided tours available. Wheelchair accessible. Information: (415) 556-2904

J. Porter Shaw Library
Building E, Fort Mason
Thursday and Friday:
1 p.m.-5 p.m.
Saturday:
10 a.m.-5 p.m.
Wheelchair accessible. Information: (415) 556-9870

Hyde Street Pier
Foot of Hyde Street
Open Daily
November-April:
10 a.m.-5 p.m.
May-October:
10 a.m.-6 p.m.
Ranger-guided tours, self-guided tours, nautical films, and demonstrations available. Wheelchair accessible. Information: (415) 556-6435

The Maritime Store
Hyde Street Pier (see Hyde Street Pier above)
Wheelchair accessible. Information: (415) 775-BOOK

Wapama
Bay Model Visitor Center, Sausalito
Open for scheduled tours and volunteer work parties. Information: (415) 332-8409

Pampanito
Pier 45
Open Daily
May-September:
9 a.m.-9 p.m.
October-April:
Friday-Sunday:
9 a.m.-9 p.m.
Monday-Thursday:
9 a.m.-6 p.m.
Information: (415) 929-0202

Jeremiah O'Brien
Pier 3, Fort Mason
Open Daily
9 a.m.-3 p.m.
Information: (415) 441-3101

We welcome your comments. If you have any questions or suggestions, please write to: Manager San Francisco Maritime National Historical Park, Fort Mason, San Francisco, California, 94123. Or phone (415) 556-3002.

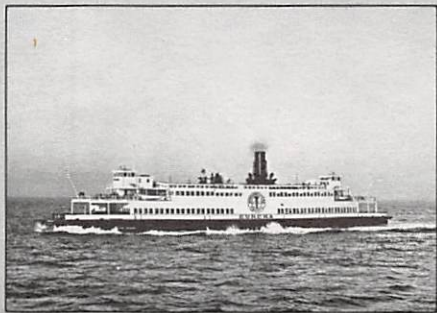




San Francisco Maritime National Historical Park

National Park Service

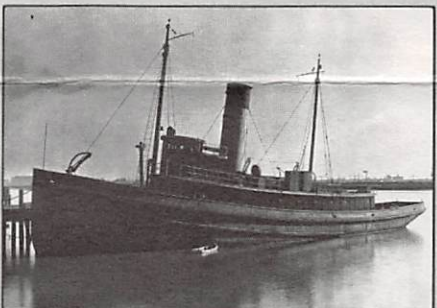
U.S. Department of the Interior



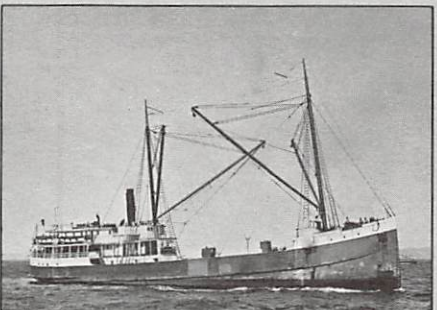
Eureka



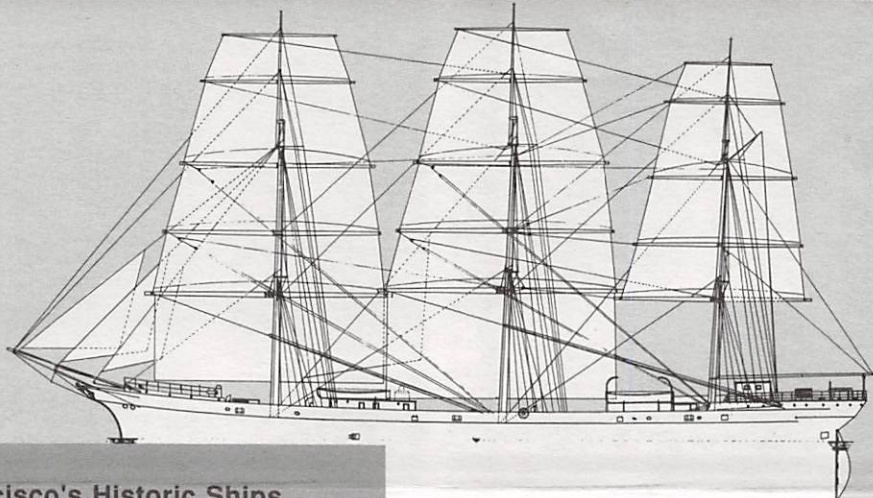
Pampanito



Hercules



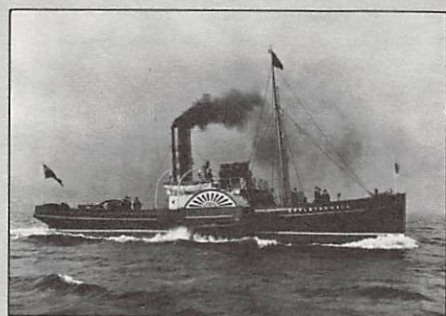
Wapama



Balclutha



Jeremiah O'Brien



Eppleton Hall



Alma

San Francisco's Historic Ships

Balclutha This square-rigged Cape Horn sailing ship was launched in 1886 in Scotland and is typical of hundreds that called yearly in San Francisco carrying coal, wine, and hardware from Europe and returning with California grain.

C.A. Thayer *C.A. Thayer* is one of two surviving vessels from a fleet of 900 that carried lumber from the Pacific Northwest, spurring rapid growth of California cities. Built in 1895, she later sailed to Alaska as a salmon packet and served as a cod fishing vessel in the Bering Sea. When her career ended in 1950, *Thayer* was the last commercial sailing vessel to operate from a West Coast U.S. port.

Eureka The sidewheel ferry *Eureka* was built in 1890 as the railroad ferry, *Ukiah*. From 1922 to 1941, *Eureka* hauled as many as 2,300 passengers and 120 autos at one time across the Bay. Powered by a massive four-story steam engine, *Eureka* — in her day — was the world's largest passenger ferry.

Hercules Built in New Jersey in 1907, *Hercules* made her initial voyage towing her sister ship through the Straits of Magellan. An aptly named vessel, this ocean-going tug — equipped with a triple expansion steam engine — hauled log rafts down the West Coast to lumber mills and towed great sailing vessels out to sea to start their long voyages. *Hercules* is currently undergoing restoration at Pier 1, Fort Mason.

Eppleton Hall *Eppleton Hall*, built in England in 1914, is reminiscent of the paddle tugs that towed ships into San Francisco Bay during Gold Rush times. The tug's side-lever steam engines are descendants of earlier engines used in the sidewheel steamers that connected San Francisco to Panama.

Alma The last San Francisco Bay scow schooner still afloat, *Alma* was launched in 1891 and carried bulk cargoes, including lumber and hay. Sporting a flat bottom and shallow draft, *Alma* navigated the shallow waters of the Bay until highways and bridges phased her out.

Wapama The 1915 steam schooner *Wapama* is undergoing thorough preservation treatment at a temporary berth at the Bay Model Visitor Center in Sausalito. Steam schooners like *Wapama* carried both cargo and passengers, gradually replacing older sailing schooners like *C.A. Thayer*.

Pampanito Restored, maintained, and operated by the National Maritime Museum Association, *Pampanito* is a fleet submarine of the Balao class designed for long-range cruises in the Pacific during the war with Japan. Visitors may board this veteran of the "silent service," tour its cramped living quarters, and view its arsenal of ten torpedo tubes and a five-inch deck gun.

Jeremiah O'Brien *Jeremiah O'Brien* is the last unaltered survivor of 2,751 Liberty Ships built during World War II. Completed in an incredible six to eight weeks, these ships ferried troops and supplies around the globe and served in all theaters of the war. *Jeremiah O'Brien* is preserved, maintained, and operated by the National Liberty Ship Memorial.

