

National Maritime Museum

Golden Gate National Recreation Area

San Francisco



The National Maritime Museum

The National Maritime Museum recounts the saga of the people and ships that helped shape the development of the Pacific Coast. Offering several attractions, the National Maritime Museum includes the museum itself, as well as historic vessels along the San Francisco waterfront. All of these areas are managed by the National Park Service as part of the Golden Gate National Recreation Area.

The exhibits and museum building — located just across from Ghirardelli Square — span more than a century of West Coast seafaring history, from the 1840s to the modern era. Parts of original San Francisco Bay vessels and numerous ship models are displayed on the main floor. Upstairs, exhibits of artifacts and photographs recall the days of the California Gold Rush, Cape Horners, and steam schooners. Here visitors experience firsthand the lives of the men and women who built, supplied, and sailed these ships when waterways were still the major means of transportation. Also on the second floor is the Albert Harmon Gallery, which features thematic displays on a rotating basis.

San Francisco's Historic Ships

A major highlight of the Maritime Museum is the historic ship collection. Five historic merchant ships berthed at Hyde Street Pier and the *Balclutha*, moored at Pier 43, vividly recall the early era of West Coast maritime commerce.

Also docked along the waterfront are two World War II vessels that reflect an era concerned with national defense. The submarine *Pampanito* is operated by the National Maritime Museum Association and is berthed at Pier 45. The National Liberty Ship Memorial operates the Liberty Ship *Jeremiah O'Brien*, which is docked at Pier 3, Fort Mason. Five of San Francisco's historic ships are National Historic Landmarks.

The Maritime Store

Located at the entrance of Hyde Street Pier, The Maritime Store offers a comprehensive selection of books, posters, cards, and gifts of the sea. Books at the store cover many subjects including maritime history and fiction, boat building, sailing, navigation, and marine wildlife. Proceeds from The Maritime Store help support educational programs and conservation projects in all areas of the Golden Gate National Recreation Area including the Maritime Museum.

Museum Collections

The National Maritime Museum maintains three research collections at Fort Mason Center (see map). Located on the third floor of Building E, the *J. Porter Shaw Library* houses over 12,000 volumes as well as extensive holdings of oral history interviews, periodicals, and ephemeral material. The *Historic Documents Department* manages the museum's collections of archives, manuscripts, logbooks, 100,000 sheets of ship plans, and 170,000 historic photographs. These research collections are accessible to the public through the library's reference staff. On the ground floor of Building E, the *Collections Management Department* houses the museum's collection of maritime artifacts and fine arts. Researchers may view a portion of this collection by appointment only.

Aquatic Park

While visiting the National Maritime Museum, take time to enjoy the bayside scenery in Aquatic Park. The Golden Gate Promenade, a 3½ mile scenic walk, begins here and follows the shoreline to Fort Mason and Fort Point National Historic Site underneath the Golden Gate Bridge.

Public transit is the most convenient way to get to the National Maritime Museum, Aquatic Park, and San Francisco's historic ships. Parking is usually scarce due to the number of people visiting the northern waterfront.

For service to the Maritime Museum building, Aquatic Park, and Hyde Street Pier use any of these convenient bus routes:

- 19 — Polk
- 30 — Stockton
- 32 — Embarcadero
- 42 — Downtown Loop
- 47 — Van Ness
- 49 — Mission/Van Ness
- 60 — Powell and Hyde cable car

To reach *Balclutha* and *Pampanito*:

- 15 — Third Street
- 19 — Polk
- 32 — Embarcadero
- 39 — Coit Tower
- 42 — Downtown Loop
- 59 — Powell and Mason cable car

To reach *Jeremiah O'Brien* and *J. Porter Shaw Library* (Fort Mason):

- Laguna Street Entrance: 28 — 19th Avenue
- Franklin Street Entrance: 19 — Polk
- 30 — Stockton
- 42 — Downtown Loop
- 47 — Van Ness/Potrero
- 49 — Van Ness/Mission

Information: 673-MUNI

Maritime Museum

Foot of Polk Street

Open Daily:

May–October:

10 a.m.–6 p.m.

November–April:

10 a.m.–5 p.m.

January–June:

Closed Monday

Tours: Daily

Wheelchair accessible

No admission fee

Information:

(415) 556-2904

J. Porter Shaw Library

Building E, Fort Mason

Library Hours:

Thursday and Friday:

1 p.m.–5 p.m.

Saturday:

10 a.m.–5 p.m.

Information:

(415) 556-9870

Hyde Street Pier

2905 Hyde Street

(Foot of Hyde Street)

Open Daily:

November–April:

10 a.m.–5 p.m.

May–October:

10 a.m.–6 p.m.

Ranger-guided tours, self-

guided tours, nautical

films, and demonstrations

are available.

Wheelchair accessible

No admission fee

Information:

(415) 556-6435

The Maritime Store

Hyde Street Pier

Open Daily

Information:

(415) 556-6435

Balclutha

Pier 43

Open Daily

Admission fee

Information:

(415) 982-1886

Pampanito

Pier 45

Open Daily

Admission fee

Information:

(415) 673-0700

Jeremiah O'Brien

Pier 3,

Fort Mason Center

Open Daily:

9 a.m.–3 p.m.

Admission fee

Information:

(415) 441-3101

We welcome your comments.

If you have any questions or suggestions concerning your visit, please contact the park's Superintendent at Golden Gate National Recreation Area, Fort Mason, San Francisco, CA 94123; or call (415) 556-0560.



National Maritime Museum

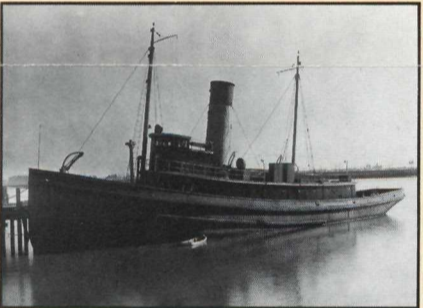
San Francisco



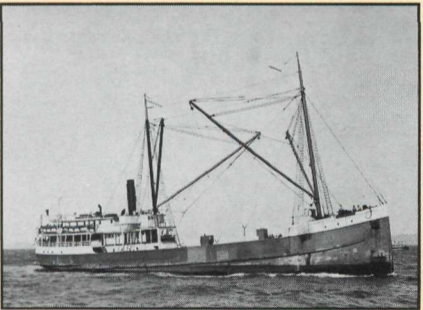
Eureka



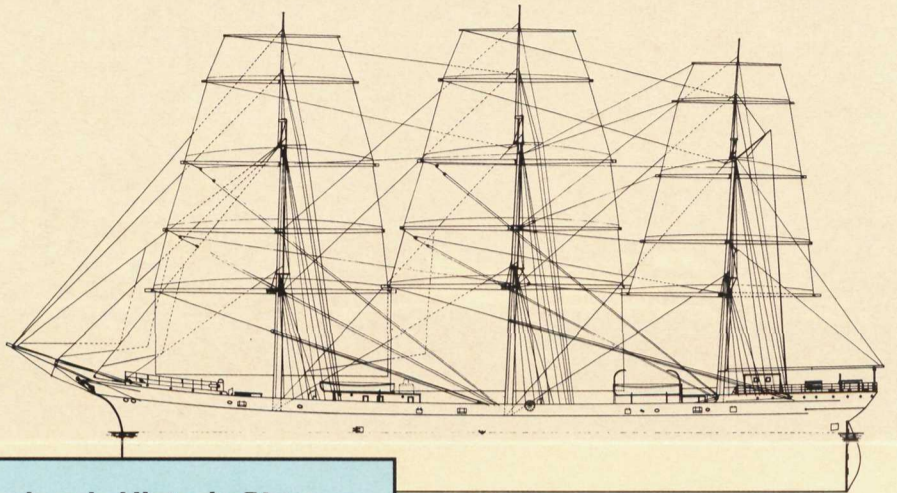
Pampanito



Hercules



Wapama



Balclutha

San Francisco's Historic Ships

Balclutha Just five blocks from the museum building, the British-built *Balclutha* is berthed at Pier 43. This square-rigged Cape Horn sailing ship was launched in 1886 and is typical of hundreds that called yearly in San Francisco, carrying coal, wine, and wool from Europe to trade for California grain.

C.A. Thayer The *C.A. Thayer* is one of two surviving vessels from a fleet of 900 that carried lumber from the Pacific Northwest, spurring rapid growth of California cities. Built in 1895, she later sailed to Alaska as a salmon packet and served as a cod fishing vessel in the Bering Sea. When her career ended in 1950, the *Thayer* was the last commercial sailing vessel to operate from a West Coast U.S. port.

Eureka The sidewheel ferry *Eureka* was originally built in 1890 as *Ukiah*. From 1922 to 1941, she hauled as many as 2,300 passengers and 120 autos at one time across the Bay. Powered by a massive four-story steam engine, the *Eureka* — in her day — was the world's largest passenger ferry.

Hercules Built in New Jersey in 1907, *Hercules* is one of a few tugs to make the hazardous journey through the Straits of Magellan. An aptly named vessel, this ocean-going tug — equipped with a triple expansion steam engine — hauled log rafts down the West Coast to lumber mills and towed great sailing vessels out to sea to start their long voyages.

Eppleton Hall The *Eppleton Hall*, built in England in 1914, recalls the paddletugs used to tow clipper ships into San Francisco Bay during Gold Rush times. "Eppie's" side-lever steam engines are descendants of earlier engines used in the sidewheel steamer fleet connecting San Francisco to Panama.

Alma One of the last San Francisco Bay scow schooners still afloat, the *Alma* was launched in 1891 and carried bulk cargoes including lumber and hay. Sporting a flat bottom and shallow draft, *Alma* navigated the shallow waters of the Bay until highways and more efficient transportation routes phased her out.

Wapama The 1915 steam schooner *Wapama* is temporarily in drydock in Oakland undergoing thorough preservation treatment. Steam-engined schooners like *Wapama* carried both cargo and passengers, gradually replacing older sailing schooners like the *C.A. Thayer*.

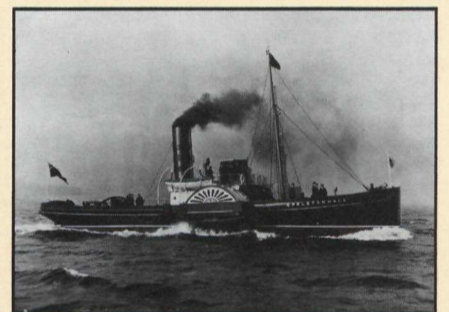
Pampanito Restored, maintained, and operated by the National Maritime Museum Association, the *Pampanito* is a fleet submarine of the Balao class designed for long-range cruises in the Pacific during the war with Japan. Visitors may board this veteran of the "silent service," tour the cramped living quarters, and view the arsenal of ten torpedoes and a five-inch deck gun.

Jeremiah O'Brien The *Jeremiah O'Brien* is the last unaltered survivor of 2,751 Liberty ships built during World War II. Completed in an incredible six to eight weeks, these ships ferried troops and supplies around the globe and served in all theaters of the war.

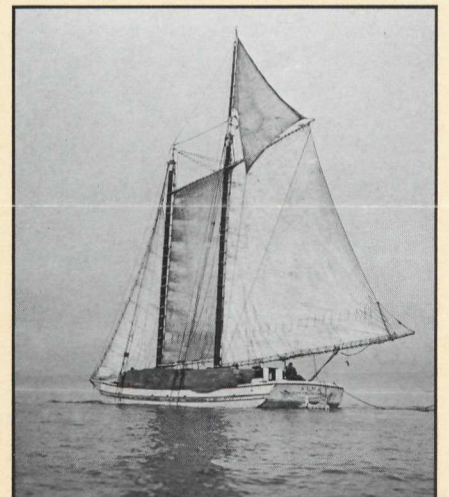
The *Jeremiah O'Brien* is preserved, maintained, and operated by the National Liberty Ship Memorial.



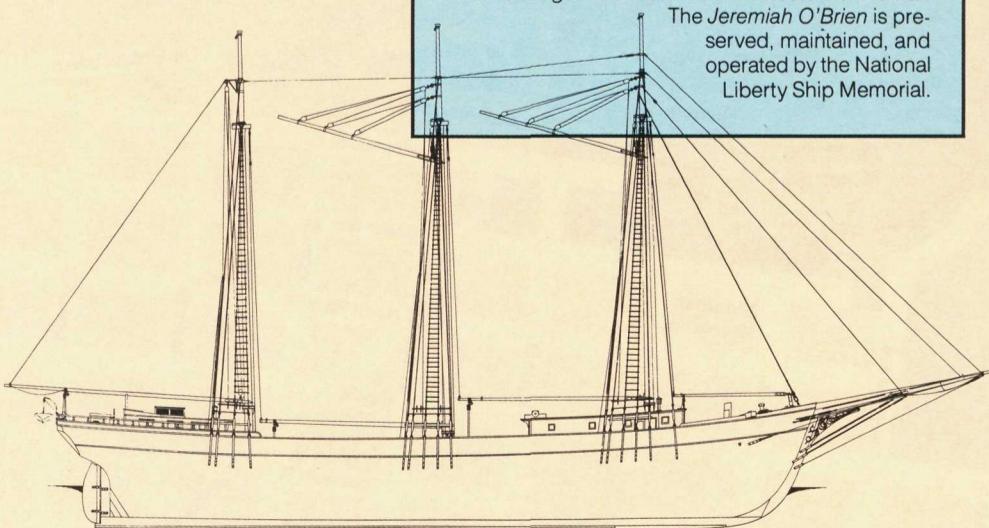
Jeremiah O'Brien



Eppleton Hall



Alma



C.A. Thayer