



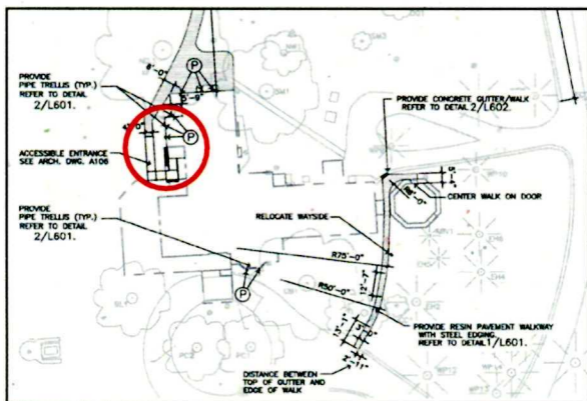
Several new programs include talks on the park as a working farm, illustrated programs, self-guided cellular phone tours, and an 18 minute narrated video tour of the Roosevelt home which takes visitors room by room through the house.

The rehabilitation includes work to interior elements such as woodwork, flooring, and lighting, as well as to mechanical systems including electrical, heating and ventilation, fire suppression and security. Exterior work includes installation of a new roof, gutter and drainage system, waterproofing of the foundation, and rehabilitation of historic windows, doors, siding, and porches to historic preservation standards.

The home's original rear porch and its sky lit central light well, both of which were altered or removed in past work on the home, will be restored. In addition, an accessible ramp along with a walkway from the visitor center will be installed.

Other aspects of this project include rehabilitation of the adjacent ice house, upgrade of the park's fire hydrants, electrical service, and the installation of stand-by generators and upgrades to the park's outdoor security lighting.

For up to date information on the project visit [www.nps.gov/sahi](http://www.nps.gov/sahi), or for information on the rehabilitation project visit: <http://parkplanning.nps.gov>.



Location of new accessibility ramp when renovations are complete.

Sagamore Hill  
National Historic Site  
20 Sagamore Hill RD  
Oyster Bay, NY 11771  
(516) 922-4788

Email:  
[SAHI\\_Information@nps.gov](mailto:SAHI_Information@nps.gov)

Website:  
[www.nps.gov/sahi](http://www.nps.gov/sahi)