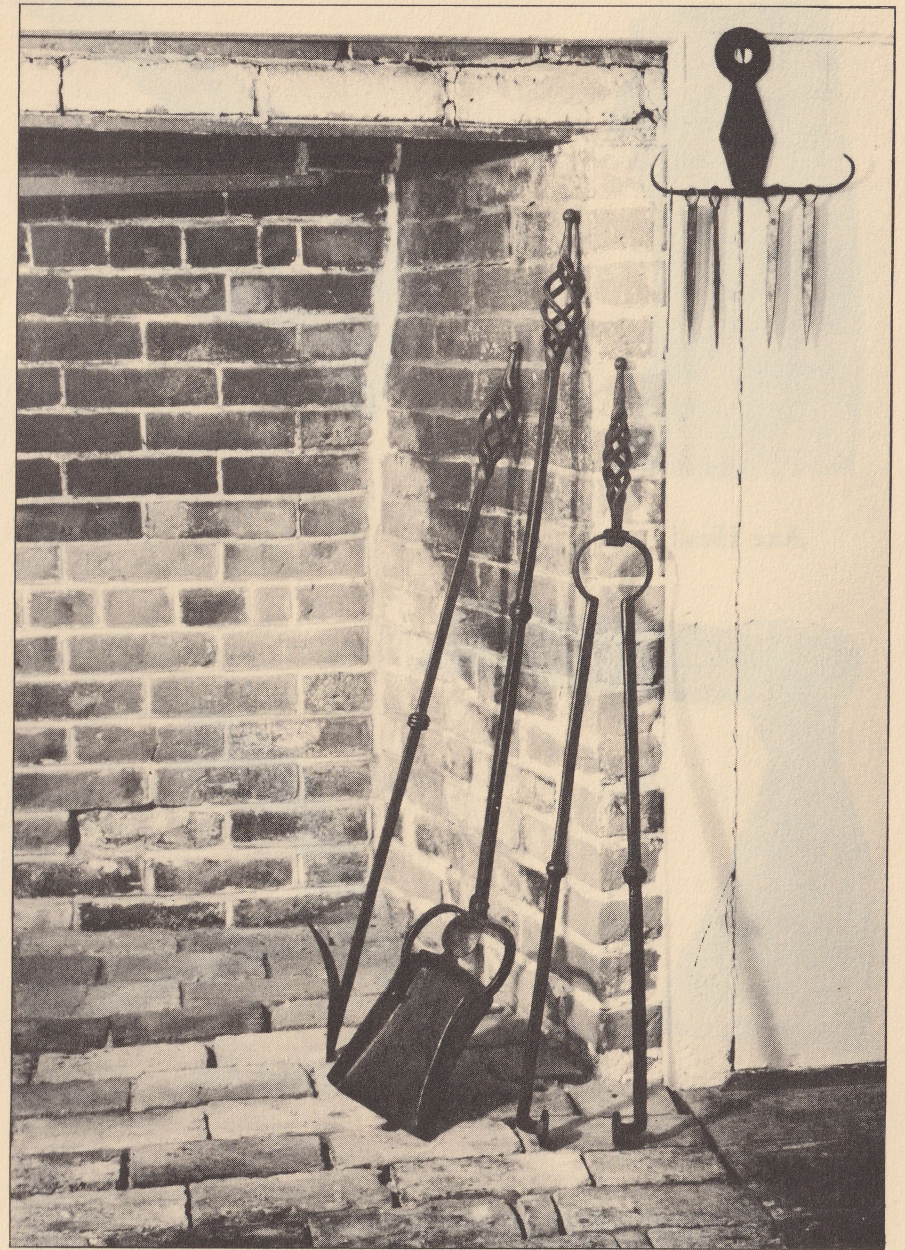




Forgings

Saugus Iron Works National Historic Site

SAUGUS, MASSACHUSETTS 01906



Fireplace Set

Ox Horn Skewer Set

I CARPENERS TOOLS:

Each set or individual pieces will be made to order. No items are kept in stock. Widths and lengths of all tools will be determined by customer preference and inquiry.

Each tool is hand-forged and fire-welded of mild steel and high carbon steel and individually annealed, hardened and tempered. Handles not included. Wrought Iron can be used in place of mild steel if desired by the customer.

II BUILDING HARDWARE

These are our current offerings in building hardware. However, customers designs can be made and will be quoted on if presented in the form of an accurately scaled drawing. The material used is mild steel. Wrought iron can be used if requested, and if available in the right size for the job.

The traditional finish is linseed oil and wax. Burned on, it gives a nice matte black color and will last two years outside. Interior hardware can be left, cleaned only for painting, if so desired.

Nails are roseheaded unless otherwise specified and are included as part of each job.

III FIREPLACE TOOLS

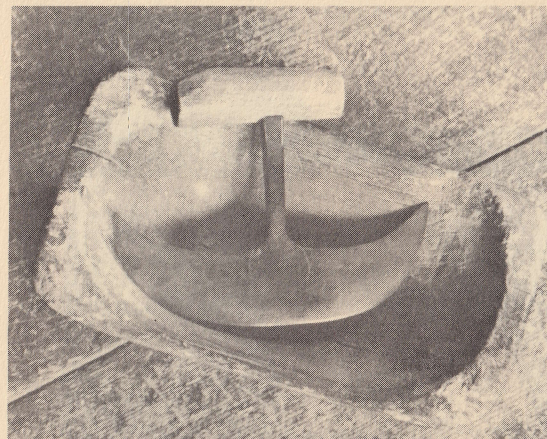
The tools are not the only ones we make and are examples of one type that we can make. The lengths of each can be varied to suit the customer. Designs of customers will be considered and will be quoted on if their manufacture is possible. Finishes are linseed oil and wax, or cleaned only, as desired by customer.

IV. KITCHEN WARE

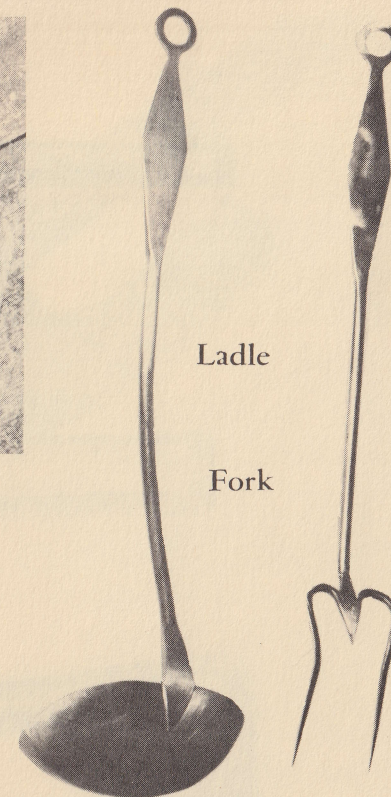
Ladle, Fork and Spatula

These tools are made in the same manner as were the original. Each is hand-forged and welded by our Blacksmith. Each will be made of iron/steel which means they are subject to rust.

Prior to use, each tool should be sterilized in boiling water, dried, and while still warm, given a light coating of vegetable oil. If used regularly, they will give many lifetimes of service. To remove rust use Ajax and a scrub pad.

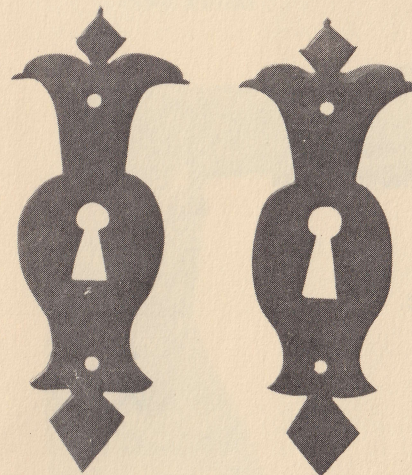


Food Chopper

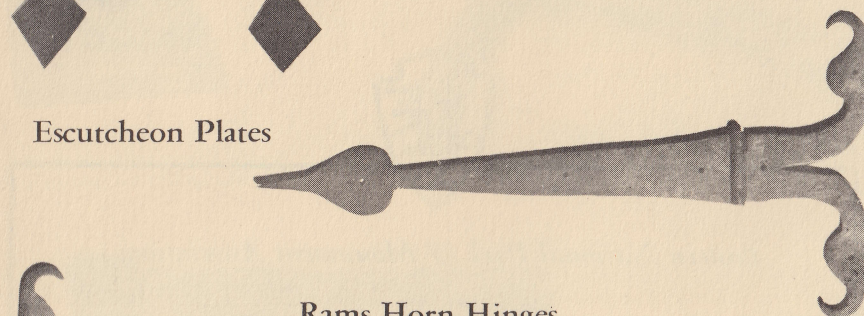


Ladle

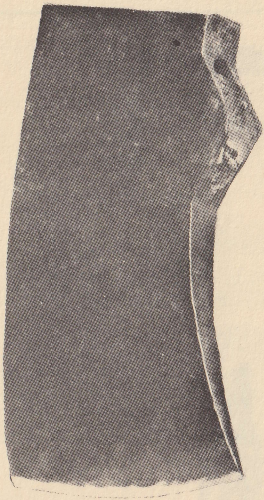
Fork



Escutcheon Plates



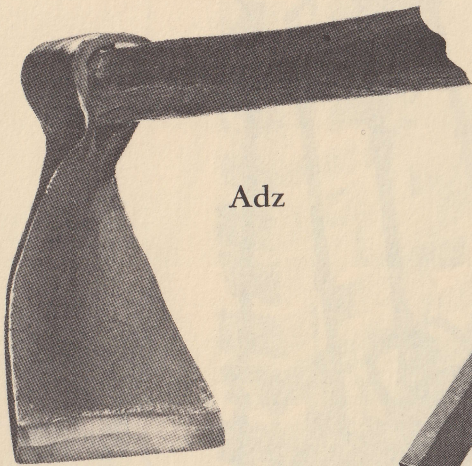
Rams Horn Hinges



Axe Head



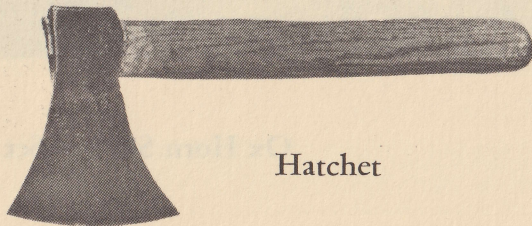
Broadaxe



Adz



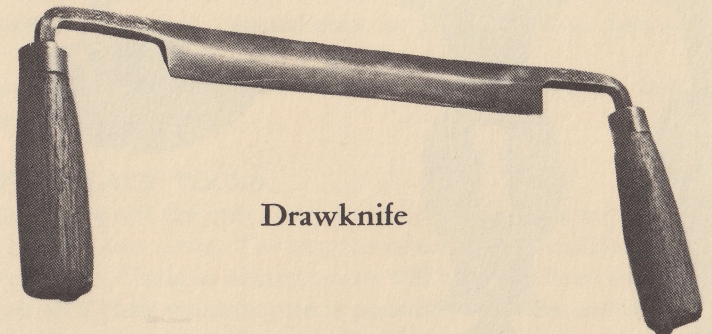
Hand Adz



Hatchet



Wood Chisels



Drawknife



Eastern National Park & Monument Association

in cooperation with

UNITED STATES DEPARTMENT OF THE INTERIOR

NATIONAL PARK SERVICE