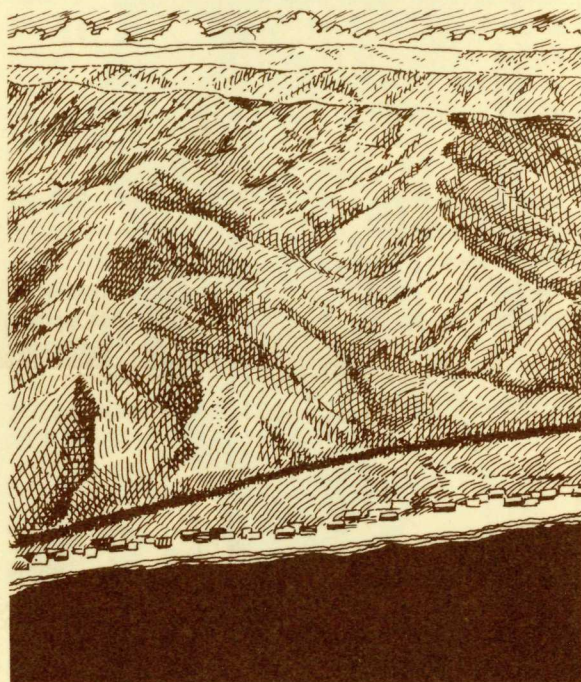

Santa Monica Mountains National Recreation Area

Introducing the Park
National Park Service
US Department of the Interior



Santa Monica Mountains
National Recreation Area
23018 Ventura Boulevard
Woodland Hills, CA 91364

Postage and Fees Paid
U.S. Department of the Interior
INT-417



A Message from the Superintendent

Santa Monica Mountains National
Recreation Area
23108 Ventura Boulevard
Woodland Hills, California 91364

Dear Friend of the Santa Monicas:

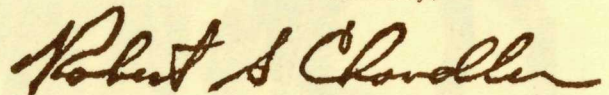
The Santa Monica Mountains National Recreation Area was established when President Carter signed the National Park and Recreation Act in November 1978. The legislation recognized that the Santa Monica Mountains are of considerable value and the Federal Government should play a role in their preservation. The National Park Service is responsible for planning, developing and managing this new park.

To do this complex and challenging job, we request the assistance of residents of this region as well as state, county and local governments. We'll be pioneering new ground in the history of urban development. Please join with us in this exciting opportunity to improve the quality of life for residents and visitors alike for now and in the years to come.

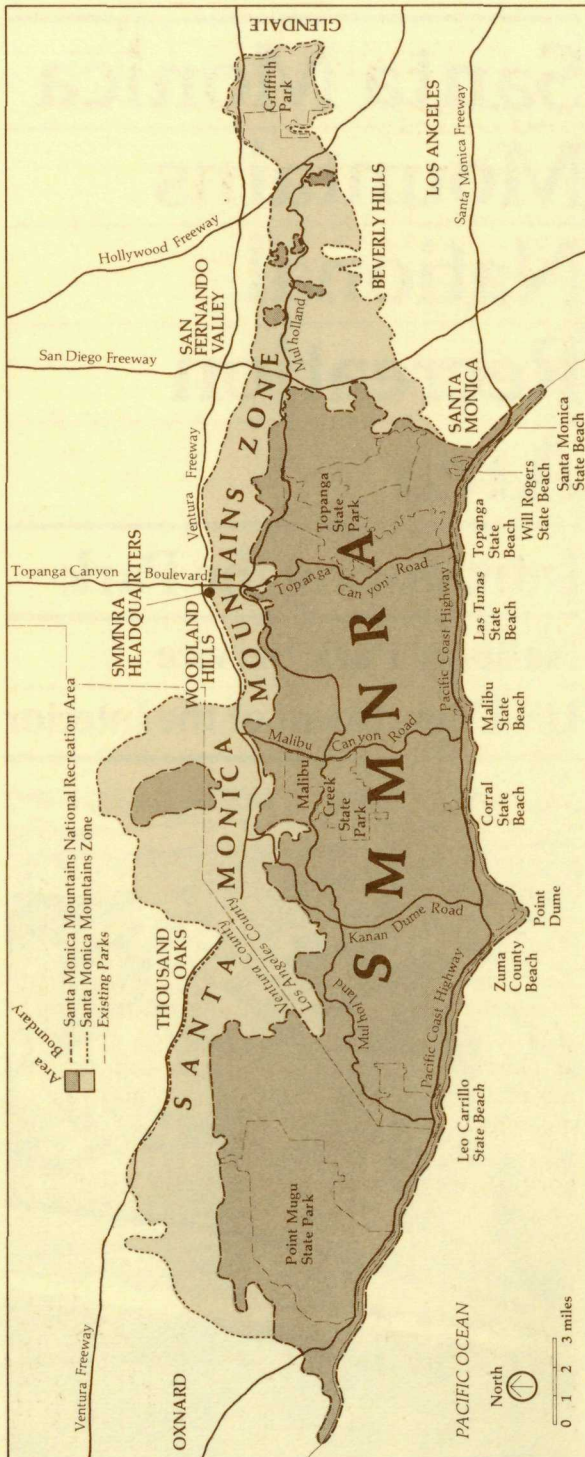
We hope this booklet will answer your questions about the newly-established national recreation area. We will do our best to keep you informed as planning proceeds. You will have an opportunity to participate in workshops and public meetings.

For further information, call us at (213) 888-3770 or write to us at the above address.

Sincerely,



Robert S. Chandler
Superintendent



A New Partnership

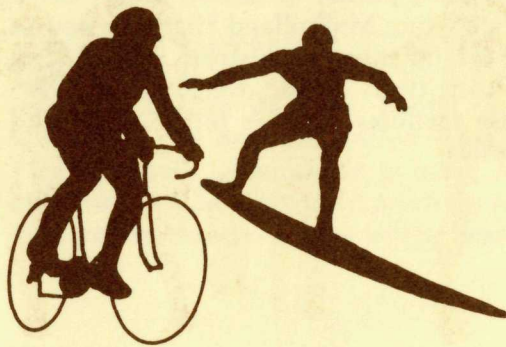
Less than one hour from downtown Los Angeles is a quiet retreat: the Santa Monica Mountains. The Mountains contain a variety of attractive features. Steep cliffs and rolling hills rise up along 45 miles of ocean shoreline. Beaches, valleys, lagoons, streams, and rugged scrubland create a shoreline and mountain range that covers about 240,000 acres. Often, Pacific breezes flow over the mountains, bringing a breath of fresh air to the area's residents.

The scenic beauty of the mountains and the seashore have attracted people from around the world. Summer brings millions of visitors to the beaches; for many, the mountains have provided an attractive residential environment. Over the years, communities have rapidly grown closer to the Santa Monica range and the results of these human pressures are obvious. Homes and roadways push up canyons, cling to the shoreline, and cover valley floors. The attraction to the area threatens to damage its best qualities — making it too much of what we are used to and not enough of what it once was.

For the past decade, many public agencies and interest groups have been working to understand the mountains and the seashore on their own terms. Fierce fires and landslides give testimony that some places must remain quiet and relatively unchanged. State and local agencies have devoted considerable attention to the factors affecting the area's future. Some parks have been created and various controls have been initiated to locate development in the most suitable places. As a result, the beauty and relaxation that the mountains and shoreline offer are still with us.

The National Park Service is now a partner in the effort to preserve and protect the Santa Monica Mountains. The National Park Service staff is here to work with you to keep the many benefits of the mountains available and to create a park that we all can enjoy. We want to retain the diversity of the area — offering quiet, open spaces; protecting scenic values; and providing places to meet and play.

We need your help to create this park. We need to know your expectations for today and for the years to come. We look forward to having your assistance in public workshops and meetings as we prepare a long-range development and management plan for this new urban park.



Is Santa Monica Mountains NRA Going to Be Like Yosemite National Park or Lake Mead National Recreation Area?

Not exactly. Actually, the Santa Monica Mountains NRA is a unique situation for the National Park Service. We will be exploring many new approaches to land management, land preservation, and inter-agency cooperation. Other state and local agencies, as well as private citizens, will play critical roles in helping to plan the park's future.

As yet no lands have been acquired for the National Recreation Area and the rate of acquisition will depend upon how much money Congress provides the NPS to spend each year. The legislation mandates the National Park Service to purchase only areas needed for the following critical purposes: to preserve the beaches, coastal uplands and stream drainage basins; to connect existing parks; to protect scenic corridors including Mulholland Highway and to develop and interpret historic sites, hiking and riding trails, scenic overlooks and visitor use facilities such as picnic areas and campsites.

The recreation area will be put together gradually. Working with other state and local agencies and their park departments, we will explore management alternatives and assist other jurisdictions in improving regional recreation opportunities.

Putting the Park on the Map

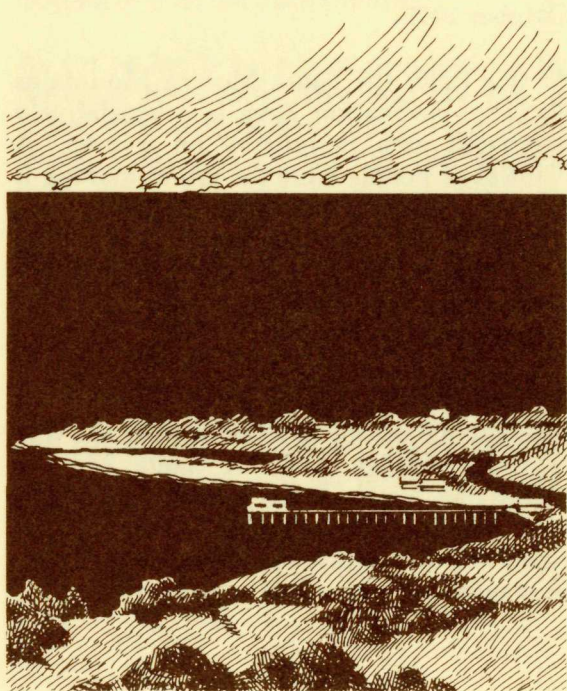
An important task ahead is to define the boundary of Santa Monica Mountains National Recreation Area. When we have identified lands for acquisition, the presently proposed boundary will be revised. This revised boundary must be submitted to the Congress by January 1, 1980. The National Park Service has been authorized \$125 million for land acquisition. The first acquisition funds are expected to be available in October 1979.

At this time, the Santa Monica Mountains National Recreation Area is a legislatively mandated area designated on a map. A handful of people have the job of making it a reality. At first, the National Park Service will focus on these projects: determining and proposing lands that should be acquired for the park; acquiring lands; and developing a management plan.

The National Park Service will depend upon your advice as we develop a plan for this new and unique park. A Santa Monica Mountains National Recreation Area Citizens' Advisory Commission is being established and will hold frequent meetings where your opinions and concerns will be heard.

We Need Your Help

The National Park Service wants your assistance in creating the Santa Monica Mountains National Recreation Area. We will depend upon your advice as we develop the plan for this new and unique park. For now, your involvement can begin very simply: fill in the attached form, cut it out, and drop it in the mail. You'll then be on our mailing list, and we'll keep you posted of our activities.



Please send me information about National Park Service land acquisition procedures.

Please put me on your mailing list.

Please print:

Name

Street / P.O. Box

City

State

Zip

Santa Monica Mountains
National Recreation Area
23018 Ventura Boulevard
Woodland Hills, CA 91364

Postage and Fees Paid
U.S. Department of the Interior
INT-417

Santa Monica Mountains
National Recreation Area
23018 Ventura Boulevard
Woodland Hills, CA 91364

