



## Summary of Scoping Comments

Newsletter #2 • Summer 2011



*Dear Friends,*

Last fall, many of you invested your time to learn about the Rim of the Valley Corridor Special Resource Study through attending public meetings or reading about the study process in Newsletter #1 or on the study website. Many of you also filled out the newsletter comment forms and sent us letters or electronic comments. Over the past several months, the National Park Service (NPS) study team has been reviewing and analyzing your ideas, suggestions and questions. We thank you for taking the time to comment. We've learned a lot about the issues that concern you, the special places that you value, and what you hope this study process will accomplish.

This newsletter includes a summary of comments on the topics mentioned most frequently during the initial public comment period for this study. Since there were more than 2,000 comment letters and e-mails, we are presenting an overview of the range of concerns and highlights from the comments that we received.

Public comments focused primarily on the following broad topics:

- Suggestions for the scope and definition of the study area.
- Suggestions for the study process.
- Natural and cultural resources that the NPS should consider for possible significance
- Existing recreational uses and future recreational needs.
- Issues and opportunities to be considered in the study process.

All of the input we have received is being carefully considered. We are always interested in your questions, ideas, and concerns regarding the study. Please let us know if there are additional issues about which we should be aware.

*— the Study Team*



### Newsletter Contents

This newsletter provides an overview of the special resource study, including:

- Summary of Public Scoping Comments - What We Heard From You
- Frequently Asked Questions
- Next Steps in Study Process

Photo: A group of hikers in Griffith Park. NPS Photo.

---

# Summary of Public Scoping Comments - What We Heard From You

---

During the public scoping period (June 4, 2010 – October 29, 2010), the NPS received 2,108 comment letters and e-mails from individuals, agencies, cities, organizations and elected officials. Input on the scope of the study was also provided by the approximately 400 people who attended our nine public meetings in Altadena, Calabasas, Chatsworth, Los Angeles, Santa Clarita, Sylmar, Thousand Oaks, and Tujunga. Additional input was gathered through meetings with various individuals, agencies, organizations, cities and elected officials.

The following is a summary of the comments that we received.

## Study Area

The NPS received comments from community members and organizations regarding the scope of the study area. Some respondents had questions about the study area presented in Newsletter #1 and about the legislative intent of the study. The authorizing legislation for the study asks the NPS to study “the area known as the Rim of the Valley Corridor, generally including the mountains encircling the San Fernando, La Crescenta, Santa Clarita, Simi and Conejo Valleys in California.”

Some commenters requested that additional places be added to the study area boundary. Others requested that the NPS exclude specific areas from the study area including certain private lands, urban parks in Los Angeles, and the Santa Susana Field Laboratory site. Some supported the inclusion of urban parks and the Santa Susana Field Laboratory in the study.

Some respondents requested clarification on the study area of the San Gabriel Watershed and Mountains Special Resource Study (San Gabriel Study) which overlaps the Rim of the Valley Corridor Special Resource Study (Rim of the Valley Study) area.

Some of the comments requested that the study area be expanded to include the following:

- Access to the Santa Clara River
- Pacific Crest Trail route crossing SR-14 and Vazquez Rocks
- The “north rim” of Santa Clarita Valley
- Wildlife corridor between the Santa Susana Mountains and the Los Padres National Forest
- Los Angeles River through San Fernando Valley
- Bouquet, Chiquito and Hasley Canyons, and Val Verde (north of Santa Clarita)
- Sepulveda Basin (in the southern San Fernando Valley along the Los Angeles River)

*“Sometime in the future we may wish to secure a corridor to the Los Padres National Forest. Now is a good time to study the feasibility of such a connection.”*

## Study Process

Comments about the study process emphasized the importance of public involvement, and provided suggestions for analysis that should be completed as part of the study process.

## Public Involvement

Comments expressed the importance of coordination with regional, local and grassroots conservation and recreation planning efforts and consultation with Native Americans, historical groups, neighborhood councils, equestrians, mountain bikers and other recreational users. Some comments urged the NPS to engage the public again when a more specific study area is determined. Comments expressed the importance of coordination with local and county planning processes such as Los Angeles County’s update of Significant Ecological Areas and local trail plans.

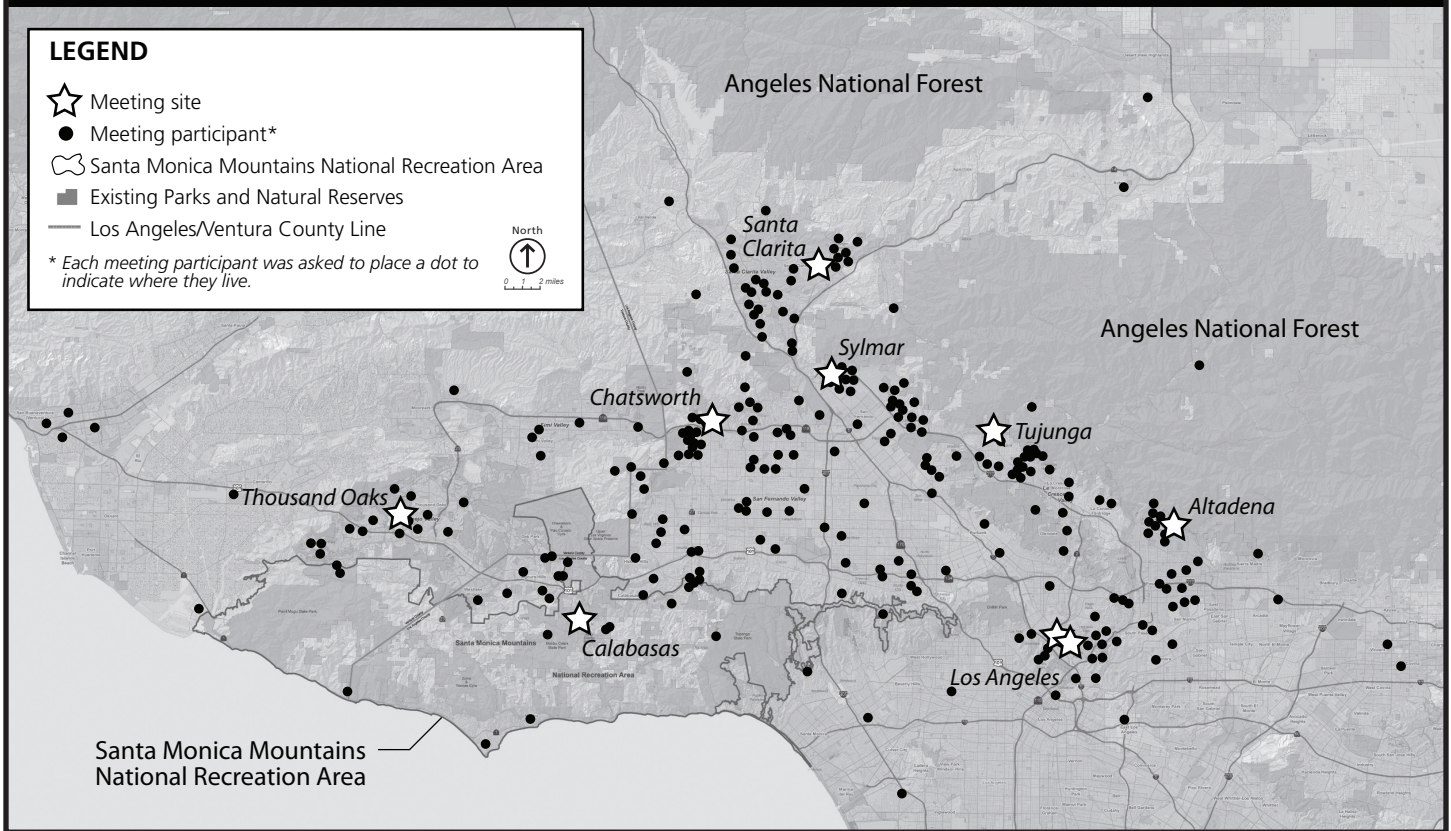
## Study Schedule

Some commenters expressed an urgency to complete this study as soon as possible because during the years it will take to complete the study and legislate and implement the recommendations, more open space will become developed.



Equestrians crossing a stream near Hanson Dam. NPS Photo.

## Public Scoping Meeting Participants' Locations



More than 400 participants from throughout the study area and beyond participated in one of the nine public scoping meetings.

### San Gabriel Watershed and Mountains Special Resource Study

Some people had concerns about how the overlapping area with the San Gabriel Study would be addressed in the Rim of the Valley Study. Some commenters wanted the overlap area to be eliminated from Rim of the Valley study area, while others expressed concern that if the overlap area was eliminated from Rim of the Valley study area, the southwestern foothills of the San Gabriel Mountains, such as Altadena, might be left out of recommendations for both studies.

#### Analysis

Respondents called for specific analysis to be considered as part of the study process. Specific suggestions include:

- conduct a cost/benefit analysis of the study recommendations.
- identify the advantages of local and state land management versus federal land management or coordination.
- conduct a "Transit to Trails" feasibility study.
- evaluate opportunities to complete the Rim of the Valley Trail.
- include a definitive map of regional wildlife corridors.



Picnic Area in Big Tujunga Canyon, Angeles National Forest. NPS Photo.

---

# Summary of Public Scoping Comments - What We Heard From You

---

## Cultural Resources

Many commenters emphasized the importance of protecting and interpreting the study area's history, particularly with regard to historic routes, the motion picture industry, and mineral and oil exploration. Commenters also supported the protection of archeological sites and areas sacred to Native Americans. Some comments requested that recreation trails avoid these sites, to further their protection.

Comments referenced many specific cultural sites or subjects that should be considered in the study including sites in the following general areas:

- **San Gabriel Mountains**
  - Mount Lowe and Echo Mountain Railway
  - Mount Wilson Trail
  - Chantry Flats
  - Dawn Gold Mine
  - Owen Brown's grave site
  - Big Tujunga Canyon and Lancaster Lake (filming locations)
  - Little Tujunga Canyon
  - Sturtevant Camp
  - Placerita Canyon (including Oak of the Golden Dream)
- **San Gabriel Valley area**
  - Cobb Estate
  - Jet Propulsion Lab
- **Verdugo Mountains**
  - Verdugo Hills Pioneer Cemetery
  - Verdugo Rocks
  - La Tuna Camp
  - Shadow Hills
  - Shrine of Mother Francis Xavier Cabrini
- **La Crescenta Valley area**
  - Sunland/ Tujunga village site
  - Pop's Willow Lake
  - Lake View Terrace
- **San Fernando Valley**
  - Beale's Cut
  - Butterfield Stage Route
  - Rancho Sombbrero (Stetson Ranch Riding arena)
  - San Fernando Mission and related sites
  - San Fernando Valley Veteran's Hospital (earthquake site)
- **Santa Susana Mountains**
  - Mentryville (Pico Canyon)
  - Newhall Ranch
  - Towsley and Wiley Canyons
  - Bee Canyon
  - East Canyon
  - Rice Canyon
  - Orcutt Ranch
- **Santa Clarita Valley area**
  - Steven T. Mather Borax Mine (Mint Canyon)
  - Ridge Route
  - Rancho Camulos (Ramona's House on Santa Clara River)
- **Simi Hills/Santa Susana Pass**
  - Canoga Cave
  - Corriganville (former filming location)
  - Dayton Canyon
  - Devil's Slide (Santa Susana Pass State Historical Park)
  - Iverson Ranch (filming location)
  - Santa Susana Field Laboratory
  - The "Twelve Apostles" (rock formation)
  - Runkle Canyon
- **Conejo Valley**
  - Adohr Farms Dairy (near Camarillo)
  - Conejo Mountain
- **Santa Monica Mountains**
  - Griffith Park
  - Griffith Observatory
- **Downtown and Northeast Los Angeles areas**
  - Portola crossing site
  - California State Parks (Los Angeles State Historic Park, Rio de Los Angeles, and Bowtie parcel)
  - Arroyo Seco area including the Scenic Byway
  - Heritage Square
- **Broad themes or linear historic trails or features**
  - Native American villages and sacred sites
  - Juan Bautista de Anza National Historic Trail
  - Los Angeles City Historic and Cultural Monuments
  - Spanish rancheros
  - Old Spanish Trail/Mormon Trail
  - Sites associated with William Mulholland (California Aqueduct)
  - Nike Missile sites (Cold War theme)

# Summary of Public Scoping Comments - What We Heard From You

## Natural Resources

Many of the comments referenced specific natural resources or areas that should be considered in the study process. The majority of comments about natural resources placed a high value on the preservation of wildlife corridors.

### Natural Resource Areas

Specific natural resource areas which respondents suggested should be considered in the study include:

- **San Gabriel Mountains**
  - Angeles National Forest
  - Big Tujunga River Wash (from Hanson Dam to Tujunga Dam) (Riversidean Alluvial Fan Sage Scrub)
  - Placerita Canyon State Park
- **Verdugo Mountains**
  - State Park Lands
  - Theodore Paine Foundation
  - La Tuna Canyon
- **La Crescenta Valley area**
  - Foothill canyons which provide a buffer between the Angeles National Forest and the urban areas from La Crescenta to Altadena are important for access, drainage, and wildlife.
  - Sunland, Tujunga
- **San Fernando Valley area**
  - Bull Creek (tributary of Los Angeles River)
  - Chatsworth Reservoir
  - Lopez Canyon Landfill
  - O'Melveny Park (Los Angeles City Park)
  - Sepulveda Basin (wetland area, migratory stop for birds)
  - Mission Trail along the Los Angeles River
- **Santa Susana Mountains**
  - Newhall Ranch (approved EIR has identified open space)
  - Santa Clarita Woodlands, including East and Bee Canyons (contains unique mix of conifers, oaks, ash, and walnuts)
  - Sunshine Canyon Landfill (mitigation areas)
  - Towsley Canyon (perennial stream, watershed, oil seeps)
- **Santa Clarita Valley area**
  - Tick Canyon (California gnatcatcher habitat)
  - Vazquez Rocks/Agua Dulce (Pacific Crest Trail route is wildlife crossing)
- **Conejo Valley area**
  - Calleguas and Conejo Creeks
  - Conejo Mountains and the Conejo Canyons area at the top of the Camarillo Grade
- **Simi Hills area**
  - Santa Susana Field Laboratory (open space, habitat, clean-up issues)
  - Santa Susana State Historical Park (open space and habitat)
  - Simi Hills
  - Eagle's Nest (wildlife corridor)
- **Downtown and Northeast Los Angeles areas**
  - Los Angeles River (including state parks along the river)
  - Mission Trail from downtown LA to Chatsworth
  - Ernest E. Debs Park and nearby walnut woodlands
- **Los Angeles County's Significant Ecological Areas**
  - including Altadena, Griffith Park, Santa Monica Mountains, Santa Susana Mountains/Simi Hills, Tujunga Valley/Hanson Dam, and Verdugo Mountains



Public meeting presentation at Chatsworth, CA. NPS photo.

---

# Summary of Public Scoping Comments - What We Heard From You

---

## Wildlife Corridors

A majority of the scoping comments expressed a desire to see conservation of wildlife corridors as a main emphasis of the study. The study is seen as a significant opportunity to enhance ecological connectivity to the Santa Monica Mountains. Many respondents stated that the survival and genetic diversity of some species in the Santa Monica Mountains is dependent upon the conservation of natural habitat within these wildlife corridors.

Respondents provided a number of specific suggestions for the protection of wildlife corridors. Some of the comments suggested locations that could be improved for wildlife crossing including underpasses for Highway 101, Interstate 5 and CA-14 (south of Santa Clarita) and identification of a safe passage between the Angeles National Forest and Elysian Park. Many comments called for wildlife corridor connections between the Santa Monica Mountains, the Simi Hills, the Santa Susana Mountains and the Los Padres National Forest across the Santa Clara River to improve the survival of mountain lions and other species throughout the region. Some commenters recommended using existing studies of wildlife corridors and local environmental studies and plans as much as possible while others felt that some of the existing wildlife corridor studies were inadequate or not conclusive enough for decision making. Some wanted to see a prioritization of wildlife corridors and habitat in the study area. Some commenters supported identifying opportunities for ecological restoration and including them in the study, such as the Santa Susana Field Laboratory site which functions as an important wildlife corridor.

## Rare or Endangered Wildlife

Commenters stated that the study area may include important habitat for rare or endangered species including, Least Bell's vireo, California coastal gnatcatcher, California condors, and southern steelhead trout. Unusual species such as burrowing owls, ring-tailed cats, and jack rabbits were also mentioned in comments as having been present in the study area.

## Resource Threats

Some commenters expressed concern about the impact and spread of invasive species, loss of habitat connectivity, and effects of climate change on the continued survival of native species. Some are specifically concerned about increases in invasive species resulting from severe wildfires. Some requested that the study identify opportunities for restoration of native habitats and carbon sequestration sites. A majority of the comments felt that the major concern of this study should be to identify connections between natural areas of open space to improve the chances of survival for all species.

*“I urge the National Park Service to fully study wildlife corridors that provide connectivity for large carnivores like mountain lions and bobcats.”*



Mule deer at Paramount Ranch. Photo by Brendon O'Neal.



Mariposa butterfly lily. NPS Photo.

---

# Summary of Public Scoping Comments - What We Heard From You

---

## Recreational Uses

Many commenters provided suggestions about recreational use and opportunities, including suggestions for connecting existing open space and recreation areas. Others suggested that the study address the region's growing demand for recreation and the lack of open space in urban areas.

### Trails and Trail Use

Many commenters supported the idea of multi-use (hiking, biking and equestrian), interconnected trails that would be part of a continuous trail system throughout the study area. Some commenters requested that bike trails be separated from equestrian trails due to conflicts. Some expressed a desire for an overall increase in the number of trails as well as better access, including neighborhood trailheads. In areas where mountain biking is currently allowed, many felt strongly that it should continue to be allowed regardless of what agency manages the land. Other commenters felt that trails and facilities considered by the study should encourage dispersal of users and decrease trail user conflicts.

Some comments expressed support for Marge Feinberg's 1976 vision of designing and completing the Rim of the Valley trail.

*"I would love to see a contiguous Rim of the Valley multi-use trail. It would be great to be able to do a huge loop on one continuous trail around the Valley!"*

### Other Recreational Uses

The study team received a number of comments regarding the consideration of existing recreational uses such as hunting, hang gliding, rock climbing, dog walking, geocaching, and shooting. Some people expressed support for continuing these uses in national forests where they are currently allowed, while others opposed some of these uses. Some felt that hang glider launch and landing sites, recreational cabins, and ski areas in the Angeles National Forest should continue to be permitted. Some respondents supported access for off-highway vehicles, while others opposed it.

### Recreation Fees

Most of the commenters asked that no fees be added to areas that are now free to park and access. However, some respondents suggested that they would support fees that would be used to incentivize transit ridership.

### Recreational Facilities

Some commenters expressed the need for improved recreational facilities such as restrooms and water fountains at trailheads and improved signage on trails. Several commenters suggested providing camping opportunities such as additional family and group sites and backpacker camps along the Rim of the Valley Trail while others were opposed to increasing the number of camping opportunities in this area.

*"My vision...includes a dirt trail system that loops the entire area. The trails do not need to be elaborately constructed but should have water . . . and restrooms available at regular intervals and good signage."*

### Access

One area of special concern in the comments was the need to provide access to parks and open space for all people to improve quality of life and foster healthy connections between people and nature, especially urban youth. Some commenters suggested that part of the significance of the Rim of the Valley study area is that it would increase the opportunities and access for urban communities currently underserved by parks and open space. Others commented that the study should evaluate opportunities to provide access to trails and natural areas for people without cars.



Mountain biker on Cheesboro trail. NPS Photo.

---

# Summary of Public Scoping Comments - What We Heard From You

---

## Issues and Opportunities to be Considered in the Study Process

The following sections summarize comments provided on specific issues and opportunities that should be considered in the study process.

### Expansion of Santa Monica Mountains National Recreational Area (SMMNRA)

Many commenters support the expansion of SMMNRA to include wildlife corridors and recreational trails throughout the study area. Some felt that the SMMNRA should only be expanded to include areas that are geologically part of the Santa Monica Mountains and that a separate unit designation, such as a separate National Recreation Area (NRA), would be more appropriate for areas in the Santa Susana and San Gabriel Mountains.

Some comments encouraged the NPS to finish its land acquisition in the SMMNRA before designating additional areas. Some comments did not support the use of taxpayer funds to study or create a new park. Others wanted to see NPS acquire as much land as possible before development pressures return with an improved economy.

Some comments supported the idea of a new NRA managed by the U.S. Forest Service in the San Gabriel Mountains. Other comments suggested that NPS management of the Angeles National Forest would increase the emphasis on recreation and interpretation in the San Gabriel Mountains.

*“An expansion of the Santa Monica Mountains National Recreation Area would protect habitat and migration corridors for wildlife like the mountain lion and bobcat, expand recreational opportunities and ensure equal access to open space for Los Angeles’ diverse population.”*

*“I see the Rim of the Valley project as an expansion of the SMMNRA with the important objective of protecting a Mediterranean ecosystem in close proximity to a large urban area.”*

### NPS Role

Many commenters felt that NPS would provide a much needed coordination role for the many local, regional, and state agencies that operate open space in the study area. Some felt that NPS designation might enhance funding opportunities for these areas. Some commenters suggested that the multi-jurisdictional partnership between the National Park Service and state and local agencies in the Santa Monica Mountains be a model for management

options considered in the Rim of the Valley Corridor Study. Others questioned the need for another layer of bureaucracy. Some comments supported a new NPS designation as long as there would be no restrictions on the use of mountain bikes in areas where they are currently allowed and that any new trails would allow multiple use. A number of respondents felt that the NPS should seek a balance between recreational uses and natural resource preservation in considering study recommendations.

### Fire Management

Fire management concerns were prominent in the public comments. Many expressed concerns regarding how fuel modification and fire management could be affected by a national park designation.

*“[I] would love to see community grants for fire prevention.”*

*“Given the large area of urban-wildland interface . . . within the Rim of the Valley, we note the need to develop standards for, and incorporate analysis of potential fuel modification impacts in . . . order to minimize conflicts and negative edge effects.”*

### Private Property

The NPS received comments from homeowners and cities regarding potential impacts on private property rights. Some wanted clarification on the statement that lands would only be purchased from “willing sellers.” Other respondents felt that the impacts of any proposal on private property rights should be fully disclosed and evaluated, while others stated that the authorization of the study might be considered a “taking” and was unconstitutional. Some expressed concern that any increase in public lands would mean a decrease in tax revenue. Several respondents requested that the study evaluate the costs and benefits of easements on private property owners should this be considered in the study recommendations.

*“I think the national government has enough land already and does not need to take over more as in the Rim of the Valley project.”*



# Summary of Public Scoping Comments - What We Heard From You

## Cost and Funding

Some of the comments raised concerns that new expenses resulting from recommendations in the Rim of the Valley Study could further strain operations, maintenance and land acquisition budgets of federal, state and local park agencies. Some commenters asked if an increased federal presence would allow local communities access to more federal funding. Some people suggested that the study proposals recommend funding for land acquisition from willing sellers. Some commenters expressed concern that a new designation might result in new taxes or fees. A few respondents had specific concerns about the increased emphasis on fees and revenue generation to off-set the cost of park operations in areas managed through Joint Powers Authorities.

## Scenic Views

The preservation of natural scenic vistas and views was important to many of the commenters. Specific scenic locations that were mentioned include the Arroyo Seco Scenic Highway, Magic Mountain, the Santa Clara Divide Road, and Bear Divide in the Angeles National Forest, Oat Mountain Motorway and the Santa Clarita Woodlands Park in the Santa Susana Mountains, Sunland Tujunga in the San Gabriel foothills and La Tuna Canyon in the Verdugo Hills, Conejo Mountain and the vista from the Conejo Grade. Some comments encouraged the study to promote these vistas as places for urban dwellers to see how the city affects the land around it and to interpret the value of open space.

*“We need all the open space we can get in Southern California. Urban spaces take up so much area, and often little space is left to just enjoy the natural beauty around us.”*



NPS study team tours the undeveloped land at the Santa Susana Field Laboratory. NPS Photo.

## Public Health and Safety

Comments supported an increase in recreational opportunities to improve physical and psychological health and well-being, especially programs that encourage children to recreate outdoors and reduce obesity and “nature deficit disorder.” Some commenters suggested that the study should acknowledge that municipalities have jurisdiction over public health and safety issues.

A number of comments expressed concerns about public safety. These concerns addressed issues such as fire prevention, fire egress planning for trails and roads, brush clearing policies, emergency communication, and vehicle security. Some commenters suggested that trails should be clearly marked so hikers know how far they may be traveling. Flood control facilities within the study area should continue to be maintained by the agencies that have completed this work for many years. Some commenters expressed concern about the safety of converting the Santa Susana Field Laboratory lands to public open space.

*“Remember that the original concept of Rim of the Valley was to provide access to nature for underserved communities (environmental justice) part of the significance is the closeness to large urban populations.”*



Waterfall at Solstice Canyon. NPS Photo.

---

# Frequently Asked Questions

---

## **What is a special resource study and why is NPS conducting one here?**

The Consolidated Natural Resources Act of 2008 (P.L. 110-229 – May 2008) directed the NPS to conduct a special resource study of the area known as the Rim of the Valley Corridor, generally including the mountains encircling the San Fernando, La Crescenta, Santa Clarita, Simi and Conejo Valleys in California. The purpose of this special resource study is to determine whether any portion of the Rim of the Valley Corridor study is eligible to be designated as a unit of the national park system or added to an existing national park unit. The study will also explore other ways that private and governmental entities can protect resources and provide more outdoor recreation opportunities. Study recommendations may consider the entire study area or only portions of it.

## **What does it mean to be in a study area?**

The area that Congress directed the NPS to study (study area) is not a proposal for a national park. It is simply an area in which the NPS is asked to evaluate natural and cultural resources. Resources found to be nationally significant must also meet NPS criteria for suitability and feasibility to be considered for inclusion in the national park system. The NPS will evaluate resources based on existing data (e.g. existing scientific studies and inventories, national register nominations, environmental reports), and will work with scientists, historians, local researchers, community members, and others who know the area's resources. As the NPS evaluates resources in the study area, often the focus of the study is narrowed. If significant resources are identified, the NPS will identify a range of options or alternatives to protect these resources and provide for public enjoyment. Alternatives may focus on a part of the study area, or may relate to the entire study area. For example, the study may evaluate an alternative that focuses on trail/open space corridors or specific historic sites with national significance. The alternatives may also include a range of roles for the NPS including collaborative opportunities to protect resources, technical assistance, as well as opportunities that do not include any long-term NPS role.

## **How will the NPS address the broad range of scoping comments and concerns of the public?**

Using the direction provided by Congress in the study legislation, the study team will explore a wide range of ideas and alternatives for protection and public enjoyment of any nationally significant resources that are identified. Once a range of alternatives is identified, including a "No Action" alternative, the NPS will ask for additional public comment on these concepts before refining them for the environmental analysis.

## **How will this study affect management by local communities and existing agencies?**

In this study, the NPS will only consider management alternatives that respect and retain the authorities of existing local, state and federal agencies, including USFS management

of the Angeles and Los Padres National Forests. The NPS will seek to work collaboratively with local communities and existing agencies.

## **How will this study affect property rights?**

This study will only consider alternatives that would respect private property rights. A new national park unit designation, if recommended by this study and authorized by Congress, would not give the NPS any regulatory authority over private land. If the study recommends any NPS land acquisition, it will stipulate that the NPS would only acquire land from willing sellers.

## **This study area overlaps with the study area for the San Gabriel Watershed and Mountains Special Resource Study. How does that effort relate to this study?**

The San Gabriel and the Rim of the Valley Corridor studies were each authorized through separate legislation, at different times and for different geographic areas. There is an overlapping portion of the two study areas in the western San Gabriel Mountains. Because this area is being studied through the San Gabriel Watershed and Mountains study, information from that study will be considered and integrated as appropriate into the Rim of the Valley Corridor study. The Draft San Gabriel study report will be released for public comment later this year. To learn more about the San Gabriel Watershed and Mountains Special Resource Study, please visit: [www.nps.gov/pwro/sangabriel/](http://www.nps.gov/pwro/sangabriel/).

## **Will there be any environmental compliance documents prepared for the Rim of the Valley?**

In accordance with the National Environmental Policy Act (NEPA), the NPS will conduct an environmental review of the alternatives and the potential impacts of resource protection considerations as part of the Rim of the Valley Corridor Special Resource Study. At this time, it has not been determined whether an Environmental Assessment or an Environmental Impact Statement will be prepared, however, comments submitted during the public scoping process will aid in the preparation of either document. The public will also have an opportunity to review the environmental document and submit additional comments.

## **Will there be more opportunities for comment?**

The study team accepts comments at any time and can provide updates to individuals, agencies or groups. The NPS will hold public meetings at key stages in the study process. The next opportunity for public dialogue on this study will be after conceptual alternatives are developed. The public comments in this stage will help refine the alternatives prior to conducting the formal environmental analysis under National Environmental Policy Act (NEPA).


# Next Steps

## Resources Analysis and Alternatives Development

The next phase of the special resource study will involve evaluation of resources within the study area to determine whether and where there are nationally significant natural or cultural resources, and to identify recreation needs and opportunities. The NPS Study team will research and evaluate these resources based on existing data, and will work with agency staff, scientists, historians, local researchers, community members, and others who know the area's resources. The resource analysis will inform the development of management alternatives which will be considered in the study.



Check-in table at the public meeting in Tujunga. NPS Photo.

Next Steps	
Planning Activity	Dates
<b>Public Start-up/Scoping</b> Determine the "scope" or overall approach to the study. Host public meetings. Collect and analyze public comments.	2010 - 2011
<b>Resource Analysis: Significance and Suitability</b> Explore recreation and conservation needs. Identify nationally significant resources (outstanding examples of a particular type of resource). The NPS considers a resource to be suitable for inclusion in the national park system if it: 1) is not already adequately represented in the national park system, or 2) is not comparably represented and protected for public enjoyment by another land managing entity.	2011 - 2012 
<b>Feasibility Analysis</b> Identify feasible roles for the NPS.	2012
<b>Development of Alternatives</b> Develop alternative concepts. Host public meetings and invite the public to help refine and develop these concepts through written comments and participation in workshops.	2012
<b>Environmental Impact Analysis</b> Through a National Environmental Policy Act (NEPA) process, the NPS will analyze the potential for environmental and socioeconomic impacts of the alternatives.	2013
<b>Draft Report</b> Publish the findings of the special resource study (analysis of resource significance, suitability, feasibility, proposed alternatives, and environmental impact analysis). Host public meetings and solicit public comments on the draft report.	2014
<b>Final Report/Transmittal to Congress</b> The final report includes a recommendation for a preferred management option for the area. If NPS involvement is recommended, implementation would require further congressional action.	2014



National Park Service  
Rim of the Valley Corridor Special Resource Study  
National Park Service  
570 W. Avenue 26, #175  
Los Angeles, CA 90065

EXPERIENCE YOUR AMERICA™



National Park Service  
U.S. Department of the Interior

#### Contact Information

**Mail:** National Park Service  
570 W. Avenue 26, #175  
Los Angeles, CA 90065

#### Core NPS Study Team:

Anne Dove  
Project Manager  
(323) 441-9307

Margie Steigerwald  
Outdoor Recreation Planner  
(805) 370-2373

**E-mail:**  
pwr\_rimofthevalley@nps.gov

**Website:**  
<http://www.nps.gov/pwro/rimofthevalley>

## How to Stay Involved

Learn about the special resource study process:

- Visit the study web site:  
<http://www.nps.gov/pwro/rimofthevalley>
- Sign up for the study mailing list or e-mail list
- Watch for announcements about future public meetings or workshops to share information, discuss issues, concerns, and potential outcomes.

Do you have information to share?  
Please send us any information  
or sources of information on  
your community's history, natural  
resources and recreational areas  
that you think would help our  
analysis.

Send us your thoughts, comments,  
and information by letter, e-mail  
([pwr\\_rimofthevalley@nps.gov](mailto:pwr_rimofthevalley@nps.gov)), or  
through our web site.