

STLI-E.018

CRBIB#012861

PROPERTY OF LIBRARY 76

DIVISION OF CULTURAL

RESOURCES, NARC

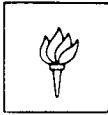
356/133462

Statue of Liberty National Monument

INVENTORY

OF HISTORIC FURNISHINGS AT ELLIS ISLAND

October, 1982



**New York University**  
*A private university in the public service*

Graduate School of Arts and Science  
Museum Studies Program

19 University Place, Suite 308  
New York, N.Y. 10003  
Telephone: (212) 598-3461

October 15, 1982

PREFACE

The New York University Museum Studies Program, Faculty of Arts and Science, has maintained a close working relationship with the Statue of Liberty-Ellis Island National Monument, National Park Service, since 1978. This has included internships, lectures, on-site visits, employment, and training opportunities for graduate students in museum studies. The present contract for an Inventory and Interim Storage Arrangement of furnishings at Ellis Island was for an eight-week period, ending 27th of August, 1982. It afforded advanced training for selected graduate students; and aided in the formation of museum collections, the preservation and interpretation of Ellis Island, a unique historic site.

This report provides a description of method and the inventory of 8,612 artifacts in some 200 rooms and additions to the Main Building. The Museum Studies inventory group who worked diligently and resourcefully under difficult physical conditions, remain enthusiastic and dedicated to the goals of this project. Their work provides the basis of this report. They are: Judith Brundin, Patra Cogan, Jillana Hellman, Donald Herbst, and Diane Zorich.

The Museum Studies Program wishes to express its appreciation to Mr. Edward L. Kallop, Jr., Staff Curator, North Atlantic Region, and to Mr. David L. Moffitt, Superintendent, Statue of Liberty National Monument-Ellis Island, for the opportunity to work on the Ellis Island project. Grateful appreciation is also expressed for the assistance provided by Mr. William DeHart, Supervisor, Mr. Paul Kinney, Curator, of the Statue of Liberty National Monument; and to Mr. Frank Pellicone, Mr. Bill Williams, Mr. Peter Dervis, Ms. Amelia Richardson-McCottex, Ester Sustaita, and the Interpretation Staff.

Flora S. Kaplan, Project Director  
Museum Studies Program  
New York University

Contract No. OM  
Order No. PX1600-2-0485  
June 21, 1982  
Amend 1 June 23  
2 August 27

FSK/as

TABLE OF CONTENTS

	Page
PREFACE . . . . .	<i>i</i>
I. LIST OF TABLES . . . . .	<i>iii</i>
II. LIST OF ILLUSTRATIONS . . . . .	<i>iv</i>
III. INTRODUCTION . . . . .	1
Project Purpose . . . . .	1
Inventory Method . . . . .	2
IV. INTRODUCTION TO TABLE IV . . . . .	22
V. INTRODUCTION TO TABLE V . . . . .	48
VI. FUTURE SUGGESTIONS . . . . .	52
VII. A SELECT ANNOTATED BIBLIOGRAPHY . . . . .	60

LIST OF TABLES

		Page
Table		
1.	Major Inventory Categories by Roman Numerals and Category Totals . . . . .	6
2.	Major Types in Each Inventory Category by Capitol Letters and Type Totals . . . . .	7
3.	Arabic Numeral Categories . . . . .	8
4.	Object Location by Room in the Main Building, Kitchen and Laundry Building, and Dormitory and Baggage Building, Island One . . . . .	23
5.	Objects of Possible Historic Significance. .	49

## LIST OF ILLUSTRATIONS

Figure		Page
1.	Map - Basement Plan, Main Building . . . .	53
2.	Map - First Floor Plan, Main Building . .	54
3.	Map - Second Floor Plan, Main Building . .	55
4.	Map - Third Floor Plan, Main Building . .	56
5.	Map - Kitchen and Laundry Building . . . .	57
6.	Sample Inventory Card . . . . .	58
7.	Sample Inventory Tag . . . . .	59

## INTRODUCTION

In the last 62 years, the 35 buildings on Ellis Island have served many different functions. Built in 1892, these facilities were used as an immigrant processing station until 1954. During those years, it was also used intermittently as a detention center for undesirable aliens, as a Public Health Service Hospital, and as a Coast Guard Station. All facilities were closed in 1954, and the buildings were allowed to deteriorate, even as Ellis Island was proclaimed a national monument in 1965. In 1976, Ellis Island was reopened for limited public tours.

Work began on the structural stabilization of the Main Building in the mid-1970s. Funding is currently being sought for renovation of the buildings, and of particular rooms in the facility for a museum, storage, and office areas. This project and report are an initial part of National Park Service plans for the renovation of Ellis Island.

## Project Purpose

In June, 1982, New York University's Museum Studies Program, under the direction of Professor Flora S. Kaplan, received a grant from the National Park Service to inventory (organize and locate) as many furnishings and objects as possible, in the Main Building and other facilities on Ellis Island, during an allotted eight-week period. The project began on July 6, 1982, with the first week assigned for planning the inventory strategy and methodology. On August 27, 1982, the project was completed with the last week set aside for assembling the final report. The inventory group consisted of three full-time and two part-time workers, who were all graduate students in the New York University Museum Studies Program. They are as follows: Judy Brundin, work-leader, full-time, Donald Herbst, work-leader, part-time, Jillana Hellman, Diane Zorich, full-time, and Patra Cogan, part-time. At the end of the project, the workers had inventoried all areas of the Main Building (four floors), the first floor of the Kitchen and Laundry Building (referred to as KL Building in this report), and the room called the "Kitchen" on the first floor of the Dormitory and Baggage Building. (For further information on these areas and floorplans of them, see pages 53, 54, 55, 56, 57.)

In accordance with the grant, the inventory group was concerned with locating, tagging, identifying, and accounting for all movable furnishings on Ellis Island, that could be accomplished in the eight-week period, and with the identification of objects of special and possible historic significance. The special objects were to be removed from detrimental environments and insecure areas to a temporary storage room. Insofar as this was possible, the work group inventoried and removed small objects into Room 307, in the Main Building, the room designated for this purpose by the National Park Service. Of concern, however, are those special

objects that were too bulky and heavy to relocate in Room 307. Many of these large items are of possible historic significance and they should be removed to more secure areas as soon as possible. For further information and a list of these objects, see page 48.

All objects which were not attached to walls, ceilings, or floors were inventoried. For example, lighting fixtures which were attached to the ceilings were not included in the inventory count, whereas the same unattached fixtures were included. Additionally, objects in very poor condition and often in pieces, so they were no longer recognizable, were not inventoried.

### Inventory Method

The most difficult task the inventory group faced, was developing a methodology for the inventory. There was a wide variety of furnishings, spanning many decades, in the buildings on Ellis Island. It became clear that usual museum registration methods (see: Dudley, 1979) were not applicable in this situation, and that a flexible system was needed. After much consideration, a three-part system was devised. The first part is represented by a Roman numeral, and designates the most general grouping or type object, i.e., "I. Tableware," "IV. Light Fixtures," "V. Furniture." These general groups or types are further subdivided by a capital letter, which designates more specific names, for these types of objects, i.e., C. Bowls, B. Desk Lamps, B. Chairs, in I, IV, and V, respectively. Finally, the third part of the system is represented by an Arabic numeral, and designates further breakdowns by styles or manufacturers, i.e., 10. Albert Pick & Co., 2. gooseneck lamp, 3. metal folding chair. The final entries on the inventory sheets contain the following:

- I. Tableware - C. Bowls - 10. Albert Pick & Co.
- IV. Lighting Fixtures - B. Desk Lamps - 2. gooseneck
- V. Furniture - B. Chairs - 3. metal, folding

Thus, (I-C-10), (IV-B-2), and (V-B-3) represent specific object identification numbers.

Tables I, II, and III, list the total number of objects of each type. Table I, "Major Inventory Categories by Roman Numerals and Category Totals," gives the most general breakdown of numbers according to roman numeral headings, (see page 6) Table II, "Major Types in Each Inventory Category by Capitol Letter and Type Totals," is the more detailed and gives numbers of capitol letter sub-categories within the roman numeral headings, (see page 7,) Table III, "Styles in Types of Each Inventory Category by Arabic Numbers and Style Totals," begins on page 8 is the most detailed and gives a breakdown of numbers according to specific stylistic differences (the Arabic number groupings.)

10/15/82

Within certain Roman numeral categories, certain objects formed a miscellaneous group. They did not easily fit into the three-part system. In this case, the capitol letter category was listed as "Miscellaneous." For example, under the Roman numeral category Kitchen Utensils (II), objects were thought to be diverse and one-of-a-kind items. Some examples included: cafeteria trays, napkin holders, muffin trays, etc. The capitol letter category for this group became "Miscellaneous." In the case of muffin trays, they were found to be alike and their object identification number is II-A-4, which represents Kitchen Utensils-Miscellaneous-Muffin Trays. Use of the capitol letter category "A", in this case, represents the term "Miscellaneous." Clearly stated, all inventoried objects received a three-part identification number and use of the term miscellaneous did not alter the three-part system.

There were objects which did not fit into any particular general or Roman numeral category. The Roman numeral category "Miscellaneous" (XIII) was devised for this grouping. The objects were then described as to common name and style differences. For example, shoes were found and so designated: XIII-C-3, which represents Miscellaneous - Clothing - Men's shoes.

There were also objects which did not fit into any categories at all. In this case, the object was identified as a Miscellaneous - Miscellaneous (XIII-B) item. For example, Chinese checkers, checkerboard, were given identification number XIII-B-13.

All objects were located and labelled according to the room numbers shown on recent electrical floorplans, provided to the inventory group, by the National Park Service. Room numbers were painted in white enamel on the doorframe of each room. Four of the five maps in Appendix A are the National Park Service electrical floorplans; the fifth map was hand-drawn by a member of the inventory group. The four National Park Service plans are of the Basement, First Floor, Second Floor, and Third Floor, of the Main Building, Ellis Island. The fifth plan is of the Kitchen and Laundry Building on the first floor, adjacent and directly to the west of the Main Building. Room numbers were assigned to the fifth plan by the inventory group. All furnishings in all rooms on the five plans were completely inventoried.

Each inventory card is marked on the top right corner with the room number where a particular object was located at the time of the inventory. (See Sample Card, page 58 .) Separate cards were used for every object or group of like-objects in each room, even if similar object(s) was found in previous rooms. For example, an inventory person, entering a room, inventories a new style of chair within the general grouping, "Furniture." An inventory card is completed on both sides. The chair is photographed, and assigned a new Arabic number, consecutively, following the order of chairs already inventoried. The inventory card and the new chair become the "prototypes" for this new style.



Two rooms away, the same style chair is found, and a separate card is filled out with its new room number on it. The number of such chairs found in the room are also entered on the card. The chairs are given the same number as the "prototype," but the inventory card is only filled out on the front side, without a photograph. This second card is called a "supplementary" card.

"Room Report" was written on an inventory card if a room was found empty of furnishings. The report states what sort of room it was, e.g., bath, elevator, etc., and notes it was empty.

Table 4, "Object Location by Room in the Main Building, Kitchen and Laundry Building, and Dormitory and Baggage Building, Island One," (page 23 ) lists all objects inventoried by room numbers. Each object was numbered with the room number and inventoried with 1" white circular tags; the room number is marked on the reverse side. (See 1" white circular tags, sample, page 59 ) Type specimens of large groups of objects, in good condition, were tagged. Where some groups of objects were too large to be tagged individually, they were simply recorded on inventory cards. (For example, items like pipes, tiles, were so inventoried.)

TABLE 1. MAJOR INVENTORY CATEGORIES BY ROMAN NUMERALS AND  
CATEGORY TOTALS

<u>Roman Numeral Categories</u>	<u>Number of Objects</u>
I. TABLEWARE	2989
II. KITCHEN UTENSILS	1442
III. MACHINE PARTS	19
IV. LIGHT FIXTURES	131
V. FURNITURE	2310
VI. PRINTED MATTER AND PAPERS	295
VII. MAINTENANCE EQUIPMENT	76
VIII. MEDICAL EQUIPMENT	33
IX. PLUMBING FIXTURES	3
X. APPLIANCES	98
XI. ARCHITECTURAL ELEMENTS	1088
XII. SIGNS	6
XIII. MISCELLANEOUS	<u>122</u>
Total Inventory Count 8612	

TABLE 2. MAJOR TYPES IN EACH INVENTORY CATEGORY BY CAPITAL LETTERS AND TYPE TOTALS

I. TABLEWARE	
A. Saucers	1315
B. Plates	691
C. Bowls	942
D. Oval Platters	36
E. Miscellaneous	5
	<u>2989</u>
II. KITCHEN UTENSILS	
A. Miscellaneous	1442
III. MACHINE PARTS	
A.	19
IV. LIGHT FIXTURES	
A. Hanging Types	127
B. Desk Lamps	3
C. Stand-up Lamps	1
	<u>131</u>
V. FURNITURE	
A. Bed Parts	1123
B. Chairs	401
C. Cabinets	491
D. Tables	93
E. Miscellaneous	52
F. Desks	54
G. Benches	91
H. Safes	5
	<u>2310</u>
VI. PRINTED MATTER AND PAPERS	
A. Books	10
B. Periodicals, Manuals, Booklets	20
C. Blank Forms	50
E. Filled-in Forms	Misc.
F. Personal Notes, Hand- written Items	5
G. Miscellaneous	10
H. Mimeographed Government Documents	150
	<u>295+</u>

TABLE 2 (Cont.)

VII.	MAINTENANCE EQUIPMENT	
	A. Miscellaneous	76
VIII.	MEDICAL EQUIPMENT	
	A. Hospital Equipment	29
	B. Dental Equipment	<u>4</u>
		33
IX.	PLUMBING FIXTURES	
	A. Miscellaneous	3
X.	APPLIANCES	
	A. Kitchen	45
	B. Miscellaneous	<u>53</u>
		98
XI.	ARCHITECTURAL ELEMENTS	
	A. Construction Materials	850+
	B. Doors	17
	C. Windows	118
	D. Miscellaneous	<u>103+</u>
		1088+
XII.	SIGNS	
	A. Miscellaneous	6
XIII.	MISCELLANEOUS	
	A. Baggage	11
	B. Miscellaneous	46
	C. Clothing	14
	D. Office Supplies	<u>51</u>
		122

TABLE 3. ARABIC NUMERAL CATEGORIES

I. TABLEWARE

A. Saucers

1. Albert Pick, green stripe	31
2. Albert Pick, plain	13
3. Bailey Walker, flat edge	36
4. Bailey Walker, round edge	32
5. Cafe Au Lait, large saucers	34
6. Cafe Au Lait, small saucer	1
7. Carr China Co., flat edge	232
8. Carr China Co., round edge	4
9. Desert Ware	3
10. Minerva, O.	1
11. Coom China Co.	1
12. Greenwood China Co.	12
13. Iro-Tan	113
14. Jac-Tan	3
15. Jackson	14
16. Jackson China	19
17. Jon Wanamaker	25
18. McNicol, small saucers	6
19. McNicol China, large saucers	49
20. Jackson China, very small saucers	5
21. Schwartzburg	5
22. Sterling China Co., large	18
23. Sterling China Co., small	7
24. Scammell's China	163
25. Shenango China	6
26. Shenango China	17
27. Sterling China Co.	7
28. Shenango China	7
29. Edwin M. Knowles China	1
30. Trenle China	9
31. U.S.Q.M.C. saucers	159
32. McNicol China, flat	25
33. Wellsville China	1
34. Warwick	2
35. L. Barthe, Son	1
36. Inca Ware	2
37. John Maddock & Sons	1
38. Mayer China	1
39. Scammell's China	1
40. James M. Shaw	1
41. Bailey Walker, specials	3
42. Cook China Co.	1
43. Unidentified saucers	104
44. Buffalo China	1
45. Tin saucers	130
46. Iroquois	2
47. Crescent Pottery	1
48. Mayer China, striped	1
49. Lamberti China	3
50. Mercer Hotel Ware	1

Total 1315

I. TABLEWARE (Cont.)

B. Plates

1.	Albert Pick Co., Inc.	23
2.	Buffalo China (insignia)	5
3.	Bailey Walker	9
4.	Cafe Au Lait	26
5.	Carr China	56
6.	Greenwood China	1
7.	Iroquois China	1
8.	Jackson China	16
9.	Jac-Tan	8
10.	Carr - L. Barth & Sons	3
11.	Mayer China	8
12.	McNicol China	74
13.	O.P.C.O.	5
14.	Shenango	130
15.	Scammell	99
16.	Sterling	19
17.	U.S.Q.M.C. Plates	120
18.	Tepco	2
19.	Toulaine China	1
20.	Wellsville	25
21.	Wallace	20
22.	Jackson China (special)	1
23.	Fraureuth	3
24.	Saxon China	1
25.	Mercer Hotal Ware	25
26.	Royal Ironstone China	1
27.	Homer Laughlin	1
28.	Bauscher	1
29.	Homer Laughlin (special)	1
30.	Tin Plate	1
31.	Unidentified Plates	5

Total 691

C. Bowls

1.	Carr China Co.	1
2.	James M. Shaw & Co.	2
3.	C.B.P. Co.	1
4.	Warwick	1
5.	Cafe Au Lait	4
6.	Royal Ironstone China	1
7.	S.C. Richard	1
8.	Iroquois	16
9.	M China L	1
10.	Albert Pick & Co.	1
11.	Shenango China	1
12.	New Jersey China	1
13.	Scammells	23
14.	Sterling	30
15.	McNicol, small bowls	5
16.	McNicol, large bowls	2

I. TABLEWARE (Cont.)

C. Bowls

17.	Shenango	1
18.	McNicol, very small bowls	3
19.	Wood & Sons	3
20.	U.S.Q.M.C.	246
21.	Buffalo China	333
22.	Homer Laughlin	250
23.	Stamped pattern bowl	1
24.	Albert Pick & Co. (special)	1
25.	Buffalo China (special)	1
26.	James M. Shaw & Co. (special)	1
27.	Buffalo China (special)	1
28.	Unidentified bowls	8
29.	Boonton	2
	Total	<u>942</u>

D. Oval Platters

1.	Bailey-Walker	17
2.	Syracuse China	1
3.	Crest platters	2
4.	Shenango, large	2
5.	Jackson China	2
6.	Greenwood China	1
7.	Shenango China, small	1
8.	Fraureuth, insignia	1
9.	Edwin M. Knowles China Co.	2
10.	Fraureuth	2
11.	Schwarzburg	1
12.	McNicol China, small	1
13.	McNicol China, large	1
14.	Willets Vitreous	1
15.	Unidentified platter	1
	Total	<u>36</u>

E. Miscellaneous

1.	Casserole dish top	1
2.	Glasses, cups	4
	Total	<u>5</u>

TABLEWARE

GRAND TOTAL 2989

II. KITCHEN UTENSILS

A. Miscellaneous

1.	pitchers	18
2.	cafeteria trays (partitioned)	767
3.	napkin holders	12
4.	muffin trays	51
5.	silverware	148
6.	tube pans (large)	4

II. KITCHEN UTENSILS (Cont.)

A. Miscellaneous	
7. basin	1
8. soup pots	12
9. food processing equipment	4
10. soup ladles	6
11. round and oval trays	25
12. frying pans and lid	5
13. pots	7
14. oven trays	22
15. draining boxes	2
16. large food trays	7
17. roasting pot cover	1
18. cake pans	50
19. pot covers	30
20. baking dishes/pans	8
21. boxed baking pans (connected)	55
22. metal bowls (large)	12
23. meat grinders	2
24. crates (for dishwasher)	5
25. long-handled spoons	7
26. oval roasting pan and lids	3
27. grill tray	4
28. tube pans (small)	3
29. square trays	27
30. rectangular roasting pan and lid	1
31. food scale	1
32. colanders	5
33. metal bowls/cups (small)	7
34. draining tray	1
35. bread pans	38
36. garbage can lids	4
37. two-tiered pot	1
38. tart cups	30
39. coffee machine strainers (with side handles)	2
40. coffee machine strainer (with wire-swinging handle)	1
41. salt and/or pepper shakers	2
42. circular strainer	1
43. pie tins	15
44. cafeteria trays (nonpartitioned)	9
45. teapot	1
46. tea tin	1
47. glass jug	1
48. conical strainer	3
49. food pans (shallow)	9
50. wisks	5
51. pitcher pail	1
52. food pressing equipment	2
53. deep-fry baskets	3
Grand Total	1442



III. MACHINE PARTS

A. Miscellaneous	
1. mixing spoon (for food mixing machine)	1
2. hooked-end rod part	2
3. spindle wire part	1
4. rotary disc	1
5. laundry pressing machine, possibly for pressing sleeves	1
6. drying machine	1
7. laundry pressing machine	1
8. laundry steamer	1
9. laundry pressing table, with fabric top	1
10. drying machine	2
11. laundry pressing table, long	2
12. laundry basket, hamper	1
13. laundry presser	2
14. pants drying machine (form)	1
15. ironing machine	1
16. large clothes washing machine	<u>2</u>
Grand Total	19

IV. LIGHT FIXTURES

A. Hanging Type	
1. Metal reflector	3
2. Statue of Liberty lights	75
3. Cone-shaped lamp, metal	1
4. Semi-spherical, metal	40
5. Bell-shaped, glass, upturned rim	1
6. Glass bulb attachment	<u>7</u>
Total	127
B. Desk Lamp	
1. Rectangular stand, horizontal arm	1
2. Gooseneck	<u>2</u>
Total	3
C. Stand-up Lamp	
	<u>1</u>
Grand Total	131

V. FURNITURE

A. Bed Parts	
1. crib frames (decorative)	3
2. headboards (metal)	218
3. footboards (metal)	52
4. mattress frames	402
5. flat rod mattress frames	51
6. crib frames (plain)	<u>1</u>

V. FURNITURE (Cont.)

A. Bed Parts

7. assembled bed frames	17
8. pillows	28
9. mattresses	25
10. unassembled crib frames (plain)	25
11. head-footboards (new style)	299
12. headboard-footboard (wooden)	2
Total	<u>1123</u>

B. Chairs

1. Bentwood type	37
2. Metal, bent back, armless	54
3. Straight back, wood, armless	2
4. Wood, Windsor type	47
5. Wood, slatted back, armless	46
6. Slatted back swivel armchair	6
7. Wood Captains type	16
8. Wood, swivel, armless	5
9. Metal, round back, armchair	4
10. Metal folding	56
11. Wood, armless	28
12. Straight back, slatted armchair	31
13. Wood, horizontal slatted back	2
14. Wood armchair, fabric seat	2
15. Wood, slatted back, rounded arms	2
16. Metal, round rim, small seat	2
17. Slatted back, swivel, rounded armchair	3
18. Red and grey wood armchair	1
19. Armless, swivel, slatted back	1
20. Fabric covered chair	1
21. Wicker	1
22. Connected wood chairs	36
23. Windsor type, spindle back and legs	3
24. Wood, cushions and wheels	1
25. Metal swivel, cushions, wheels	1
26. Large wood, curved arms	1
27. Wood, armless, turned legs	3
28. Wicker type armchair, cushions	1
29. Wood armless, curved back	1
30. Overstuffed	2
31. Wood, horizontal back slats	1
32. Captains type, spindle legs	3
33. Small, Windsor type	1
Total	<u>401</u>

C. Cabinets

1. cream-colored	1
2. twelve flat drawers	1
3. wrought-ironed back	1
4. glass-panelled medicine	1
5. plain chest of drawers	6
6. decorative chest of drawers	1

V. FURNITURE

C. Cabinets

7.	white chest of drawers	2
8.	nightstand	29
9.	turn-knob lockers	3
10.	magazine stand	1
11.	flat-handled file	31
12.	2-door green metal	1
13.	3 drawer bureau	1
14.	glass-doored armoire	3
15.	red small wardrobe	24
16.	slot-shelf supply	1
17.	3 glass doors	1
18.	counter top	1
19.	built-in counter top	1
20.	2 panelled doors	1
21.	2 glass door, shelved	5
22.	green single door locker	2
23.	round-knobbed bureau	1
24.	lime green	2
25.	green 2-per-set lockers	10
26.	brown 2-in-one lockers	193
27.	small drawer file	6
28.	grey 2 drawer file	1
29.	carved mahogany	1
30.	faded green file	12
31.	lime green, 2 doors	1
32.	panelled door wood lockers	3
33.	1 door metal	2
34.	8-drawer file	1
35.	2-set metal lockers	58
36.	green 3-per-set lockers	2
37.	2-door plain wood	3
38.	stackable file	20
39.	gold handle file	2
40.	4-drawer, wooden, side-panelled file	4
41.	metal-top, wood-body	1
42.	black, 2-door	1
43.	ornate-corniced, wood	2
44.	vanity stand	1
45.	blue-grey, metal lockers	10
46.	apron-top, shelved	1
47.	panelled-door wardrobe	1
48.	keyhole lockers	6
49.	hatch-lock locker	1
50.	tan, 3-shelved	1
51.	hospital stand	1
52.	red, large wardrobe	10
53.	mirrored bureau	1
54.	green bureau	1
55.	wide-drawer file	2
56.	rod-handled file	2
57.	white, metal	1
58.	sliding-door metal	1
59.	brass-trimmed steamer	1

V. FURNITURE (Cont.)

C. Cabinets

60. map chest	1
61. roll-top	2
62. 2-door, grey metal	1
63. 7-drawer, wood file	1
64. side-button file	1
Total	<u>491</u>

D. Tables

1. small metal, glass shelf	3
2. wood and metal	1
3. butcher block	2
4. wood	1
5. wood, bottom crossbar	4
6. wood top, metal legs	12
7. wood, six legs	1
8. small bedside	1
9. small wicker	5
10. metal, one drawer	6
11. small metal, one shelf	26
12. grey, two-tiered	1
13. wood, shelves underneath	1
14. wood, two drawers	8
15. metal, six legs	2
16. wood, one drawer, one extender	1
17. ping-pong	2
18. wood, one drawer	1
19. metal stand	1
20. metal, two drawer	1
21. wood end table	1
22. metal collapsible	2
23. wood, one drawer, brass handle	1
24. wood, steel covered top	1
25. wood, no drawers	1
26. wood, one drawer, painted	1
27. wood, "Standard Furniture Co."	3
28. wood, one drawer	1
29. wood, carved, two drawers	1
30. small wood, two drawers	1
Total	<u>93</u>

E. Miscellaneous

1. metal shelving racks	21
2. wooden platform, legs	2
3. stool	14
4. ironing board, attached iron holder	1
5. bookshelf, 5 shelves	1
6. ironing board, cloth cover, folding legs	1
7. ironing board, cloth cover, metal base	1
8. couch	1
9. pole coatrack, metal hooks	2
10. bookshelf, 7 shelves, 3 sections	1
11. large metal frame coatrack	1
12. wood-frame coatrack	2

V. FURNITURE (Cont.)

E. Miscellaneous

13. wooden platform, solid base	1
14. pole coatrack, wooden hooks	2
15. pole coatrack, plastic hoods	1
Total	<u>52</u>

F. Desks

1. dark, green metal	6
2. 3-drawer, wooden, "folding"	6
3. double-drawer	19
4. 6-drawer standard	2
5. 6-drawer, wooden, "folding"	3
6. 3-drawer secretarial	1
7. wicker	2
8. 4-drawer standard	1
9. 4-drawer secretarial	4
10. light green metal	1
11. table-type	1
12. 2-tiered	1
13. double desk	1
14. "imitation-wood" metal	1
15. grey metal	1
16. dome-handled standard	3
17. metal, "folding"	1
Total	<u>54</u>

G. Benches

1. plank seat, 2-slat back, straight legs	52
2. slatted seat and back (14 slats) metal legs	3
3. 4-slat, 2-slat back, metal legs, metal brace rod	1
4. 4-slat, 2-slat back, metal legs, 2 angled brace rods, metal	1
5. 4-slat, 3-slat back, metal legs, 4 angled brace rods, metal	7
6. 5-slat seat, 3-slat back, metal legs, slat brace support	10
7. 4-slat seat, 3-slat back, metal legs, slat brace support	3
8. plank seat, no back, 6 legs	4
9. double width, no back	3
10. plank seat, no back, 2 crossed-wood leg pieces	1
11. plank seat, no back, 2 leg pieces, 2 bow-shaped wooden base supports	1
12. plank seat, vertical-slat back, straight legs	1
13. plank seat, 2-slat back, 2 leg pieces, 2 angled brace rods, metal	1
14. plank seat, solid back, arm rests, 6 legs	1

V. FURNITURE (Cont.)

G. Benches		
15.	plank seat, no back, 2 leg pieces	1
16.	garden bench, 4-slat seat, vertical-slat back, broad arm rests	<u>1</u>
	Total	91
H. Safes		
1.	cabinet for storage of records	1
2.	cabinet with exterior and interior doors	2
3.	safe deposit box	1
4.	"Diebold" safe	<u>1</u>
	Total	5

FURNITURE	GRAND TOTAL	2294
-----------	-------------	------

VI. PRINTED MATTER AND PAPERS\*

A.	Books	10
B.	Periodicals, Manuals and Booklets	20
C.	Blank forms	50
D.	Filled out forms	2 lg. bags 1 sm. bag
E.	Maps	50
F.	Personal notes, handwritten items	5
G.	Miscellaneous paper	10
H.	Mimeographed Government documents	<u>150</u>

PRINTED MATTER AND PAPERS*	GRAND TOTAL	295+
----------------------------	-------------	------

\*Time constraints on the project forced us to limit this category to the first 2 parts of our 3-part system. Items can, at a later time, be individually inventoried without changing what has already been done.

VII. MAINTENANCE EQUIPMENT

A. Miscellaneous		
1.	hand truck	8
2.	industrial floor cleaner	1
3.	large weighing scales	2
4.	wall box for electrical wiring	1
5.	buffing machine	1
6.	large metal roller machine	1
7.	large metal scoop	1
8.	lawnmowers (small)	1
9.	pump	1
10.	large metal roller	1
11.	lawnmower (large)	3
12.	large wheeled machine (possibly seed spreader)	1
13.	mop wringer	2

VII. MAINTENANCE EQUIPMENT (Cont.)

A. Miscellaneous	
14. funnels	10
15. large saw blades	2
16. pick - 2 pronged	1
17. shovel	1
18. ladders (3 types)	4
19. pick (single spike)	1
20. wheelbarrow	1
21. stancheon	4
22. fire extinguisher	4
23. Markaline	1
24. garbage cans, rectangular with triangular top	5
25. dollies	8
26. garbage cans, rectangular	3
27. garbage can, cylindrical with spring top	1
28. fire extinguisher on wheels	4
29. garbage can, rectangular on legs	1
30. pipe vise	1
	<hr/>
GRAND TOTAL	76

VIII. MEDICAL EQUIPMENT

A. Hospital Equipment	
1. doctor's scale	1
2. oxygen tank (and 1 cover)	2
3. hospital bed table	1
4. x-ray light box	1
5. pail	1
6. bin	1
7. folding screen frame	4
8. wheelchair, wood	1
9. crutches	12
10. bedpan	1
11. hospital pans and bowls	4
	<hr/>
Total	29
B. Dental Equipment	
1. dentist chair	2
2. dentist chair frame	1
3. drill machine	1
	<hr/>
Total	4
MEDICAL EQUIPMENT	
GRAND TOTAL	33

IX. PLUMBING FIXTURES

A. Miscellaneous	
1. sink with base	1
2. sink	1
3. water fountain	1
	<hr/>
GRAND TOTAL	3

X. APPLIANCES

A. Kitchen

1.	slicing machine	1
2.	coffee machine - "Duparouet"	4
3.	coffee machine	3
4.	bread slicer	1
5.	pizza oven	2
6.	stove	2
7.	vats, metal	8
8.	serving stands	3
9.	grills and lid	2
10.	flat top grill stand	2
11.	grinding machine	1
12.	dish rack	1
13.	serving cart - "Ideal Food Co."	1
14.	serving cart - "H. Barrow Co."	1
15.	kitchen storage system	1
16.	draining tables	2
17.	knife sharpener	1
18.	ice cream freezer	1
19.	cabinet freezer	1
20.	freezing unit	1
21.	large oven and stove	1
22.	dishwashers and counter	2
23.	serving cabinet	1
24.	dish cart	2
	Total	<u>45</u>

B. Miscellaneous

1.	sewing machine	3
2.	electric fan-	41
3.	metal stand for sewing machine table	3
4.	electric window fan, square	1
5.	wood sewing machine tables	3
6.	metal stand with separate laundry appliance	1
7.	small iron	1
	Total	<u>53</u>

APPLIANCES

GRAND TOTAL 98

XI. ARCHITECTURAL ELEMENTS

A. Construction Materials

1.	roofing tiles - approximately	300
2.	floor tiles, slate	200
3.	bricks	300
4.	glass tiles	50
5.	pipes	various amounts
	Total	<u>850</u>



XI. ARCHITECTURAL ELEMENTS

B. Doors

1. wood, panelled, window opening, 200 x 76 cm.	1
2. wood, panelled, window opening, 183 x 69 cm.	2
3. wood, panelled, window opening, 200 x 80 cm.	1
4. wood, panelled, window opening, 182 x 68 cm.	2
5. wood, panelled, window opening, 252 x 66 cm.	2
6. wood, panelled, window opening, 244 x 102 cm.	2
7. wood, panelled, window opening, 255 x 103 cm.	2
8. metal, window opening, 223 x 72 cm.	1
9. wood, panelled, window opening, 225 x 77 cm.	1
10. wood, panelled, window opening, 223 x 86 cm.	1
11. metal, thick frame 219 x 101 cm.	2
Total	<u>17</u>

C. Windows

1. Circular window	1
2. Semi-circular window (1/4 circle shape) approximately	55
3. square frames, cross-hatched panes	62
Total	<u>118</u>

D. Miscellaneous

1. metal cage doors	3
2. window frames, screens, doors, moldings, shutter doors, partition walls	various amounts
3. metal grating pieces	92
4. fuse box door	1
5. radiator covers	6
6. metal lamp, from exterior of building	1
Total	<u>103</u>

ARCHITECTURAL ELEMENTS

GRAND TOTAL 1088

XII. SIGNS

A. Miscellaneous

1. "Library, Assembly Hall"	1
2. "Baggage....Telegram"	1
3. "D.A.R. Occupational Shop"	1
4. white and blue directional sign	1
5. "Fire Whistle"	1
6. "Information and Offices"	1
GRAND TOTAL	<u>6</u>

XIII. MISCELLANEOUS

A. Baggage		
1. suitcases		3
2. basket container		1
3. rectangular trunks		5
4. square trunks		<u>2</u>
	Total	11
B. Miscellaneous		
1. wooden barrel		1
2. chalkboard		1
3. powdered baby formula can ("CASEC")		1
4. medicine bottles		11
5. piano		1
6. metal towel container		1
7. wall mirror (decorative)		1
8. mirror (plain)		3
9. cash registers		3
10. stokes litter		1
11. looms		2
12. radio box		1
13. Chinese checkers checkerboard		1
14. bottles and jars		6
15. ceramic container		1
16. decorative spindle element		1
17. bulletin board		1
18. metal display case		1
19. "Sunshine Biscuit" can		1
20. metal hanging rack		1
21. keys and padlock		<u>6</u>
	Total	46
C. Clothing		
1. hats		2
2. coats		3
3. shoes (individual pairs)		5
4. bags of clothing		3
5. bag of shoes		<u>1</u>
	Total	14
D. Office Supplies		
1. metal index card files		4
2. key rack and keys		39
3. hole punch		1
4. wooden index card file		1
5. wooden in/out file boxes		4
6. "Kardex" file		1
7. tape dispenser		<u>1</u>
	Total	51
MISCELLANEOUS	GRAND TOTAL	122

OBJECT LOCATION BY ROOM IN THE MAIN BUILDING, KITCHEN AND LAUNDRY  
BUILDING, AND DORMITORY AND BAGGAGE BUILDING, ISLAND ONE

Introduction to Table 4

The following table, Table 4, is a compilation of objects organized by room location and it is followed by maps, provided by the National Park Service, which further illustrate the object distribution. Within each room, objects have been listed in sequence order according to object identification number. Room numbers have been taken from the maps and are used on the inventory cards to designate location.

There have been changes made on the maps by the inventory team. Some of the rooms were incorrectly drawn on the maps, partitions were occasionally included when none actually existed or were omitted when they should have been included. Any changes which were made, have been noted in the margins of the maps, by the inventory group.

The term "numerous" has occasionally been used in the room organization table (Table 4). Numerous represents a rough estimate of more than 100 items. It was used when an exact count could not be taken due to debris blockage, inaccessibility, or both.

Finally, in this table, a full listing of rooms has been given. This includes certain rooms in which there are no objects. An inventory card labelled "Room Report" was written for those rooms during the inventory, and the term is used in Table 4. The original inventory card contains additional information concerning the type of room (elevator, bath, hall, etc.) on the "Room Report."

TABLE 4. OBJECT LOCATION BY ROOM IN THE MAIN BUILDING, KITCHEN  
AND LAUNDRY BUILDING, AND DORMITORY AND BAGGAGE BUILDING  
ISLAND ONE

BASEMENT - MAIN BUILDING

There are no room numbers in the basements; the following locations are general orientations based on North, East, South, West.

North Central Section

Numerous pipes (XI-A-5). Numerous screens, sills, panes, shutters, moldings (XI-D-2).

Northeast Section

1315 saucers (I-A-1 through I-A-50), 642 plates (I-B-1 through I-B-31), 886 bowls (I-C-1 through I-C-29), 35 oval platters (I-C-1 through I-C-15), 1 casserole dish cover (I-E-1), 14 pitchers (II-A-1), 550 cafeteria trays (II-A-2), 12 napkin holders (II-A-3), 46 muffin trays (II-A-4), 35 pieces of silverware (II-A-5), 4 tube pans (II-A-6), 1 basin (II-A-7), 10 soup pots (II-A-8), 3 soup ladles (II-A-10), 25 round and oval trays (II-A-11), 3 frying pans and lid (II-A-12) 2 pots (II-A-13), 20 oven trays (II-A-14), 1 draining box (II-A-15), 7 large food trays (II-A-16), 1 roasting pot cover (II-A-17), 40 large cake pans (II-A-18), 26 pot lids (II-A-19), 8 baking dishes (II-A-20), 55 metal boxes (II-A-21), 6 large metal bowls (II-A-22), 2 meat grinders (II-A-23), 5 crates (II-A-24), 7 long-handled spoons (II-A-25), 1 oval roasting pan and lid (II-A-26), 4 grill trays (II-A-27), 3 small tube pans (II-A-28), 27 square trays (II-A-29), 1 rectangular roasting pan and lid (II-A-30), 1 food scale (II-A-31), 4 colanders (II-A-32), 6 small metal bowls (II-A-33), 38 bread pans (II-A-35), 4 garbage can lids (II-A-36), 1 two-tiered pot (II-A-37), 30 tart cups (II-A-38), 1 mixing machine 'spoon' (III-A-1), 3 light fixtures (IV-A-1), 1 crib frame (V-A-1), 188 headboards (V-A-2), 39 footboards (V-A-3), 206 mattress frames (V-A-4), 51 flat rod frames (V-A-5), 1 wooden headboard/footboard (V-A-12), 4 cabinets (V-C-1 through V-C-4), 1 table (V-D-1) 2 butcher block tables (V-D-3), 1 metal shelving rack (V-E-1), 1 hand truck (VII-A-1), 1 vacuum cleaner (VII-A-2), 2 weighing scales (VII-A-3), 1 electrical wiring box (VII-A-4), 1 buffing machine (VII-A-5), 2 pieces of gardening equipment (VII-A-6 and VII-A-7), 1 lawnmower and base (VII-A-8 and VII-A-11), 1 pump and metal roller (VII-A-9 and VII-A-10), 1 seed spreader (VII-A-12), 1 pick (VII-A-19), 1 doctor's scale (VIII-A-1), 2 dentists's chair (VII-B-1), 1 dentist's drilling machine (VIII-B-3), 1 stokes litter (XIII-B-10), 1 sink (IX-A-1), 2 slicing machines (X-A-1 and X-A-4), 5 coffee machines (X-A-2 and X-A-3), 2 dish carts (X-A-24), 1 sewing machine (X-B-1), 300 roofing tiles (XI-A-1). 200 slate floor tiles (XI-A-2), 1 door (XI-B-1), 1 cash register (XIII-B-9).

TABLE 4 (Cont.)

South Central

125 chairs (V-B-1 through V-B-10), 5 chest of drawers (V-C-5 through V-C-7), 3 tables (V-D-4 and V-D-5), 8 stools (V-E-3), 1 ironing board (V-E-4), 1 bookshelf (V-E-5), 1 desk (V-F-1), numerous pipes (XI-A-5), 54 various architectural elements (XI-C-1, XI-C-2, XI-D-1), numerous screens, sills, panes and moldings (XI-D-2).

Southeast

1 table (V-D-2), 1 platform (V-E-2), 1 mop wringer (VII-A-13), 10 cone-shaped funnels, 2 saw blades (VII-A-15), 1 pick (VII-A-16), 1 shovel (VII-A-17), 1 ladder (VII-A-18), 1 sink (IX-A-2), 1 electric fan (X-B-2), 300 bricks (XI-A-3).

Southwest

1 magazine rack (V-C-10).

FIRST FLOOR - MAIN BUILDING

Room 101

3 chairs (V-B-1, 20, 21), 2 fans (X-B-2), 1 lamp, architectural (XI-D-6).

Hall 101

1 pitcher (II-A-1), 1 muffin tray (II-A-4), 1 frying pan (II-A-12), 1 lamp (IV-A-3), 2 chairs (V-B-12, 19), 12 file cabinets (V-C-11, 27, 30, 38, 55), 1 cabinet locker (V-C-32), 3 tables (V-D-5, 6, 11), 2 desks (V-F-2), 4 benches (V-G-8), 1 fire extinguisher (VII-A-28).

Room 102

1 file cabinet (V-C-11), 1 table (V-D-11), 1 fire extinguisher (VII-A-22), 1 chalkboard (XIII-B-2).

Hall 102

16 chairs (V-B-22), 1 cabinet (V-C-33).

Room 103

1 chest of drawers (V-C-54), 1 file cabinet (V-C-56), 1 desk (V-F-5).

TABLE 4 (Cont.)

Room 104

8 chairs (V-B-1, 4, 5, 7, 11), 2 cabinets (V-C-24, 31),  
1 table (V-D-13), 1 wooden platform (V-E-2), 1 stool (V-E-3),  
1 safe deposit box (V-H-3), 1 cash register (XIII-B-9).

Room 105A

1 lamp (IV-B-1), 4 chairs (V-B-5, 17), 1 file cabinet (V-C-11),  
1 table (V-D-10), 1 coat rack (V-E-9), 3 desks (V-F-2, 3, 4),  
3 fans (X-B-2), 1 sign (XII-A-3), 1 hat (XIII-C-1), 1 index  
card file (XIII-D-1), 1 key rack (and 39 keys) (XIII-D-2).

Room 105B

3 chairs (V-B-4, 7), 1 file cabinet (V-C-27), 1 desk (V-F-7).

Room 106-7

5 chairs (V-B-1, 4, 13, 18), 1 table (V-D-12).

Room 108

2 chairs (V-B-8, 10), 1 file cabinet (V-C-28), 1 cabinet  
(V-C-29), 1 coat rack (V-E-14), 1 desk (V-F-10).

Stairway 08A

1 cup (II-A-33), 1 table (V-D-1), 1 desk (V-F-1), 2 fans  
(X-B-2).

Room 109

1 chair (V-B-7), 1 table (V-D-14), 2 benches (V-G-9).

Hall 109

3 doors (XI-B-7, 8), 2 windows (XI-C-2).

Room 110

2 light fixtures (IV-A-4), 3 chairs (V-B-4, 32), 1 file  
cabinet (V-C-34), 61 lockers (V-C-35, 36), 1 desk (V-F-6),  
1 bench (V-G-9), 1 pair shoes (XIII-C-3).

Room 111

Room Report.

TABLE 4 (Cont.)

Room 112

28 cafeteria trays (II-A-2, 44), 5 pieces food-processing equipment (II-A-9, 52), 3 pots (II-A-13), 2 cake pans (II-A-18), 4 bowls (II-A-22), 1 draining tray (II-A-34), 3 conical strainers (II-A-49), 9 food pans (II-A-49), 4 wisks (II-A-50), 1 pitcher pail (II-A-51), 1 wire basket (II-A-53), 3 chairs (V-B-11, 17), 1 coatrack (V-E-11), 1 desk (V-F-3), 1 grill/stove (X-A-10), 1 dish rack/cart (X-A-12), 2 serving carts (X-A-13, 14), 1 kitchen storage system (X-A-15), 2 draining tables (X-A-16), 1 knife sharpener (X-A-17), 1 fan (X-B-2), 2 coats (XIII-C-2).

Room 113

Room Report.

Room 114A

1 chair (V-B-1), 1 table (V-D-11), 1 coatrack (V-E-9), 1 bookshelf (V-E-10).

Room 114B

3 cabinets (V-C-37).

Room 115

Room Report.

Room 116

Room Report.

Room 117

4 chairs (V-B-22), 4 benches (V-G-5, 6).

Room 118

Room Report.

Room 119

Room Report.

Room 120

Room Report.

Room 121

150 cafeteria trays (II-A-2), 75 light fixtures (IV-A-2, 4, 6), 25 headboards (V-A-2), 13 footboards (V-A-3), 32 mattress frames (V-A-4), 10 chairs (V-B-1, 6, 11, 13), 1 cabinet (V-C-8),

TABLE 4 (Cont.)

Room 121

2 lockers (V-C-9), 4 file cabinets (V-C-11), 5 tables (V-D-6,7,11), 7 desks (V-F-1, 3, 5, 8), 15 benches (V-G-1,2,3,4,5,6), 1 wheelbarrow (VII-A-20), 2 stanchions (VII-A-21), 1 fan (X-B-2), 2 doors (XI-B-5), 38 windows (XI-C-3), 36 architectural elements (XI-D-2), 70 metal gratings (XI-D-3), 1 cash register (XIII-B-9).

Room 122

Room Report.

Room 123

Room Report.

Room 124

Room Report.

Room 125

1 desk (V-F-3).

Room 126

1 chair (V-B-8), 1 cabinet (V-C-12), 1 desk (V-F-9).

Room 127

Room Report.

Room 128

192 lockers (V-C-26), 6 hand trucks (VII-A-1), 1 fire extinguisher (VII-A-22), 5 dollies (VII-A-25), 12 screens (XI-D-2), 3 suitcases (XIII-A-1), 1 basket (XIII-A-2), 4 trunks (XIII-A-3), 1 barrel (XIII-B-1), 2 hats (XIII-C-1).

Room 128A

1 rotary disc (III-A-4), 1 table (V-D-15), 2 vats (X-A-7).

Room 129

Room Report.

Room 130

Room Report.

Room 131

Room Report.



TABLE 4 (Cont.)

Room 132

1 stand-up lamp (IV-C-1), 1 chair (V-B-14), 1 cabinet (V-C-8),  
2 trash cans (VII-A-24, 29), 2 fans (X-B-2), 1 window screen  
(XI-D-2).

Room 133

Room Report.

Room 134

3 chairs (V-B-15, 8, 5), 3 cabinets (V-C-18, 19, 24), 2 tables  
(V-D-9, 10), 1 desk (V-F-2), 3 safe deposit vaults (V-H-1, 2),  
3 architectural elements (XI-D-3).

Room 135

2 chairs (V-B-5, 12).

Room 136

Room Report.

Room 137

Room Report.

Room 138

Room Report.

Room 139

1 chair (V-B-12), 2 benches (V-G-7).

Room 140

2 benches (V-G-5, 6).

Room 141

1 light fixture (IV-A-5), 1 chair (V-B-1), 1 desk (V-F-3),  
1 sewing machine stand (X-B-3), 2 signs (XII-A-1, 2).

Room 142

Room Report.

TABLE 4 (Cont.)

Room 143, 144

1 crib frame (V-A-1), 3 chairs (V-B-1, 5), 1 filing cabinet (V-C-11), 5 cabinets (V-C-21), 1 metal locker (V-C-22), 1 chest of drawers (V-C-23), 2 tables (V-D-6, 8), 3 metal shelving racks (V-E-1), 2 stools (V-E-3), 1 desk (V-F-1), 1 trunk (XIII-A-3).

Room 144

Room Report.

Room 145

1 light fixture (IV-A-4)

Room 146

2 chairs (V-B-1, 32), 3 night stands (V-C-8), 1 stool (V-E-3), 1 fan (X-B-2), 2 doors (XI-B-6).

Room 147

Room Report.

Room 148

Room Report.

Room 149

Room Report.

Room 150

Room Report.

Room 151

Room Report.

Room 152

Room Report.

Room 153

1 chair (V-B-7).

Room 154

12 chairs (V-B-4, 5, 7, 14, 16), 20 night tables (V-C-8), 1 large wood cabinet (V-C-20), 1 set of metal lockers (V-C-25),

TABLE 4 (Cont.)

Room 154

2 tables (V-D-11), 1 couch (V-E-8), 3 desks (V-F-3), 1 hospital bed table (VII-A-3), 1 x-ray light box (VIII-A-4), 1 bin (VIII-A-6), 2 trash cans (VII-A-24), 2 oxygen tanks (VIII-A-2), 1 hospital pail (VIII-A-5), 1 dentist chair frame (VIII-B-2), 3 fans (X-B-2).

Room 155

7 cabinets (V-C-14, 15, 16, 17), 2 wardrobes (V-C-52), 2 wood desks (V-F-3, 13), 2 metal desks (V-F-14, 15), 6 architectural elements (XI-C-2, XI-D-2), 2 trunks (XIII-A-4).

Room 156

1 chest of drawers (V-C-13), 2 benches (V-G-6), 1 fire extinguisher (VII-A-22), 1 "markaline" for demarcating baseball field (VII-A-23), 29 architectural elements (XI-D-2).

Room 157

Room Report.

Room 158

1 fan (X-B-2).

Room 159

Room Report.

Room 160

1 night stand (V-C-8).

SECOND FLOOR - MAIN BUILDING

Room 201

2 chairs (V-B-1 and V-B-11), 2 tables (V-D-14), 11 architectural elements (XI-D-2),

Room 202

1 chair (V-B-12), 1 electric fan (X-B-2).

Hall 202

1 sign (XII-A-4),

Room 203

Room Report.

TABLE 4 (Cont.)

Room 204

2 hanging light fixtures (IV-A-4), 5 chairs (V-B-1 and 2, V-B-11, V-B-24), 1 table (V-D-10), 3 desks (V-F-2 and V-F-11), 1 fan (X-B-2).

Hall 204

1 stanchion (VII-A-21), 7 architectural elements (XI-B-2, XI-D-5).

Room 205

2 chairs (V-B-4 and V-B-25), 1 bench (V-G-14).

Hall 205

3 chairs (V-B-12), 1 night stand (V-C-8), 1 fan (X-B-2), 2 doors (XI-B-4), 4 windows (XI-D-2).

Room 206

1 nightstand (V-D-19), 1 desk (V-F-3), numerous architectural elements (XI-D-2).

Room 207

1 lamp (IV-B-2), 4 chairs (V-B-2, 5 and 11), 2 lockers (V-C-25), 1 file cabinet (V-C-38), 1 table (V-D-14), 3 fans (X-B-2).

Room 208

1 light fixture (IV-A-4), 1 table (V-D-10), 2 desks (V-F-3 and 12).

Room 209

Room Report.

Room 210

Room Report.

Room 211

2 light fixtures (IV-A-4).

Room 212

1 light fixture (IV-A-4), 3 windows (XI-D-2).

Room 213

1 light fixture (IV-A-4), 9 chairs (V-B-2 and 12), 3 filing cabinets (V-C-11, 30 and 40), 1 table (V-D-17), 3 wastebaskets (VII-A-26).

Room 214

Room Report.

Room 215

1 desk (V-F-3), 4 file boxes (XII-D-5).

Room 215A

3 chairs (V-B-2, 5, and 16), 1 cabinet (V-C-45), 1 index card file (XIII-D-1), 1 index card file box (XIII-D-4).

Room 216

1 chair (V-B-5), 1 locker (V-C-26), 1 nightstand (V-D-11).

Room 217

1 cabinet (V-C-44).

Room 218

1 nightstand (V-D-11).

Room 219

2 light fixtures (IV-A-4), 1 chair (V-B-15), 1 desk (V-F-3), 1 water fountain (IX-A-3).

Room 220A

1 door (XI-B-9).

Room 220B

1 light fixture (IV-A-4), 1 chair (V-B-12), 1 file cabinet (V-C-38), 1 desk (V-F-10), 1 trash can (VII-A-24).

Room 221

2 chairs (V-B-5 and 12), 1 desk (V-F-9).

\*\*

Room 223

1 light fixture (IV-A-4), 5 file cabinets (V-C-11, and 30), 1 table (V-D-10), 1 piano (XIII-B-5).

\*\* Gaps between numbers indicate no room was assigned to the missing number. Example: 221 \*\* 223, there is no room "222".

TABLE 4 (Cont.)

Room 224

6 chairs (V-B-1, 4, and 11), 13 lockers (V-C-9, 25, 32),  
2 tables (V-D-5 and 14).

Room 225

1 file cabinet (V-C-11).

Room 226

2 tables (V-D-11 and 20).

Room 227

2 file cabinets (V-C-30), 2 tables (V-D-14 and 21), 1 safe  
(V-H-4).

Room 228

2 lockers (V-C-25).

Room 229

2 chairs (V-B-2 and 5).

\*\*

Room 231

49 glass tiles (XI-A-4), 7 chairs (V-B-12 and 22), 3 benches  
(V-G-1, 7, 12 and 13), 1 stancheon (VII-A-21).

Room 232

1 locker (V-C-22), 1 cabinet (V-C-32), 2 tables (V-D-11),  
1 mop wringer and pail (VII-A-12), 1 fan (X-B-2).

Room 233

1 chair (V-B-5), 1 night stand (V-C-8), 11 gratings (XI-D-3),  
1 hole punch (XIII-D-3).

Room 234

2 mattresses (V-A-9), 1 table (V-D-11), 1 bench (V-G-1).

Room 235

34 mattress frames (V-A-4), 25 pillows (V-A-8), 14 mattresses  
(V-A-9), 70 headboard/footboards (V-A-11).

10/15/82

TABLE 4 (Cont.)

Room 236

3 pillows (V-A-8), 1 mattress (V-A-9), 1 chair (V-B-1),  
1 cabinet (V-C-43), 1 shelving rack (V-E-1), 1 bag of  
clothing (XIII-C-4).

Room 237

Room Report.

Room 238

Room Report.

Room 239

1 cabinet (V-C-42), 13 benches (V-G-1).

Room 240

1 chair (V-B-5).

Room 241

3 light fixtures (IV-A-4), 2 chairs (V-B-6 and 12), 4 file  
cabinets (V-C-11, 30, 38 and 39), 1 desk (V-F-9), 1 fire  
extinguisher (VII-A-28), 1 fan (X-B-2).

Room 242

1 table (V-D-6).

Room 243

Room Report.

Room 244

1 light fixture (IV-A-4), 8 mattresses (V-A-9), 1 chair  
(V-B-2), 13 file cabinets (V-C-11 and 40), 1 table (V-D-27),  
1 desk (V-F-4), 1 fan (X-B-2), 2 bags of clothing (XIII-C-4),  
1 bag of shoes (XIII-C-5).

Room 245

2 light fixtures (IV-A-4), 18 chairs (V-B-2, 12, 22 and 23),  
2 file cabinets (V-C-38 and 40), 1 stool (V-E-3), 1 door  
(XI-B-2), 5 architectural elements (XI-D-2).

TABLE 4 (Cont.)

Room 246

1 chair (V-B-11), 2 file cabinets (V-C-38 and 40), 1 fire extinguisher (VII-A-22), 1 fan (X-B-2), 6 architectural elements (XI-D-2).

Room 247

2 light fixtures (IV-A-4), 4 file cabinets (V-C-11 and 38), 1 desk (V-F-3), numerous architectural elements (XI-D-2).

Room 248

1 electric fan (X-B-2), 4 architectural elements (XI-D-2).

\*\*

Room 250

2 assembled bed frames (V-A-7), 1 folding screen frame (VIII-A-7).

Room 251

1 light fixture, 5 chairs (V-B-4, 5 and 12), 1 closet (V-C-33), 3 lockers (V-C-36), 1 cabinet (V-C-43), 1 nightstand (V-D-11), 1 table (V-D-14), 1 coatrack (V-E-12), 1 trash container (VII-A-24).

Room 252

1 table (V-D-10), 1 fan (X-B-2), 50 architectural elements (XI-D-2).

Room 253

1 fan (X-B-2), 15 windows (XI-C-3), 1 fuse box door (XI-D-4).

Room 254

2 file cabinets (V-C-11 and 38).

Room 254A

12 architectural elements (XI-D-2).

Room 255

2 chairs (V-B-12), 1 table (V-D-16).

Room 256

2 file cabinets (V-C-11 and 38).



TABLE 4 (Cont.)

Room 257

5 light fixtures (IV-A-4), 3 fans (X-B-2), 4 architectural elements (XI-D-2).

Room 258

3 chairs (V-B-12 and 32), 1 file cabinet (V-C-39), 2 night stands (V-D-11), 3 tables (V-D-14 and 27), 1 fan (X-B-2), numerous architectural elements (XI-D-2), 1 pair of men's work shoes (XIII-C-3), 1 index card file drawer (XIII-D-1).

Room 259

1 cabinet (V-C-41), 1 door (XI-B-3).

Room 260

Room Report.

Room 261

1 light fixture (IV-A-4), 2 ladders (VII-A-18), 1 fan (X-B-2).

Room 262

1 light fixture (IV-A-4), 1 chair (V-B-5), 2 architectural elements (XI-D-2).

THIRD FLOOR - MAIN BUILDING

Room 301

1 chair (V-B-2).

Room 302

Room Report.

Hall 301

4 lockers (V-C-48).

Room 303

2 headboards (V-A-2), 105 mattress frames (V-A-4), 1 assembled bed frame (V-A-7), 201 head and footboards (V-A-11), 10 chairs (V-B-1, 2, 11, 12, 26 and 27), 2 tables (V-D-9 and 11), 1 metal rack (V-E-1), 1 window fan (X-B-4), 9 windows (XI-C-3), 2 stacks window frames and panes (XI-D-2), 5 curved and flat windows (XI-D-3).

10/15/82

TABLE 4 (Cont.)

Hall 303

1 chair (V-B-11).

Room 304

Room Report.

Room 305

Room Report.

Room 306

Room Report.

Room 307

1 pitcher (II-A-1), 1 cake pan (II-A-18), 4 assembled bed frames (V-A-7), 4 chairs (V-B-1, 2, 7, 12), 3 wood cabinets (V-C-15, 46 and 47), 8 tables (V-D-11, 14, 17, 18, 22 and 28), 3 metal racks (V-E-1), 2 desks (V-F-16), 1 bench (V-G-15), 10 books (VI-A-1), 20 periodicals (VI-B-1), 50 blank forms (VI-C-1), 3 bags of filled-in forms (VI-D-1), 50 maps (VI-E-1), 5 handwritten items (VI-F-1), 10 miscellaneous documents (VI-G-1), 150 mimeographed government documents (VI-H-1), 1 fan (X-B-2), 2 metal window gratings (XI-D-3), 1 towel container (XIII-B-6), 1 mirror (XIII-B-7), 2 miniature looms (XIII-B-11), 1 radio (XIII-B-12), 1 checkerboard (XIII-B-13), 6 bottles and jars (XIII-B-14), 1 ceramic container (XIII-B-15), 1 decorative spindle (XIII-B-16), 1 'Kardex' file (XIII-D-6).

Room 308

1 lamp (IV-B-2), 4 chairs (V-B-4, 5), 4 cabinets (V-C-8, 50, 51) 2 tables (V-D-1, 11) 1 wastecan (VII-A-27), 1 wheelchair (VIII-A-8), 12 crutches (VIII-A-9), 1 bedpan (VIII-A-10), 4 assorted hospital pans and bowls (VIII-A-11), 10 bottles (XIII-B-4).

Hall 308

1 light fixture (IV-A-6), 1 metal rack (V-E-1).

Room 309

1 assembled bed frame (V-A-7), 1 chair (V-B-5).

Room 310

1 chair (V-B-11).

TABLE 4 (Cont.)

Hall 310

Room Report.

Room 311

5 assembled bed frames (V-A-7).

Room 312

1 assembled bed frame (V-A-7), 1 chair (V-B-5).

Room 313

1 chair (V-B-28), 2 (1 set) metal lockers (V-C-48).

Room 314

1 chair (V-B-2), 45 moldings (XI-D-2).

Hall 314

1 chair (V-B-5).

Room 315

1 assembled bed frame (V-A-7), 2 head and footboards (V-A-11).

Room 316

Room Report.

Room 317

Room Report.

Hall 317

1 chest of drawers (V-C-5).

Room 318

Room Report.

Room 319

Room Report.

\*\*

Room 321

3 chairs (V-B-1, 2, 5), 1 ironing board (V-E-7), 1 coatrack (V-E-14), 2 sewing machines (X-B-1), 2 metal sewing machine

TABLE 4 (Cont.)

Room 321

stands (X-B-3), 2 sewing machine tables (X-B-5), metal stand and laundry appliance (X-B-6), 3 pairs shoes (XIII-C-3).

Room 322

3 headboards (V-A-2), 7 mattress frames (V-A-4), 14 crib frames (V-A-10), 25 head and footboards (V-A-11), 1 cabinet (V-C-49), 1 stool (V-E-3), 1 ironing board (V-E-6), 1 wood platform (V-E-13), 3 folding screen frames (VIII-A-7).

Room 323

1 chair (V-B-2), 1 metal grating (XI-D-3).

Room 324

Room Report.

Room 324 A-D

Room Report.

Room 325

Room Report.

Room 326

1 chair (V-B-2).

Room 327

1 cabinet (V-C-15), 1 crib frame (V-A-1), 2 assembled bed frames (V-A-7), 1 head and footboard (V-A-11), 3 chairs (V-B-1, 29), 1 chest of drawers (V-C-5), 1 table (V-D-11).

Room 328

1 crib frame (V-A-1), 2 unassembled bed frames (V-A-1), 3 chairs (V-B-29, 1), 1 table (V-D-11), 1 headboard (V-A-11).

Room 329

1 chair (V-B-1), 1 cabinet (V-C-15).

Room 330

2 chairs (V-B-5).

Room 331

1 cabinet (V-C-15).

TABLE 4 (Cont.)

Room 332

2 chairs (V-B-5, 11).

Room 333

1 cabinet (V-C-15).

Room 334

2 cabinets (V-C-5, 15).

Room 335

1 cabinet (V-C-15), 1 ladder (VII-A-18).

Room 336

1 chest of drawers (V-C-5), 1 cabinet (V-C-15), 1 fire extinguisher (VII-A-28).

Room 337

1 cabinet (V-C-15).

Room 338 and 338A

Room Report.

Room 339

1 coat rack (V-E-12).

Room 340 and 341

Room Report.

Room 342

1 chair (V-B-5).

Room 343

Room Report.

Room 344

1 chair (V-B-5), 3 mirrors (XIII-B-8).

Room 345

Room Report.

10/15/82

TABLE 4 (Cont.)

Room 346

Room Report.

\*\*

Room 348

Room Report.

Room 349

Room Report.

Room 350

1 cabinet (V-C-53), 1 table (V-D-27), 2 light fixtures (IV-A-4).

Room 351

2 tables (V-D-24, 26).

Room 352

1 cabinet (V-C-15), 1 table (V-D-23).

Room 352A

Room Report.

Room 353

Room Report.

Room 354

Room Report.

Room 355

Room Report.

Room 356

1 crib frame (V-A-10), 1 cabinet (V-C-52).

Room 357

18 mattress frames (V-A-4), 1 crib (V-A-6), 10 unassembled crib frames (V-A-10), 1 cabinet (V-C-15), 1 desk (V-F-9), 1 bench (V-6-16), 1 fire extinguisher (VII-A-28).

TABLE 4 (Cont.)

Room 358

Room Report.

Room 359

1 light fixture (IV-A-6), 1 cabinet (V-C-52), 1 desk (V-F-7).

Room 360

1 cabinet (V-C-52).

Room 361

1 cabinet (V-C-52), 1 table (V-D-29).

Room 362

1 chair (V-B-2).

Room 363

Room Report.

Room 364

Room Report.

Room 365

1 cabinet (V-C-52).

Room 366

1 cabinet (V-C-15), 1 light fixture (IV-A-4).

Room 367

4 chairs (V-B-1, 5, 27), 1 cabinet (V-C-15).

Room 368

1 chair (V-B-2), 1 cabinet (V-C-15).

Room 369

1 light fixture (IV-A-6), 1 chair (V-B-2).

Room 370

1 chair (V-B-31), 1 cabinet (V-C-52).

TABLE 4 (Cont.)

Room 371

1 chair (V-B-27), 1 cabinet (V-C-15).

Room 372

1 chair (V-B-30), 1 cabinet (V-C-15), 1 light fixture (IV-A-4).

Room 373

1 cabinet (V-C-52), 1 table (V-D-9).

Room 374

1 cabinet (V-C-15).

Room 375

1 cabinet (V-C-15).

Room 376

1 cabinet (V-C-15).

Room 377

1 cabinet (V-C-15), 1 table (V-D-25).

Room 378

1 cabinet (V-C-15).

Room 379

1 cabinet (V-C-15).

Room 380

Room Report.

Room 381

1 chair (V-B-30), 1 cabinet (V-C-15).



TABLE 4 (Cont.)

KITCHEN AND LAUNDRY BUILDING

FIRST FLOOR

Room KL 100

1 table (V-D-30).

Room KL 101

1 oven tray (II-A-14), 1 light fixture (IV-A-6), 27 chairs (V-B-10, 12), 3 cabinets (V-C-57, 58, 59), 2 tables (V-D-6, 11), 2 metal shelving racks (V-E-1), 1 coat rack (V-E-15), 3 doors (XI-B-10, 11).

Room KL 102

1 chair (V-B-1).

Room KL 103

Room Report.

Room KL 104

1 metal display case (XIII-B-18), 1 metal can (XIII-B-19).

Room KL 105

1 cabinet (V-C-60).

Room KL 106

1 oven tray (II-A-14), 1 wisk (II-A-50), 1 table (V-D-6), 1 coffee machine (X-A-2), 3 vats (X-A-7), 1 cafeteria serving stand (X-A-8), 1 grill and lid (X-A-9), 1 ice cream freezer (X-A-18), 1 freezing unit (X-A-19), 1 refrigerator freezer (X-A-20), 1 oven/stove (X-A-21), 2 dishwashers (X-A-22), 1 cafeteria serving cabinet (X-A-23), 2 fans (X-B-2).

Room KL 107

3 dollies (VII-A-25).

Room KL 108

Room Report.

Room KL 109

Room Report.

Room KL 110

Room Report.

TABLE 4 (Cont.)

Room KL 111

1 chair (V-B-5), 2 cabinets (V-C-55, 61), 2 desks (V-F-3, 5),  
1 fan (X-B-2), 1 sign (XII-A-5).

Room KL H112

1 metal rack (XIII-B-20).

Room KL 113

1 laundry pressing table (III-A-11), 1 drying machine (III-A-14),  
1 ironing machine (III-A-15), 2 washing machines (III-A-16),  
1 pipe vise (VII-A-30), 1 iron (X-B-7).

Room KL 114

Room Report.

Room KL 115

Room Report.

Room KL 116

1 laundry pressing machine (III-A-5), 1 drying machine (III-A-6),  
1 laundry pressing machine (III-A-7), 1 steamer (III-A-7), 1  
laundry pressing table (III-A-9), 2 laundry drying machines  
(III-A-10), 1 laundry pressing table (III-A-11), 1 laundry basket  
(III-A-12), 2 presser machines (III-A-13), 1 hand truck (VII-A-1).

Room KL 117

1 table (V-D-9), 1 sign (XII-A-6).

Room KL 118

Room Report.

Room KL 119

1 light fixture (IV-A-6), 2 cabinets (V-C-38, 56), 1 table (V-D-9),  
1 fan (X-B-2), 5 keys, 1 padlock (XIII-B-21).

Room KL 120

1 cabinet (V-C-62).

Room KL 121

1 cabinet (V-C-63), 1 desk (V-F-17), 1 fan (X-B-2), 1 index card  
file (XIII-D-1), 1 tape dispenser.

10/15/82

TABLE 4 (Cont.)

Room KL 122

Room Report.

Room KL 123

Room Report.

TABLE 4 (Cont.)

DORMITORY AND BAGGAGE BUILDING

South Central, First Floor

This is one large room; there are no area divisions.

Kitchen

24 saucers (I-A-13, 18, 24, 31), 22 plates (I-B-3, 5, 10, 11, 17, 20, 21), 57 bowls (I-C-14, 20, 21, 22), 1 butter dish (I-D-1), 4 glasses (I-E-2), 2 pitchers (II-A-1), 43 cafeteria trays (II-A-2), 5 muffin trays (II-A-4), 113 silverware (II-A-5), 2 soup pots (II-A-8), 1 food processing equipment (II-A-9), 3 soup ladles (II-A-10), 2 pots (II-A-13), 1 drain box (II-A-15), 7 large cake pans (II-A-18), 4 pot covers (II-A-19), 2 large metal bowls (II-A-22), 1 metal colander (II-A-32), 2 metal strainers (II-A-39), 1 metal strainer (II-A-40), salt and pepper shakers (II-A-41), 1 circular strainer (II-A-42), 15 pie tins (II-A-43), 5 flat cafeteria trays (II-A-44), 1 teapot (II-A-45), 1 tea tin (II-A-46), 1 glass bottle (jug) (II-A-47), 2 deep fry, metal baskets (II-A-53), 2 hooked-end rod part (III-A-2), 1 spindle wire machine part (III-A-3), 9 chairs (V-B-1, 4, 11), 10 tables (V-D-6, 11, 15), 2 benches (V-G-10, 11), 2 cans (XIII-B-3, 4), 1 coat (XIII-C-2), 1 coffee machine (X-A-2), 2 pizza ovens (X-A-5), 2 stoves (X-A-6), 3 vats (X-A-7), 2 cafeteria hot dish (X-A-8), 1 grill and grease lid (X-A-9), grill stove (X-A-10), grinding machine (X-A-11).

10/15/82

OBJECTS OF POSSIBLE HISTORIC SIGNIFICANCE

Introduction to Table 5

This last section includes objects adjudged of possible historical importance. These are objects thought to be from Ellis Island's earliest immigration period, between the years 1900-1920. Other objects of this period may have been missed.

It appears that relatively few of the artifacts inventoried in the Main Building date to this early period. Other periods may be of equal historical importance and should be protected. Smaller unusual objects and larger valuable pieces are now in danger from the elements, and all these pieces should be moved to safe storage areas after they have all been inventoried and tagged.

The following criteria were used to designate artifacts as being of possible historic importance and worthy of special attention. Those objects with unique or special qualities, made of expensive materials, and exhibiting unusual construction techniques are identified here. These include carved and turned furniture of mahogany and solid oak, thin walled and painted ceramics. Another group of objects tentatively identified are historic documents, such as vintage photos, catalogs, books, and periodicals. Artifacts with distinguishing marks, patent numbers, insignias and dates, are also of historic interest, and of use in eventual museum interpretation.

TABLE 5. OBJECTS OF POSSIBLE HISTORIC SIGNIFICANCE

I. TABLEWARE	AMOUNT
A. Saucers	
9. Desert Ware	1
12. Greenwood China Co.	12
25. "U.S. Army Medical Dept."	6
26. "U.S. Army Medical Dept."	17
29. Edwin M. Knowles China Co.	1
30. Trenle China	9
37. John Maddock & Sons	1
38. Pittsburgh Athletic Association MCM VIII	1
39. Scammells, Ellis Island	1
40. James M. Shaw	1
41. "U.S. Army Medical Dept."	1
42. Cook China Co.	1
44. Buffalo China 1918	1
47. Crescent Pottery	1
48. Mayer China	1
49. Camberti China	1
50. Mercer Hotel Ware	1
B. Plates	
2. Buffalo China 1928	1
22. Jackson China 1927	1
23. Fraureuth	3
24. Saxon China	1
25. Mercer Hotel Ware	1
26. Royal Ironstone China	1
27. Homer Laughlin	1
28. Brauscher	1
29. Homer Laughlin	1
C. Bowls	
25. Buffalo China	1
27. Buffalo China USSB	1
D. Platters	
8. Fraureuth	1
14. Willets Vitreous	1
E. Miscellaneous Dish Type	
1. U.S. Immigration Service	1
V. FURNITURE	
A. Beds	
1. Crib	3

10/15/82

TABLE 5 (Cont.)

AMOUNT

B. Chairs		
1.	Bentwood Chair possible cane seat	37
2.	Bent metal chair	54
4.	Windsor chairs some earlier	47
7.	Windsor Captains Chair turned legs possibly earlier	16
9.	Unusual bent metal chair large flairing arms	4
16.	Unusual bent metal chair	2
23.	Bent back Windsor with turned spindles and legs	3
32.	Captains Chair with turned legs and stretchers	3
C. Cabinets		
5.	Chest of drawers	6
6.	Chest of drawers with mahogany veneer	1
8.	Night table or instrument table	29
14.	Book case with glass doors	3
16.	All wood supply cabinet	1
17.	Cabinet with glass doors	1
29.	Carved mahogany cabinet	1
32.	All wood locker	3
43.	Stained oak cabinet	2
44.	Renaissance Revival wash stand, mahogany probably had marble top	1
47.	All wood cabinet with map drawer	1
61.	Unusual cabinet with roll top	2
D. Tables		
7.	Solid oak table with massive turned legs	1
F. Desks		
2.	Desk with folding drawers	6
7.	Woven wicker desk	2
G. Benches		
1.	Wooden bench Mission style	52
3.	Cast iron legs and back	1
12.	Wooden bench with slat back	1
H. Safes		
4.	Closet safe, built-in Diebold Safe & Lock Co.	1

10/15/82

TABLE 5 (Cont.)

AMOUNT

VIII. MEDICAL EQUIPMENT

- A. Miscellaneous
  - 8. Wheel chair

1

X. APPLIANCES

- A. Kitchen
  - 19. Wooden cabinet refrigerator

1

- B. Miscellaneous
  - 1. Sewing machines
  - 3. Cast iron sewing machine stand

2

1

XIII. MISCELLANEOUS

- A. Baggage
  - 1. Suitcase
  - 3. Trunks, some canvas with dome top

3

5

- B. Miscellaneous
  - 5. Piano, carved
  - 7. Mirror carved or pressed
  - 11. Looms, carved type WPA and D.A.R.

1

1

2



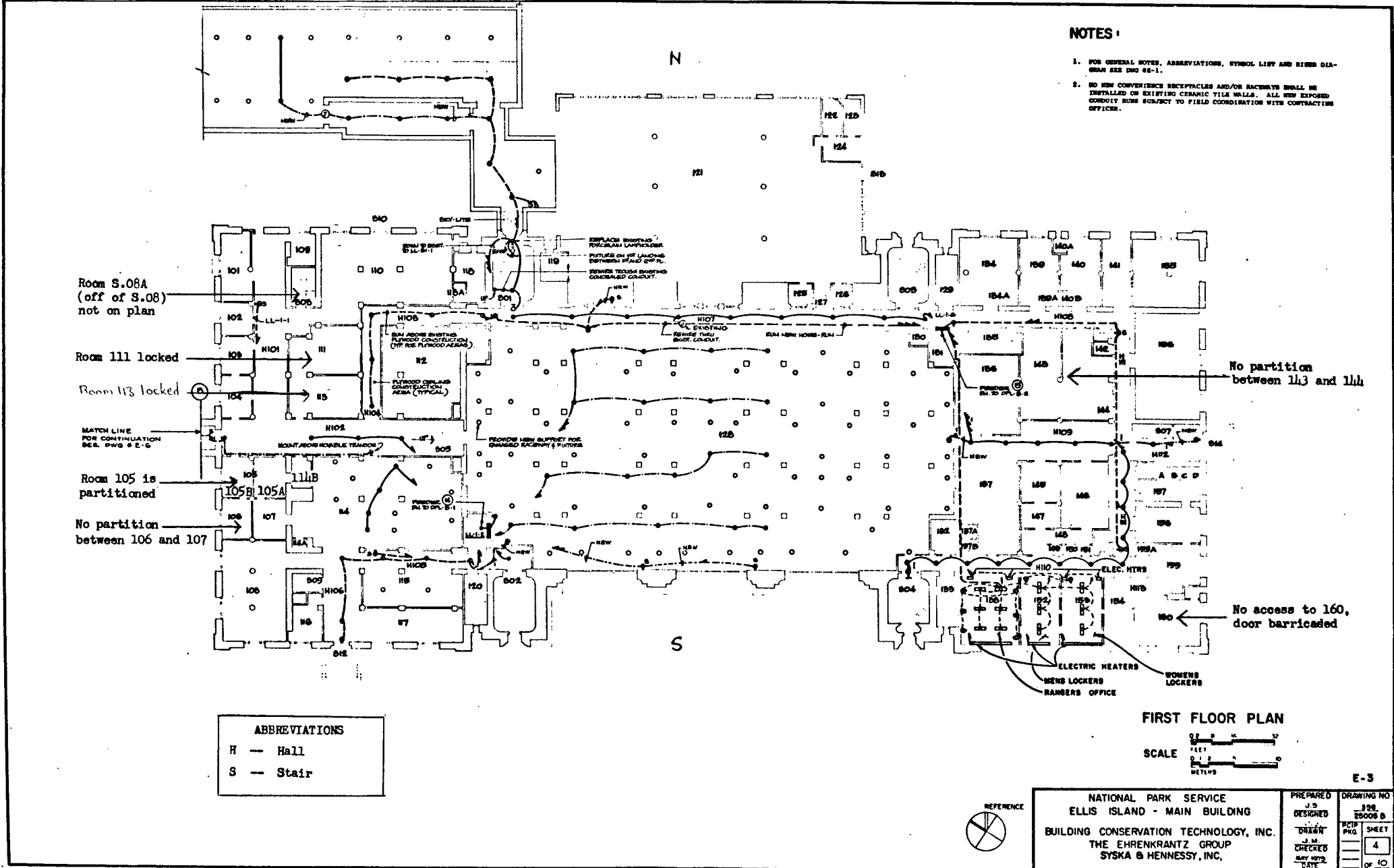
10/15/82

FUTURE SUGGESTIONS

Recommendations for the preservation and security of all the objects included in this report are as follows:

1. Object selection for the collection and future inventories should be conducted as soon as possible.
2. Objects should not be moved from one room location to another at this time. Where possible, contractors working at the island should return objects that have to be moved to the original locations, indicated in this report.
3. Objects on display should be secured and set far enough away from visitor groups to avoid pilfering. For example, a pair of baby shoes on temporary display and inventoried early in the project, disappeared from exhibition a short time later.
4. Objects should be indelibly marked. The ink on tags used in a cursory inventory conducted two years prior to this project has almost completely disappeared. This occurred rapidly in areas of the building where there was excessive humidity or strong sunlight.
5. The maintenance staff on Ellis Island should be oriented to the proposed museum, which is the purpose of this project, and to the importance of the objects for museum interpretation. They were genuinely interested and helpful in carrying out the inventory, and would respond to further training and information on the need for preservation.

FIGURE 2.



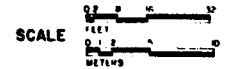
NOTES:

- FOR GENERAL NOTES, ABBREVIATIONS, SYMBOL LIST AND RISER DIAGRAM SEE DWG # E-1.
- NO NEW CONVENIENCE RECEPTACLES AND/OR SCHEDULES SHALL BE INSTALLED ON EXISTING CERAMIC TILE WALLS. ALL NEW EXPOSED CONDUIT RUNS SUBJECT TO FIELD COORDINATION WITH CONTRACTING OFFICE.

ABBREVIATIONS

H	— Hall
S	— Stair

FIRST FLOOR PLAN

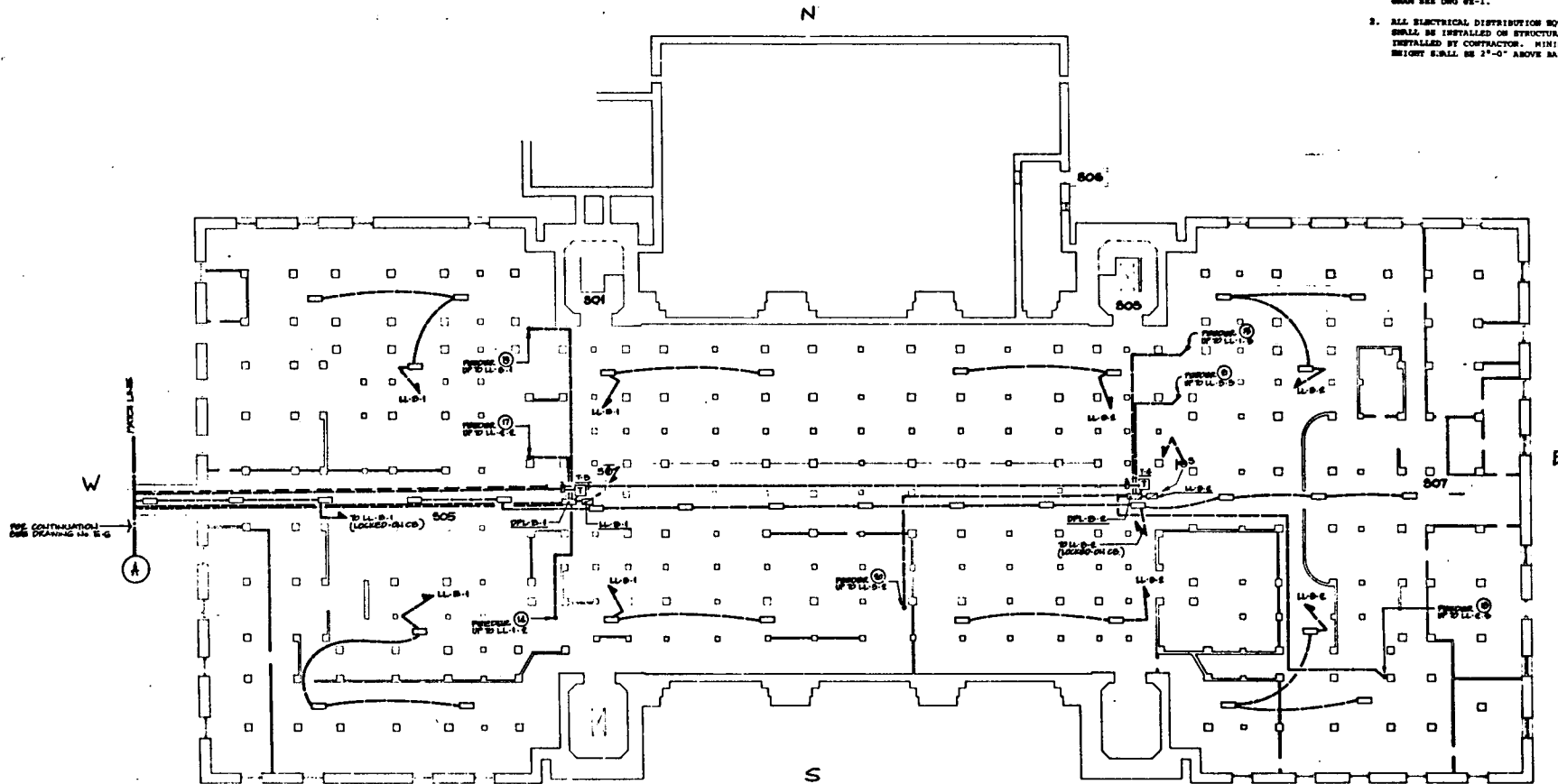


NATIONAL PARK SERVICE ELLIS ISLAND - MAIN BUILDING BUILDING CONSERVATION TECHNOLOGY, INC. THE EHRENKRANTZ GROUP SYSKA & HENNESSY, INC.	PREPARED	J.S.	DRAWING NO.	308
	DESIGNED	J.S.	PROJECT	20006 B
	DRAWN	J.M.	SHEET	4
	CHECKED	J.M.	DATE	MAY 1975

FIGURE 1.

**NOTES**

1. FOR GENERAL NOTES, ABBREVIATIONS, SYMBOL LIST AND RISES DIAGRAM SEE DWG 02-1.
2. ALL ELECTRICAL DISTRIBUTION EQUIPMENT SHOWN ON THIS DWG SHALL BE INSTALLED ON STRUCTURAL SUPPORT PROVIDED AND INSTALLED BY CONTRACTOR. MINIMUM EQUIPMENT MOUNTING HEIGHT SHALL BE 2'-0" ABOVE BASEMENT FLOOR.



**BASEMENT PLAN**



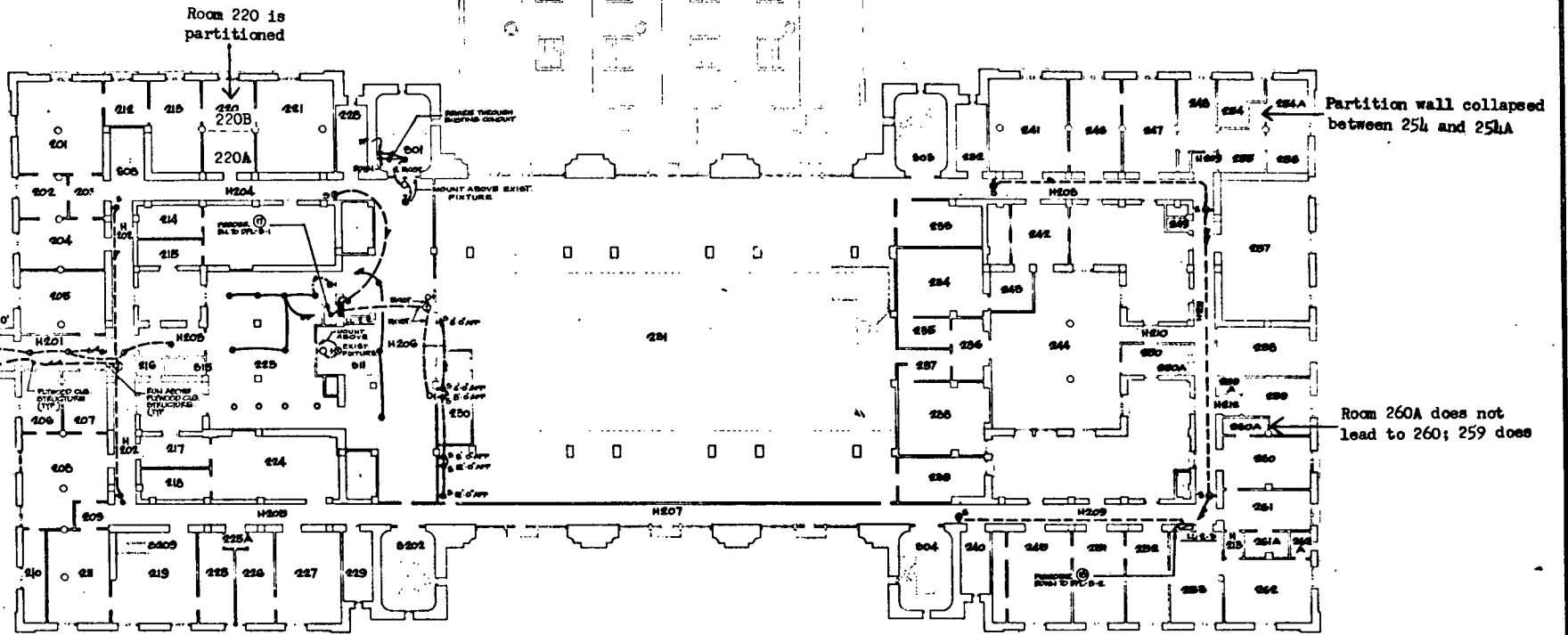
E-2



NATIONAL PARK SERVICE ELLIS ISLAND - MAIN BUILDING BUILDING CONSERVATION TECHNOLOGY, INC. THE EHRENKRANTZ GROUP SYSKA & HENNESSY, INC.		PREPARED J.S. DESIGNED J.S. DRAWN J.M. CHECKED MAY 1979 DATE	DRAWING NO. 358 25006 B PCIP PKG SHEET 3 OF 10
--	--	--	---

**NOTES:**

1. FOR GENERAL NOTES, ABBREVIATIONS, SYMBOL LIST AND RISES DIAGRAM SEE DRG 02-1.
2. NO NEW CONVENIENCE RECEPTACLES AND/OR RACKWAYS SHALL BE INSTALLED ON EXISTING CERAMIC TILE WALLS. ALL NEW EXPOSED CONDUIT RUNS SUBJECT TO FIELD COORDINATION WITH CONTRACTING OFFICE.



**SECOND FLOOR PLAN**

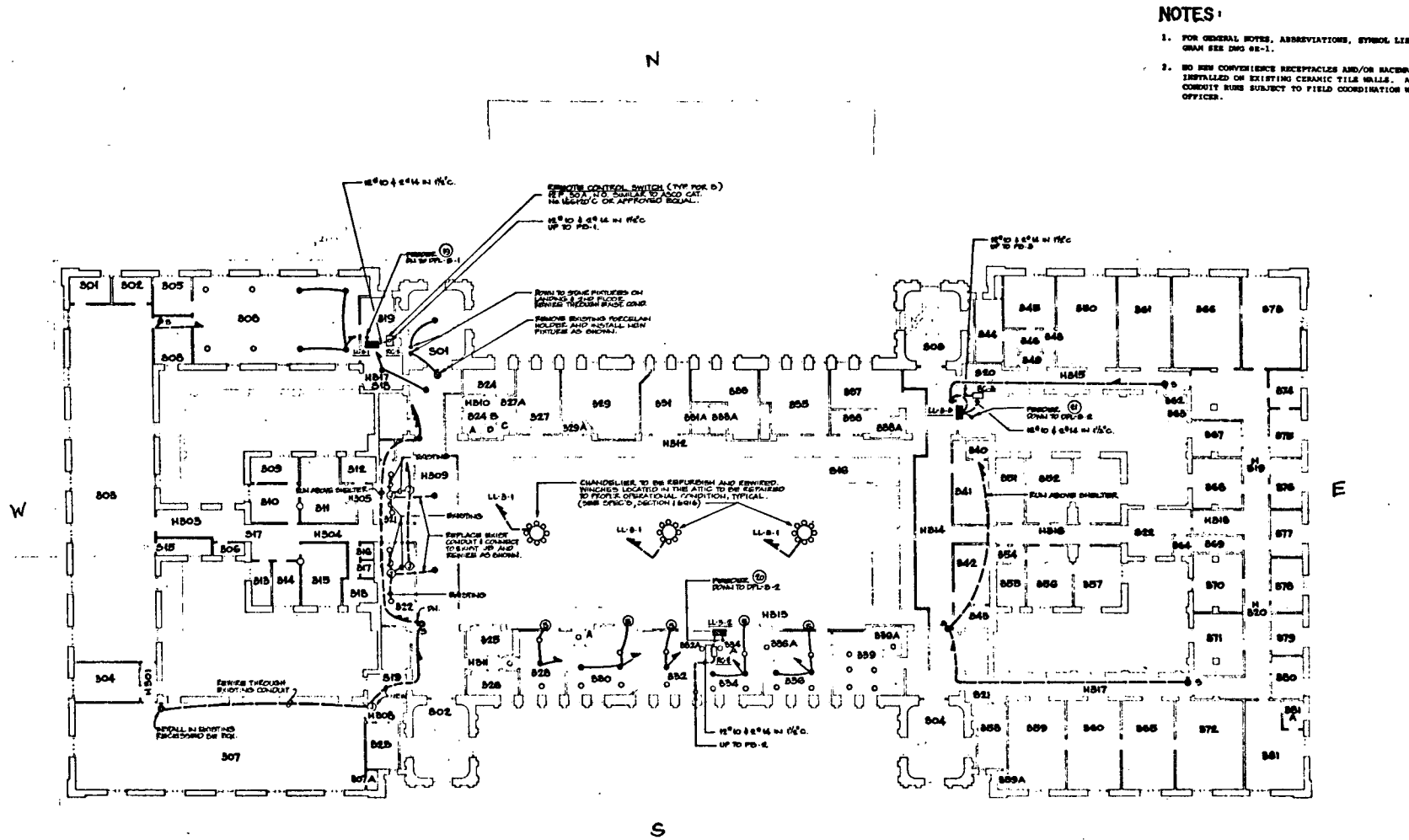


E-4



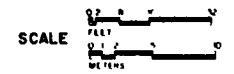
REFERENCE	NATIONAL PARK SERVICE ELLIS ISLAND - MAIN BUILDING		PREPARED J. O.	DRAWING NO. 319
	BUILDING CONSERVATION TECHNOLOGY, INC. THE EHRENKRANTZ GROUP SYSKA & HENNESSY, INC.		DESIGNED J. M.	35008
			CHECKED J. M.	PKG. SHEET 5
			DATE	OF 10

FIGURE 4.



- NOTES:**
1. FOR GENERAL NOTES, ABBREVIATIONS, SYMBOL LIST AND WIRING DIAGRAM SEE DWG 02-1.
  2. NO NEW CONVENIENCE RECEPTACLES AND/OR RACKWAYS SHALL BE INSTALLED ON EXISTING CERAMIC TILE WALLS. ALL NEW EXPOSED CONDUIT RUNS SUBJECT TO FIELD COORDINATION WITH CONTRACTING OFFICER.

**THIRD FLOOR PLAN**

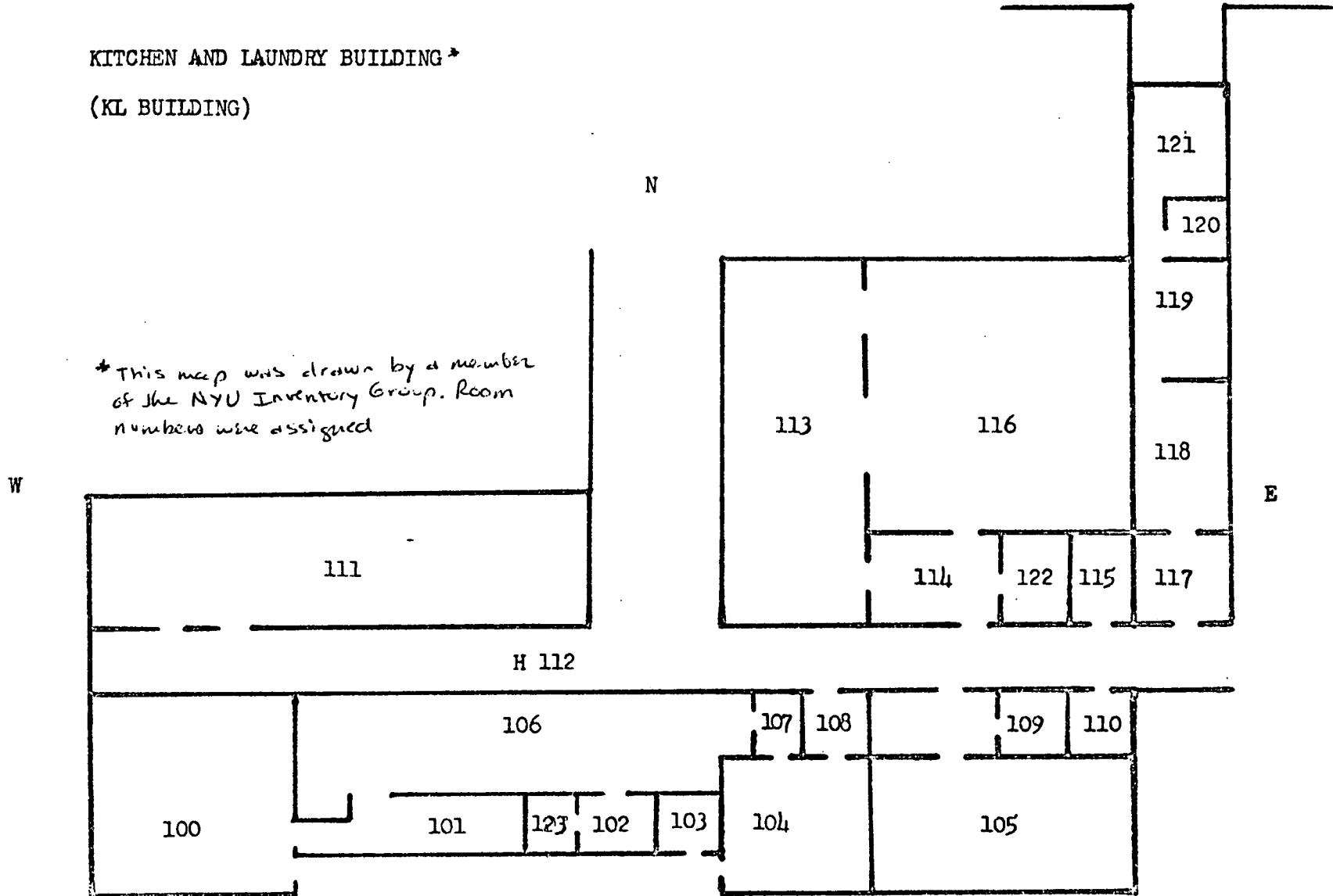


REFERENCE 	NATIONAL PARK SERVICE ELLIS ISLAND - MAIN BUILDING BUILDING CONSERVATION TECHNOLOGY, INC THE EHRENKRANTZ GROUP SYSKA & HENNESSY, INC.		PREPARED J.S.	DRAWING NO 384 28006B
			DESIGNED J.M.	DCIP PRG
			CHECKED J.M.	SHEET 6
			MAY 13 '80 DATE	OF 10

FIGURE 5.

KITCHEN AND LAUNDRY BUILDING \*  
(KL BUILDING)

\* This map was drawn by a member  
of the NYU Inventory Group. Room  
numbers were assigned



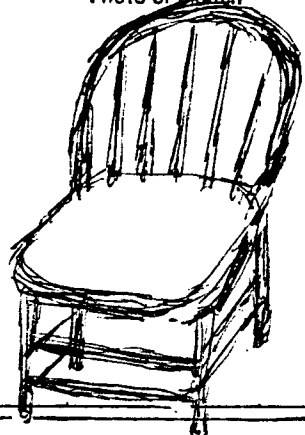
FIRST FLOOR

FIGURE 6.  
SAMPLE INVENTORY CARD

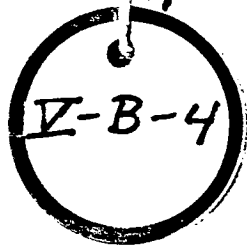
Number indicates the final count after the room inventory is completed.

Number indicates a running tabulation conducted while inventorying this particular item.

Written in red ink on the original cards.

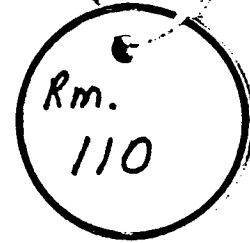
<b>V-B-4</b>	ELLIS ISLAND INVENTORY	<b>110</b>
Identification Number		Room Number <b>PROTOTYPE</b>
<p>→ <b>2</b> OBJECT: <b>A chairs</b></p>	<b>2</b>	
Room Location within the building.	<p>PRESENT LOCATION: <b>1st floor - West Wing</b></p>	<p>Photo or Sketch</p> 
	<p>CATALOGUER: <b>J. Hellman</b></p>	
	<p>DATE OF INVENTORY: <b>8-13-82</b></p>	
	<p>DESCRIPTION: <b>Wooden chairs, with 5 supporting poles on the back. Between each pair of legs are two rungs (also wooden). Remnants of green paint still remain. 1 chair is in poor condition, the other is in a fairly good state.</b></p> <p>MATERIALS: <b>WOOD</b></p>	
	<p>MEASUREMENTS IN CENTIMETERS: <b>87 x 48</b></p>	
	<p>PATENT NUMBER OR DISTINGUISHING MARKS: <b>NONE</b></p>	

SAMPLE INVENTORY TAG



FRONT SIDE

Identification number  
of inventoried object.



BACK SIDE

Room where the object  
was discovered and  
located at the time of  
this inventory.



A SELECT ANNOTATED BIBLIOGRAPHY

N.D. Ellis Island National Monument. A notebook organized by the National Park Service, Ellis Island National Monument and kept at Ellis Island Interpretors' Office.

An assortment of informational documents: letters, memorandums, notes, announcements, historical summaries, option reports, cost estimates, detailing various aspects of Ellis Island's transformation into a national monument site.

Historic Structures Report: Ellis Island/Statue of Liberty National Monument New York/New Jersey, Contract #CX-2000-8-0050 for the National Park Service, Denver Office. (1980)

A report prepared for the U.S. Government, National Park Service for the purpose of assessing the present condition and architectural resources in the areas designated as the Immigration Station. The report concludes with a development plan for future stabilization of these areas.

Dudley, Dorothy H. & Bezold, Irma, et. al. Museum Registration Methods, American Association of Museums, Washington, D.C. (1979)

A manual describing various registration procedures in art, history and science museums. Discusses methods and materials, as well as storage, packing, and shipment requirements.

Assessment of Alternatives for the General Management Plan: Statue of Liberty National Monument New York/New Jersey. National Park Service: U.S. Department of Interior. National Park Service, Denver Office. (1980)

A report on plans for the Statue of Liberty and Ellis Island National Monument. Details problems of space, money, visitors, etc. that face the two sites, and discusses the priorities and possible alternatives to previously suggested proposals.

ANNOTATED BIBLIOGRAPHY (Cont.)

Novotny, Ann. Strangers at Our Door, The Chatham Press, Inc.,  
Riverside, Conn. (1971)

Documents the immigrant story of Ellis Island, detailing the diversity of immigrant groups, the problems and processes they encountered, and the reasons behind the mass immigration, which occurred in the early 20th century. The liberal assortment of photographs interspersed throughout the text provides a good photo-documentary resource.

Pitkin, Thomas M. A Report on Ellis Island as an Immigrant Depot - 1890-1954. New York: National Park Service. (1966)

Commissioned by the Northeast Regional Office of the National Park Service, this report provides a documented study of the period in which Ellis Island was the principal immigration station in the United States. It presents a detailed account of the island's administration and organization as a government institution.

Pitkin, Thomas M. Keepers of the Gate: A History of Ellis Island.  
New York University Press, New York. (1975)

An outgrowth of the author's 1966 report for the Northeast Regional Office of the National Park Service, this study provides a detailed administrative history of the island as an immigrant depot, and includes a brief account of Ellis Island prior to the immigration era.