



Tuskegee Airmen  
National Historic Site



Moton Field, site of primary flight training for the Tuskegee Airmen, also called Airport #2.

Tuskegee Airmen National Historic Site was authorized as a unit of the National Park Service (NPS) by Public Law 105-355, November 6, 1998 to commemorate and interpret, in association with Tuskegee University, the heroic actions of the Tuskegee Airmen during World War II.

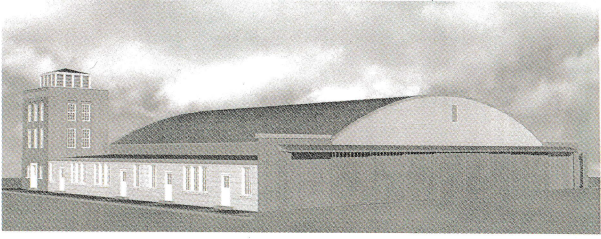
### Visiting Your National Park

The main feature of the site is a temporary Visitor Center which provides information on historic Moton Field, located about 300 yards away. Tuskegee Airmen NHS seeks to inspire present and future generations to strive for excellence by understanding and appreciating the heroic legacy of the Tuskegee Airmen through interpretation and education, and the preservation of cultural resources at Moton Field.

### What to Do?

The *Tuskegee Airmen Visitor Center* offers exhibits, interpretive programs, a book sales area and two introductory films on the Tuskegee Airmen. These films are 15 minutes and 58 minutes, and are shown upon request.

*Historic Moton Field:* Ranger-guided programs are offered at 11:00 a.m. and 2:00 p.m. Tours begin at the Visitor Center.



Hanger #2 no longer stands but it was used by the Tuskegee Airmen for maintenance and to direct planes in and out of the airport.

## Directions

From Montgomery, Alabama, follow Interstate 85 North to exit 38 (Tuskegee-Notasulga). Turn right onto Highway 81 and travel 1 mile. Turn left onto alternative route 81 (Chappie James Avenue) and travel 3/4 mile to the National Park Service parking area on the left.

From Atlanta, Georgia, follow Interstate 85 South to exit 38 (Tuskegee-Notasulga). Turn left onto Highway 81 and travel 1 mile. Turn left onto alternative route 81 (Chappie James Avenue) and travel 3/4 mile to the National Park Service parking area on the left.

## Hours and Location

Tuskegee Airmen NHS is located next to the Moton Field Municipal Airport. It is approximately 40 miles east of Montgomery, Alabama, 40 miles west of Columbus, Georgia and 133 miles west of Atlanta, Georgia via I-85.



The park is open from 9:00 am - 4:30 pm and is closed Thanksgiving Day, Christmas Day, and New Year's Day.

Tuskegee Airmen NHS is administered by the Department of the Interior, National Park Service. For more information, contact the park at the address below.

---

For seasonal park hour changes and special event information contact:

Tuskegee Airmen NHS  
1616 Chappie James Ave.  
Tuskegee, Alabama 36083

Telephone 334-724-0922  
Fax 334-724-0952  
tuinadministration@nps.gov