



Elk Hunting



Valles Caldera National Preserve is one of New Mexico's premier elk hunting locations. Between 2,000 and 2,500 Rocky Mountain elk occupy the preserve for breeding, calving and foraging. Our hunts are designed to pay homage to human's oldest relationship with animals by providing the public with a memorable hunting experience. Hunting on the preserve also assists with population management to promote restoration of aspen and riparian area vegetation.

Rule & Regulations

Hunters are responsible for knowing both state and federal rules and regulations concerning hunting in New Mexico and Valles Caldera.

Information on New Mexico hunting regulations can be found in the New Mexico Department of Game & Fish (NMDGF) *Hunting Rules & Information for Upland and Big Game*.

The Valles Caldera's Superintendent's Compendium contains information on

closures, permit requirements, and other restrictions. Copies of both are kept at the Valle Grande Entrance Station.

Hunters must carry their NMDGF license and Valles Caldera hunting permit with them at all times. *The NPS permit may be revoked if a hunter or any member of the hunt party violates any condition listed in the permit.*

The removal of any artifact, antler, obsidian or other mineral or plant material is strictly prohibited.

Hunting

Hunting is prohibited in the Valle Grande, South Mountain, and Rabbit Mountain areas, in areas restricted to public access, and within 150 yards of all developed areas including, but not limited to, buildings, roads, parking areas, and trail heads.

Hunters do not have exclusive use of any area; hunting activities may not interfere with other visitor activities. Please note that many visitors are unaware that hunting activities occur within Valles Caldera.

The permittee and all members of the hunt party must wear a minimum of 244 square inches of blaze orange during all rifle hunts.

The blaze orange requirement does not apply to hunters using a shotgun or archery equipment.

All hunters are required to submit the location within the preserve where their game was harvested and to submit a tooth (incisor) from their harvested elk to assist elk research and monitoring efforts within the preserve.

Dogs, tree stands, ATVs/UTVs, and game cameras are not permitted. Freestanding blinds are allowed, but must be removed daily.

Remember, safety is your responsibility.

Camping

Primitive tent camping is allowed anywhere within the hunting areas.

- Dispersed tent camping only.
- Must set up camp 1/2 mile from roads or trails shown on map.
- Camp stoves only; no open fires.
- Be aware of bears and mountain lions.
- Water from streams and springs require treatment for safe drinking.
- Pack out all trash and toilet paper.

RV's, pop-ups, and travel trailers are allowed only at Banco Bonito. Tents are also allowed.

- No open fires allowed.

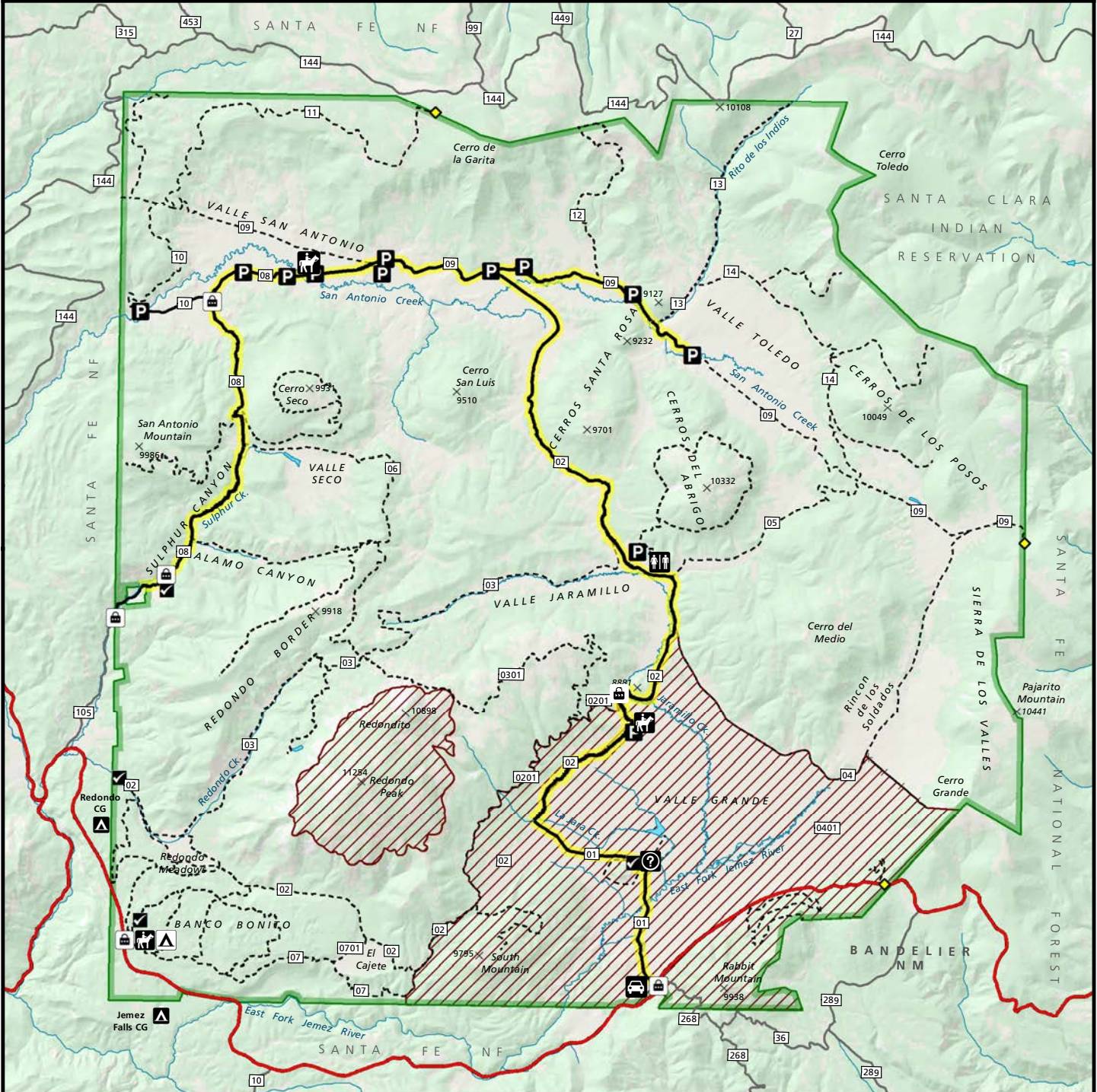
Emergencies

Medical Emergencies: Dial 911

During operating hours and after hours: Report all incidents to Valles Caldera Law Enforcement staff through NPS Glen Canyon dispatch at 928-608-6301. Please leave a message after hours.



Elk Bull



- Valle Grande Entrance Station*
 - Horse Trailer Parking
 - Main Entrance
 - Restroom
 - Primitive Campground
 - Developed Campground
 - Parking
 - Remote Access Point
 - Authorized motor vehicle route for hunting**
 - Hiking/Biking/Equestrian Route
 - USFS Roads
 - No Hunting
 - Locked gate (combo lock)
 - Special use permit drop box
- * Restrooms and parking available
** Check at Entrance Station for road closures due to road conditions

Motorized Vehicles Permitted Only on Authorized Motor Vehicle Route

Parking Allowed Along Authorized Motor Vehicle Route Provided Vehicles Are Parked Safely & Not Blocking Access



07/19/2019

Vehicle Access & Use

All vehicles must remain on the designated backcountry vehicle route. Parking is allowed in designated areas and along designated route as long as the vehicle is safely parked and not blocking access to roads, trails, or gates.

Only one vehicle per hunt party is allowed. Excess vehicles may be parked at the Valle Grande Entrance Station or Banco Bonito.

Vehicle travel outside of designated route is not permitted to retrieve game; game carts, horses, and mountain bikes may be used.

The use of off-road vehicles is prohibited.

Roadways may be closed seasonally (snow), for resource protection, or for administrative use. Please check for current updates and road conditions at the Valle Grande Entrance Station

Follow posted speed limits.

After hours access is through locked gates. Please verify gate is re-locked after passing through. Do not give the gate combination to anyone outside of the hunt party.

Gate combination is _____.