

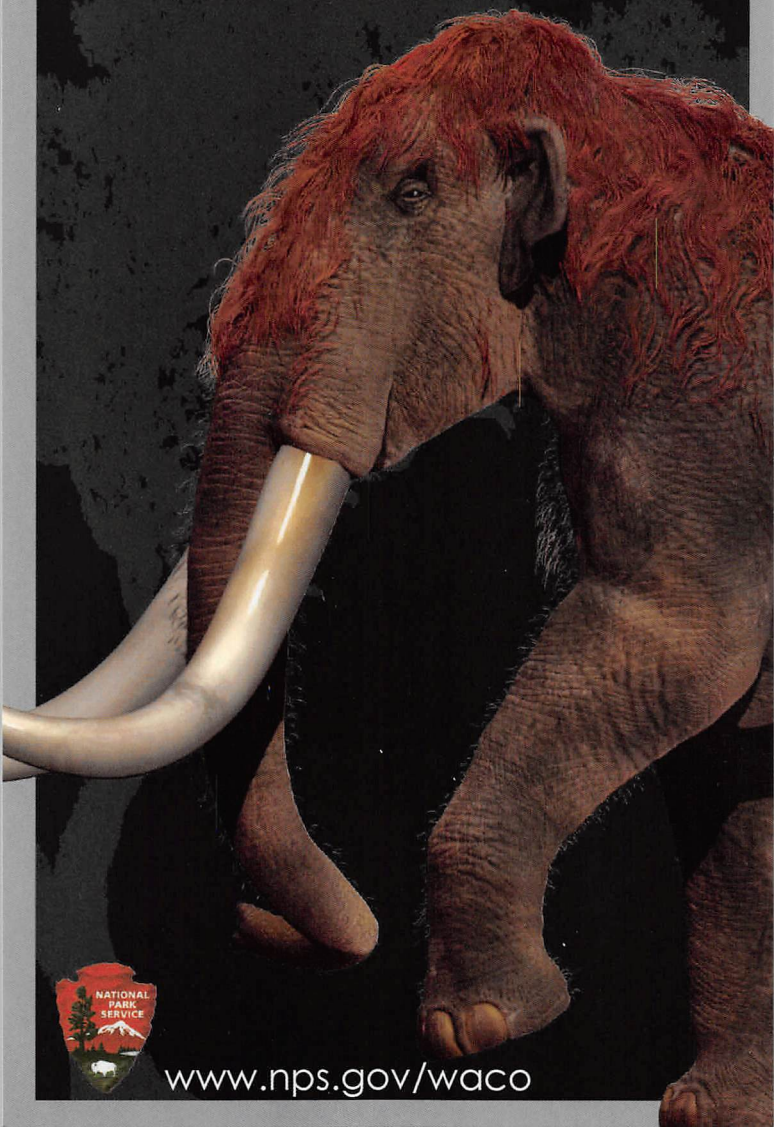
Discover a Lost World



WACO

MAMMOTH

NATIONAL MONUMENT



www.nps.gov/waco

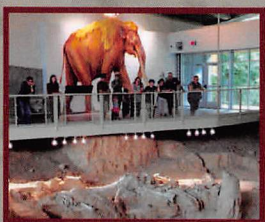
"The nation's first and only recorded discovery of a nursery herd of Pleistocene mammoths." - National Park Service

In 1978, two men stumbled upon a bone in a ravine near the Bosque River.

A LOST WORLD WAS DISCOVERED!

Waco Mammoth National Monument provides visitors with a glimpse into a long-lost world. Columbian mammoths, ground sloths, and saber-toothed cats once roamed the land that is now Texas. The site features a climate-controlled dig shelter and a suspended walkway that allows visitors to peer down on the bones of mammoths and a camel that died thousands of years ago.

The monument is co-managed through a unique partnership with the City of Waco, National Park Service, Baylor University, and Waco Mammoth Foundation. In addition to touring the dig shelter, visitors can enjoy walking on a scenic trail and shopping in the welcome center gift shop.



— Explore the Park —

Hours & Rates:

Sunday - Saturday: 9 a.m. to 5 p.m.

Please note that access to the fossil bed is by guided tour only. (National park passes do not apply to tour fees.)

Guided Tour Fee:

Adults: \$5 ; Seniors: \$4 ; Military: \$4
Educators: \$4 ; Students: \$4 ;
Children: \$3 ; 3 & under: Free

Call for group rates, tours, and activities.
Groups must be booked in advance.

*The park is closed: Thanksgiving,
Christmas, and New Year's Day*



Like Us on Facebook!

