

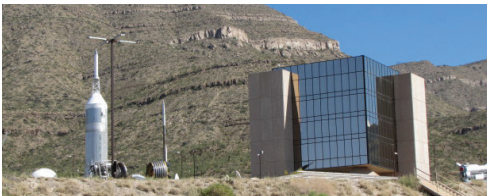


Area Attractions Near White Sands



Have you ever needed to just get away from everything for a day or two? Within a two-hour drive or less from White Sands, you can enjoy special places that can take you back in time or even up in space. Many of these areas can be enjoyed in one day, so you can spend a weekend enjoying White Sands National Monument and several great places nearby!

New Mexico Museum of Space History & IMAX



New Mexico Museum of Space History is located in Alamogordo just 20 miles from White Sands. The museum is a four-story building that describes New Mexico's place in space history. The museum also has an IMAX theater. To get there, just follow

White Sands Blvd. to Indian Wells, turn right, and follow the brown signs to the museum.

For more information:
Call 575-437-2840 or 1-877-333-6589
Visit www.nmspacemuseum.org

Alameda Park Zoo



Alameda Park Zoo is the oldest zoo in the southwest and is located just 15 miles from the monument on White Sands Blvd. Established in 1898, the zoo is home to over 250 animals ranging from ducks to Mexican grey wolves and everything in between!

For more information:
Call 575-439-4290
Visit ci.alamogordo.nm.us/coa/communityservices/zoo/Alameda_Park_Zoo_Information_and_Fees.htm

Toy Train Depot & Museum



The Toy Train Depot and Museum is located 17 miles from the monument on White Sands Blvd. The depot is home to New Mexico's first railroad museum and a miniature train that can take you all around Alameda Park. The building was built in 1898

and previously served as the Torrance New Mexico Central Railroad Depot.

For more information:
Call 575-437-2855

Cloud Climbing Trestle



The trestle is located 30 miles from White Sands and is near the village of Cloudcroft. It can be viewed from Highway 82 or you can hike to see the remnants of the train tracks. The trestle is a small remnant of a train system that carried wood

and passengers from Cloudcroft to Alamogordo. The Trestle was used from 1899 to 1947.

For more information:
Call 575-682-2551
Visit www.fs.usda.gov/lincoln

Lincoln National Forest



The Lincoln National Forest protects 1,103,441 acres of land. Of the three districts that make up the Lincoln National Forest, the Sacramento District has a visitor center in Cloudcroft, just 30 miles from White Sands on Highway 82. The forest

offers many recreational activities such as hiking, camping, skiing, and snowshoeing.

For more information:
Call 575-434-7200
Visit www.fs.usda.gov/lincoln

Aguirre Springs Recreation Area



Located 39 miles southwest from White Sands on Highway 70, Aguirre Springs is open year-round for camping, hiking, and picnicking. It is located on the east side of the Organ Mountains, which are among the steepest mountains in the western United States. Managed by the BLM,

Aguirre Springs is part of the Organ Mountains National Monument.

For more information:
Call 575-525-4300
Visit www.blm.gov/nm/st/en/prog/recreation/las_cruces/aguirre_spring_campground.html

New Mexico Farm & Ranch Heritage Museum



Located just over 50 miles from White Sands, this museum catalogs New Mexico's farming and ranching history. One can enjoy several exhibit areas and a barn that houses live animals. The museum also hosts living history demonstrations. Call ahead for program schedules.

To get here, take Highway 70 west to I25 south. Exit on exit 1, and follow University Ave. east until it becomes Dripping Springs Road.

For more information:
Call 575-522-4100
Visit nmfarmandranchmuseum.org

White Sands Missile Range Museum and Missile Park



The White Sands Missile Range Museum and Park are great places to visit for military history aficionados and for those interested in learning about America's missile and space history. The museum and park are located only 30 miles southwest from White Sands on Highway 70. A

visitor's pass must be acquired at the entrance gate to the missile range.

For more information:
Call 575-678-8824
Visit www.wsmr-history.org

National Solar Observatory

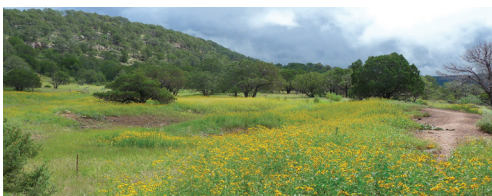


Have you ever wanted to learn more about the solar system? If so visit the National Solar observatory located on Sacramento Peak, 51 miles from White Sands in the Lincoln National Forest. This observatory has a visitor center, gift shop, and

amazing telescopes that give scientists a view into space.

For more information:
Call 575-434-7000
Visit www.nso.edu

Oliver Lee Memorial State Park



Located just 24 miles from White Sands on Highway 54, Oliver Lee Memorial State Park is a great place to learn about the history of the area. Tours are only given on certain days of the week. Call the park for program schedules. The park is also ideal for

hiking and camping (RV and tent). Managed by NM State Parks.

For more information:
Call 575-437-8284
Visit www.emnrd.state.nm.us/SPD/oliverleestatepark.html

Three Rivers Petroglyph Site



Three Rivers Petroglyph Site is a recreation area managed by the BLM, which is located 51 miles southeast of White Sands on Highway 54. Home to thousands of petroglyphs, Three Rivers is a nice place to stop and learn about the history of the area. This

site also offers areas for RV and tent camping as well as picnicking.

For more information:
Call 575-525-4300
Visit www.blm.gov/nm/st/en/prog/recreation/las_cruces/three_rivers.html

Valley of Fires Recreation Area



Valley of Fires Recreation Area is located 77 miles north of White Sands off Highway 380, near Carrizozo NM. This site is managed by the BLM, offering opportunities for hiking, picnicking, and camping. Explore one of the youngest lava flows in the continental U.S. by

visiting this unique and interesting area.

For more information:
Call 575-648-2241
Visit www.blm.gov/nm/st/en/prog/recreation/roswell/valley_of_fires.html

Historic Old Mesilla



Travel back in time by visiting this historic community with unique New Mexican charm. The historic town plaza witnessed many important events, such as the consummation of the Gadsden Purchase. The J. Paul Taylor Visitor Center is located

off of Highway 70 on Avenida de Mesilla near Las Cruces, NM and approximately 58 miles southwest of White Sands.

For more information:
Call 575-524-3262 ext. 117