

Women's Rights

National Historical Park
Seneca Falls, New York



Guide to the Wesleyan Chapel Block Complex

The Park

The beginning of the 19th Century women's rights movement and its founders are the focus of Women's Rights National Historical Park. Legislation establishing the park was signed on December 28, 1980. The park, located in Seneca Falls and Waterloo, New York, is still being developed. The Elizabeth Cady Stanton House, 32 Washington Street, is restored and

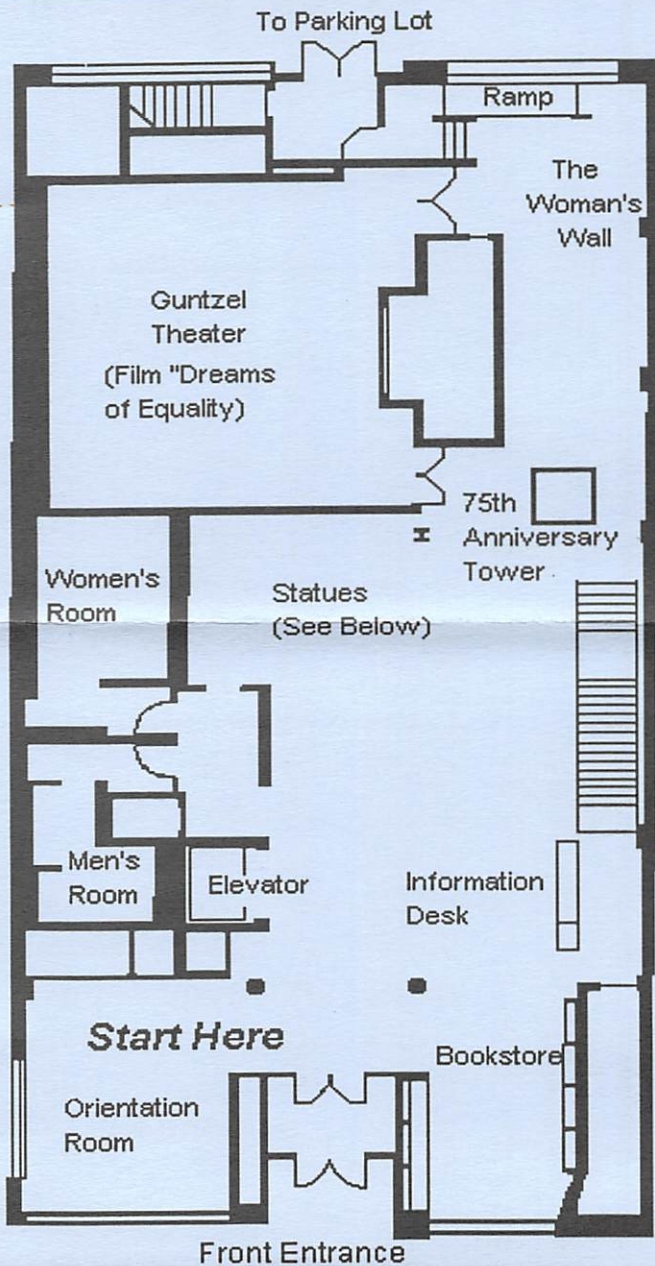
open to the public, as is the Wesleyan Chapel in Seneca Falls. The M'Clintock house in Waterloo is undergoing restoration.

Your Visit

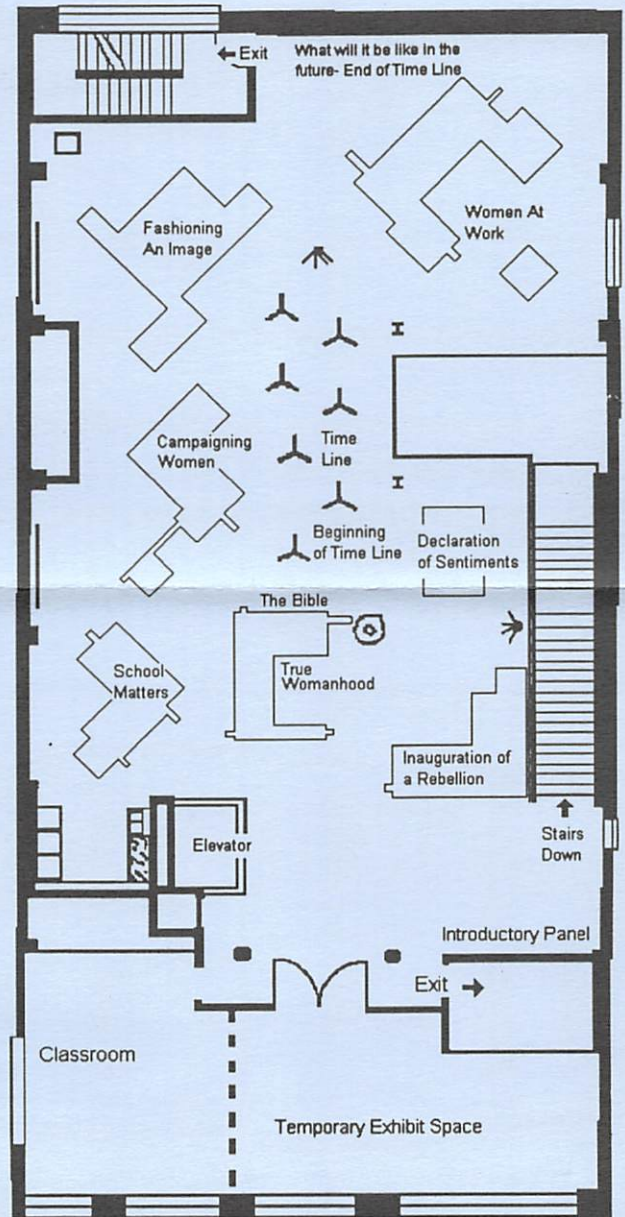
Your visit to the Women's Rights National Historical Park should begin in the Orientation Room on the first floor of the Visitor Center. Admission to the park is free. Find out about the First Women's Rights

Convention and the history of the women's rights movement through interactive exhibits, a 25-minute movie, "Dreams of Equality" and Ranger Programs.

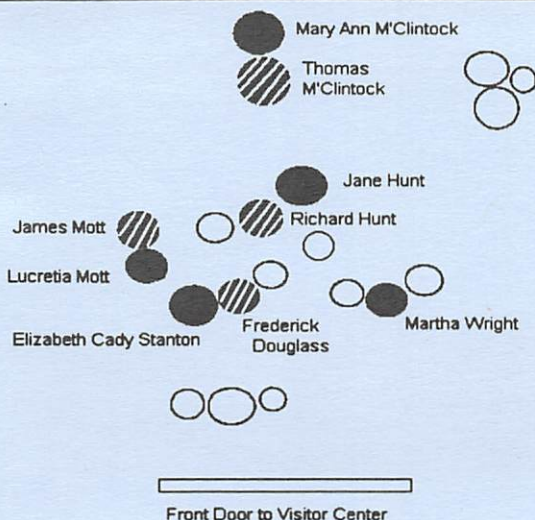
Visit the Wesleyan Chapel, the site where the convention was held, and read the Declaration of Sentiments engraved on the waterwall next to the Visitor Center.



First Floor Layout



Second Floor Layout



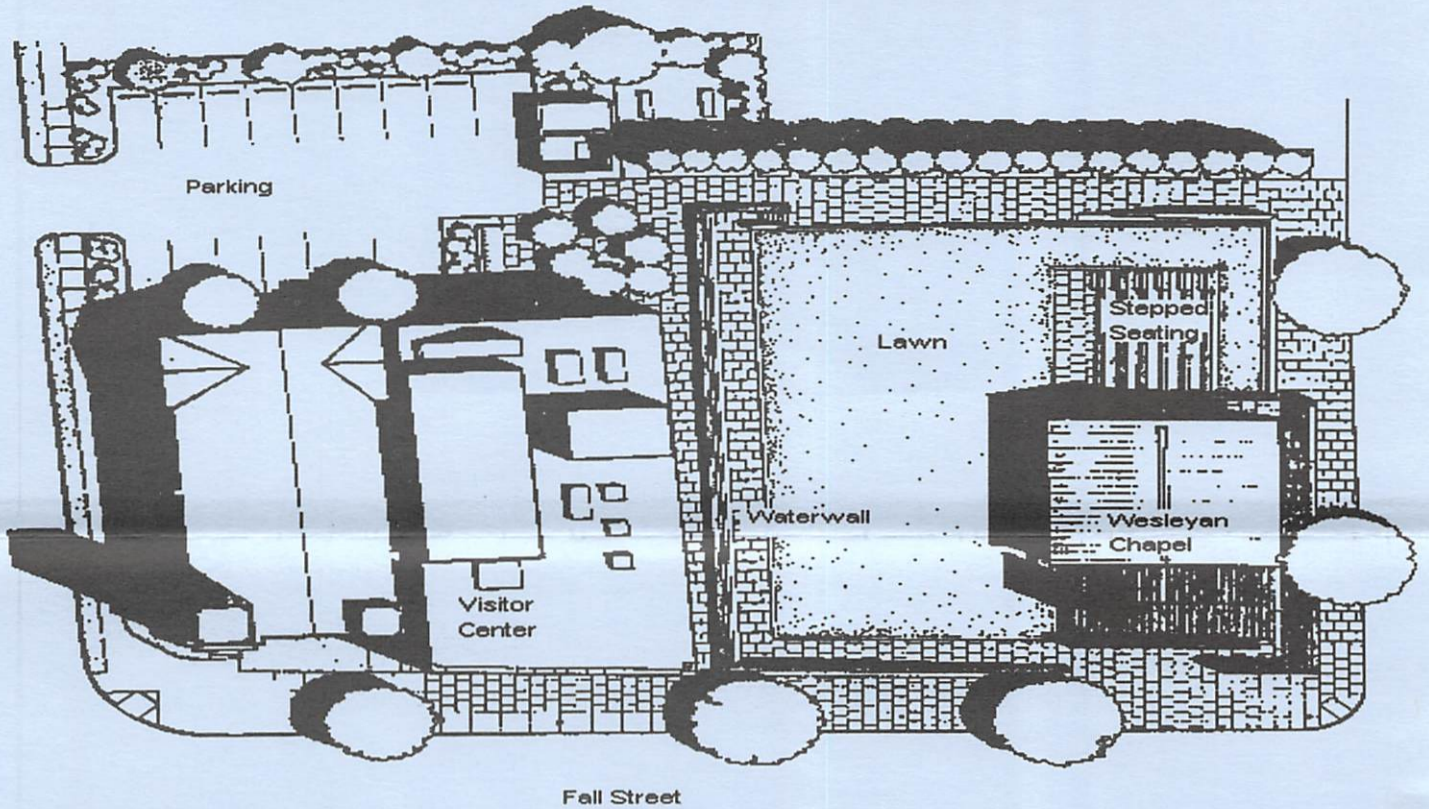
Statues of Convention Attendees

The Statue of Elizabeth Cady Stanton and Frederick Douglass face the main entrance to the Visitor Center.

Represented are the five women who organized the First Women's Rights Convention and men who supported them.

- = Organizer of the Convention
- ▨ = Men who supported the Organizers
- = Unidentified Convention Attendees

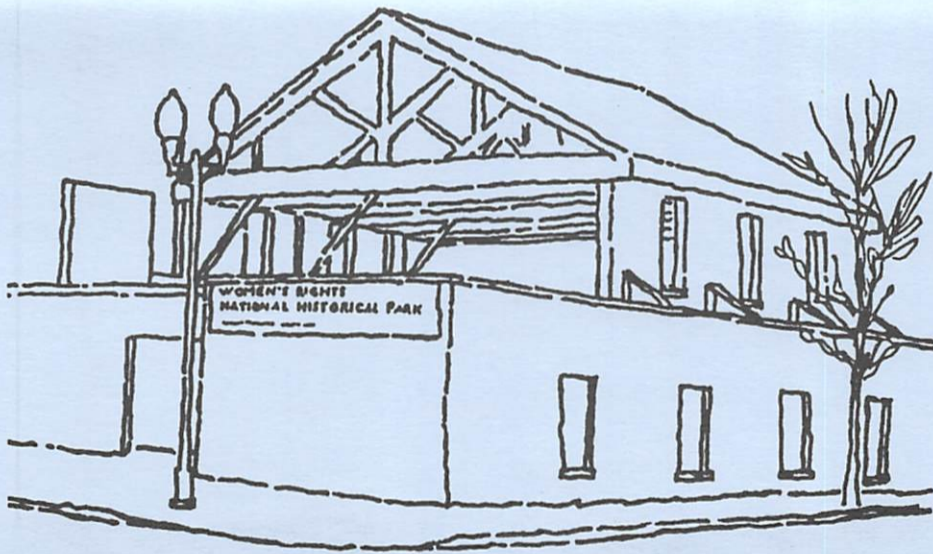
WESLEYAN CHAPEL BLOCK COMPLEX



The Wesleyan Chapel and the Waterwall

The Wesleyan Chapel, sometimes called the "Great Lighthouse" because of it hosting the first women's rights convention and other reform gatherings in the 1800's. It has been altered by time and neglect. What remains has been

enclosed by a protective wall. You can clearly differentiate between old historic fabric and new stabilizing brick. The space is open to the public. You are encouraged to enter and view the Chapel. Please do not lean against the walls or climb on and sit in the windows; the bricks are very soft and will crumble.



A small lawn, Declaration Park, separates the Chapel from a commemorative waterwall on which the Declaration of Sentiments of 1848 and the names of the 100 women and men who signed that critical document are inscribed.

Administration

The Park is administered by the National Park Service, U.S. Department of the Interior. The Superintendent, whose address is 136 Fall Street, Seneca Falls, New York 13148, is in immediate charge. Write or call 315-568-2991 for further information. The park's fax number is 315-568-2141.

