

# YELLOWSTONE NATIONAL PARK



*Western Ways Photo*

*Old Faithful Geyser*

**SEASON**

**June 20 to September 12**

**Motorists - May 1 to October 15**

(Dates approximate)

UNITED STATES  
DEPARTMENT OF THE INTERIOR  
HAROLD L. ICKES, *Secretary*

NATIONAL PARK SERVICE  
NEWTON B. DRURY, *Director*



**Any Close Approach to Bears Is Dangerous  
Feeding, Molesting, Teasing, or Touching Bears Is Prohibited**

# YELLOWSTONE NATIONAL PARK

WYOMING, MONTANA, AND IDAHO

**Y**ELLOWSTONE NATIONAL PARK was created by act of Congress on March 1, 1872. Its present boundaries include an area of about 3,472 square miles, or approximately 2,220,000 acres.

Largest and oldest of our national parks, Yellowstone lies in the extreme northwest corner of Wyoming, and includes in its boundaries a small portion of Idaho and Montana. The central portion is essentially a broad, elevated volcanic plateau with an average elevation of about 8,000 feet.

Practically the entire region is volcanic, and the canyon, hot springs, and "paint pots" present an amazing variety of colorful formations. Both the surrounding mountains and the interior plain are composed largely of material once ejected as ash and lava from depths far below the surface.

## The Geysers

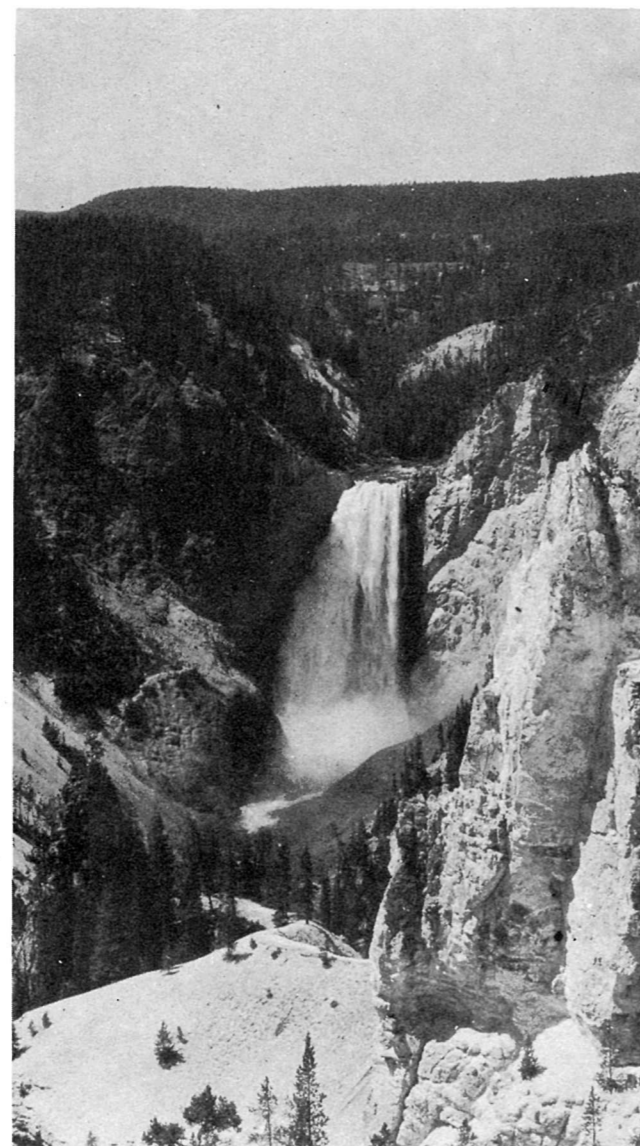
Yellowstone's geysers are celebrated the world over; for size, power, variety of action, and number the region has no competitor. Altogether, there are about 10,000 separate and distinct thermal features. Most of the geysers are located in 6 principal basins—the Norris, Lower, Midway, Upper, Heart Lake, and Shoshone—all lying in the west and south-central portion of the park. Some, like Old Faithful, Daisy, and Riverside, spout at regular intervals; others are irregular. In the geyser basins the material making up the walls of the cracks and tubes of the geysers is of silica and strong enough to withstand the explosive action of the steam. A less strong material, such as travertine, will not withstand this explosive action and hence will not produce geysers.

## Other Hot-Water Phenomena

While the geysers of Yellowstone are largely confined to particular areas, other hot-water manifestations occur throughout the park at more widely separated points. Marvelously colored hot springs, mud volcanoes, and other strange phenomena compel attention.

In certain sections, as at Mammoth, hot water has brought to the surface quantities of white mineral deposits forming high terraces on which are beautifully encrusted basins covering, in places, trees of considerable size. The hot water flows over the edges of these basins.

Well-marked trails enable the visitor to study the formations at close range and in safety. Visitors should keep on the solid trails, as in many places the crust is thin and walking on it is extremely dangerous.



The Canyon and Yellowstone Falls Grant Photo

## Yellowstone Lake

A scenic attraction of the first order, Yellowstone Lake is the largest body of water in North America at so great an altitude. Lying 7,731 feet above sea level, it covers 139 square miles and has a shore line of about 100 miles. Its maximum depth is 300 feet. At the outlet of the lake is located the famous Fishing Bridge.

## Grand Canyon of the Yellowstone

If there were no geysers or other hot-water phenomena in Yellowstone, the spectacular Grand Canyon of the Yellowstone River alone would warrant national park status. It is the cameo of canyons, with the dominant color, particularly on a sunny day, yellow or a glaring white. Closer inspection, however, reveals a great variety of colors.

## Waterfalls

Among the most beautiful spectacles of Yellowstone are its waterfalls, some of the largest of which are located in or near the canyon. Many visitors are amazed to learn that one of these, the Lower Falls, is nearly twice as high as Niagara, or 308 feet. Just above is Upper Falls, which drops 109 feet with a deafening roar, and some 20 miles to the north Tower Falls plunges 132 feet over rugged boulders. Among the other falls worthy of a visit are Lewis and Moose Falls in Lewis Canyon near the South Entrance, and Gibbon Falls, east of Madison Junction. All are easily reached by automobile.

## Fossil Forests

The fossil forests, which really are not as impressive as the term "forests" might imply, are spread over extensive areas in the northern part of the park. They are not readily accessible to the visitor, with the exception of one small area on a branch road, about a half mile from the main road between Tower Junction and Mammoth Hot Springs.

## Wildlife

Yellowstone is one of the largest wildlife sanctuaries in the world. With all wildlife under the constant protection of the National Park Service, the animals have learned that no harm will come to them. While the visitor may not see many animals from the highway, the quiet watcher on the trails may find deer, bears, elk (wapiti), and antelopes (pronghorn), and even mountain sheep (big-horns), coyotes, moose, and buffalo (bison).

Bears are among the most numerous animals in the park; brown, cinnamon, and black bears—all members of the same species—are common, and even the huge grizzlies are found. **While apparently friendly, the bears are wild animals and should be treated as such. It is extremely dangerous and contrary to park regulations to feed, molest, touch, or tease the bears. Observe them only from a safe distance.**

In the extreme eastern section of the park is a buffalo range, accessible in summer only to those using the trails. A herd is provided at Antelope Creek, near Tower Falls, for other visitors.

More than 200 species of birds find sanctuary in the confines of the park. Eagles may be seen among the crags; wild geese and ducks are found in profusion; and many large white swans and pelicans add to the picturesqueness of Yellowstone Lake.

## Trees

In Yellowstone, as nearly everywhere in the West, the majority of the trees are evergreens. Its forests include lodgepole, limber, and whitebark pine, alpine and Douglas fir, Engelmann spruce, Rocky Mountain juniper or cedar, aspen, narrowleaf cottonwood, red birch, and alder.

## Fishing

Most of the streams and lakes from timber line to the lowest altitudes contain trout of one or more species and a few contain whitefish and grayling. But the more accessible waters are fished so steadily that the trout become "educated" and wary. Back in the depths of the mountain fastnesses, the fish are much less disturbed and can be caught more readily. **No fishing license is required in the park. Fish caught in the park and transported outside are subject to the laws of the States into which taken.**

## Roads and Trails

The main road system of Yellowstone is roughly in the form of a figure 8. The Grand Loop Road, as it is called, includes some 142 miles of improved roads. Connecting the Grand Loop with the park entrances are about 100 miles of entrance roads, while other subsidiary roads leading to interesting features bring the grand total to approximately 300 miles within the park.



Mother Grizzly Bear With Twin Cubs

in immediate charge is the superintendent, whose address is Yellowstone Park, Wyo. All comments regarding service in the park should be addressed to him. Offenders charged with violations of the rules and regulations are tried at headquarters by the United States Commissioner.

## Protection Service

Park rangers constitute the protection organization for the park and are responsible for law enforcement, traffic control, forest fire detection and suppression, the operation of entrance checking stations, and the field administration of the nine ranger districts into which the park is divided. They handle lost and found property, information, visitors' suggestions and complaints, and render numerous other services to the public. Ranger stations are located at the principal points, and all accidents, fires, and lost or found property should be promptly reported. **Consult the men in uniform—they are at your service.**

## Mail Service

Visitors contemplating trips to the park should have their mail addressed care of General Delivery, Yellowstone Park, Wyo., the main post office, located at Mammoth Hot Springs. Those arriving by train and stopping at hotels or lodges should have their mail sent care of the Yellowstone Park Co., Yellowstone Park, Wyo., with the name of the hotel or lodge at which they expect to call for it.

There are also 6 substations, located at Old Faithful, Thumb, Lake, Fishing Bridge, Canyon, and Tower Falls, to which daily service is operated during the travel season.

## How to Reach the Park

**By Automobile.** Yellowstone may be reached from all major points via improved United States highways. Automobile associations, tourist bureaus, chambers of commerce, and leading gasoline stations throughout the country can furnish reliable information and maps. Inquiry should be made en route concerning road conditions.

**By Railroad.** The Northern Pacific Ry. serves the park on the north at Gardiner, Mont.; also at Red Lodge, Mont., 69 miles from the Northeast Entrance; and at Bozeman, Mont. The Chicago, Milwaukee, St. Paul & Pacific R. R. serves the Gallatin Gateway approach.

The West Entrance is reached by the Union Pacific R. R., a branch of which also leads to Victor.



Idaho, connecting with the Teton Pass highway south of Grand Teton National Park. The East Entrance is served by the Chicago, Burlington & Quincy R. R. to Cody, Wyo.

During the park season round-trip excursion tickets at reduced rates are sold at practically all railroad stations and ticket offices in the United States and Canada.

In connection with railway tickets to Gardiner, Bozeman, Red Lodge, Gallatin Gateway, West Yellowstone, and Cody, standard 2½-day tours of the park are sold at all railroad ticket offices, where full information may be obtained. The basic rates for these tours, including bus transportation and hotel accommodations in the park, is \$36; with lodge accommodations, \$33.50. These rates do not provide for single rooms or room with bath.

The National Park Service recommends to the traveling public that stop-overs of as long duration as practicable be planned at points within the park; that the Yellowstone be regarded not alone as a region which may be glimpsed on a hurried trip of a few days but also as a vacation playground of boundless opportunity for rest and recreation.

**By Bus.** The Burlington Transportation Co. serves Cody, Wyo.; the Union Pacific Stages, Inc., operates to West Yellowstone, Mont.; and the Northland Greyhound Lines serves Livingston and Bozeman, Mont. From Cody, West Yellowstone, and Bozeman, bus passengers use the busses of the Yellowstone Park Co., for their park trip, while from Livingston the trip can be made by train or bus to Gardiner, Mont., the North Entrance, at which point the busses of the Yellowstone Park Co., are available. For further information regarding bus trips to and through the park, address the Yellowstone Park Co., Yellowstone Park, Wyo.

**By Airplane.** Joint service of the United Air Lines and the Western Air Lines to the West Yel-



North Entrance Arch Western Ways Photo

lowstone Airport makes the park only a few hours distant from all parts of the United States. Northwest Air Lines planes connect at Butte, Mont., with Western Air Lines planes to West Yellowstone, while Northwest service to Billings, Mont., connects with the Cheyenne-Billings route of Inland Air Lines.

## Free Public Campgrounds

There are about 15 improved campgrounds supplied with water, sanitary facilities, and cooking grates. Between 25 and 30 smaller sites are scattered throughout the park for persons who wish to get away from the main points of concentration. Wood gathered for fuel should be taken from dead or fallen trees. Visitors are requested to keep the campgrounds clean, to burn combustible rubbish, and to place all other garbage and refuse in available garbage cans.

## Accommodations and Expenses

**Hotels.** The Mammoth Springs Hotel, Old Faithful Inn, and Canyon Hotel, operated by the Yellowstone Park Co., are open from about June 20 to September 12. These are first class hotels with the charm of a wilderness setting, and the prices are comparable with those prevailing in metropolitan hotels of the same type. Rates range from \$2.75 per day, without meals, for 1 person in a room without bath, to \$9 per day for 1 person in a room with bath, meals included. Single meals are: breakfast \$1.25; lunch and dinner \$1.50 each.

In connection with the Mammoth Springs Hotel, there are comfortable cottages, some of which have hot and cold running water. Others are also equipped with shower and toilet. The rates for these cottages range from \$1.75, single, for cottage with running cold water, to \$3.50, single, for cottage with shower and toilet.

**Lodges.** Lodges are maintained at Old Faithful, Yellowstone Lake, Canyon, and Camp Roosevelt by the Yellowstone Park Co.; \$1.50 a day each for 2 or more in a cabin; children up to 8 years old, half rates.

**Cabins and Cafeterias.** Cabins are available at rates ranging from \$1 a night for 1 person to \$2.25 for 4 persons. They are equipped with the necessary furniture, but do not include bedding, linens, or cooking utensils. These items may be rented at reasonable prices if one does not have all his camping equipment. The rate for a fully equipped cabin is \$1.75 a night for 1 person; 2 or more in a cabin, \$1.50 each. There are also cafeterias at Mammoth Hot Springs, Old Faithful, West Thumb, Fishing

Bridge, and Canyon automobile campgrounds; cabin accommodations and meals at Camp Roosevelt.

It is advisable to request reservations in advance for hotel, lodge, and cabin accommodations by writing to the Yellowstone Park Co., Yellowstone Park, Wyo.

**Boats.** Speedboats, launches, rowboats, and fishing tackle may be rented. Launches, including use of fishing tackle, cost \$3.50 an hour. Half-hour speedboat trips on Yellowstone Lake are made for \$1 a person. A rod, reel, and landing net may be rented for 50 cents a day. A boat trip, including fishing and fish fry at Stevenson Island, is a popular feature.

**Saddle Horses and Guides.** There is no better way to see the park than on horseback over some of the 900-odd miles of trails. An unlimited number of specially scheduled trips are available. Trips may be made for as low as \$2. Horses may be rented at 75 cents an hour; \$2.50 for a half day; and \$3.50 for a full day of 8 hours. Guide service is available for \$1 an hour; \$3 a half day; and \$5 for a full day. Horses may not be rented without a guide.

**Transportation.** The Yellowstone Park Co. maintains bus and special car service for transportation to and from all park entrances, park tours, side trips, and Grand Teton National Park, south of Yellowstone. Inquire at any concentration point in the park for rates and schedules.

**Swimming Pools.** Swimming pools, using natural hot water from the hot springs and geysers, are located at Mammoth Hot Springs and Old Faithful.

Rates mentioned herein may have changed slightly since issuance of this folder, but the latest rates approved by the Secretary of the Interior are on file with the superintendent and park operators.

## Miscellaneous Services

**Photographic Service.** Haynes, Inc., address, Yellowstone Park, Wyo., in summer, and 341 Selby Avenue, St. Paul, Minn., at any season, maintains picture shops at Mammoth Hot Springs, Old Faithful, West Thumb, Fishing Bridge, Canyon, and Tower Falls, and stands in various hotels and lodges for sale of photographs in all sizes and styles, as well as handpainted enlargements, lantern slides, motion pictures, souvenir post cards, photographic supplies, and guide books. Laboratories are maintained for developing, printing, and enlarging.

**General Stores and Newsstands.** General stores are located at Mammoth Hot Springs, Old Faithful, West Thumb, Lake, Fishing Bridge, Canyon, Tower Falls, and Camp Roosevelt. In all general stores, in addition to complete lines of groceries, clothing, and

campers' supplies, are carried curios, souvenirs, tobacco, smokers' supplies, etc. Stores are open before and after the main season to serve motorists.

In all hotels and lodges there are newsstands at which curios, souvenirs, newspapers, magazines, tobacco, smoking supplies, etc., are also available.

**Automobile Supplies.** The Yellowstone Park Co. and the general stores throughout the park are authorized to sell gasoline and oil, and the company and filling stations carry a stock of automobile accessories, tires, etc. The company also maintains garages and repair shops at Mammoth Hot Springs, Old Faithful, Fishing Bridge Auto Camp, Canyon, and Tower Falls.

**Fuel.** Woodyards are operated on the cash-and-carry basis by the Yellowstone Park Co. in all large automobile campgrounds at which bundles of sawed and split wood of convenient size are obtainable at prices approved by the Department of the Interior.

## Medical Service

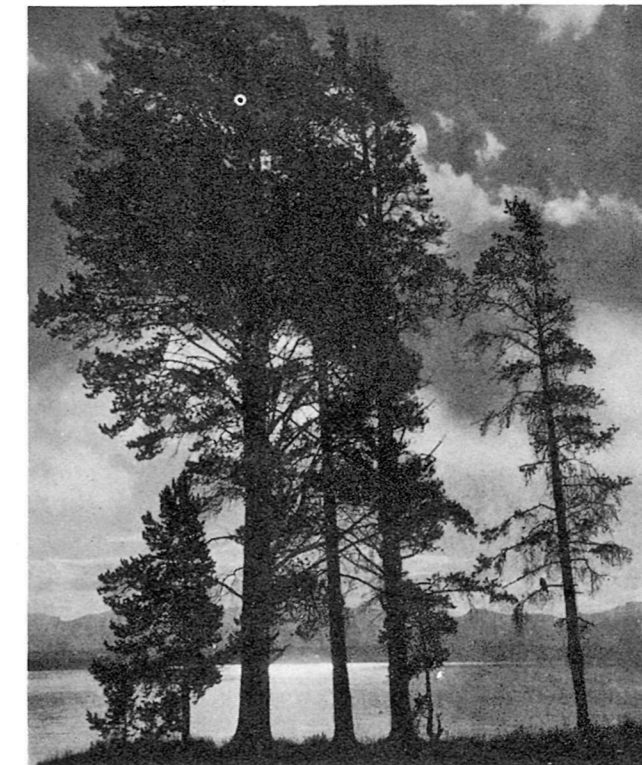
A well-equipped hospital, with physicians, surgeon, and trained nurses, is located at Mammoth Hot Springs. Trained nurses are also stationed in each hotel and lodge, and physicians on the hospital staff attend patients at any place in the park upon call. In case of accident or illness requiring the attention of a physician or nurse, this medical service may be summoned by telephone from hotels, lodges, or ranger stations. Rates for medical service are comparable with rates for similar services in nearby communities and are approved by the Secretary of the Interior.

## Telegraph and Telephone Service

Telegrams may be sent from hotels or lodges to any part of the world. Park visitors should use Yellowstone Park, Wyo., as their telegraphic address and should inquire for messages at the telegraph office in the Mammoth Springs Hotel. Lists of undelivered telegrams are posted daily throughout the park. Telephone service is available to any part of the world to which Bell System lines connect.

## Religious Services

Catholic, Protestant, and Latter Day Saints services are conducted each Sunday during the main season at several locations in the park.



Western Ways Photo

Sun Reflects on Yellowstone Lake

## Motor Vehicle Regulations

(Extracts from Rules and Regulations Governing National Parks)

**Lights.** All motor vehicles shall be equipped with head and tail lights, the headlights to be of sufficient brilliancy to insure safety in driving at night, and all lights shall be kept lighted during the period from one-half hour after sunset to one-half hour before sunrise when the vehicle is on a road. Headlights shall be dimmed, depressed, or tilted when meeting other vehicles, riding or driving animals, bicyclists, or pedestrians.

**Speed.** Automobiles and other vehicles shall be so operated as to be under safe control of driver at all times. The speed shall be kept within such limits as may be necessary to avoid accidents. Speed of automobiles and other vehicles, except ambulances and Government cars on emergency trips, is limited to 40 miles per hour on straight and open stretches and 25 miles per hour in restricted areas. Maximum speed for cars towing trailers and trucks of 1½-ton capacity or over is 30 miles per hour on straight stretches and 25 miles per hour in restricted areas.

**Right-of-Way.** Any vehicle traveling slowly on any roads in park, when overtaken by faster-moving

# YELLOWSTONE NATIONAL PARK



Western Ways Photo

Old Faithful Geyser

## SEASON

June 20 to September 12

Motorists - May 1 to October 15

(Dates approximate)

UNITED STATES  
DEPARTMENT OF THE INTERIOR  
HAROLD L. ICKES, Secretary

NATIONAL PARK SERVICE  
NEWTON B. DRURY, Director



Any Close Approach to Bears Is Dangerous  
Feeding, Molesting, Teasing, or Touching Bears Is Prohibited



motor vehicle, and upon suitable signal from such overtaking vehicle, shall move to right to allow safe passage.

When saddle horses or pack trains approach, motor vehicles shall be so manipulated as to allow safe passage for other party. Saddle horses and pack trains have right-of-way over motor-propelled vehicles at all times.

**Following Vehicles.** Except in slow-moving traffic, a vehicle shall not follow another vehicle closer than 50 feet, nor closer than 15 feet at any time.

**Clutches and Gears.** No motor vehicle shall be operated on a highway with clutch disengaged or gears out of mesh except for purpose of changing or shifting gears or stopping or while being towed, or when such vehicle is equipped with commercial free-wheeling devices.

**Sounding Horn.** The horn shall be sounded on approaching sharp curves or other places where view ahead is obstructed, or before passing another vehicle or pedestrians, or, if necessary, before passing riding or driving animals.

**Muffler Cut-Outs.** Muffler cut-outs shall be kept closed at all times.

**Accidents—Stop-Overs.** If vehicles stop because of accidents or for any other reason, they shall be parked immediately in such way as not to interfere with travel on road.

**Reports of Accidents.** All accidents of whatever nature shall be reported as soon as possible by the person or persons involved at nearest ranger station. The Government assumes no responsibility for accidents occurring in the park.

**Intoxication.** No person who is under influence of intoxicating liquor, and no person who is addicted to use of narcotic drugs, shall operate or drive a motor-driven vehicle of any kind on park roads.

**Automobile Restrictions.** The park is open to automobiles operated for pleasure but not those carrying passengers paying either directly or indirectly for use of machines (except automobiles used by transportation lines operating under Government franchise.)

**Boats.** Privately owned boats, canoes, rafts, or other floating craft may be operated upon designated park waters, but only upon permission from the superintendent.

**Motor Trucks.** Motor trucks are subject to special restrictions and special permit fees.

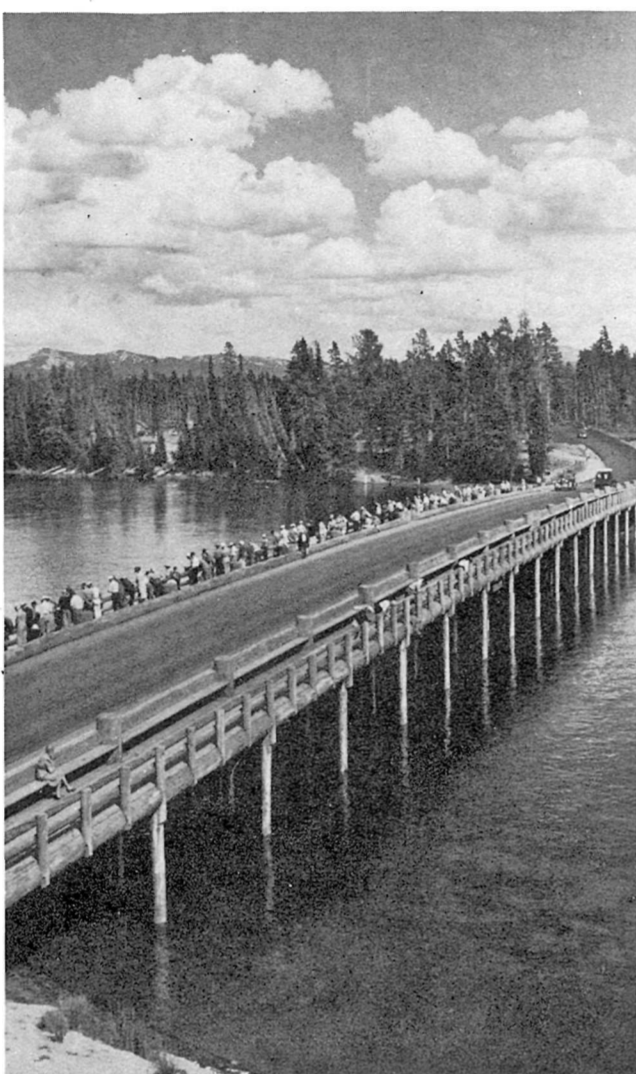
**Fees.** Fees for license to operate motor vehicle are \$3 for automobiles; \$1 for motorcycles; and \$1 for house trailers. These fees include admission also to Grand Teton National Park. The permit must be carried in the car and exhibited to park rangers

on request. It is the responsibility of permittee to retain possession of permit and if lost a new one must be secured by payment of required fee before reentry into park can be made.

**Motorcycles and House Trailers.** Motorcycles and house trailers are admitted to the park under same conditions as automobiles and are subject to same regulations so far as applicable, except that house trailers may be required to occupy separate camping areas. House trailers may be excluded during the winter season when campgrounds are closed.

**One-Way Roads.** Travel over the Mount Washburn Road is limited to one-way travel, beginning at Dunraven Pass.

**Open and Closed Hours for Entrance and Exit Stations.** Information regarding open and closed



Fishing Bridge

food should never be left in automobiles or tents unattended.

**Fishing.** Limit of catch per day by each person fishing and limit of fish in possession at any one time by any one person shall be 15 pounds of fish (dressed weight with heads and tails intact), plus one fish, not to exceed a total of 10 fish, except in certain waters, which are further limited and posted. Use or possession of salmon eggs, or other fish eggs, either fresh or preserved, or live or dead minnows, chubs, or other bait fish, digging of worms, and canning or curing of fish are prohibited. Open season May 30 to October 15, except in special areas.

## Rules and Regulations

[BRIEFED]

**Preservation of Natural Features and Curiosities.** It is forbidden to injure or write upon formations, throw objects into springs or steam vents, or to disturb or carry off any mineral deposits, specimens, natural curiosities, etc., within park. Destruction, injury, or disturbance of trees, flowers, birds, or animals is prohibited.

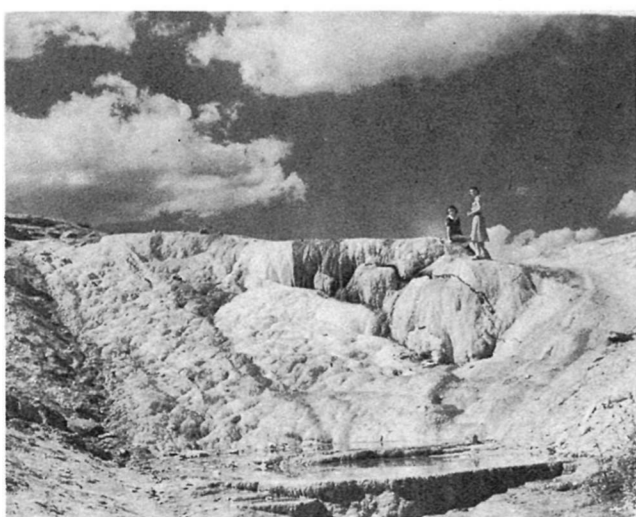
**Camps.** Developed camping sites are available in all sections. Wood for fuel should be taken only from dead or fallen trees. Camping limited to 30 days in any one area.

**Fires.** The park's greatest peril. Kindle them only in designated campgrounds and never near or on roots of trees, dead wood, moss, dry leaves, forest mold, or other vegetable refuse. Campfires should not be left unattended. Before leaving they should be extinguished with water to last spark. **DON'T TAKE CHANCES—MAKE SURE YOUR FIRE IS OUT. ALL FIRES AWAY FROM DESIGNATED CAMPS ARE PROHIBITED, EXCEPT UPON WRITTEN PERMISSION FROM A PARK RANGER.**

**Dogs and Cats.** Dogs and cats are prohibited in park unless on leash, crated, or otherwise under physical restrictive control at all times.

**Hunting.** Hunting within park boundaries is prohibited. Firearms and trapping devices of all kinds must be declared and sealed at park entrance.

**Bears.** It is unlawful and extremely dangerous to feed, molest, tease, or touch bears. If you photograph or approach them closely, you do so at your own risk and peril. To avoid damage from bears,



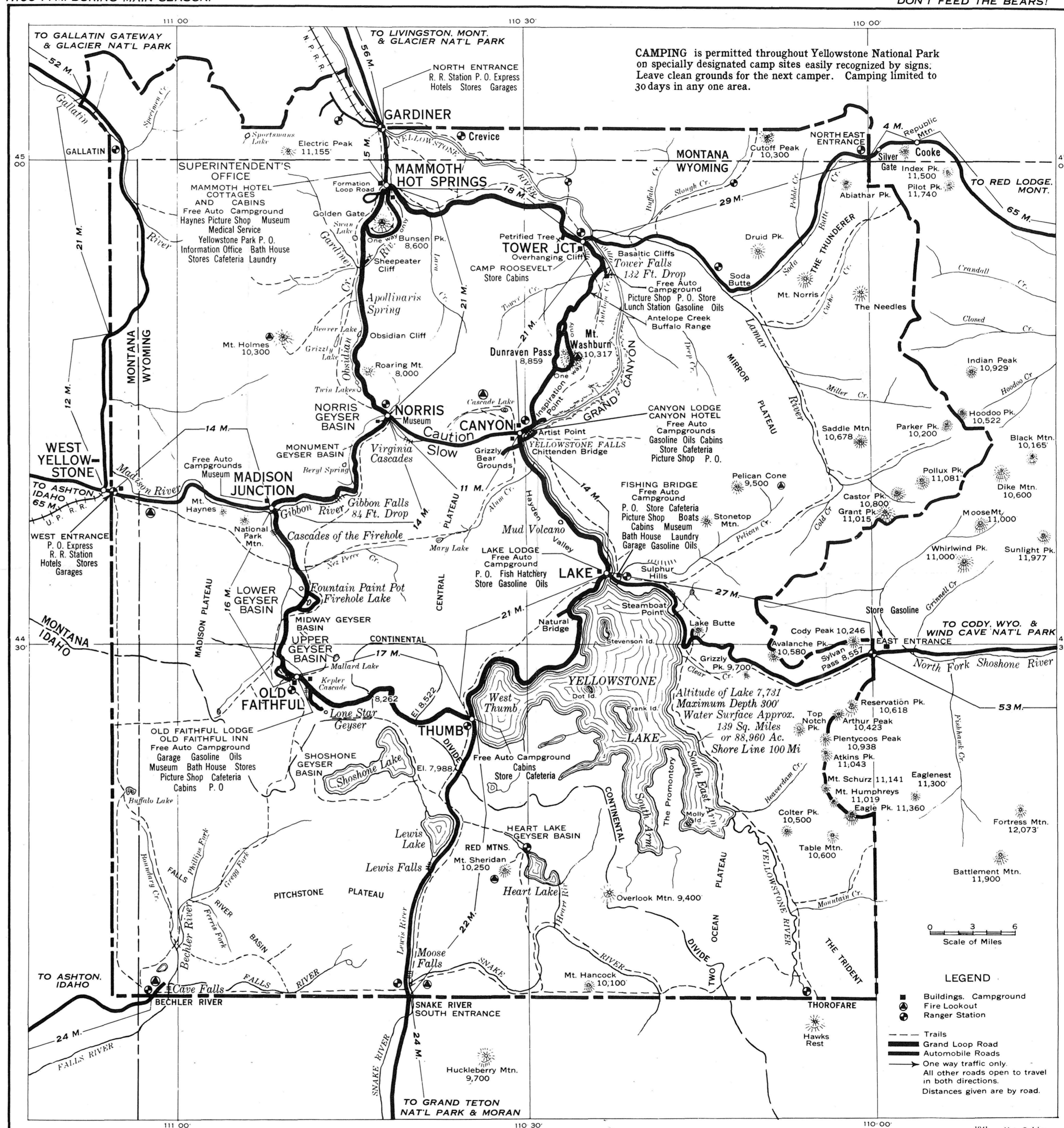
Mammoth Hot Springs Terraces

The Haynes Guide Book of the Yellowstone supplements this circular. It is edited and approved by the National Park Service and is on sale at all points in the park for 50c.

GATES OPEN 6:30 A. M. TO 11:00 P. M. DURING MAIN SEASON.

MAXIMUM SPEED 45 MILES

DON'T FEED THE BEARS!



HELP US PROTECT YOUR GREAT PARK STRICTLY OBSERVE ALL RULES.

GUIDE MAP OF YELLOWSTONE NATIONAL PARK

MAXIMUM SPEED 45 MILES

FIRE IS OUR GREATEST ENEMY BE CAREFUL WITH FIRE IN THE WOODS.