

## Welcome...

to Yellowstone National Park. As seen on the Roosevelt Arch located at the North Entrance to the park, Yellowstone is: "For the Benefit and Enjoyment of the People." This excerpt is taken from the Act of Dedication which established Yellowstone as the world's first National Park and was signed into law on March 1, 1872, by President Ulysses S. Grant.

## Did you know...

### Yellowstone Park has...

the largest concentration of free-roaming wildlife in the lower 48 states and the global temperate zone.

Temperatures range from 10°F mean in January to 55°F mean in July

Record High 98°F  
Lamar Valley (1936)

Record Low -66°F  
Madison Junction (1933)

2 species of bears  
7 species of ungulates  
49+ species other mammals  
18 species of fish  
6 species of reptiles  
4 species of amphibians

Precipitation ranges from 10" at the north boundary to 80" at the southwest corner.

### Yellowstone Lake is...

136 sq. miles of surface area  
110 miles of shoreline  
20 miles north to south  
14 miles east to west  
Average depth: 139 feet

Maximum depth: 390 feet  
Elevation: 7,733 feet  
One of the world's largest calderas (1,316 sq. miles)

### Yellowstone National Park is...

3,472 sq. miles  
2,219,823 acres  
Highest Peak – Eagle Peak (11,358 ft)  
Larger than Rhode Island and Delaware combined

370 miles of paved roads  
5 entrances

6 visitor centers  
1,200 miles of trail  
97 trailheads

300 designated backcountry campsites

200 – 250 active geysers  
2,175 hotel rooms/cabins  
12 campgrounds  
49 picnic areas

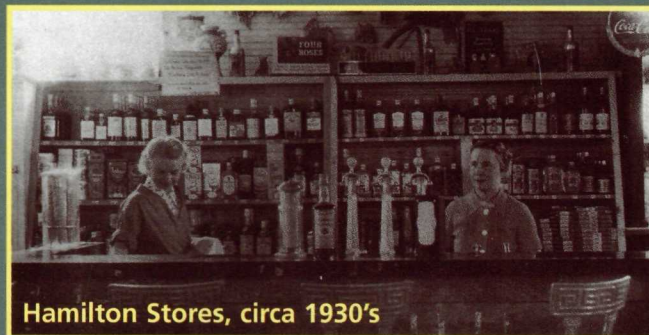
Approximately 10,000 thermal features  
Highest Waterfall: Lower Falls (308 feet)  
Approximately 5% of the park is covered by water.  
Old Faithful Facts: Average Eruption interval is approx. 80 minutes. Height ranges 106 to 184 feet. Duration varies from 1.5 to 5.5 minutes  
95% of visitor use is concentrated about roads & developed areas.

Less than 2% of the total area composing Yellowstone Park, including roads, trails, parking lots, buildings, campgrounds, etc., has been developed.

## "...and a big scoop of strawberry ice cream costs a nickel"

Ice Cream may no longer cost a nickel, but the same standards and philosophy that Charles Hamilton established in 1915 remain true today. We recognize that...

- Without the presence and goodwill of our customers we would have no business.
- We depend upon our customers to exchange their hard earned money with us, and we give equal effort and constant attention to merit this voluntary exchange of valuables.
- The presence of our customers in our place of business is not interruption of our work. Instead, we welcome them and arrange our tasks so as to convenience them. We are pleased they give us opportunity to serve their interests.
- Our customers are not unlike us. Because of this we understand that they sometimes bring their difficulties with them. Where we can help we will, and where we cannot we will not contribute to those difficulties.
- We measure the success of our efforts by the willingness of our customers to return.



Hamilton Stores, circa 1930's

Whether it's information on how to find Old Faithful, where the fish are biting, or where to find the best ice cream in the park, Hamilton Stores is your answer. When you stop in and visit with our friendly staff, take time to view our product selection as well. We offer: groceries, food service, fine gifts and souvenirs, apparel, books, fishing tackle, camping equipment, photo supplies, jewelry and handcraft items and much more.

On your next visit to one of our 14 convenient locations, don't forget to purchase a copy of *Hamilton's Guide to Yellowstone National Park*. Many people enjoy returning to Yellowstone each year to work for Hamilton Stores. If you are interested in joining the Hamilton Family, please contact a Store Manager.

P.O. Box 250  
West Yellowstone, Montana 59758  
(406) 646-7325

Tour Yellowstone On-line at:  
[www.hamiltonstores.com](http://www.hamiltonstores.com)

# YELLOWSTONE NATIONAL PARK

"America's First National Park"



Old Faithful Geyser



Compliments  
of

**HAMILTON STORES INC.**  
EST. 1915  
YELLOWSTONE NATIONAL PARK

Authorized Concessionaire of The National Park Service



# YELLOWSTONE NATIONAL PARK



This moose is 1,000 pounds of wildlife—visible in marshy parts of the Hayden Valley, and many other river and lake areas throughout the park. Please view from a distance

## Wildlife Check-Off List:

- Antelope
- Bald Eagle
- Beaver
- Bighorn Sheep
- Bison (Buffalo)
- Black Bear
- Chipmunk
- Coyote
- Deer
- Elk
- Grizzly Bear
- Marmot
- Moose
- Mountain Lion
- Osprey
- Otter
- Trumpeter Swan
- Wolf

Grand Prismatic, near the Firehole River, is the largest and one of the park's most beautiful thermal features.



**North Entrance**  
Open all year

**Northeast Entrance**  
Road open all year to Cooke City  
Open to Red Lodge approx. June 1 – November 1

**Cooke City**  
**Silver Gate**

Yellowstone bison constitute the largest free roaming herd in North America. The best viewing areas for bison are: Near the Madison and Lamar Rivers as well as the Hayden Valley.



## Thermal Check-Off List:

- Beehive Geyser
- Beryl Spring
- Castle Geyser
- Dragon's Mouth
- Emerald Pool
- Grand Prismatic Spring
- Grotto Geyser
- Lone Star Geyser
- Mineral Terrace
- Morning Glory Pool
- Mud Volcano
- Old Faithful Geyser
- Paint Pots
- Riverside Geyser
- Silex Spring
- Sulphur Caldron
- Terrace Spring



Located on the shore of Yellowstone Lake, Fishing Cone is one of many thermal features found in the West Thumb area.

Just south of Yellowstone, the traveler passes through the John D. Rockefeller Jr. Memorial Parkway and Grand Teton National Park, with its pristine mountains, lakes, streams and pine forests. The same entrance permit is valid for all of these spectacular national parks.





**HAMILTON STORES INC.**

EST. 1915

YELLOWSTONE NATIONAL PARK

# **YELLOWSTONE ON-LINE CATALOG**

<http://www.hamiltonstores.com>

What will you find?

- Exclusive Yellowstone Souvenirs
- Yellowstone Apparel
- Fine Gifts & Memorabilia
- Outdoor Recreation Products
- Home Decor
- Jewelry
- Native American Handcrafts

**We offer various Yellowstone  
links to:**

- Road conditions
- Weather
- Fishing updates
- Campground/hotel
- Employment

**Premieres July 1, 1997**