



Grand Canyon of the Yellowstone
—Easily worth a drive across America to see



Take Time to Ride in Yellowstone

Your 1957 Vacation

As one of the most interesting and truly wonderful places in the United States, Yellowstone National Park justly deserves the affection of so many people who say "Every American should see and enjoy the Yellowstone." Take a cabin at Yellowstone Lake—a magnificent body of water, with a shore line of 100 miles. Fish, row a boat, take a fast launch ride. At Old Faithful, inspect all the geysers, visit the Museum. Let the youngsters do some horseback riding at Mammoth Springs, Old Faithful and Canyon on dependable horses, with cowboy guides. Enjoy the dances and entertainments in Yellowstone every night. Take the walking trips with Ranger Naturalists. Relax at Canyon, Fishing Bridge, Roosevelt Lodge, Mammoth Springs, Old Faithful and Yellowstone Lake.

Items of Information

A fee of \$3 for 15 days is charged by the National Park Service for automobiles entering Yellowstone; or \$6 for entire calendar year. For house trailers: \$3 for 15 days, \$6 for year. Motorcycles: \$1 for 15 days, \$2 for calendar year. (Fees subject to change).

Beauty and barber shops: At Mammoth Springs, Old Faithful, Lake and Canyon Hotels and Lake Lodge.

Cashing Checks: There are no banking facilities in or near Yellowstone Park. As it is not the general policy of the company to cash personal or cashier's checks, we suggest that the guest provide himself with sufficient funds or travelers' cheques.

Church Services: Sundays, June 23 to Aug. 25. Religious services are conducted at convenient locations in the Park. Ask at registry desks, museums or ranger stations.

Clothing: Medium weight, with medium weight sweater or overcoat desirable. Comfortable walking shoes are recommended.

Eating Facilities: Cafeterias are located at Old Faithful, Thumb, Fishing Bridge and Canyon; Coffee Shops at Old Faithful, Lake and Roosevelt Lodges; also at Lake Hotel and Mammoth Springs cottages. Dining Rooms at Mammoth, Old Faithful and Canyon Hotels.

Fishing and Boating—Yellowstone Lake offers the best of fishing. No license required. Rowboats may be rented at lake piers. Fishing tackle can be rented or purchased at the Boat Company office at Thumb, Lake Store and Fishing Bridge Store. Thrill rides on the Lake in high powered speed boats—exciting half hour trips are available. Parties of two or more taken out any time during the day or evening.

Garages and Service Stations: Gasoline and oil available at Mammoth Hot Springs, Old Faithful, Thumb, Lake, Fishing Bridge and Canyon. Garages at Mammoth, Old Faithful, Fishing Bridge and Canyon can handle all ordinary automobile repairs. Large shops near Gardiner, Montana, handle all heavy work.

General stores and service stations are located at Mammoth, Old Faithful, Thumb, Lake, Fishing Bridge, Canyon, Tower Fall (store only). They handle all visitor needs, including fresh fruit, vegetables, meats and groceries.

Gift shops and news stands, all hotels and lodges. **Guide Books:** Haynes' Guide may be ordered direct by mail from Haynes, Inc., Yellowstone Park, Wyo., also on sale at all news stands and picture shops in the Park. U. S. government literature can also be secured at museums and Ranger Stations in the Park.

In Yellowstone

Guide Service: Ranger Naturalists conduct parties at all main points of interest in each locality—a free service to Yellowstone guests.

Laundries: Steam laundry service available at all hotels. Automatic Laundry service at Thumb, Old Faithful and Fishing Bridge.

Medical Service—Hospital maintained at Mammoth Hot Springs is in charge of a competent staff of doctors; and at each hotel and lodge there is a trained nurse to take care of any emergency work. Doctors also located at Old Faithful Inn and Canyon Hotel.

Mail: The main post office in the Park is at Mammoth Hot Springs, Yellowstone Park, Wyo.; branches in Old Faithful, Thumb, Fishing Bridge and Canyon general stores. Mail should be addressed to GENERAL DELIVERY—Mammoth, Old Faithful, Thumb, Fishing Bridge or Canyon, —YELLOWSTONE PARK, WYO., at whatever location addressee intends to stop, and should be called for either at the main post office at Mammoth, or at the branch post offices.

Museums: The National Park Service maintains a museum and information office at Mammoth Hot Springs. There are museums also at Norris Geyser Basin, Madison Junction, Upper Geyser Basin, and at Fishing Bridge; also an information office at West Yellowstone. At all ranger stations and museums throughout the Park visitors can secure authentic information.

National Park Service—The National Park Service, U. S. Department of the Interior, has full jurisdiction over Yellowstone National Park and is represented by a resident Superintendent, whose headquarters are at Mammoth Hot Springs. The National Park Service, of which The Honorable Conrad L. Wirth is Director, has jurisdiction over all national parks.

Park Season—Hotels, June 17 to September 5; Lodges, June 10 to September 10; Campers' Cabins, Cafeterias and service stations, from about May 10 to about October 15, depending upon the weather conditions.

Picture Shops at all centers of the park carry a full line of cameras and photo supplies. Souvenir post cards and pictures of Park for sale.

Saddle horses are available at Mammoth, Old Faithful and Canyon for many scenic rides and short trips. Cowboy guides in charge of horses will gladly give you full information.

Telegraph offices at Hotels. Undelivered telegrams are posted at the post offices and ranger stations and may be called for at the telegraph offices. **Telephones:** Long distance telephone service at Hotels and Lodges.

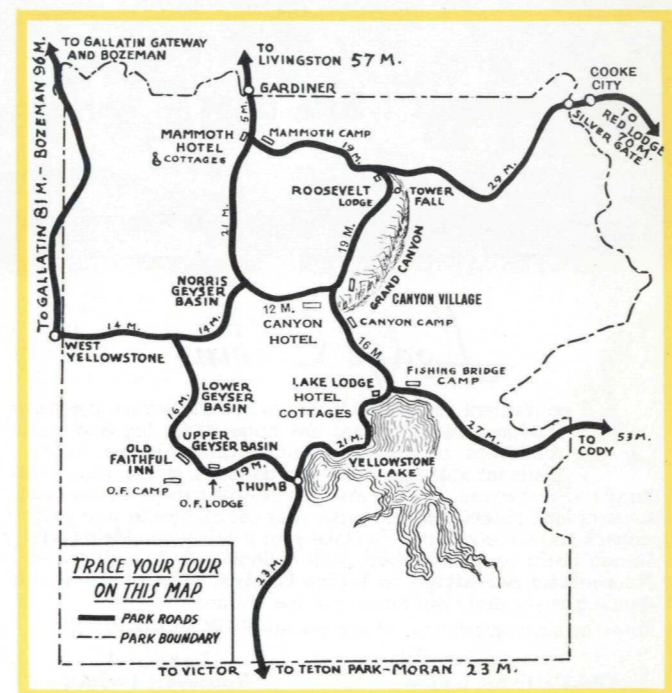
The Yellowstone Park Co. is authorized by the National Park Service, U. S. Department of Interior, to serve the Public in Yellowstone National Park.

Reservations accepted from March 1st. For information, please write to

Yellowstone Park Company
Reservation Department
Yellowstone Park, Wyoming

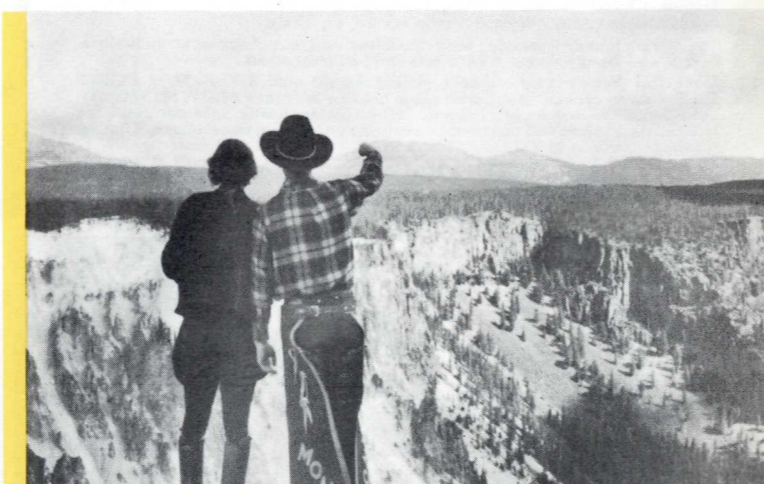
THIS FOLDER ISSUED BY
Yellowstone Park Company
Yellowstone Park, Wyoming

Trace Your Tour on this Map

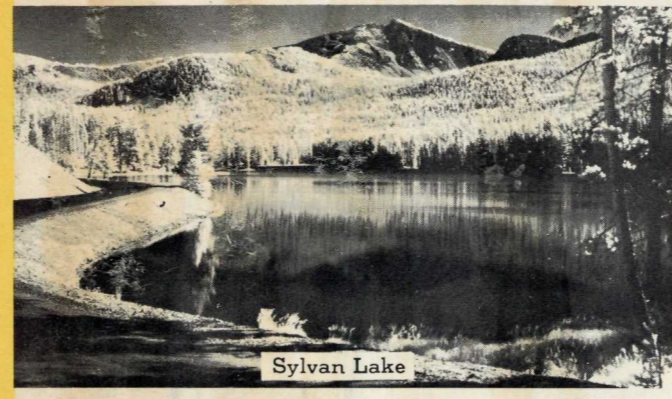


Come to Yellowstone—see for yourself!

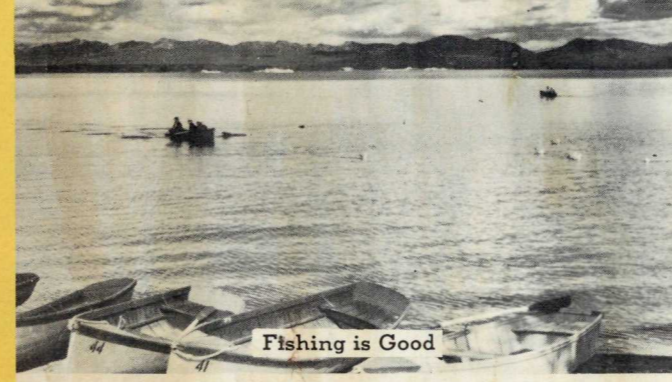
Old Faithful Geyser has faithfully appeared in school books of the world for 85 years. Before that, civilized people did not believe a geyser could be possible. John Colter's story of hot waters in Yellowstone was laughed at by the public of 1808. Jim Bridger's description of geysers in 1830 made a national reputation for him as a liar. Beginning after the Civil War, America started to admit that the wonders of Yellowstone really existed. Even today, many say "I'll believe it when I see it myself."



Cottages, Mammoth



Sylvan Lake



Fishing is Good



New Terrace, Mammoth

Yellowstone National Park



HOTELS—COTTAGES—LODGES—TOURIST CABINS
FOR MOTORISTS

FOLDER B—1957



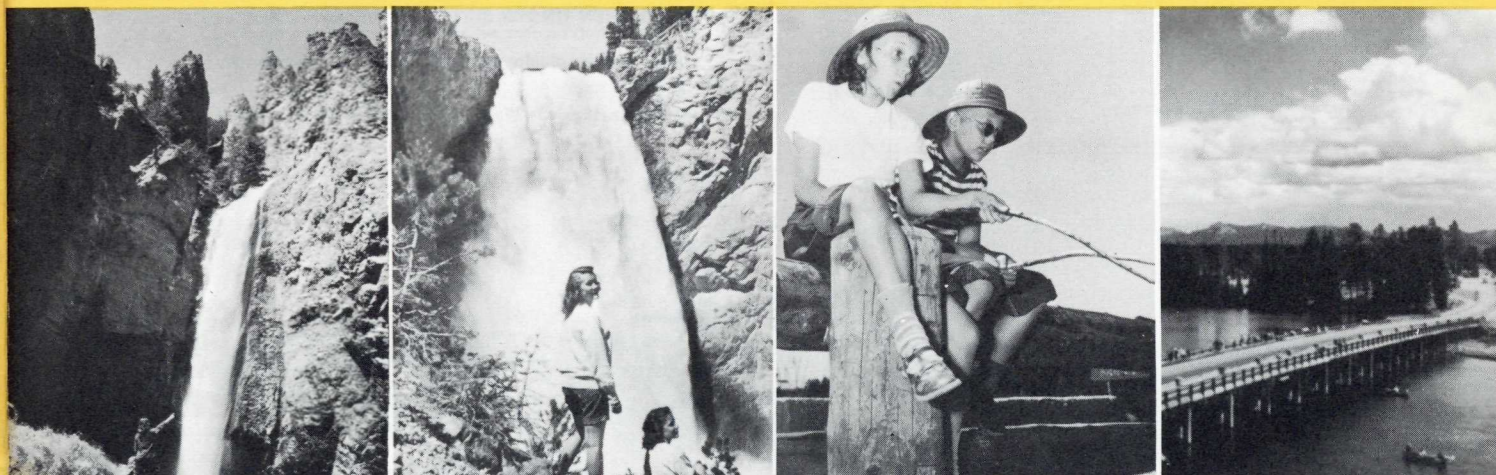
Yellowstone National Park—For Motorists

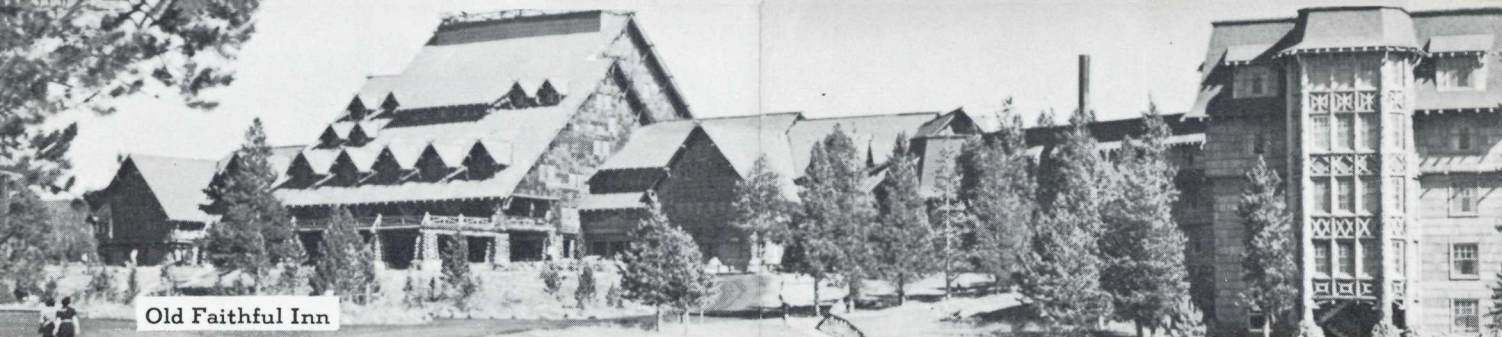
If you enjoy motoring on good roads, you'll like Yellowstone National Park. The highways of the Yellowstone are as inviting and pleasant to drive over as any roads in this country. Mountain grades have been leveled, curves and straightaways widened. Now Yellowstone is ready for the automobile vacationists of the United States, Canada and Mexico. Come this summer. You'll be welcomed.

Look at any map of the United States. You will find Yellowstone National Park in northwestern Wyoming, amid high peaks of the Rocky Mountains. The Park overlaps Montana on the north and northwest and Idaho on the southwest. It is the largest of the national parks, enclosing 3,472 square miles of scenic natural wonders.

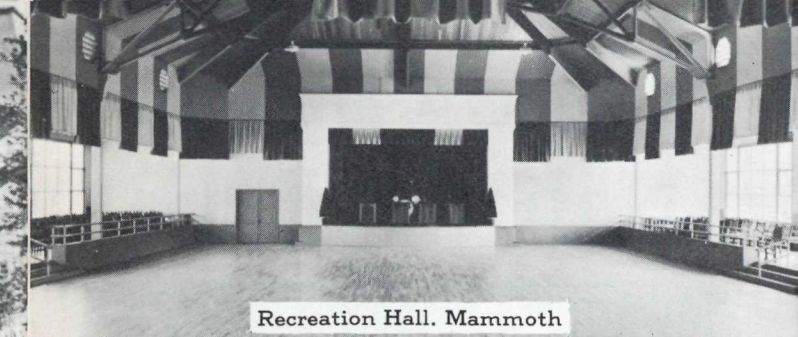
What's the best way to reach Yellowstone? Your automobile club, your service station man, or your travel bureau can supply you with a dependable road map right from your home city. Many hotels and chambers of commerce also distribute maps for tourists. State highway departments will coach you, if you wish. But it is hard to go wrong on the modern system of hard-surfaced highways leading to all important cities and tourist attractions in the nation. And the roads to Yellowstone are among the best—easy to find, easy to ride on. When you reach Yellowstone itself, you'll exclaim, "What a paradise for the motorist on vacation!"

Reservations will be accepted from March 1. Please write to Yellowstone Park Company, Reservation Department, Yellowstone Park, Wyoming.





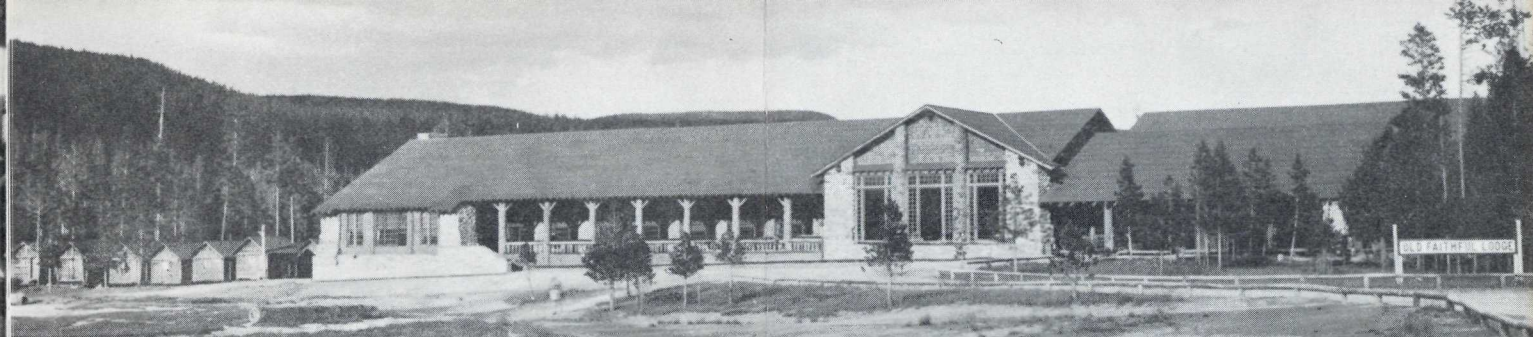
Old Faithful Inn



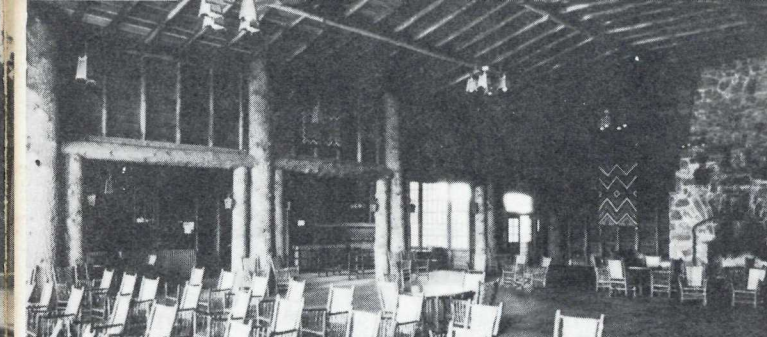
Recreation Hall, Mammoth



Recreation Hall, Old Faithful



Old Faithful Lodge



Lodges Have Large Sitting Rooms



Cafeteria, Old Faithful Cabins

Hotels and Cottages

YOU will enjoy the comforts and hospitality of the splendid hotels in Yellowstone Park: Mammoth Springs Hotel and Cottages, Old Faithful Inn, Lake Hotel and Cottages and Canyon Hotel. All hotels are completely protected by Grinnell Sprinkler Systems. They have luxurious lobbies and beautiful dining rooms, where wholesome meals are served. Guest rooms are large and comfortable, attractively furnished, steam heated, and all have hot and cold running water. Private baths are limited.

Barber and Beauty shops, cocktail rooms, buffets, long distance telephones and telegraph, laundry, tailor, cleaning service, recreation halls and music for dancing are provided for you. Reservations may be made on the European Plan at all hotels. At Old Faithful Inn and Canyon Hotel, arrangements may be made on arrival for accommodations on the American Plan, in which case meals are charged for from the time of registering to the time of checking out, whether eaten or not. During heavy travel, visitors traveling alone may occasionally be asked to share a room.

Deposits: Reservations are held without deposit until 4:00 P. M. of **FIRST DAY** of stated arrival. If you wish space held for later than 4:00 P. M., you may send deposit of first night's lodging. Minimum applicable rate per night for LODGING for party will be stated on confirmation of room reservations. Checks should be payable to YELLOWSTONE PARK COMPANY and should reach us at least 2 weeks in advance of arrival date. Deposits good only at locations named and are non-negotiable. No refunds can be made on prepaid reservations, unless space is released before noon of first day of stated arrival. Check-out hour 11:00 A. M.

Pets: Must be on leash. Not permitted in hotels, but arrangements may be made with head porter for their care.

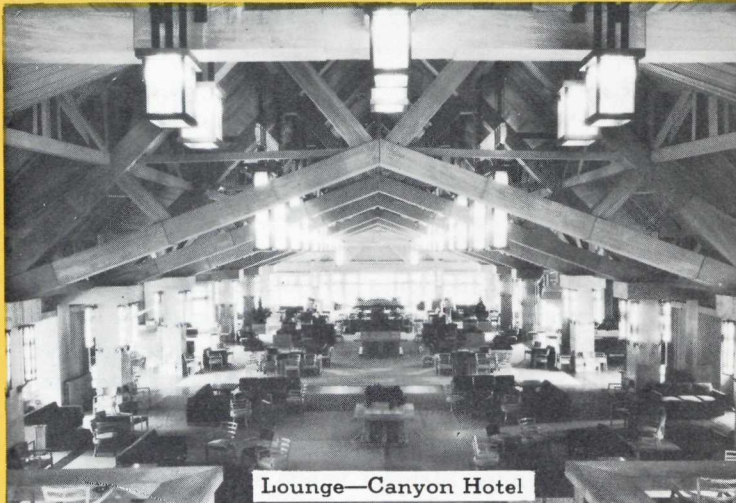
DAILY RATES AT HOTELS
AMERICAN PLAN (3 meals and lodging): RATE PER DAY FOR PARTY
Mammoth, Old Faithful and Canyon Hotels: Without Bath With Bath

ONE ROOM:	Without Bath	With Bath
1 person	\$11.85	\$14.35 & \$15.35
2 persons	20.70	23.70 & 24.70
3 persons	29.05	34.05 & 35.55
4 persons	37.40	

TWO ROOMS, bath between:

2 persons	28.70 & 30.70
3 persons	38.05 & 40.05
4 persons	46.40 & 47.40

*Children 3 years and under 8 when occupying room with adults - - - - - 5.25 5.75



Lounge—Canyon Hotel

EUROPEAN PLAN (Rooms only): Mammoth, Old Faithful, Lake and Canyon Hotels:

ONE ROOM:	Without Bath	With Bath
1 person	\$ 5.50	\$ 8.00 & \$ 9.00
2 persons	8.00	11.50 & 12.50
3 persons	10.00	16.05 & 17.55
4 persons	12.00	

TWO ROOMS, bath between:

2 persons	16.00 & 18.00
3 persons	19.50 & 21.50
4 persons	22.00 & 24.00

*Children 3 years and under 8 years when occupying room with adults - - - - - 2.00 2.50

*CHILDREN UNDER 3 YEARS: Any service requested at hotels or hotel cottages will be charged for on basis of service rendered.

xFull rates for children under 8, occupying separate rooms.

Detached Bath - - - - - each person .35

Rates do not include Wyoming sales tax of 2% on value of meals.

Hotel Cottages

Cottages, with and without showers, are operated in connection with Mammoth Springs Hotel and with Lake Hotel, but are not available at other Park locations. **No cooking is permitted.** Meals available in Mammoth Springs Terrace Grill (coffee shop) and in main dining room; at the Lake location, in Lake Hotel Coffee Shop. Rates for cottage accommodations are as follows and DO NOT INCLUDE MEALS. Rates quoted for children under 8, apply when children occupy a room with adults. Full rates apply for children under 8 occupying separate rooms:

Mammoth Hotel Cottages:

Furnished cottage room:	DOUBLE BED, running hot and cold water:	Per Day For Party
1 person		\$ 3.75
2 persons		5.00
3 persons (with addition of cot)		6.50
Children, 3 years and under 8 years, each		1.00

Furnished cottage room: TWIN BEDS, running hot and cold water:

1 person	4.50
2 persons	6.00
3 persons (with cot)	7.50
Children, 3 years and under 8 years, each	1.00

Furnished cottage room (or rooms), TWIN BEDS, SHOWER, LAVATORY AND TOILET:

One room:	
1 person	7.50
2 persons	10.00
3 persons (with cot)	12.50
Children, 3 years and under 8 years, each	1.50
Two rooms, with shower bath between:	
2 persons	15.00
3 persons	17.50
4 persons	20.00
Children, 3 years and under 8 years, each	1.50

Lake Hotel, Cottages: (Size of rooms does not permit use of cots)

Furnished cottages, 2 rooms, shower bath between rooms, each furnished with 1 double and 1 single bed, toilet and lavatory.

One room, without shower, but with toilet and lavatory:

1 person	6.00
2 persons	8.00
3 persons	10.00
Children, 3 years and under 8 years, each	1.25

One room, with shower:

1 person	7.50
2 persons	10.00
3 persons	12.50
Children, 3 years and under 8 years, each	1.50

Two rooms, shower bath between, toilet and lavatory in each room:

2 persons	15.00
3 persons	17.50
4 persons	20.00
Children, 3 years and under 8 years, each	1.50

MEALS: All meals in main dining rooms at hotels are table d'hote:

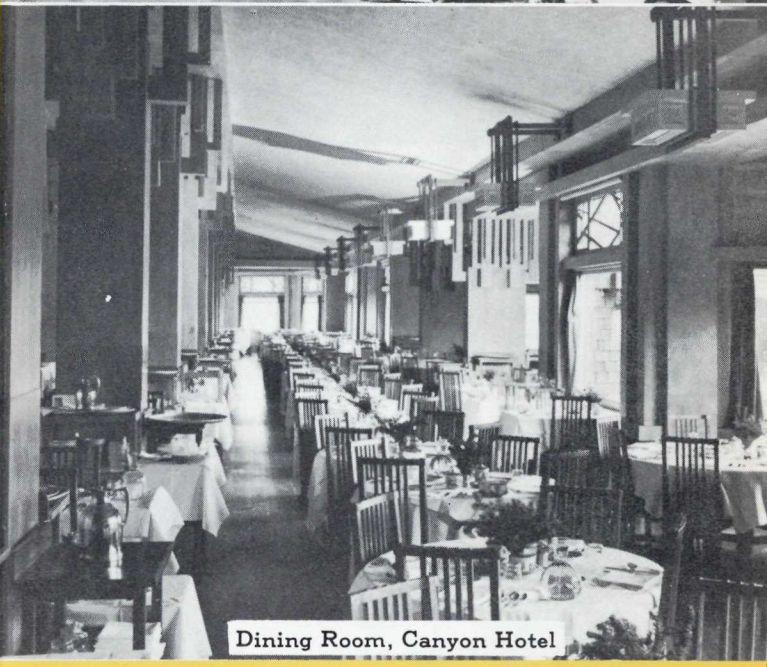
Adults and children over 8 years of age	Breakfast	Lunch	Dinner
	\$1.35	\$2.25	\$3.25
Children, 3 years and under 8 years	.75	1.25	1.75

Rates do not include Wyoming sales tax of 2% on value of meals.

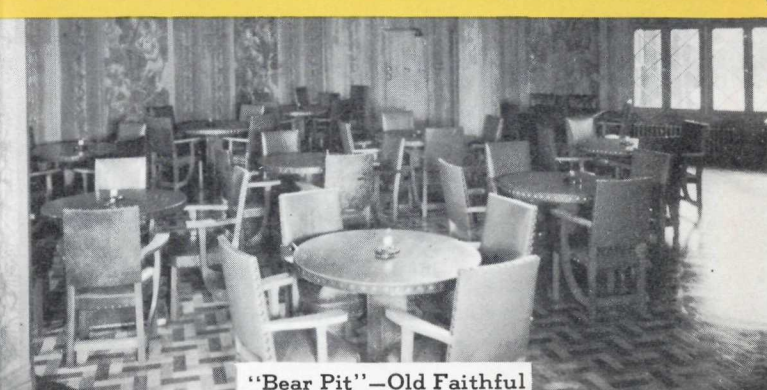
CHILDREN UNDER 3 YEARS: Any service requested at hotels or hotel cottages will be charged for on basis of service rendered.



Mammoth Springs Hotel



Dining Room, Canyon Hotel



"Bear Pit"—Old Faithful

Lodge Cabins

AT convenient and scenic locations in Yellowstone, there are Lodges. Main Lodges are huge rustic log and stone buildings, containing attractive dining rooms, lobbies, halls for entertainments and dancing, stores, soda fountains and rest rooms. Nearby are comfortable cabins for one, two, three or four guests. You can drive your car alongside your cabin, unpack and there you are. You take your meals in the Main Lodge, Dining Room or Coffee Shop, with college girls to wait on you. **No cooking permitted in Lodge Cabins.** Entertainment and dancing every night but Sunday at the Lodges.

Rates for accommodations at Lodges are EUROPEAN PLAN:

Old Faithful Lodge

These cabins have hot and cold running water, inner-spring mattresses, electric lights, heating stoves and other comfortable furnishings. Rate includes maid and bellboy service.

Per Day, Per Cabin	Per Day, Per Cabin
1 person - - - - - \$3.50	1 person - - - - - \$2.25
2 persons - \$5.00 and \$5.25	2 persons - \$3.75 and \$4.00
3 persons - 6.50 and 6.75	3 persons - 5.25 and 5.50
4 persons - - - - - 7.75	4 persons - - - - - 6.50
Each additional person, \$1.00	Each additional person, \$1.00
Detached bath - - - - -	Detached bath - - - - - 35c per person

Lake and Roosevelt Lodges

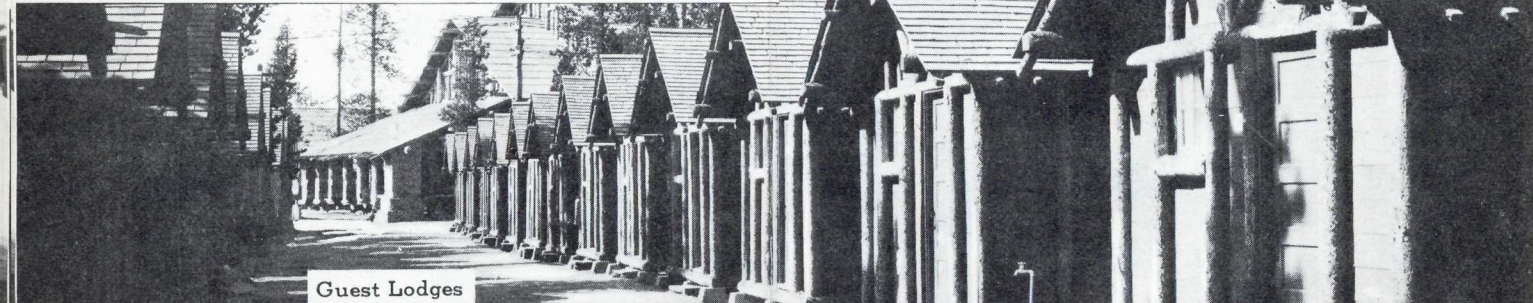
These cabins do not have running water, but have inner-spring mattresses, electric lights, heating stoves and other comfortable furnishings. Rate includes maid and bellboy service.

Per Day, Per Cabin	Per Day, Per Cabin
1 person - - - - - \$3.50	1 person - - - - - \$2.25
2 persons - \$5.00 and \$5.25	2 persons - \$3.75 and \$4.00
3 persons - 6.50 and 6.75	3 persons - 5.25 and 5.50
4 persons - - - - - 7.75	4 persons - - - - - 6.50
Each additional person, \$1.00	Each additional person, \$1.00
Detached bath - - - - -	Detached bath - - - - - 35c per person

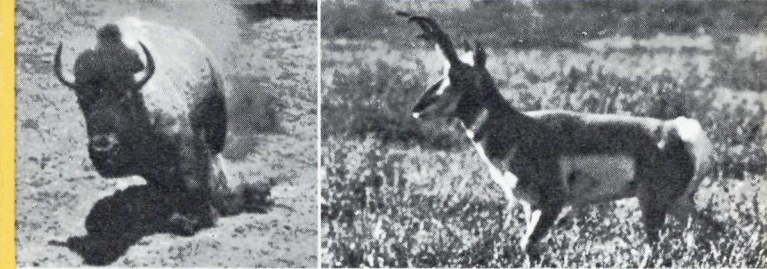
4 MEALS: Table d'hote service and coffee shops at Old Faithful, Lake and Roosevelt Lodges. Reasonable prices. Wyoming sales tax 2% on meals. Telephone, laundry service, soda fountains and curio stores at all lodges. Barber and Beauty Shops at Lake and Old Faithful Lodges.

Deposits: Reservations are held without deposit until 4:00 P. M. of **FIRST DAY** of stated arrival. If you wish space held for later than 4:00 P. M., you may send deposit of first night's lodging. Minimum applicable rate per night for LODGING for party will be stated on confirmation of room reservations. Checks should be payable to YELLOWSTONE PARK COMPANY and should reach us at least 2 weeks in advance of arrival date. Deposits good only at locations named and are non-negotiable. No refunds can be made on prepaid reservations, unless space is released before noon of **First Day** of stated arrival.

(Check-out Hour 11:00 A. M.)



Guest Lodges



Terrace Grill at Mammoth

Tourist Cabins

Tourist cabin groups have headquarters buildings, where you register and are assigned cabins. Each area has many log and frame cabins and attractive cafeterias, where wholesome food is served at moderate prices.

Cooking is permitted and cooking utensils and bedding may be rented at the central office.

OLD FAITHFUL AND FISHING BRIDGE TOURIST CABINS

(Check-out Hour 11:00 A. M.)

Prices for partially-furnished cabins, **not including bedding**, or maid and bellboy service, but including cold running water and sinks, are as follows:

ONE-ROOM CABINS: equipped with 1 double bedstead, bed spring, mattress, mattress cover, stove, washstand, table, bench mirror, slop jar, wash basin, pitcher, teakettle, per day:

1 person	\$1.75
2 persons	2.00
Each additional person or cot	.50

ONE-ROOM CABINS: equipped with one double bedstead, bed spring, mattress; single bedstead, bed spring, mattress; 2 mattress covers, stove, washstand, table, 2 benches, mirror, slop jar, wash basin, pitcher, teakettle, per day:

2 persons	\$2.25
3 persons	2.50
Each additional person or cot	.50

ONE-ROOM CABINS: equipped with 2 double bedsteads, 2 bed springs, 2 mattresses, 2 mattress covers, 1 stove, 2 washstands, 2 tables, 2 benches, 2 mirrors, one slop jar, wash basin, pitcher, teakettle, per day:

2 persons	\$2.50
3 persons	2.75
4 persons	3.00
Each additional person or cot	.50

At Old Faithful and Fishing Bridge only, cabins partially equipped, similar to the above but with sinks and running water in kitchens, but not including bedding, linens, cooking utensils or dishes, or maid and bellboy service, are available at the following rates:

Two-Room Cabins (Bedroom and Kitchen):

1 or 2 persons, per day	\$3.25
Each additional person or cot	.50

Three-Room Cabins (2 Bedrooms and Kitchen):

2, 3 or 4 persons, per day	\$4.75
Each additional person or cot	.50

FURNISHED ONE-ROOM Tourist Cabins, equipped with bedding and linens and including maid and bellboy service, with cooking permitted, are 25c per day per cabin less than rates for Old Faithful Lodge.

CANYON VILLAGE
New Canyon Village opens July 1. Lodge, with all services available, and 500 modern motel units, with hot water, heat and showers:

1 person	\$10.00	3 persons	\$15.00
2 persons	12.00	4 persons	17.00

CANYON, MAMMOTH AND THUMB TOURIST CABINS

(Check-out Hour 11:00 A. M.)

Prices for partially-furnished cabins, **not including bedding**, or maid and bellboy service, but including cold running water, are as follows:

ONE-ROOM CABINS: equipped with 1 double bedstead, bed spring, mattress, mattress cover, stove, washstand, table, bench mirror, slop jar, wash basin, pitcher, teakettle, per day:

1 person	\$1.50
2 persons	1.75
Each additional person or cot	.50

ONE-ROOM CABINS: equipped with one double bedstead, bed spring, mattress; single bedstead, bed spring, mattress; 2 mattress covers, stove, washstand, table, 2 benches, mirror, slop jar, wash basin, pitcher, teakettle, per day:

2 persons	\$2.00
3 persons	2.25
Each additional person or cot	.50

ONE-ROOM CABINS: equipped with 2 double bedsteads, 2 bed springs, 2 mattresses, 2 mattress covers, 1 stove, 2 washstands, 2 tables, 2 benches, 2 mirrors, one slop jar, wash basin, pitcher, teakettle, per day:

2 persons	\$2.25
3 persons	2.50
4 persons	2.75
Each additional person or cot	.50

FURNISHED ONE-ROOM Tourist Cabins, equipped with bedding and linens and including maid and bellboy service, with cooking permitted, are the same rates as those for Lake Lodge.

Deposits: Reservations are held without deposit until 4:00 P. M. of **FIRST DAY** of stated arrival. If you wish space held for later than 4:00 P. M., you may send deposit of first night's lodging. Minimum applicable rate per night for LODGING for party will be stated on confirmation of room reservations. Checks should be payable to YELLOWSTONE PARK COMPANY and should reach us at least 2 weeks in advance of arrival date. Deposits good only at locations named and are non-negotiable. No refunds can be made on prepaid reservations, unless space is released before noon of **First Day** of stated arrival.