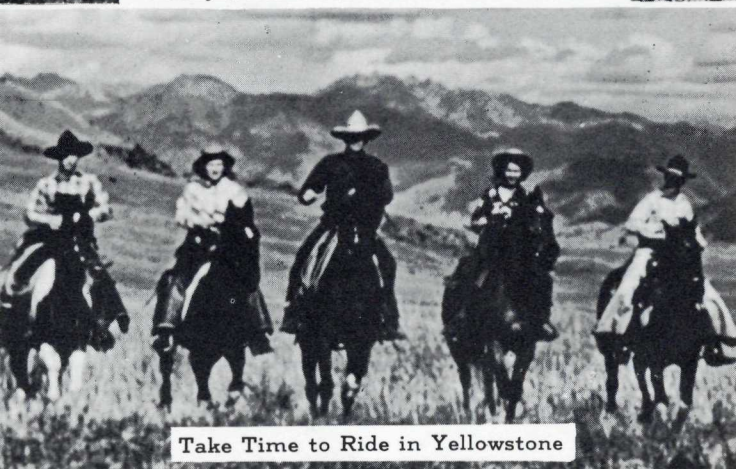




Grand Canyon of the Yellowstone
—Easily worth a drive across America to see



Take Time to Ride in Yellowstone

Your 1958 Vacation

As one of the most interesting and truly wonderful places in the United States, Yellowstone National Park justly deserves the affection of so many people who say "Every American should see and enjoy the Yellowstone." Take a cabin at Yellowstone Lake—a magnificent body of water, with a shore line of 100 miles. Fish, row a boat, take a fast launch ride. At Old Faithful, inspect all the geysers, visit the Visitor Center. Let the youngsters do some horseback riding at Mammoth Springs, Old Faithful and Canyon on dependable horses, with cowboy guides. Enjoy the dances and entertainments in Yellowstone every night. Take the walking trips with Ranger Naturalists. Relax at Canyon, Fishing Bridge, Roosevelt Lodge, Mammoth Springs, Old Faithful and Yellowstone Lake.

Items of Information

A fee of \$3 for 15 days is charged by the National Park Service for automobiles entering Yellowstone; or \$6 for entire calendar year. For house trailers: \$3 for 15 days, \$6 for year. Motorcycles: \$1 for 15 days, \$2 for calendar year. (Fees subject to change).

Beauty and Barber Shops: At Mammoth Springs, Old Faithful, Lake and Canyon Hotels and at Canyon Village; also, at Old Faithful Lodge. Barber shop at Lake Lodge.

Cashing Checks: There are no banking facilities in or near Yellowstone Park. As it is not the general policy of the company to cash personal or cashier's checks, we suggest that the guest provide himself with sufficient funds or travelers' cheques.

Church Services: Sundays, June 22 to Aug. 24. Religious services are conducted at convenient locations in the Park. Ask at registry desks, visitor centers or ranger stations.

Clothing: Medium weight, with medium weight sweater or overcoat desirable. Comfortable walking shoes are recommended.

Eating Facilities: Cafeterias are located at Old Faithful, Thumb, Fishing Bridge and Canyon Village; Coffee Shops at Old Faithful and Roosevelt Lodges; also at Canyon Village, Lake Hotel and Mammoth Springs Cottages. Dining rooms at Mammoth, Old Faithful, Canyon Hotels and at Canyon Village.

Fishing and Boating—Yellowstone Lake offers the best of fishing. No license required. Rowboats may be rented at lake piers. Fishing tackle can be rented or purchased at the Boat Company office at Thumb, Lake Store and Fishing Bridge Store. Thrill rides on the Lake in high powered speed boats—exciting half hour trips are available. Parties of two or more taken out any time during the day or evening.

Garages and Service Stations: Gasoline and oil available at Mammoth Hot Springs, Old Faithful, Thumb, Lake, Fishing Bridge and Canyon. Garages at Mammoth, Old Faithful, Fishing Bridge and Canyon can handle all ordinary automobile repairs. Large shops near Gardiner, Montana, handle all heavy work.

General stores are located at Mammoth, Old Faithful, Thumb, Lake, Fishing Bridge, Canyon, Tower Fall. They handle all visitor needs, including fresh fruit, vegetables, meats and groceries.

Gift shops and news stands, all hotels and lodges. **Guide Books:** Haynes Guide may be ordered direct by mail from Haynes Inc., Yellowstone Park, Wyo., also on sale at all news stands and picture shops in the Park. U. S. government literature can also be secured at visitor centers and Ranger Stations in the Park.

In Yellowstone

Guide Service: Ranger Naturalists conduct parties at all main points of interest in each locality—a free service to Yellowstone guests.

Laundries: Steam laundry service available at all hotels and at Canyon Village. Automatic Laundry service at Thumb, Old Faithful and Fishing Bridge.

Medical Service—Hospital maintained at Mammoth Hot Springs is in charge of a competent staff of doctors; and at each hotel and lodge there is a trained nurse to take care of any emergency work. Doctors also located at Old Faithful Inn and Canyon Hotel.

Mail: The main post office in the Park is at Mammoth Hot Springs, Yellowstone Park, Wyo.; branches in Old Faithful, Thumb, Fishing Bridge general stores and at Canyon Village. Mail should be addressed to GENERAL DELIVERY—Mammoth, Old Faithful, Thumb, Fishing Bridge or Canyon, —YELLOWSTONE PARK, WYO., at whatever location addressee intends to stop, and should be called for either at the main post office at Mammoth, or at the branch post offices.

National Park Service—The National Park Service, U. S. Department of the Interior, has full jurisdiction over Yellowstone National Park and is represented by a resident Superintendent, whose headquarters are at Mammoth Hot Springs. The National Park Service, of which The Honorable Conrad L. Wirth is Director, has jurisdiction over all national parks.

Park Season—Hotels, June 16 to September 4; Lodges, May 24 to September 10; and, depending upon weather conditions, Canyon Village May 15 to October 1 and Campers' Cabins, Cafeterias and service stations, from about May 10 to about October 15.

Picture Shops at all centers of the park carry a full line of cameras and photo supplies. Souvenir post cards and pictures of Park for sale.

Saddle horses are available at Mammoth, Old Faithful and Canyon for many scenic rides and short trips. Cowboy guides in charge of horses will gladly give you full information.

Telegraph offices at Hotels. Undelivered telegrams are posted at the post offices and ranger stations and may be called for at the telegraph offices. **Telephones:** Long distance telephone service at Hotels and Lodges. **Teletype:** TWX Mammoth, Wyoming 3901.

Visitor Centers: The National Park Service maintains a visitor center and information office at Mammoth Hot Springs. There are visitor centers also at Norris Geyser Basin, Madison Junction, Upper Geyser Basin, and at Fishing Bridge; also an information office at West Yellowstone. At all ranger stations and visitor centers throughout the Park visitors can secure authentic information.

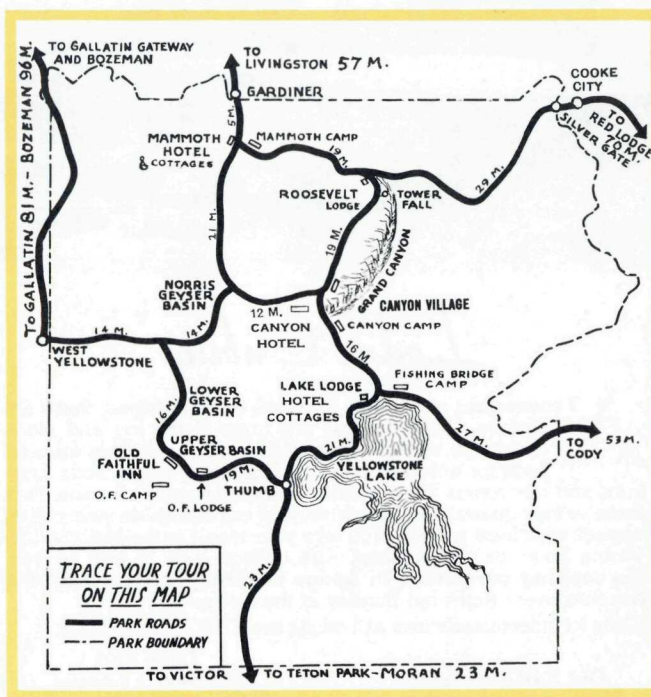
The Yellowstone Park Co. is authorized by the National Park Service, U. S. Department of Interior, to serve the Public in Yellowstone National Park.

Reservations accepted from February 1st. For information, please write to

Yellowstone Park Company
Reservation Department
Yellowstone Park, Wyoming

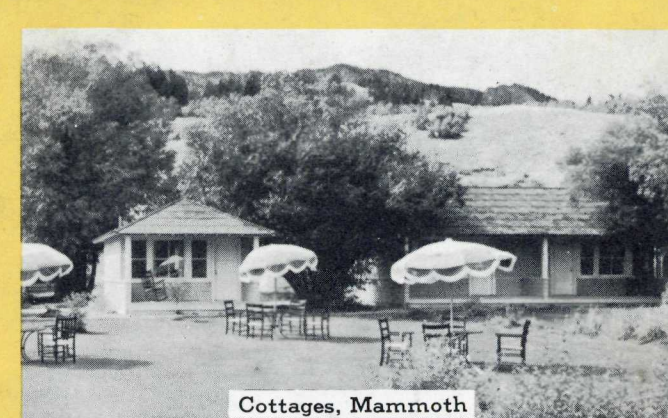
THIS FOLDER ISSUED BY
Yellowstone Park Company
Yellowstone Park, Wyoming

Trace Your Tour on this Map

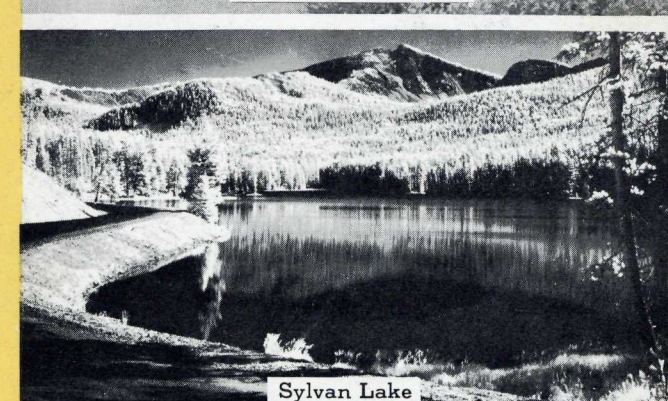


Attractive New Canyon Village!

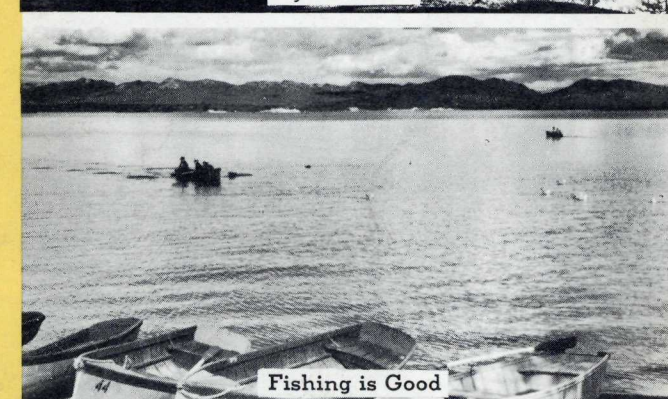
Completed last year at a cost of almost ten million dollars, this entirely new development offers visitors every comfort and convenience. The massive main lodge is of contemporary-rustic design and contains a lounge, dining room, coffee shop, cafeteria, cocktail lounge and picture, gift, barber and beauty shops. Nestled among the towering pines are 500 modern motel-type units, all with hot water, heat and showers. Also in the area are a large general mercantile store, service station, camp ground and government buildings. The village is only about a mile from the inspiring beauty of Yellowstone's Grand Canyon.



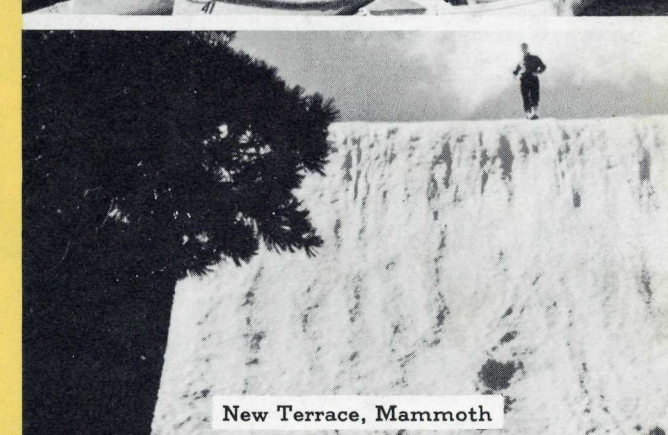
Cottages, Mammoth



Sylvan Lake



Fishing is Good



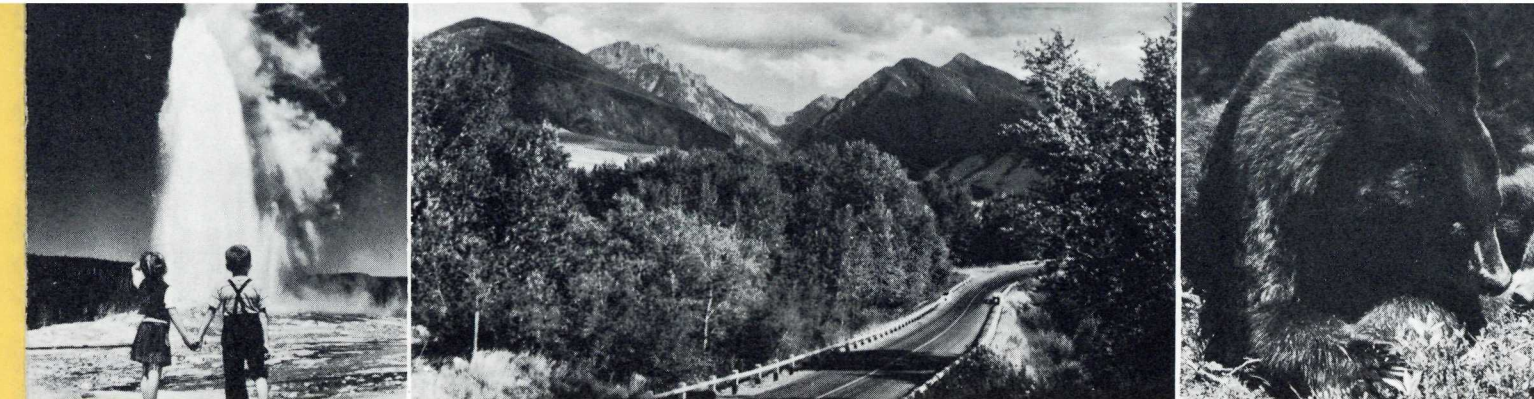
New Terrace, Mammoth

Yellowstone National Park



HOTELS—COTTAGES—LODGES—CAMPER'S CABINS
FOR MOTORISTS

FOLDER B—1958



Yellowstone National Park—For Motorists

WHEREVER you've been, whatever you've seen, you're sure to agree nothing can compare with the wonders of fabulous Yellowstone National Park!

You'll see many changes this year when you drive into the nation's oldest and largest natural playground. Private enterprise and the federal government have teamed up in a ten-year expansion program, designed to increase facilities to take care of the terrific influx of visitors.

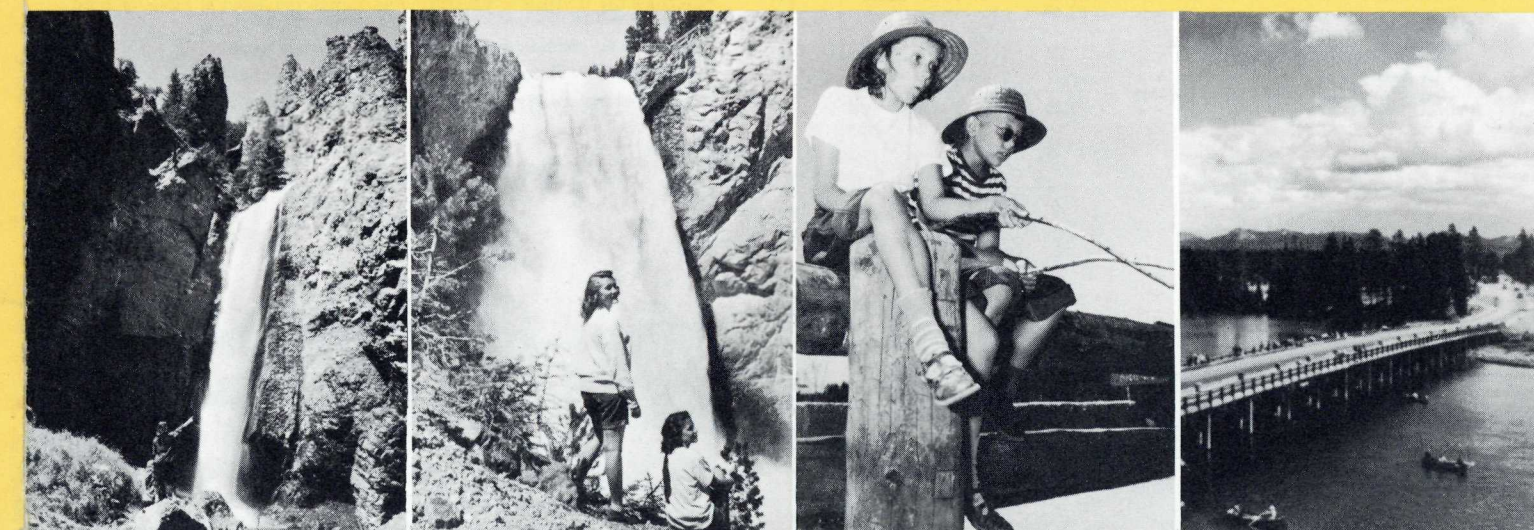
So far, "MISSION 66"—that's what the program is called—has resulted in the completion of the modern, new ten-million-dollar Canyon Village, new campgrounds, trailer areas, roads and other improvements creating additional convenience and comfort for visitors.

Bring your family and plan to spend ample time in the Park. It's big—3472 square miles—and you can't see it all in a day or two. There's so much to see and

do for every member of the family, you may be disappointed if you haven't allowed sufficient time. Above all, have a wonderful, relaxed vacation while you're here in this magnificent wonderland!

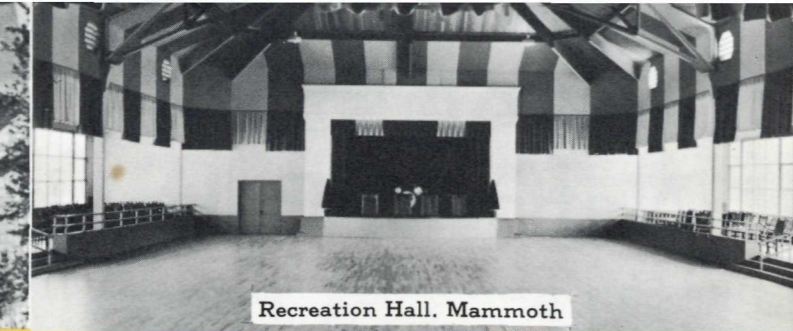
What's the best way to reach Yellowstone? Your automobile club, your service station man, or your travel bureau can supply you with a dependable road map right from your home city. Many hotels and chambers of commerce also distribute maps for tourists. State highway departments will coach you, if you wish. But it is hard to go wrong on the modern system of hard-surfaced highways leading to all important cities and tourist attractions in the nation. The roads to Yellowstone are among the best—easy to find, easy to drive.

Reservations are accepted from February 1. Please write to Yellowstone Park Company, Reservation Department, Yellowstone Park, Wyoming.

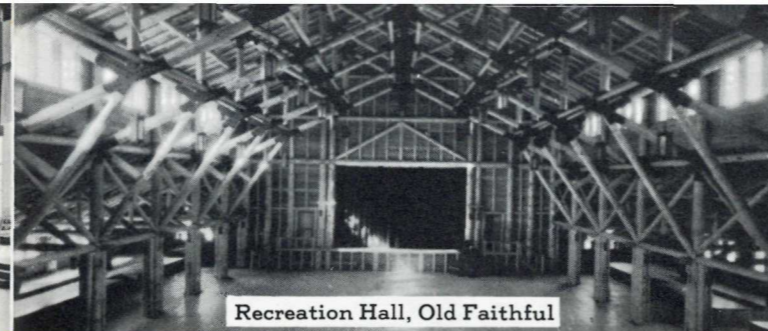




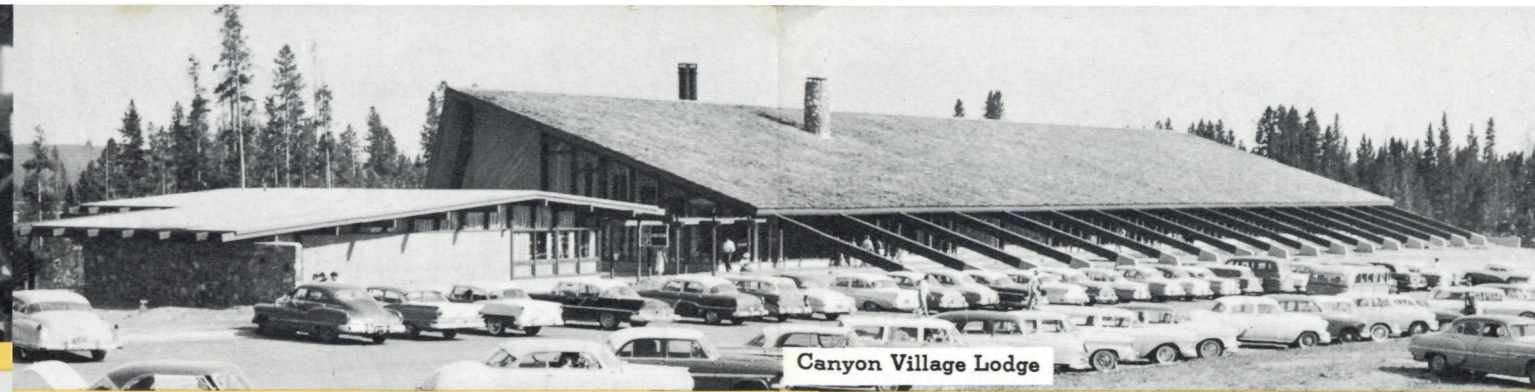
Old Faithful Inn



Recreation Hall, Mammoth



Recreation Hall, Old Faithful



Canyon Village Lodge



Lodges Have Large Sitting Rooms



Cafeteria, Old Faithful Cabins

Hotels and Cottages

YOU will enjoy the comforts and hospitality of the splendid hotels in Yellowstone Park: Mammoth Springs Hotel and Cottages, Old Faithful Inn, Lake Hotel and Cottages and Canyon Hotel. All hotels are completely protected by Grinnell Sprinkler Systems. They have attractive lobbies and beautiful dining rooms, where wholesome meals are served. Guest rooms are large and comfortable, attractively furnished, steam heated, and all have hot and cold running water. Private baths are limited.

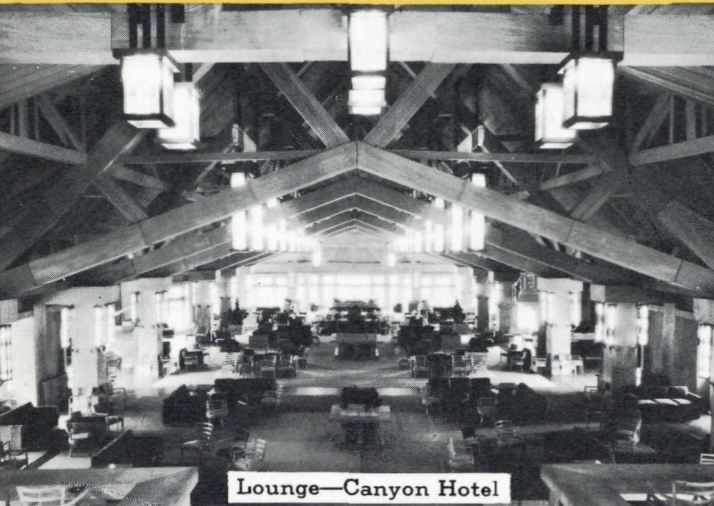
Barber and Beauty shops, cocktail rooms, buffets, long distance telephones and telegraph, laundry, tailor, cleaning service, recreation halls and music for dancing are provided for you. Reservations may be made on the European Plan at all hotels. At Old Faithful Inn and Canyon Hotel, arrangements may be made on arrival for accommodations on the American Plan, in which case meals are charged for from the time of registering to the time of checking out, whether eaten or not. During heavy travel, visitors traveling alone may occasionally be asked to share a room.

Deposits: Reservations are held without deposit until 4:00 P. M. of **FIRST DAY** of stated arrival. If you wish space held for later than 4:00 P. M., you may send deposit of first night's lodging. Minimum applicable rate per night for **LODGING** for party will be stated on confirmation of room reservations. Checks should be payable to **YELLOWSTONE PARK COMPANY** and should reach us **at least 2 weeks in advance of arrival date.** Deposits good only at locations named and are non-negotiable. No refunds can be made on prepaid reservations, unless space is released before noon of **first day** of stated arrival. Check-out hour 11:00 A. M.

Pets: Must be on leash. Not permitted in hotels, but arrangements may be made with head porter for their care.

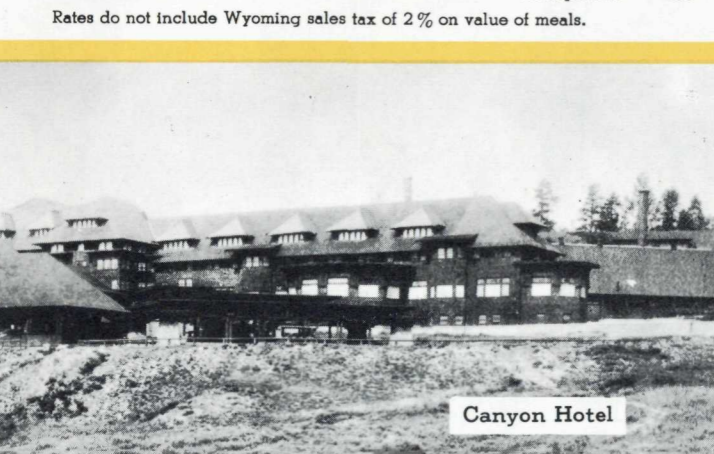
DAILY RATES AT HOTELS

ONE ROOM:	RATE PER DAY FOR PARTY	
	Without Bath	With Bath
1 person	\$11.85	\$14.35 & \$15.35
2 persons	20.70	23.70 & 24.70
3 persons	29.05	34.05 & 35.55
4 persons	37.40	
TWO ROOMS, bath between:		
2 persons	28.70 & 30.70	
3 persons	38.05 & 40.05	
4 persons	46.40 & 47.40	
*Children 3 years and under 8 when occupying room with adults		
	5.25	5.75



Lounge—Canyon Hotel

EUROPEAN PLAN (Rooms only): Mammoth, Old Faithful, Lake and Canyon Hotels:	RATE PER DAY FOR PARTY	
	Without Bath	With Bath
ONE ROOM:		
1 person	\$ 5.50	\$ 8.00 & \$ 9.00
2 persons	8.00	11.50 & 12.50
3 persons	10.00	16.05 & 17.55
4 persons	12.00	
TWO ROOMS, bath between:		
2 persons	16.00 & 18.00	
3 persons	19.50 & 21.50	
4 persons	22.00 & 24.00	
*Children 3 years and under 8 years when occupying room with adults		
	2.00	2.50
*CHILDREN UNDER 3 YEARS:		
Any service requested at hotels or hotel cottages will be charged for on basis of service rendered.		
Detached Bath		
	each person	.35



Canyon Hotel

Hotel Cottages

Cottages, with and without showers are operated in connection with Mammoth Springs Hotel and with Lake Hotel, but are not available at other Park locations. **No cooking is permitted.** Meals available in Mammoth Springs Main Dining Room or Coffee Bar; at the Lake location, in Lake Hotel Coffee Shop. Rates for cottage accommodations are as follows and **DO NOT INCLUDE MEALS.** Rates quoted for children under 8, apply when children occupy a room with adults. Full rates apply for children under 8 occupying separate rooms:

Mammoth Hotel Cottages:	Per Day
Furnished cottage room: DOUBLE BED, running hot and cold water:	For Party
1 person	\$ 3.75
2 persons	5.00
3 persons (with addition of cot)	6.50
Children, 3 years and under 8 years, each	1.00
Furnished cottage room: TWIN BEDS, running hot and cold water:	
1 person	4.50
2 persons	6.00
3 persons (with cot)	7.50
Children, 3 years and under 8 years, each	1.00
Furnished cottage room (or rooms), TWIN BEDS, SHOWER, LAVATORY AND TOILET:	
One room:	
1 person	7.50
2 persons	10.00
3 persons (with cot)	12.50
Children, 3 years and under 8 years, each	1.50
Two rooms, with shower bath between:	
2 persons	15.00
3 persons	17.50
4 persons	20.00
Children, 3 years and under 8 years, each	1.50

Lake Hotel, Cottages: (Size of rooms does not permit use of cots)	Per Day
Furnished cottages, 2 rooms, shower bath between rooms, each room furnished with 1 double and 1 single bed, toilet and lavatory.	
One room, without shower, but with toilet and lavatory:	
1 person	6.00
2 persons	8.00
3 persons	10.00
Children, 3 years and under 8 years, each	1.25
One room, with shower:	
1 person	7.50
2 persons	10.00
3 persons	12.50
Children, 3 years and under 8 years, each	1.50
Two rooms, shower bath between, toilet and lavatory in each room:	
2 persons	15.00
3 persons	17.50
4 persons	20.00
Children, 3 years and under 8 years, each	1.50

*MAMMOTH SPRINGS HOTEL, OLD FAITHFUL INN, CANYON HOTEL, CANYON VILLAGE MAIN DINING ROOMS—Breakfasts, Lunches and Dinners are served at popular prices. Selection of Entree indicates price of meal. Children's Plates available for luncheon and dinner.

Rates do not include Wyoming sales tax of 2% on value of meals.

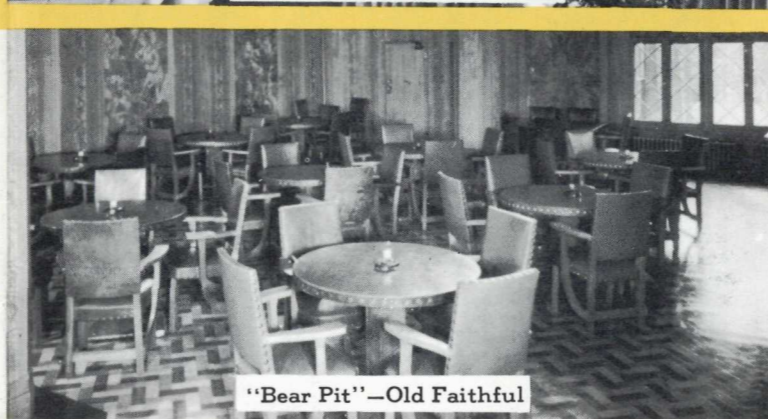
CHILDREN UNDER 3 YEARS: Any service requested at hotels or hotel cottages will be charged for on basis of service rendered.



Mammoth Springs Hotel



Dining Room, Canyon Hotel



"Bear Pit"—Old Faithful

Lodge Cabins

AT convenient and scenic locations in Yellowstone, there are Lodges. Main Lodges are huge rustic log and stone buildings, containing attractive dining rooms, lobbies, halls for entertainments and dancing, stores, soda fountains and rest rooms. Nearby are comfortable cabins for one, two, three or four guests. You can drive your car alongside your cabin, unpack and there you are. You take your meals in the Main Lodge, Dining Room or Coffee Shop, with college girls to wait on you. **No cooking permitted in Lodge Cabins.** Entertainment and dancing every night but Sunday at the Lodges.

Rates for accommodations at Lodges are **EUROPEAN PLAN:**

Old Faithful Lodge	Lake and Roosevelt Lodges
These cabins have hot and cold running water, inner-spring mattresses, electric lights, heating stoves and other comfortable furnishings. Rate includes maid and bellboy service.	These cabins do not have running water, but have inner-spring mattresses, electric lights, heating stoves and other comfortable furnishings. Rate includes maid and bellboy service.
Per Day, Per Cabin	Per Day, Per Cabin
1 person - - - - - \$3.50	1 person - - - - - \$2.25
2 persons - \$5.00 and \$5.25	2 persons - \$3.75 and \$4.00
3 persons - 6.50 and 6.75	3 persons - 5.25 and 5.50
4 persons - - - - - 7.75	4 persons - - - - - 6.50
Each additional person, \$1.00	Each additional person, \$1.00
Detached bath - - - - -	Detached bath - - - - - 35c per person

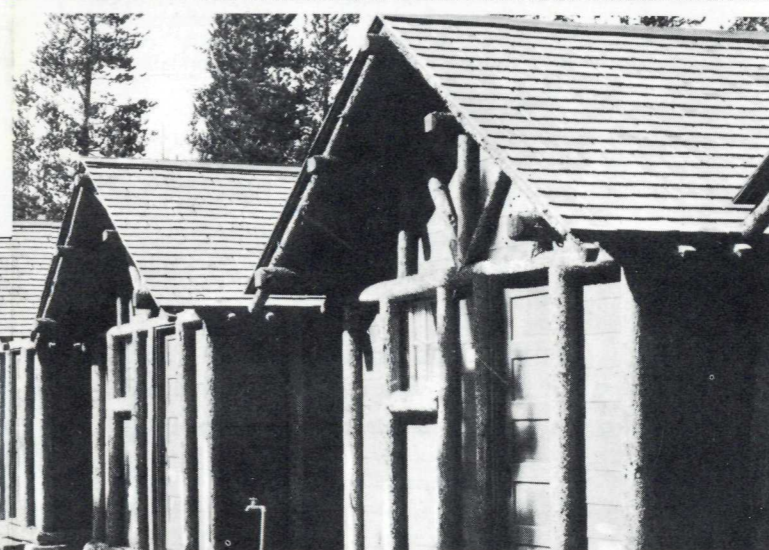
MEALS: Table d'hote service and coffee shops at Old Faithful, Lake and Roosevelt Lodges. Reasonable prices. Wyoming sales tax 2% on meals. Telephone, laundry service, soda fountains and curio stores at all lodges. Barber and Beauty Shops at Old Faithful Lodge; barber shop at Lake Lodge. **Deposits:** Reservations are held without deposit until 4:00 P. M. of **FIRST DAY** of stated arrival. If you wish space held for later than 4:00 P. M., you may send deposit of first night's lodging. Minimum applicable rate per night for **LODGING** for party will be stated on confirmation of room reservations. Checks should be payable to **YELLOWSTONE PARK COMPANY** and should reach us **at least 2 weeks in advance of arrival date.** Deposits good only at locations named and are non-negotiable. No refunds can be made on prepaid reservations, unless space is released before noon of **First Day** of stated arrival. (Check-out Hour 11:00 A. M.)

Canyon Village

LODGE, WITH ALL SERVICES AVAILABLE

500 modern motel units, with hot water, heat and showers: **no cooking.**

	Rate per Room
1 person in one room	\$10.00
2 persons in one room	12.00
3 persons in one room	15.00
4 persons in one room	17.00



Guest Lodges

Campers' Cabins

OLD FAITHFUL, THUMB, FISHING BRIDGE AND CANYON

Campers' Cabin groups have headquarters buildings, where you register and are assigned cabins. Each area has many log and frame cabins and attractive cafeterias, where wholesome food is served at moderate prices. **COOKING IS PERMITTED** in cabins and a limited amount of cooking utensils and bedding may be rented at the central office. Fuel may be purchased at each cabin camp office. No maid, bellboy, or linen service with these **PARTIALLY FURNISHED** cabins. No charge for padlock or key, but 50c deposit required. Check-out hour 11 a. m.

Cabins at Canyon and Thumb **do not** have running water, but water taps are centrally located on the outside. The cabins at Old Faithful and Fishing Bridge all have running cold water and sinks.

Equipment and rates for each type of cabin are as follows:

One-Room Cabins—One double bedstead, bedspring, mattress, mattress cover, stove, washstand, table, bench, mirror, slop jar, wash basin, pitcher, teakettle, per day:	Per Day, Per Cabin	
	Canyon, and Thumb	Old Faithful and Fishing Bridge
1 person	\$1.50	\$1.75
2 persons	1.75	2.00
Each additional person or cot...	.50	.50
One-Room Cabins—1 double bedstead, bedspring, mattress, single bedstead, bedspring, mattress, 2 mattress covers, stove, washstand, table, 2 benches, mirror, slop jar, wash basin, pitcher, teakettle, per day:		
2 persons	2.00	2.25
3 persons	2.25	2.50
Each additional person or cot...	.50	.50

One-Room Cabins—One Double Bed:	Per Day, Per Cabin	
	Canyon, and Thumb	Old Faithful and Fishing Bridge
1 person	\$2.25	\$3.25
2 persons	3.75	4.75
One-Room Cabins—1 Double and 1 Single Bed:		
3 persons	5.25	6.25
One-Room Cabins—Two Double Beds:		
4 persons	6.50	7.50
Each additional person	1.00	1.00

Deposits on Reservations

Reservations for visitors using their own cars are held without deposit until 4 p. m. of **FIRST DAY** of stated arrival. If you wish space held for later than 4 p. m., you may send deposit of first night's lodging. Minimum applicable rate per night for lodging for party will be stated on confirmation of room reservations. Check should be payable to **Yellowstone Park Company** and should reach us **at least 2 weeks in advance of arrival date.** Deposits good only at locations named and are non-negotiable. No refunds can be made on prepaid reservations unless space is released before noon of first day of stated arrival.