



PITCH A TENT OR
BRING YOUR OWN RV

FISHING BRIDGE RV PARK



Situated by Fishing Bridge near beautiful Yellowstone Lake, this RV Park features sites with full hook-ups. It's designed for hard-sided units only with a maximum length of 40'. The area also offers a coin laundry, pay showers, store, electricity, water, sewer hook-ups and a sanitary dump station. Sightseeing tours are also available.

MADISON CAMPGROUND



A central location, this site is just 14 miles east of the West Yellowstone entrance and 16 miles north of Old Faithful near the junction of the Gibbon, Madison and Firehole Rivers. Offers a sanitary dump station and limited group sites but no utility hookups or showers.

CANYON CAMPGROUND



You'll find this campground close to the breathtaking Grand Canyon of the Yellowstone near the center of the park. Offers stores, restaurants, pay showers, a coin laundry and a sanitary dump station, but no utility hookups.

BRIDGE BAY CAMPGROUND



Bridge Bay is situated near Yellowstone Lake, 30 miles from the East Entrance to Yellowstone. It's also conveniently adjacent to Bridge Bay Marina/ boat launch and store. A sanitary dump is available but no utility hookups. Pay showers and a coin laundry are also within four miles. Group sites available.

GRANT VILLAGE CAMPGROUND



This woody campground is located at the southwestern edge of Yellowstone Lake, 22 miles north of the South Entrance. Within a half mile, you'll find stores, restaurants, pay showers, a coin laundry and a sanitary dump station, but no utility hookups. Group sites available.

LEGEND



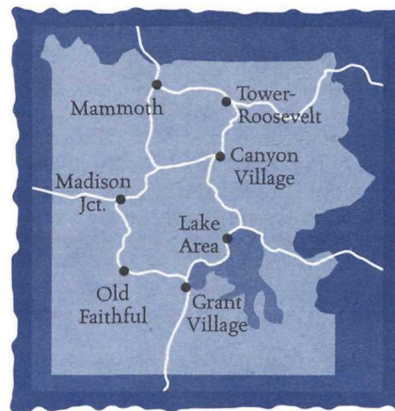
YELLOWSTONE
NATIONAL PARK LODGES

Operated By **AmFac** Parks & Resorts

RESERVATIONS

Reservations for lodging, campgrounds and activities should be made well in advance of your arrival. Due to high call volumes during May and June, it is best to call evenings or weekends.

AmFac Parks & Resorts
P.O. Box 165
Yellowstone National Park, WY 82190
1-307-344-7311
Fax 1-307-344-7456
www.travelyellowstone.com
www.amfac.com



MILEAGE

Cody, Wyoming	53 mi.
Jackson, Wyoming	56 mi.
Bozeman, Montana	80 mi.
Billings, Montana	129 mi.
Salt Lake City, Utah	390 mi.
Denver, Colorado	563 mi.

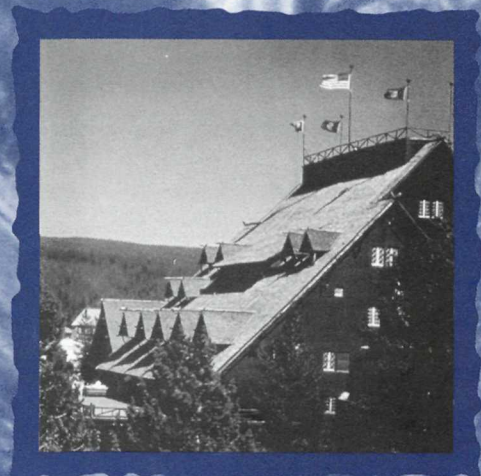
Mileage is to the nearest Park Entrance

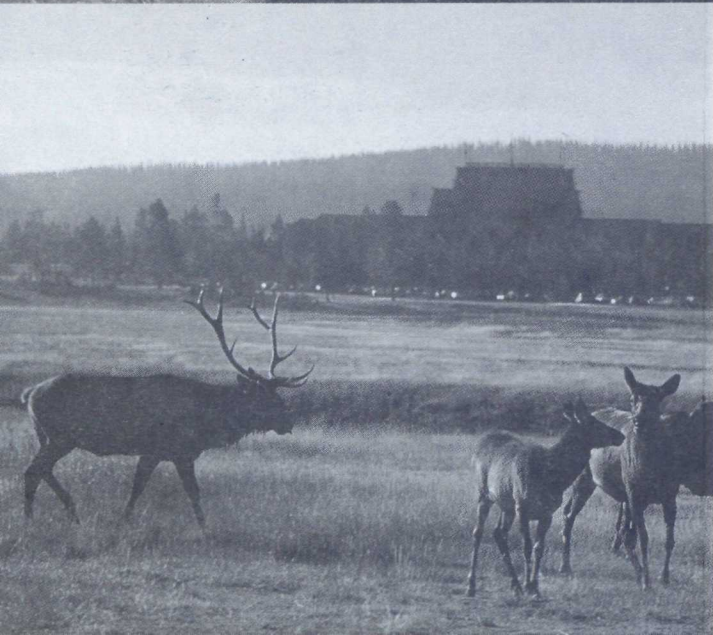
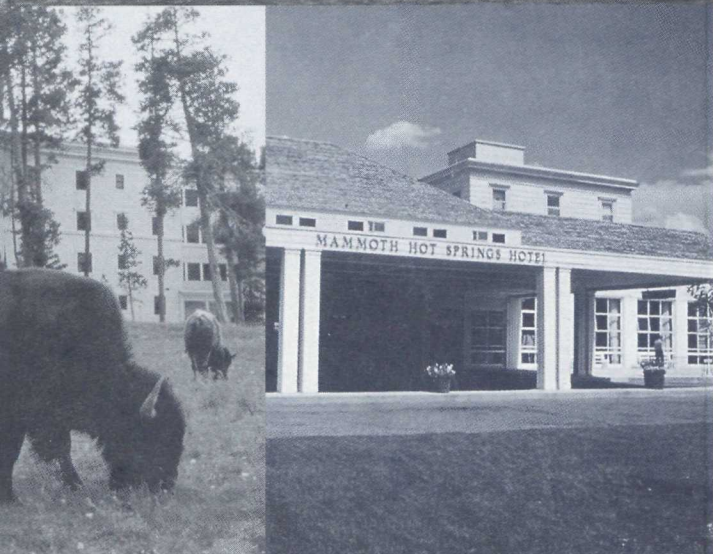
AmFac is an authorized concessioner of the National Park Service.



YELLOWSTONE
NATIONAL PARK LODGES

IN-PARK ACCOMMODATIONS





AWAKEN IN A HOTEL OR CABIN

MAMMOTH HOT SPRINGS HOTEL & CABINS



In the early days, Yellowstone's visitors began their park exploration at Mammoth Hot Springs. Today, Mammoth still offers a warm welcome as it sits alongside the impressive stone buildings which were once Fort Yellowstone. You'll see elk grazing around the Mammoth Terraces, the uniquely colorful and steamy limestone tiers for which the area is named. In winter, it's the only in-park location accessible by car and is a hub of snow-packed adventures - from skiing and skating to snowshoeing and snowcoach touring. It's like being on "Cloud Nine" in Nordic Heaven.

ROOSEVELT LODGE CABINS



From the front porch, you can rock your stress to sleep and awaken your old west spirit. The western hospitality is complemented by rustic cabin-style lodging and family-style dining. Saddle-up your adventure onboard a stagecoach, horse or covered wagon at the Roosevelt Corrals. Whatever you do, you'll feel like Teddy Roosevelt himself in your appreciation for this endearing area.

LAKE LODGE CABINS



From here time is captured in the shimmering reflections of lakeside mountains. And from here, children young and old recount enchanting stories of lumbering moose and fish too big to keep. Lake Lodge is an inviting location where cozy cabins and cafeteria-style dining create a family-friendly atmosphere. The log lodge houses a delightful lobby where two fireplaces routinely beckon guests from the huge porch.

CANYON LODGE & CABINS



If "location" is everything, this is a great central home base for your park explorations. It's located close to Yellowstone's namesake Grand Canyon and renowned Lower Falls. The Canyon area offers you a mix of cabin types and new lodge rooms, featuring western national park-themed decor.

LAKE YELLOWSTONE HOTEL & CABINS



Upon arrival, massive white columns guide you to an age of golden touring. A step through the glass doors transports you to a time of classic, yet casual, elegance. With the delicate

sounds of a string quartet, you'll melt into original period wicker furniture while the serenity of Yellowstone Lake illuminates through the Sun Room windows. Hotel rooms maintain the 1920's ambiance. Nearby annex rooms and comfortable cabins add to the range of accommodations.

GRANT VILLAGE



This village is named after president Ulysses S. Grant who established Yellowstone as the world's first national park in 1872. Here, you'll recapture the day's adventure in the sunset view from the lake-side dining room, then retire to your modern motel room. Nestled in the southeast quadrant of Yellowstone, this location provides convenient access to both Yellowstone and Grand Teton National Parks - on one dual-park entrance fee.

OLD FAITHFUL INN



It is only fitting that a national park as immense and impressive as Yellowstone offers hotels equal in size and grandeur. Old Faithful Inn is the largest log cabin in the world and features an 85-foot tall lobby, huge roughstone fireplace, overhanging balconies and railings made of spectacular twisted gnarled logs. Room types are a blend of history and renovation. The Inn stands as a man-made wonder, surrounded by the magic of the Old Faithful Geyser Basin.

OLD FAITHFUL LODGE CABINS



From the Old Faithful Lodge, you can sip cappuccino and espresso while witnessing the spectacle that is Old Faithful Geyser. You can look for unique treasures in the gift shop and marvel at the work in progress of western artists while nibbling on a decadent dessert. Economical cabins are scattered around the area yet are close to all that makes this area so special - like the dynamic wildlife and hydrothermal wonders.

OLD FAITHFUL SNOW LODGE & CABINS



Here the comfort and convenience of modern design merges with the art and craftsmanship of the great lodges of the early 1900s. The Snow Lodge features heavy timber construction, hand-wrought iron accents, a centerpiece stone fireplace and an open cathedral ceiling in the dining room. Specially designed furniture brings modern comfort and historic style to the rooms and public areas. In the winter, over-the-snow vehicles are the only way to get to this snowy haven. But, as they say "getting there is half the fun!"

